

APLU 2019

San Diego, California

In Service

NOVEMBER 10-12

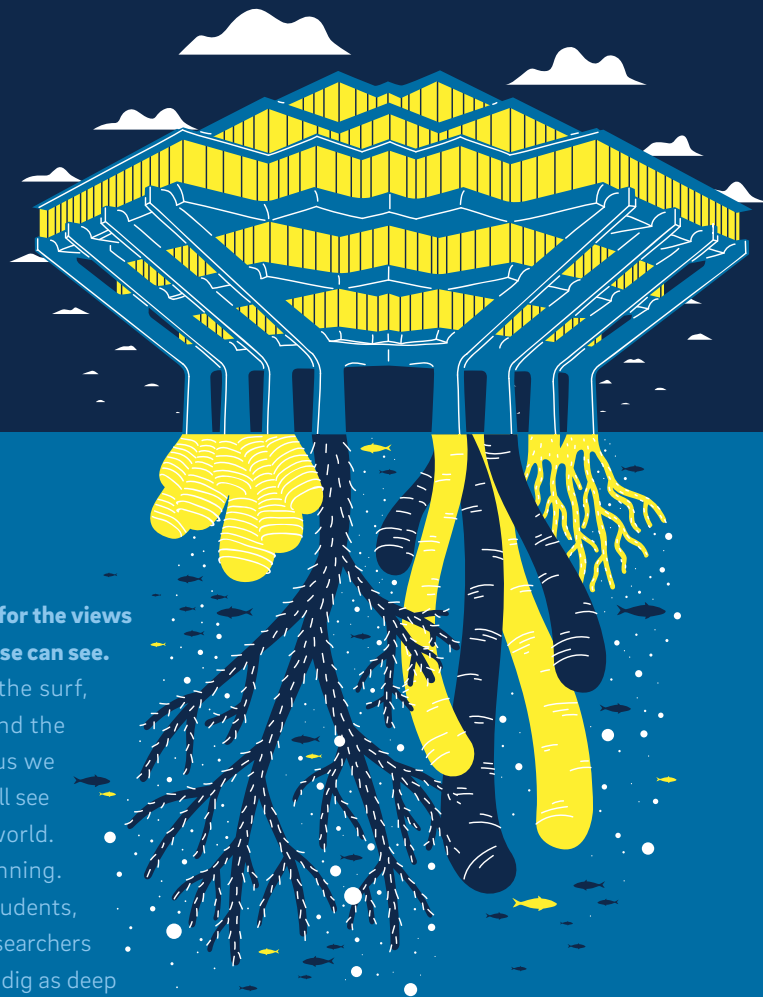
aplu.org



ANNUAL MEETING Conference Program

#APLU2019

LOOK DEEPER



**Come for the views
no one else can see.**

Peel back the surf,
the sand, and the
beautiful campus we
call home, and you'll see
a whole other world.
One equally stunning.
Because here, students,
faculty, and researchers
are free to dig as deep
as they like. Ask questions
nobody's asked. Unite disciplines
no one's ever united. And as a result, see things
no one's ever seen. This is UC San Diego.

The No. 1 public university in the nation.

Enjoy the view.

#1 public university in the
nation for contributions to
social mobility, research, and
public service.

Washington Monthly, 2019

#4 among public research
institutions in the U.S. for
"high-quality science."

Nature Index, 2019

#1 among the world's top
"Golden Age" universities—
the best 100 institutions
founded between 1945
and 1966.

Times Higher Education, 2018

UC San Diego

lookdeeper.ucsd.edu

CONTENTS

Welcome from APLU President Peter McPherson | 2

Welcome to the 2019 APLU Annual Meeting | 3

APLU Annual Meeting App | 6

2019 Annual Meeting Grid At-A-Glance | 7

**General Sessions, Institutional Strategy Sessions,
and Highlighted Sessions and Activities | 8**

General Sessions | 8

Institutional Strategy Sessions | 11

Other Highlighted Sessions/Activities | 12

Highlighted Awards Sessions | 13

Concurrent Sessions and Business Meetings | 18

COUNCILS

Council of 1890 Universities (1890s) | 18

Council of Presidents (CoP) | 20

Council of Presidents' & Chancellors' Spouses/Partners (CPCSP) | 22

Council on Academic Affairs (CAA) | 23

Council on Governmental Affairs (CGA) | 28

Council on Research (CoR) | 31

Council on Strategic Communications (CSC) | 35

Council on Student Affairs (CSA) | 37

COMMISSIONS

Coalition of Urban Serving Universities (USU) | 42

Commission on Access, Diversity, & Excellence (CADE) | 47

Commission on Economic & Community Engagement (CECE) | 52

Commission on Food, Environment, & Renewable Resources (CFERR) | 56

CFERR Board on Agriculture Assembly (BAA) | 58

CFERR Board on Human Sciences (BoHS) | 63

CFERR Board on Veterinary Medicine (BVM) | 65

Commission on Information, Measurement, & Analysis (CIMA) | 68

Commission on International Initiatives (CII) | 71

Commission on Science & Mathematics Teaching Imperative (SMTI) | 76

Personalized Learning Consortium | 77

Powered by Publics (PxP) | 79

Affiliates | 83

Meeting Policies | 84

About the Hilton San Diego Bayfront | 85

Meeting Room Locations | 86

Acknowledgments | 88

2019 Meeting Sponsors & Exhibitors | 89

2019 APLU Board of Directors | 91

APLU Offices and Staff | 93

Future Annual Meeting Dates | 95



WELCOME FROM APLU PRESIDENT PETER MCPHERSON

Public universities were founded with a simple yet radical aim: to democratize access to higher education and advance the public good through their work. Considered revolutionary at the time, that mission has helped drive untold progress in our world. Public universities provide ladders of upward mobility. They develop cures for debilitating diseases. And they create more vibrant communities. These are the rewards of our institutions' education, research, and engagement work.

And while their public purpose is timeless, we must constantly ask ourselves how public universities can apply it to meet the most urgent challenges of our time. How can our universities eliminate barriers facing the rapidly diversifying student population? How can they tackle the scourge of addiction through research and outreach? How can their work breathe new life into forlorn communities that many had long ago forgotten? And perhaps most important, how can

they achieve all this in a rapidly shifting landscape? This work is invigorating precisely because it is so challenging.

This year's Annual Meeting will explore how public universities can better serve our students, communities, and society. As we commemorate the 100th Veterans Day, we thank those who selflessly served in uniform and consider how we can better serve them. This year we also celebrate the 25th anniversary of the addition of tribal colleges and universities that were first recognized as land-grant institutions in 1994. A quarter-century after becoming land-grant universities, their positive impact is more evident than ever in the lives of students and communities.

I welcome the public university leaders joining us here in San Diego to tackle the challenges and opportunities we face and magnify their institutions' collective impact on our students, communities, society.



Peter McPherson
APLU President



WELCOME TO THE 2019 APLU ANNUAL MEETING

WELCOME to APLU's 132nd Annual Meeting! The APLU Annual Meeting is the premier gathering of senior leaders from public research universities, land-grant institutions, and state university systems. No other meeting in higher education brings together such a diverse array of public university presidents, chancellors, and other senior leaders.

The theme of this year's APLU Annual Meeting is *In Service*. Our meeting this year takes place during the 100th Anniversary of Veteran's Day, and our Sunday night speaker, Gen. Richard Myers will help set the stage addressing all the ways public universities serve their communities, nation, and the world. Public universities have a storied connection with the military, dating back to the original Morrill Act and continuing through the GI Bill, ROTC programs, and more. But our service goes far beyond that connection. From serving students who then become much more civically engaged in their lifetimes to undertaking public impact research that improves the lives of people across the world to engaging with communities to support economic development.

This year's sessions have been developed to give attendees practical strategies they can use on their own campuses. As always, ample time for networking with colleagues from the United States, Canada, and Mexico has been built into the schedule as well.

APLU Councils and Commissions

As the leading research and advocacy organization for senior public university leaders, APLU engages its membership through a variety of initiatives led by its councils and commissions. These councils and commissions help drive the APLU agenda. For the purposes of the Annual Meeting, these councils and commissions organize programming tracks that allow members to quickly identify sessions of interest. Meeting participants are free to follow these predetermined tracks or branch out and attend any other open session of interest. Certain APLU initiatives also have created tracks for those members engaged with these important projects.

The APLU council structure enables university leaders working in similar positions to come together to address critical issues and expand their knowledgebase within their professional area of expertise. The APLU councils are:

- Council of 1890 Universities (1890s)
- Council of Presidents (CoP)
- Council of Presidents' & Chancellors' Spouses/Partners (CPCSP)
- Council on Academic Affairs (CAA)
- Council on Governmental Affairs (CGA)

- Council on Research (CoR)
- Council on Strategic Communications (CSC)
- Council on Student Affairs (CSA)

APLU's commission structure enables individuals from multiple disciplines across the university to come together to address critical issues and expand their knowledgebase in areas of common interest, regardless of position. The APLU commissions are:

- Coalition of Urban Serving Universities (USU)
- Commission on Access, Diversity, & Excellence (CADE)
- Commission on Economic & Community Engagement (CECE)
- Commission on Food, Environment, & Renewable Resources (CFERR)
- Commission on Information, Measurement, & Analysis (CIMA)
- Commission on International Initiatives (CII)
- Commission on Science & Mathematics Teaching Imperative (SMTI)

In addition, a series of sessions sponsored by the Personalized Learning Consortium (PLC) and Powered by Publics (PxP) initiatives will take place throughout the meeting, as will sessions created by other groups and in the Affiliates track.

What to Attend

The APLU Annual Meeting includes more than 125 general and concurrent sessions, as well as business meetings. Attendees are free to attend any sessions, unless otherwise noted in the program. Attendees do not have to be part of a specific council or commission to attend an open session, however, business and executive committee meetings are limited to those attendees that serve on these councils, commissions, boards, committees, etc. The Council of Presidents' sessions Monday morning are limited to only presidents and chancellors of member institutions.

All attendees are encouraged to attend the General Sessions, including Sunday evening's Keynote Session, Monday's Luncheon, and the closing sessions on Tuesday morning; and the Institutional Strategies sessions that focus on specific approaches and lessons learned from the finalists of APLU's four institutional awards. (See pages 8–17 for more details.)

All attendees also are invited to the daily breakfasts as well as morning and afternoon breaks, which provide attendees time to network with colleagues.

Business meetings and select meal events are exclusively for members of specific councils and commissions and/or their executive committees—this is noted in the program.

An orientation session for those unfamiliar with APLU or the Annual Meeting will be held at 9:50 a.m. Sunday in Aqua Salon F.

The Exhibit Hall, located in the Indigo West Foyer, will host the coffee and networking breaks Sunday and Monday.



ASPIRE

THE NATIONAL ALLIANCE FOR
INCLUSIVE & DIVERSE STEM FACULTY

Learn more at

AspireAlliance.org



ASSOCIATION OF
PUBLIC &
LAND-GRANT
UNIVERSITIES

NSF INCLUDES Aspire Alliance Goals

1. Deepen faculty skills in inclusive teaching practices
2. Increase representation of URG in the STEM professoriate
3. Foster institutional cultures that value inclusion and diversity in STEM

This material is based upon work supported by the National Science Foundation under Grant No. (1834518, 1834522, 1834510, 1834513, 1834526, 1834521). Any opinions, findings, and conclusions or recommendations expressed in this material are those of the authors and do not necessarily reflect the views of the National Science Foundation.



Navigating the Annual Meeting

Annual Meeting App

Get the complete Annual Meeting schedule and more in the palm of your hand by downloading APLU's mobile app. Follow the Annual Meeting; share contact information with other attendees; create personal schedules; connect with other attendees via social media; vote in session polls; view speaker information; see hotel maps; learn about Annual Meeting sponsors and exhibitors; network with meeting participants; and more. To access the APLU Annual Meeting download the APLU Annual Meeting app in the App or Google Play stores. For more information on the app, see page 6.

Printed Program

This traditional guide to the meeting, which you are reading now, is organized by Council and Commission, and contains details on all sessions, including a brief summary and speaker names. It also contains venue maps and information on sponsors.

Pocket Guide

The pocket guide is a quick and handy reference for the entire meeting schedule, which includes a listing of all meeting sessions by council or commission as well as session times and locations.

Social Media



TWITTER

Follow the Annual Meeting at #APLU2019
Follow APLU at @APLU_News



FACEBOOK

www.facebook.com/APLUNews



YOUTUBE

www.youtube.com/APLUNews



LINKEDIN

<https://www.linkedin.com/company/association-of-public-and-land-grant-universities-aplu->

UNIVERSITY OF CENTRAL FLORIDA



CHARGE ON



INSPIRES US TO MAKE THE GREATEST IMPACT.

AT UCF, we recognize the life-changing impact of higher education and believe it should be achievable for everyone. It's why we've championed efforts to close the graduation gap for our Hispanic and African American students. And we've succeeded — surpassing national averages while at the same time becoming a top producer of degrees for underrepresented populations. Because as Knights, we are driven to do more and be more. To make the world a better place.

AND TO ALWAYS CHARGE ON.

For stories of student success, visit
ucf.edu/chargeon.



UCF is one of the top 20 most innovative universities in the nation according to *U.S. News & World Report*.

APLU ANNUAL MEETING APP

APLU has again partnered with CrowdCompass on the Annual Meeting App—native for both Apple and Android. Search for APLU Annual Meeting in the App or Play stores.

The Annual Meeting App has the following features:

SCHEDULE: See the full event schedule with activity times, room numbers, speaker details, and descriptions. Click “Add to Schedule” to include the event on your personalized schedule. You can also filter the sessions by Council/Commission and issues tags to see the tracks for the Annual Meeting.

MAPS: Navigate the event through the floor plans and learn more about San Diego and the Hilton Bayfront.

EXHIBITORS & SPONSORS: Discover the organizations that support the APLU Annual Meeting. Click the organization’s name to see a description and contact details.

POLLS: Be part of driving specific sessions and interact with speakers and attendees.

ATTENDEES: Connect with your fellow attendees by exchanging your digital business cards. Any new contacts made will be housed within the My Contacts section of the app.

SPEAKERS: Learn more about the presenters at this year’s event. You can tap a speaker’s name to see his or her bio, organization, title, and any sessions at which he or she will be featured.

SEARCH: Quickly locate any specific sessions, sponsors, descriptions, or speakers. Tap on the open text box at the top of the page to enter a keyword of what you are looking for. Select the detail description to learn more about a particular section.

SOCIAL MEDIA: Follow the conversation! Click on the social media icons to stay connected. (#APLU2019)

ABOUT: Learn more about APLU and the annual meeting.

HOTEL & TRANSPORTATION: Find all of the information you need about the San Diego Hilton Bayfront and the best way to get around the city.



2019 ANNUAL MEETING GRID AT-A-GLANCE

SUNDAY NOVEMBER 10		
7:00–8:15 a.m.	Breakfast	
8:15–9:45 a.m.	Concurrent Sessions	
9:45–10:30 a.m.	Networking Break	Annual Meeting Orientation
10:30–11:45 a.m.	Concurrent Sessions	
Noon–1:15 p.m.	Executive Committee Luncheons	
1:30–2:30 p.m.	Concurrent Sessions	
2:30–3:15 p.m.	Networking Break	
3:15–4:15 p.m.	Awards Sessions/ Institutional Strategies	
4:30–6:00 p.m.	Keynote Session	
6:00–7:30 p.m.	Welcome Reception	

MONDAY NOVEMBER 11	
7:00–8:15 a.m.	Breakfast
8:15–9:45 a.m.	Concurrent Sessions
9:45–10:30 a.m.	Networking Break
10:30–11:45 a.m.	Concurrent Sessions
Noon–1:15 p.m.	Presidents Luncheon
1:30–2:45 p.m.	Concurrent Sessions
2:45–3:30 p.m.	Networking Break
3:30–4:45 p.m.	Concurrent Sessions
Evening	Concurrent Sessions/ Networking/Dinners/ Receptions/etc.

TUESDAY NOVEMBER 12	
7:00–8:15 a.m.	Breakfast
8:30–10:45 a.m.	Closing Sessions

GENERAL SESSIONS, INSTITUTIONAL STRATEGY SESSIONS, AND HIGHLIGHTED SESSIONS AND ACTIVITIES

Annual Meeting participants are invited to attend these special sessions designed to give public higher education professionals insight and strategies on broad, cross-cutting issues administrators are dealing with on their campuses.

The Annual Meeting features several General Sessions open to all participants: The Keynote Session and Welcome Reception on Sunday evening, the Monday Luncheon, and the closing sessions Tuesday morning.

Sunday's Institutional Strategies sessions are designed to give meeting attendees specific strategies for success from the finalists and winners of APLU's four institutional awards. These include sessions on student success and degree completion, community engagement, innovation and economic prosperity, and internationalization.

General Sessions

SUNDAY, NOVEMBER 10

4:30–6:00 p.m. ■ Indigo BCDFGH

KEYNOTE SESSION

■ In Service

The theme of the 2019 APLU Annual Meeting is *In Service*. The keynote session will examine how public universities can better serve their students, communities, and country at a time when their work is more essential than ever. Universities, and their leadership, serve in many ways, providing access and increasing degree completion, undertaking public-impact research, driving economic development, working with communities across the globe to solve challenges, instilling the values of civic engagement in our students and faculty, and much more.

On the eve of the 100th anniversary of Veteran's Day, Richard Myers, president of Kansas State University and retired four-star general in the United States Air Force who served as the 15th Chairman of the Joint Chiefs of Staff, will deliver Sunday's Keynote Address.

Following his address, a panel of university leaders will explore the important role of public universities in providing a place for free and open discussion in a time of polarization. The panel will also discuss how service applies to the mission of modern public universities.

The session will also include the announcement of the winners of APLU's four institutional awards, which are the:

- Degree Completion Award;
- C. Peter Magrath Community Engagement Award;
- Institutional Award for Global Learning, Research, and Engagement; and
- Innovation and Economic Prosperity Universities Connections Award.

WELCOMING REMARKS: **Adela De La Torre**, *President, San Diego State University*

Peter McPherson, *President, APLU*

AWARDS SESSION: **Michael Drake**, *President, The Ohio State University and Chair, APLU Board of Directors*

KEYNOTE SPEAKER: **Richard Myers**, *President, Kansas State University and Former Chair, Joint Chiefs of Staff*

MODERATOR/PANELIST: **Gary May**, *Chancellor, University of California, Davis*

PANELISTS: **Heidi Anderson**, *President, University of Maryland Eastern Shore*
Nancy Cantor, *President, Rutgers University-Newark*
Tim White, *Chancellor, California State University System*
Wendy Wintersteen, *President, Iowa State University*



DE LA TORRE



MCPHERSON



DRAKE



MYERS



MAY



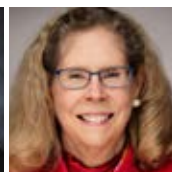
ANDERSON



CANTOR



WHITE



WINTERSTEEN

6:00–7:30 p.m. ■ Indigo AE & Indigo Terrace

■ Welcome Reception

All attendees are invited to attend the welcome reception—an excellent chance to network with colleagues from across APLU's membership and enjoy the San Diego weather from the Indigo Terrace.

MONDAY, NOVEMBER 11

Noon–1:15 p.m. ■ Indigo Ballroom

MONDAY LUNCHEON

■ Understanding Student Debt

All meeting attendees are invited to the Monday Luncheon to network with colleagues and hear from an expert on college costs and student debt: Sandy Baum, nonresident senior fellow for the Center on Education Data and Policy at the Urban Institute and professor emerita of economics at Skidmore College. While \$1.6 trillion of student debt is a daunting number that figure is only part of the story. As student debt continues to grow and cover the headlines, a deeper understanding of these figures and the issues behind them is critical. Baum will provide a deep dive into the issue of student debt and how universities can better serve the students that are working to pay it off.

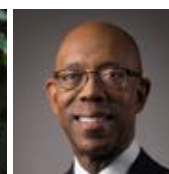
Following the luncheon, APLU Board Chair Michael Drake will officially pass the gavel to Robert Jones, President of the University of Illinois at Urbana-Champaign.

SPEAKER: **Sandy Baum**, *Nonresident Senior Fellow, Center on Education Data and Policy, Urban Institute and Professor Emerita of Economics, Skidmore College*

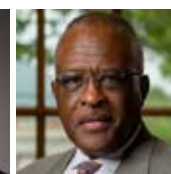
BOARD OF DIRECTORS: **Michael Drake**, *President, The Ohio State University*
Robert Jones, *President, University of Illinois at Urbana-Champaign*



BAUM



DRAKE



JONES

TUESDAY, NOVEMBER 12

CLOSING SESSIONS

8:30–9:15 a.m. ■ Indigo CDGH

■ The Empowered University

Freeman A. Hrabowski III, president of the University of Maryland, Baltimore County, has led a transformation of UMBC from a young, regional institution to one of the nation's most innovative research universities. He will discuss *The Empowered University*, his new book with coauthors Philip J. Rous and Peter H. Henderson, which probes the way senior leaders, administrators, staff, faculty, and students facilitate academic success by cultivating an empowering institutional culture and broad leadership for innovation. Hrabowski argues that higher education can play a critical role in addressing the fundamental divisions in our society and economy by supporting individuals in reaching their full potential. He examines how shared leadership enables an empowered campus to tackle tough issues by taking a hard look in the mirror, understanding strengths and weaknesses, assessing opportunities and challenges, and engaging in deep, sometimes difficult, conversations that lead to new approaches and innovative programs. He and his co-authors dig deeply into tough issues in higher education ranging from course redesign to group-based and experiential learning, entrepreneurship and civic engagement, academic inclusion, and faculty diversity.



HRABOWSKI

SPEAKER: **Freeman Hrabowski**, *President, University of Maryland, Baltimore County*



10:45–11:15 a.m. ■ Indigo West Foyer

BOOK SIGNING

■ *The Empowered University*

Freeman A. Hrabowski III with Philip J. Rous and Peter H. Henderson

9:15–9:45 a.m. ■ Indigo CDGH

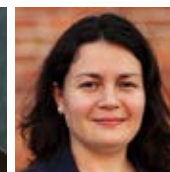
■ Higher Education & Immigration Policy

On the day that the U.S. Supreme Court is set to hear arguments on the Deferred Action for Childhood Arrivals (DACA) program, join a discussion about immigration and higher education. Universities have overwhelmingly supported continuing the protections provided to those in the DACA program, while urging Congress to pass immigration reform legislation that recognizes the important economic, cultural, and societal contributions of immigrants.

SPEAKER: **Pradeep Khosla**, *Chancellor, University of California, San Diego*
PANELIST: **Sonya Sanchez**, *Senior Counsel, Office of the General Counsel, University of California*



KHOSLA



SANCHEZ

9:45–10:45 a.m. ■ Indigo CDGH

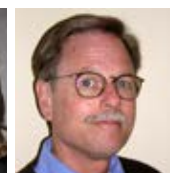
■ The 2020 Election: Where Does It Stand?

With the 2020 election less than a year away, join us for a discussion of the latest in U.S. politics and the potential impact on higher education. What can we expect from the presidential primary? Who will win control of the House and Senate? What are the implications of impeachment proceedings?

MODERATOR: **Sophia Magill**, *Director of Federal Relations, Iowa State University*
PANELIST: **Gary Jacobson**, *Distinguished Professor of Political Science Emeritus, University of California, San Diego*



MAGILL



JACOBSON

Institutional Strategy Sessions

APLU's institutional strategies sessions are designed to let participants learn from specific strategies for success that the finalists and winners of APLU's four institutional awards have used on their campuses. These include sessions on innovation and economic prosperity, community engagement, internationalization, and student success and degree completion.

3:15–4:15 p.m. ■ Sapphire A

■ Institutional Strategies Session for Innovation and Economic Prosperity (IEP)

APLU's Innovation and Economic Prosperity (IEP) Universities designation program helps higher education institutions better know, measure, and tell their economic development impact while recognizing institutions that are taking their commitment to economic development seriously. The IEP process emphasizes holistic economic engagement across talent and workforce development; innovation and entrepreneurship; and placemaking via community engagement, Cooperative Extension, and service. Learn more at www.APLU.org/IEP.

2019 IEP DESIGNEES: ■ University of Mississippi
■ University of Colorado Boulder
■ Western Washington University

MODERATOR: **Patrick Gallagher**, *Chancellor, University of Pittsburgh*

SPEAKERS:

- CONNECTIONS** **Leslie Boney**, *Vice Provost, Outreach and Engagement, North Carolina State University*
- TALENT** **Ahmad Ezzeddine**, *Associate Vice President for Educational Outreach and International Programs, Senior Associate to the President for Special Initiatives, Wayne State University*
- INNOVATION** **Paula Sorrell**, *Director of the Economic Growth Institute, University of Michigan*
- PLACE** **Greg Deason**, *Senior Vice President and Director of Commercialization and Place Making, Purdue University*

3:15–4:15 p.m. ■ Aqua Salon F

■ Institutional Strategies Session for Community Engagement

Learn strategies and tactics about successful university and community engagement practices from the regional winners of the 2019 W.K. Kellogg Foundation Community Engagement Scholarship Award: Colorado State University, Cornell University, Purdue University, and University of Louisville. These regional winners are finalists for the C. Peter Magrath Award, which is announced during the keynote session. Each institution will share successful strategies that have enabled their universities to excel in collaboration between the institution and their larger communities for the exchange of knowledge and resources.

PANELISTS: **Steve Abel**, *Associate Provost of Engagement, Purdue University*
Jen Krafchick, *Director, Campus Connections, Colorado State University*
Katherine McComas, *Vice Provost for Engagement and Land-Grant Affairs, Cornell University*

3:15–4:15 p.m. ■ Sapphire GH

■ Institutional Strategies to Increase Degree Completion

Student success and degree completion are one of the most pressing concerns for institutions of higher education in America; however, ever-changing student needs coupled with evolving workforce demands require institutions to become expert innovators to meet these complex needs. APLU established the Degree Completion Award to identify and honor public universities that are using innovative strategies and initiatives to increase retention and graduation outcomes and/or close achievement gaps for all students.

This session includes presentations of the innovative practices from the 2019 Degree Completion Finalists: University of Central Florida, University of North Carolina at Charlotte, and University of Rhode Island. Finalist presentations will focus on lessons learned from the creation and implementation of these solutions and practical recommendations for senior institutional leaders wishing to adapt the finalists' initiatives.

3:15–4:15 p.m. ■ Aqua Salon C

■ Institutional Strategies for Global Learning, Research, and Engagement

The world's most complex challenges are global in nature, requiring international cooperation and collaboration to develop solutions. These challenges have created a world in which interdisciplinary, cross-cultural, and cross-national learning, research, and engagement are basic requirements for excellence. Institutions able to prepare students-of-the-world and support global research and engagement will be the successful colleges and universities of this century. The APLU Institutional Award for Global Learning, Research, and Engagement recognizes public research universities and their leaders who excel in their efforts to drive an inclusive approach to their global engagement, research, and learning, and measure the impact of these efforts. In this session, the winners from this year's competition will present the lessons they have learned and effective practices they have discovered through their efforts to drive an inclusive approach to comprehensive internationalization.

PANELISTS:

Hilary Landorf, *Executive Director, Office of Global Learning Initiatives, Florida International University*

Murali Chandrashekar, *Vice Provost, International, University of British Columbia*

Eric Barron, *President, The Pennsylvania State University*

Roger Brindley, *Vice President, USF World, University of South Florida*

Kiki Caruson, *Assistant Vice President for Research, Innovation, and Global Affairs, University of South Florida*

Other Highlighted Sessions/ Activities

Orientation Session

Is it your first time at the Annual Meeting? Want to learn more about APLU? APLU will host an orientation session to help you navigate the Annual Meeting and learn more about APLU. Learn what to attend, how the meeting is structured, and how to become more involved with the association. The session will be held Sunday, November 11 at 9:50 a.m. in Aqua Salon F.

Breakfasts

Start your day off right with the Annual Meeting's complimentary breakfasts (7:00–8:15 a.m.) Sunday and Monday in Indigo A&E and Tuesday in Indigo CDGH.

Lunches

On Sunday, lunch is on your own, unless you are part of an executive committee or other special council/commission function. Monday's Luncheon is open to all attendees.

Networking Breaks

Most morning and afternoon breaks have been extended to provide more time for professional networking. Coffee and refreshments will be served in the Indigo West Foyer.

Welcome Reception

All Annual Meeting participants are cordially invited to enjoy the delicious hors d'oeuvres and refreshments at APLU's Welcome Reception from 6:00 to 7:30 p.m., on Sunday, in Indigo A&E and on the Indigo Terrace. The reception is a great opportunity for participants to meet with their colleagues from public universities.

Exhibit Hall

APLU's Exhibit Hall will run Sunday from 8:15 a.m.–5:00 p.m. and Monday from 8:15 a.m.–5:00 p.m. in the Indigo West Foyer.

Highlighted Awards Sessions

SUNDAY, NOVEMBER 10

8:15–9:45 a.m. ■ Aqua Salon DE

■ A Community of Scholars Celebrating Excellence

The U.S. Department of Agriculture's National Institute of Food and Agriculture and the APLU Board on Agriculture Assembly will present the following awards and recognition:

- Food and Agricultural Sciences Excellence in College and University Teaching Awards,
- Cooperative Extension Awards of Excellence and Diversity Award,
- Experiment Station Section Award for Excellence in Multistate Research, and
- Food Systems Leadership Institute

MODERATOR: **Orlando McMeans**, Chancellor-Dean, Southern University Agricultural Research and Extension Center and College of Agricultural, Family, and Consumer Sciences, Southern University

SPEAKER: **Scott Hutchins**, Deputy Under Secretary for Research, Education, and Economics, U.S. Department of Agriculture

PRESENTATION OF THE EXCELLENCE IN COLLEGE AND UNIVERSITY TEACHING AWARDS IN FOOD AND AGRICULTURAL SCIENCES

PRESENTER: **J. Scott Angle**, Director, National Institute of Food and Agriculture, U. S. Department of Agriculture

NATIONAL TEACHING AWARD RECIPIENTS

AWARDEES: **Dennis R. Decoteau**, Professor of Horticulture and Plant Ecosystem Health, The Pennsylvania State University

Michelle S. Schroeder-Moreno, Professor, Agroecology, and Sustainable Food Systems, North Carolina State University

REGIONAL TEACHING AWARD RECIPIENTS

AWARDEES: **Marcy M. Beverly**, Professor, Animal Science, Department of Agricultural Sciences and Engineering Technology, Sam Houston State University

Antonio DiTommaso, Professor, Weed Science, Cornell University

Lurline E. Marsh, Professor, Agriculture, Food and Resource Sciences, University of Maryland Eastern Shore

Cody L. Wright, Professor, Animal Science, South Dakota State University

Kevin L. Schalinske, Professor, Food Science and Human Nutrition, Iowa State University

EARLY CAREER TEACHER AWARD WINNERS

AWARDEES: **Abigail Borron**, Associate Professor, Agricultural Leadership, Education & Communication, University of Georgia

Andrea Lucky, Assistant Professor, Insect Systematics, University of Florida

TEACHING AND STUDENT ENGAGEMENT (TSE) AWARD WINNERS

AWARDEES: **Elizabeth L. Karcher**, Assistant Professor of Animal Sciences, College of Agriculture, Purdue University

John D. Tummons, Assistant Teaching Professor, Director of Undergraduate Studies, Agricultural Education and Leadership, University of Missouri

PRESENTATION OF THE EXCELLENCE IN EXTENSION AWARDS AND THE NATIONAL DIVERSITY AWARD

PRESENTERS: **J. Scott Angle**, Director, National Institute of Food and Agriculture, U. S. Department of Agriculture

Edwin J. Jones, Associate Dean, College of Agriculture and Life Sciences, Director, Virginia Cooperative Extension, Virginia Polytechnic Institute and State University

NATIONAL DIVERSITY IN EXTENSION AWARD

AWARDEE: **Juntos and Abriendo Caminos Work Teams**, Iowa State University

NATIONAL EXCELLENCE IN EXTENSION AWARD

AWARDEE: **Matthew John Devereaux**, Professor and Human Development Extension Specialist, University of Tennessee

REGIONAL EXCELLENCE IN EXTENSION AWARDS

1890 REGION

AWARDEE: **Dorothy P. Brandon**, *Professor Specialist, Family & Child Development, Consumer & Personal Finance, Alabama A&M University*

NORTHEAST REGION

AWARDEE: **Gordon C. Johnson**, *Assistant Professor and Extension Specialist, Fruits and Vegetables, University of Delaware*

NORTH CENTRAL REGION

AWARDEE: **Dianne E. Shoemaker**, *Extension Field Specialist, Dairy Production Economics and Associate Professor, The Ohio State University*

SOUTHERN REGION

AWARDEE: **Mark R. Peterson**, *Professor, Community and Economic Development, University of Arkansas*

WESTERN REGION

AWARDEE: **David G. Schramm**, *Family Life Extension State Specialist, Human Development and Family Studies, Utah State University*

PRESENTATION OF THE EXPERIMENT STATION SECTION AWARDS FOR EXCELLENCE IN MULTISTATE RESEARCH

PRESENTERS: **J. Scott Angle**, *Director, National Institute of Food and Agriculture, U. S. Department of Agriculture*
George Hopper, *Dean, College of Agriculture and Life Sciences, Director, Mississippi Agriculture and Forestry Experiment Station, Mississippi State University*

NATIONAL AWARD FOR EXCELLENCE IN MULTISTATE RESEARCH

SOUTHERN REGION

AWARDEE: **Enhancing Microbial Food Safety by Risk Analysis (S-1056)**

TECHNICAL COMMITTEE CHAIR: **Kristen Gibson**, *Associate Professor, Department of Food Science, University of Arkansas*

ADMINISTRATIVE ADVISOR: **Steven Lommel**, *Associate Dean for Research, Department and Plant Pathology, College of Agriculture and Life Sciences, North Carolina State University*

PARTICIPATING INSTITUTIONS: Auburn University, Clemson University, Colorado State University, Cornell University – Geneva and Ithaca, Idaho Cooperative Extension, Iowa State University, Kansas State University, Louisiana State University, LSU Ag Center, Michigan State University, Mississippi State University, New Mexico State University, New Mexico State University – Cooperative Extension, North Carolina State University, North Dakota State University, Oregon State University, Purdue University, Rutgers, The State University of New Jersey, The Ohio State University, The Pennsylvania State University, Texas A&M University, Texas A&M University – AgriLife Research, University of Arkansas, University of Arkansas – Pine Bluff, University of California – Cooperative Extension, University of California – Davis, University of Connecticut – Storrs, University of Delaware, University of Florida, The University of Georgia, University of Idaho – Cooperative Extension, University of Illinois at Urbana-Champaign, University of Kentucky, University of Maine, University of Maine – Cooperative Extension, University of Maryland, University of Massachusetts, University of Minnesota, University of Missouri, University of Nebraska, University of Puerto Rico, University of Rhode Island, University of Tennessee, University of Wisconsin-Madison, University of Wyoming, Virginia Polytechnic Institute and State University, Washington State University, Wayne State University

REGIONAL AWARDS FOR EXCELLENCE IN MULTISTATE RESEARCH

NORTHEAST REGION

AWARDEE: **Poultry Production Systems and Well-being: Sustainability for Tomorrow (NE-1442)**

TECHNICAL COMMITTEE CHAIR: **Ken W. Koelkebeck**, *Professor, Department of Animal Science, University of Illinois at Urbana-Champaign*

ADMINISTRATIVE ADVISOR: **Kumar Venkitanarayanan**, *Associate Dean for Research and Graduate Education & Associate Director, Storrs Agricultural Experiment Station, College of Agriculture, Health and Natural Resources, University of Connecticut*

PARTICIPATING INSTITUTIONS: Auburn University, Alabama A&M University, Delaware State University, Iowa State University, Michigan State University, Mississippi State University, Neiker Technalia, Spain, North Carolina State University, The Pennsylvania State University, Purdue University, University of Arkansas, University of Bern, Switzerland, University of California – Davis, University of Connecticut – Storrs, University of Delaware, The University of Georgia, University of Guelph, Canada, University of Hawaii, University of Illinois at Urbana-Champaign, University of Kentucky, University of Maryland, University of Minnesota, University of Nebraska, University of Wisconsin-Madison, USDA ARS (Georgia, Indiana, Mississippi), Virginia Polytechnic Institute and State University

WESTERN REGION

AWARDEE: Beneficial and Adverse Effects of Natural, Bioactive Dietary Chemicals on Human Health and Food Safety (W-4122)

TECHNICAL COMMITTEE CHAIR: Adam Chicco, Associate Professor, Department of Biomedical Sciences, Colorado State University

ADMINISTRATIVE ADVISOR: Chris A. Pritsos, Associate Dean of Research/Director, Nevada Agricultural Experiment Station, University of Nevada, Reno

PARTICIPATING INSTITUTIONS: Colorado State University, Michigan State University, New Mexico State University, Oregon State University, Purdue University, Rutgers, The State University of New Jersey, University of Arizona, University of California – Berkeley and Davis, University of Hawaii, University of Illinois at Urbana-Champaign, University of Minnesota, University of Nebraska, University of Tennessee, University of Vermont, University of Wisconsin – Madison, USDA ARS (Georgia), Utah State University, Washington State University

NORTH CENTRAL REGION

AWARDEE: Strategies to Improve Reproductive Efficiency for Sustainable Cattle Production (NC-1201)

TECHNICAL COMMITTEE CHAIR: J. Richard Pursley, Professor, Department of Animal Science, College of Agriculture & Natural Resources, Michigan State University

ADMINISTRATIVE ADVISOR: George W. Smith, Associate Director, AgBio Research, Associate Dean for Research, College of Agriculture and Natural Resources, Michigan State University

PARTICIPATING INSTITUTIONS: Kansas State University, Michigan State University, Mississippi State University, North Dakota State University, South Dakota State University, Texas A&M University, University of Illinois at Urbana-Champaign, University of Missouri, University of Nebraska, University Wisconsin – Madison, USDA-ARS (Nebraska), Virginia Polytechnic Institute and State University

PRESENTATION OF THE EXPERIMENT STATION SECTION EXCELLENCE IN LEADERSHIP AWARDS

PRESENTERS: J. Scott Angle, Director, National Institute of Food and Agriculture, U.S. Department of Agriculture
George Hopper, Dean, College of Agriculture and Life Sciences, Director, Mississippi Agriculture and Forestry Experiment Station, Mississippi State University

ASSOCIATION OF (1890) RESEARCH ADMINISTRATORS

AWARDEE: Mortimer Neufville, President & Chief Executive Officer, 1890 Universities Foundation

NORTHEAST REGION

AWARDEE: Cameron Faustman, Associate Dean, College of Agriculture, Health and Natural Resources, Associate Director, Storrs Agricultural Experiment Station, University of Connecticut

WESTERN REGION

AWARDEE: Brett Hess, Executive Director, Western Association of Agricultural Experiment Station Directors, Former Director, Wyoming Agricultural Experiment Station and Associate Dean for Research, University of Wyoming

NORTH CENTRAL REGION

AWARDEE: Joseph P. Colletti, Senior Associate Dean and Associate Director of the Iowa Agriculture and Home Economics Experiment Station, Iowa State University

SOUTHERN REGION

AWARDEE: **Saied Mostaghimi**, Director, Virginia Agricultural Experiment Station and Associate Dean for Research and Graduate Studies, College of Agriculture and Life Sciences, Virginia Polytechnic Institute and State University

NATIONAL EXPERIMENT STATION SECTION DIVERSITY AND INCLUSION AWARD

AWARDEES: **Jeff Jacobsen**, Diversity Catalyst Committee, North Central Regional Association of State Agricultural Experiment Station Directors (NCRA)
Neil Knobloch and Levon Esters, The Mentoring@Purdue Team, Purdue University, 2018

RECOGNITION OF THE FOOD SYSTEMS LEADERSHIP INSTITUTE OF FELLOWS, COHORT 13

PRESENTERS: **Kenneth L. Esbenshade**, Director, Food Systems Leadership Institute, North Carolina State University
Carol Reilly, Program Specialist, Food Systems Leadership Institute, North Carolina State University

AWARDEES: **Olga Bolden-Tiller**, Professor of Animal Science; Department Head -Department of Agricultural and Environmental Sciences; Assistant Dean of Development, College of Agriculture, Environment and Nutrition Sciences, Tuskegee University
Richard Bonanno, Associate Dean, College of Agriculture and Life Sciences, Director, North Carolina Cooperative Extension Service, North Carolina State University
Jake Bowman, Department Chair and Professor, Department of Entomology and Wildlife Ecology, University of Delaware

Ashli Brown, State Chemist, Associate Professor, Department of Biochemistry, Molecular Biology, Entomology, and Plant Pathology, Mississippi State University

Michael R. Burchell II, Professor and Department Extension Leader, Department of Biological and Agricultural Engineering, North Carolina State University

Graham Cochran, Associate Dean for Operations, College of Food, Agricultural, and Environmental Sciences, The Ohio State University

John Cranfield, Associate Dean for External Relations, Ontario Agricultural College, University of Guelph

Juan Marcos Fernandez, Associate Dean and Director of Academic Programs, College of Agriculture, Purdue University

David Fernandez, Interim Assistant Dean of Academic Programs, School of Agriculture, Fisheries and Human Sciences, University of Arkansas at Pine Bluff

Bryan Garton, Senior Associate Dean and Director of Academic Programs, College of Agriculture, Food and Natural Resources, University of Missouri

Amy Grunden, William Neal Reynolds Distinguished Professor, Department of Plant and Microbial Biology, North Carolina State University

Vanessa Jackson, Chair, Department of Retailing and Tourism Management, University of Kentucky

Carolyn J. Lawrence-Dill, Professor of Genetics, Development and Cell Biology, Chair of Graduate Interdepartmental Bioinformatics and Computational Biology, Iowa State University

Terry Niblack, Senior Associate Dean, College of Food, Agricultural, and Environmental Sciences, The Ohio State University

Vara Prasad, *University Distinguished Professor and Director of Feed the Future Innovation Lab for Collaborative Research Sustainable Intensification, College of Agriculture, Kansas State University*

James P. Prince, *Associate Dean for Research and Graduate Programs, College of Agriculture, Food and Environmental Sciences, Cal Poly San Luis Obispo*

Robert Roberts, *Professor and Head, Department of Food Science, The Pennsylvania State University*

Clint Rowe, *Manager, Research and Development, Perdue Foods*

Katie Thrush, *Section Manager, Evidence Development and Compliance, Abbott Nutrition, Columbus, OH*

Anne Veeger, *Vice Provost, Academic & Faculty Initiatives, University of Rhode Island*

John R. Vreyens, *Director, Global Initiatives, University of Minnesota Extension*

Curt Weller, *Head, Department of Food Science and Technology, University of Nebraska-Lincoln*

Hazel Wetzstein, *Head, Department of Horticulture and Landscape Architecture, Purdue University*

Todd Winters, *Dean, College of Agriculture and Applied Sciences, University of Tennessee at Martin*

Jeff Young, *Director for Urban Extension, Cooperative Extension Service, University of Kentucky*

3:30–4:45 p.m. Sapphire A

■ Celebrating Excellence in The Human Sciences: Award Winner Presentations

LIFETIME ACHIEVEMENT AWARD

AWARDEE: **June Henton**, *Dean Emerita, College of Human Sciences, Auburn University*

ELLEN SWALLOW RICHARDS PUBLIC SERVICE AWARD

AWARDEE: **Sonny Ramaswamy**, *President, Northwest Commission on Colleges and Universities and Director Emeritus, National Institute of Food and Agriculture, U. S. Department of Agriculture*

OUTSTANDING ENGAGEMENT AWARD

AWARDEE: **Julie Garden-Robinson**, *Professor and Extension Specialist, Department of Health, Nutrition, and Exercise Sciences, College of Human Development and Education, North Dakota State University*

UNDERGRADUATE RESEARCH MENTOR AWARD

AWARDEE: **Elizabeth L. Stegemöller**, *Associate Professor and Director, Graduate Neuroscience Program, Department of Kinesiology, College of Human Sciences, Iowa State University*

CONCURRENT SESSIONS AND BUSINESS MEETINGS

All annual meeting participants are invited to attend these sessions designed to be informative to higher education professionals from across the campus. Choose from more than 125 business meetings, working group sessions, and professional development opportunities offering information, ideas, and solutions to the critical issues facing public research universities. The sessions presented here are organized by APLU Councils and/or Commissions and affiliates. Sessions are open to all Annual Meeting participants, unless otherwise noted.

Councils

APLU's councils enable senior public university leaders working in similar positions to come together to address critical issues and expand their knowledgebase within their professional area of expertise.

COUNCIL OF 1890 UNIVERSITIES (1890S)

The Council of 1890 Universities represents the interests of 1890 land-grant institutions. The Council works to ensure and increase funding, present a unified approach for the presentation of views regarding 1890 institutions, and serve as a forum to share ideas and resources. The Council works with other 1890 associations in developing a comprehensive agenda regarding congressional and federal policies and programs impacting 1890 institutions.

SUNDAY, NOVEMBER 10

1:30–2:30 p.m. ■ Aqua 311

■ Building Alignment in Cross-Campus Teams to Support Student Success

JOINT SESSION WITH THE COUNCIL ON STUDENT AFFAIRS, COMMISSIONS ON ACCESS, DIVERSITY, & EXCELLENCE, AND INTERNATIONAL ISSUES, AND POWERED BY PUBLICS

From academic departments to administrative offices, the focus of many faculty, staff, and administrators on college campuses is the success of the students they serve. New research shows the benefits of aligning departments across the university to improve student success efforts in a holistic manner. This session will address the various ways cross-campus teams

are formed and operate. Highlights of the session include a panel discussing ways in which the offices of the Provost, Student Affairs, Diversity, Institutional Research, and International can effectively lead cross-campus teams and strategies to overcome the traditional silo structure of universities. Attendees will also participate in small group discussions where they will develop action plans for establishing new or improving upon existing cross-campus teams.

PANELISTS: **Gesele Durham**, *Associate Provost, Institutional Effectiveness and Planning, George Mason University*
Lisa Erwin, *Vice Chancellor for Student Life and Dean of Students, University of Minnesota Duluth*
Georgianna Melendez, *Assistant Chancellor for Diversity, Equity, and Inclusion, University of Massachusetts Boston*
Meghna Ramaswamy, *Director, International Research, University of Saskatchewan*

3:15–4:15 p.m.

INSTITUTIONAL STRATEGIES SESSIONS

Choose one of the sessions presented by APLU, see pages 11–12 for descriptions and locations. Recommended for the Council of 1890s:

- **Institutional Strategies for Community Engagement**
- **Institutional Strategies for Degree Completion**
- **Institutional Strategies for Global Learning, Research, and Engagement**
- **Institutional Strategies for Innovation and Economic Prosperity**

4:30–6:00 p.m. ■ **Indigo BCDFGH**

KEYNOTE SESSION

- **In Service**

See page 8 for more details.

6:00–7:30 p.m. ■ **Indigo AE & Indigo Terrace**

- **Welcome Reception**

See page 8 for more details.

MONDAY, NOVEMBER 11

Noon–1:15 p.m. ■ **Indigo Ballroom**

MONDAY LUNCHEON

- **Understanding Student Debt**

See page 9 for more details.

1:30–2:45 p.m. ■ **Aqua 311B**

- **Applying DEI Principles on Campuses and in Communities**

JOINT SESSION WITH THE COMMISSION ON ACCESS, DIVERSITY, & EXCELLENCE AND CFERR-BAA COOPERATIVE EXTENSION SECTION/EXTENSION COMMITTEE ON ORGANIZATION & POLICY

Learn the principles of diversity, equity, and inclusion in academic programs and university engagement. Two case studies will be presented. The first includes a university that has had success in including diversity in undergraduate and graduate engineering programs and the second will feature Cooperative Extension's community engagement program on coming together for racial understanding where these principles have and/or might be better engaged.

PANELISTS: **Fred Bonner**, *Endowed Chair, College of Education, Prairie View A&M University*
Rachel Welborn, *Associate Director, Mississippi State University/Southern Rural Development Center*

3:30–4:45 p.m. ■ **Sapphire 400**

- **Council of 1890 Universities Presidents' and Chancellors' Business Meeting**

1890 UNIVERSITIES PRESIDENTS AND CHANCELLORS ONLY

CHAIR: **Kent Smith**, *President, Langston University*
SPEAKERS: **Eugene Anderson**, *Vice President, APLU Office of Access and Success*
Mortimer Neufville, *President and CEO, 1890 Universities Foundation*

5:00–5:30 p.m. ■ Sapphire 400

■ 1890 and CGA Federal Policy Discussion

JOINT SESSION WITH THE COUNCIL ON GOVERNMENTAL AFFAIRS

SPEAKERS: **Eugene Anderson**, *Vice President, APLU Office of Access & Success*
Deborah Altenburg, *Assistant Vice President, APLU Office of Congressional & Governmental Affairs*
Craig Lindwarm, *Vice President, APLU Office of Congressional & Governmental Affairs*

TUESDAY, NOVEMBER 12

CLOSING SESSIONS

8:30–9:15 a.m. ■ Indigo CDGH

■ The Empowered University

See page 10 for more details.

9:15–9:45 a.m. ■ Indigo CDGH

■ Higher Education & Immigration Policy

See page 10 for more details.

9:45–10:45 a.m. ■ Indigo CDGH

■ The 2020 Election: Where Does It Stand?

See page 10 for more details.

COUNCIL OF PRESIDENTS (COP)

The Council of Presidents is composed of the chief executives of APLU member colleges and universities and systems. Under the organization of the council, chief executive officers develop a working agenda and programs for APLU.

SUNDAY, NOVEMBER 10

3:15–4:15 p.m.

INSTITUTIONAL STRATEGIES SESSIONS

Choose one of the sessions presented by APLU, see pages 11–12 for descriptions and locations. Recommended for CoP:

■ Institutional Strategies for Community Engagement

■ Institutional Strategies for Degree Completion

■ Institutional Strategies for Global Learning, Research, and Engagement

■ Institutional Strategies for Innovation and Economic Prosperity

4:30–6:00 p.m. ■ Indigo BCDFGH

KEYNOTE SESSION

■ In Service

See page 8 for more details.

6:00–7:30 p.m. ■ Indigo AE & Indigo Terrace

■ Welcome Reception

See page 9 for more details.

MONDAY, NOVEMBER 11

7:00–7:30 a.m. ▪ Sapphire A

■ Council of Presidents' Meeting Breakfast

COUNCIL MEMBERS ONLY

7:00–11:55 a.m. ▪ Sapphire A

■ Council of Presidents' Meeting

COUNCIL MEMBERS ONLY

Noon–1:15 p.m. ▪ Indigo Ballroom

MONDAY LUNCHEON

■ Understanding Student Debt

See page 9 for more details.

1:30–2:45 p.m. ▪ Indigo 206

■ Clodius Forum: A Discussion on Legal and Ethical Issues for the Presidential Couple

JOINT SESSION WITH THE COUNCIL OF PRESIDENTS'
& CHANCELLORS' SPOUSES/PARTNERS

What are the legal and ethical issues regarding the presidential spouse? We will cover topics from spousal employment and role to residence and communications and anything in between. There will be ample time for discussion and questions.

PANELISTS:

Jonathan Alger, *President, James Madison University*

Mary Ann Alger, *First Lady, James Madison University*

Amy Hass, *Vice President and General Counsel,
University of Florida*

Michelle Parker, *General Counsel, Northern Arizona University*

TUESDAY, NOVEMBER 12

CLOSING SESSIONS

8:30–9:15 a.m. ▪ Indigo CDGH

■ The Empowered University

See page 10 for more details.

9:15–9:45 a.m. ▪ Indigo CDGH

■ Higher Education & Immigration Policy

See page 10 for more details.

9:45–10:45 a.m. ▪ Indigo CDGH

■ The 2020 Election: Where Does It Stand?

See page 10 for more details.

COUNCIL OF PRESIDENTS' & CHANCELLORS' SPOUSES/PARTNERS (CPCSP)

The Council of Presidents and Chancellors' Spouses/Partners facilitates exchanges among the spouses and partners of public university CEOs. As this role has evolved over time, the council promotes best practices and provides an opportunity for informational exchanges.

SUNDAY, NOVEMBER 10

3:15–4:15 p.m. ▪ Indigo 202B

■ CPCSP Meet & Greet for Spouses/Partners

Come and meet others on the council. Newcomers are particularly encouraged to join us!

4:30–6:00 p.m. ▪ Indigo BCDFGH

KEYNOTE SESSION

■ In Service

See page 8 for more details.

6:00–7:30 p.m. ▪ Indigo AE & Indigo Terrace

■ Welcome Reception

See page 9 for more details.

MONDAY, NOVEMBER 11

8:15–9:45 a.m. ▪ Indigo 206

■ A Communications Primer for the Presidential Spouse, Part I

This is part one of a two-part workshop that will cover a variety of public image topics as they apply to the Presidential Spouse such as public speaking, media training, encouraging civil discourse, branding yourself, and serving on a board.

SPEAKERS: **Pam Lepley**, *Vice President, University Relations, Virginia Commonwealth University*

10:30–11:45 a.m. ▪ Indigo 206

■ A Communications Primer for the Presidential Spouse, Part II

This is part two of a two-part workshop that will cover a variety of public image topics as they apply to the Presidential Spouse such as public speaking, media training, encouraging civil discourse, branding yourself, and serving on a board.

SPEAKERS: **Grant J. Heston**, *Chief of Staff and Vice President for Communications and Marketing, University of Central Florida*
Nancy Paton, *Vice President, Strategic Communications and Marketing, University of Florida*

Noon–1:15 p.m. ▪ Indigo Ballroom

MONDAY LUNCHEON

■ Understanding Student Debt

See page 9 for more details.

1:30–2:45 p.m. ■ Indigo 206

■ Clodius Forum: A Discussion on Legal and Ethical Issues for the Presidential Couple

JOINT SESSION WITH THE COUNCIL OF PRESIDENTS

What are the legal and ethical issues regarding the presidential spouse? We will cover topics from spousal employment and role to residence and communications and anything in between. There will be ample time for discussion and questions.

PANELISTS: **Jonathan Alger**, *President, James Madison University*
Mary Ann Alger, *First Lady, James Madison University*
Amy Hass, *Vice President and General Counsel, University of Florida*
Michelle Parker, *General Counsel, Northern Arizona University*

3:30–4:45 p.m. ■ Indigo 206

■ CPCSP Planning Meeting

Open to anyone in the Council of Presidents' and Chancellors' Spouses/Partners who would like to help plan our 2020 sessions.

TUESDAY, NOVEMBER 12

CLOSING SESSIONS

8:30–9:15 a.m. ■ Indigo CDGH

■ The Empowered University

See page 10 for more details.

9:15–9:45 a.m. ■ Indigo CDGH

■ Higher Education & Immigration Policy

See page 10 for more details.

9:45–10:45 a.m. ■ Indigo CDGH

■ The 2020 Election: Where Does It Stand?

See page 10 for more details.

COUNCIL ON ACADEMIC AFFAIRS (CAA)

The Council on Academic Affairs (CAA) is composed of chief academic officers—provosts or senior vice presidents for academic affairs where they are a campus's second ranking officer. The CAA provides a forum for discussion of: trends in higher education and the public mission; funding patterns and budget strategies; teaching and learning innovations; student success; faculty roles and rewards; academic programs, planning, and advising; research and publication; and service and engagement with other sectors. The CAA advises the Council of Presidents and the APLU Board of Directors regarding association priorities and agendas in these areas.

SUNDAY, NOVEMBER 10

7:00–8:15 a.m. ■ Indigo AE

■ CAA Breakfast Meet and Greet

Look for the reserved tables in the ballroom.

7:00–8:15 a.m. ■ Indigo AE

■ Advisory Committee on Faculty Affairs Meet and Greet

Look for the reserved tables in the ballroom.

8:15–9:45 a.m. ■ Sapphire D

■ Diversifying the Professoriate: Understanding the Issues Institutions Face and What Representation Really Means

JOINT SESSION WITH THE COUNCILS ON RESEARCH AND STUDENT AFFAIRS AND COMMISSION ON ACCESS, DIVERSITY, & EXCELLENCE

Effectively diversifying the academy has continued to elude many institutional leaders despite significant efforts to support underrepresented candidates. But what does representation look like? Should faculty be representative of student bodies or of the state? How do institutions increase their awareness and understanding of the issues they face around faculty diversification? This session will focus on these topics and on Aspire: The National Alliance for Inclusive & Diverse STEM Faculty. One of the goals of this session is to motivate institutions to consider how they

might leverage mutually reinforcing efforts to develop inclusive practices to support the recruitment, hiring, and retention of inclusive and diverse faculty.

MODERATOR: **Tonya Peebles**, *Associate Dean for Equity and Inclusion, College of Engineering and Professor of Chemical Engineering, The Pennsylvania State University*

PANELISTS: **Gina Sanchez Gibau**, *Associate Vice Chancellor for Faculty Diversity and Inclusion and Associate Professor of Anthropology, IUPUI*

Douglas Haynes, *Vice Chancellor for Diversity, Equity, and Inclusion; Director, UCI ADVANCE Program; and Professor of History, University of California, Irvine*

Beth Ruedi, *Director of Operations, SEA Change, American Association for the Advancement of Science*

J. Luke Wood, *Chief Diversity Officer and Distinguished Professor of Education, San Diego State University*

10:30–11:45 a.m. ■ Sapphire D

■ Revitalizing Graduate Programs

Graduate STEM education lags behind the evolution of science and engineering, students' career goals and paths, and the skills necessary for a rapidly evolving high-tech workforce. In response to this disconnect, the National Academies of Sciences, Engineering and Medicine created a committee to analyze the current system and identify strategies to improve its alignment with current needs and trends. The committee's report, *Graduate STEM Education for the 21st Century*, lays out what would be an ideal graduate STEM education and ways to achieve it, specifying specific actions for each of the stakeholders and participants in the system. This session will discuss both the report and some of the initiatives already underway to modernize, not just STEM, but graduate education writ large in Canada and the United States.

MODERATOR: **Alan Leshner**, *CEO, American Association for the Advancement of Science*

PANELISTS: **Cynthia Fuhrmann**, *Assistant Dean, Career & Professional Development, Graduate School of Biomedical Sciences; Associate Professor, Biochemistry and Molecular Pharmacology; Principal Investigator, Professional Development Hub, University of Massachusetts Medical School*

Nirmala Kannankutty, *Acting Division Director, Division of Graduate Education, National Science Foundation*

Dru Marshall, *Provost and Vice-President (Academic), University of Calgary*

Suzanne Ortega, *President, Council of Graduate Schools*

10:30–11:45 a.m. ■ Sapphire 400B

■ Advisory Committee on Faculty Affairs Executive Committee Meeting

Noon–1:15 p.m. ■ Sapphire 410B

■ CAA Executive Committee Luncheon

EXECUTIVE COMMITTEE MEMBERS ONLY

CHAIR: **Rick Miranda**, *Provost and Executive Vice President, Colorado State University*

1:30–2:30 p.m. ■ Sapphire GH

■ Promotion and Tenure for Public Engagement and Societal Benefit

JOINT SESSION WITH THE COUNCIL ON RESEARCH AND COMMISSIONS ON ECONOMIC & COMMUNITY ENGAGEMENT AND INTERNATIONAL ISSUES

As universities engage multiple publics more extensively, there are signs of potential change to traditional guidelines for faculty promotion and advancement. What are the current opportunities and challenges to incorporating credit for interdisciplinary research collaboration, more widespread engagement of stakeholders from sectors outside of one's academic institution, and translating fundamental discoveries and scientific expertise to greater societal use?

MODERATOR: **Karen Hanson**, *Senior Vice President for Academic Affairs and Provost, University of Minnesota*

PANELISTS: **Roger Brindley**, *USF System Vice President, USF World, University of South Florida*

David Conover, *Vice President for Research and Innovation, University of Oregon*

Duane Nellis, *President, Ohio University*

3:15–4:15 p.m.

INSTITUTIONAL STRATEGIES SESSIONS

Choose one of the sessions presented by APLU, see pages 11–12 for descriptions and locations. Recommended for CAA:

- **Institutional Strategies for Community Engagement**
- **Institutional Strategies for Degree Completion**
- **Institutional Strategies for Global Learning, Research, and Engagement**
- **Institutional Strategies for Innovation and Economic Prosperity**

4:30–6:00 p.m. ■ Indigo BCDFGH

KEYNOTE SESSION

- **In Service**

See page 8 for more details.

6:00–7:30 p.m. ■ Indigo AE & Indigo Terrace

- **Welcome Reception**

See page 9 for more details.

MONDAY, NOVEMBER 11

8:15–9:45 a.m. ■ Aqua Salon ABCD

- **Protecting U.S. Science from Undue Foreign Influence**

JOINT SESSION WITH THE COUNCILS ON GOVERNMENTAL AFFAIRS, RESEARCH, AND STRATEGIC COMMUNICATIONS AND COMMISSION ON INTERNATIONAL INITIATIVES

For over a half century, U.S. world leadership in fundamental science has been based on a strong partnership between the federal government and public research universities. Openness and collaboration have been key to the partnership. Despite periodic revisiting of security policies such as during the

Cold War, the U.S. has strived to attract the best scientists and students on the planet to conduct their research here. As U.S. economic and security interests are threatened by foreign interference and attempted influence, how are federal research agencies and public research universities working together to address foreign threats while preserving scientific collaboration?

MODERATOR: **Roger Wakimoto**, *Vice Chancellor for Research, University of California, Los Angeles*

PANELISTS: **Jodi Black**, *Deputy Director, Office of Extramural Research, National Institutes of Health*

Chris Fall, *Director of the Office of Science, U.S. Department of Energy*

Rebecca Keiser, *Head, Office of International Science and Engineering, National Science Foundation*

10:30–11:45 a.m. ■ Sapphire E

- **Workshop: Ready for Jobs, Careers, and a Lifetime**

JOINT SESSION WITH THE COMMISSION ON ECONOMIC & COMMUNITY ENGAGEMENT

In 2017, APLU released a report, *Ready for Jobs, Careers, and a Lifetime*, that called on public universities to produce students that have benefited from, both, a broad-based liberal arts education and pragmatic workforce training and learning opportunities necessary to thrive in the 21st century globally competitive workplace. Partnerships between universities, government, employers, and other stakeholders are of paramount importance if higher education is to meet the demands of student preparedness. In this session, we'll explore the role of universities in workforce development with a special focus on the role of the academic enterprise in preparing students for careers with partners from key sectors.

FACILITATORS: **Debbie Hughes**, *Senior Advisor, Walmart Foundation*

Amanda Winters, *Program Director Economic Opportunity Division, National Governors Association*

David Wu, *Provost and Executive Vice President, George Mason University*

10:30–11:45 a.m. ■ Cobalt 500

■ Reaffirming the Value of Faculty Service Within the Public and Land-Grant Missions

Service is foundational to the mission of public and land-grant universities yet remains the least valued of the three pillars of academic work. Research shows that university service is not equitably distributed. Women and faculty from under-represented groups shoulder a disproportionate amount, often presenting obstacles to career advancement. The ongoing crisis of public confidence in higher education has also prompted universities to reaffirm their mission of service to communities by redefining and redeveloping a culture of engagement. This, too, presents a challenge because public engagement activities often do not align well with the traditional criteria used to evaluate promotion and tenure cases. This session will tackle the following issues: 1) a taxonomy for service activities; 2) institutional tools for service assignment and recognition; 3) a reasonable alignment of service with our other two missions; 4) how to engage with communities in this conversation.

MODERATOR: **Kathy Johnson**, *Executive Vice Chancellor, Chief Academic Officer, IUPUI*

PANELISTS: **Steven Abel**, *Associate Provost for Engagement, Purdue University*
J. Christopher Brown, *Vice Provost for Faculty Development, University of Kansas*
Matthew Kinservik, *Vice Provost for Faculty Affairs, University of Delaware*
Beth Mitchneck, *Professor Emerita, University of Arizona*

Noon–1:15 p.m. ■ Indigo Ballroom

MONDAY LUNCHEON

■ Understanding Student Debt

See page 9 for more details.

1:30–2:45 p.m. ■ Sapphire D

■ What's Zip Codes Got to Do with It? Taking an Asset Approach To Admissions

JOINT SESSION WITH THE COUNCIL ON STUDENT AFFAIRS, COALITION OF URBAN SERVING UNIVERSITIES, COMMISSION ON ACCESS, DIVERSITY, & EXCELLENCE, AND POWERED BY PUBLICS

Universities across the country are faced with increased scrutiny around admissions processes with national headlines abounding on the topic. Nowhere is this issue more important than for public universities given their unique missions of serving their states and the country by providing increased access to high-quality education. But with a growing number of court cases and state policies that ban race as a consideration, how do institutions appropriately increase opportunity to students who may have had limited academic opportunities? This session explores the power and importance of understanding and accounting for environmental contexts, like neighborhood and high school characteristics, in admission processes. The panel will focus on various evidence-based holistic enrollment strategies that can be employed at scale and at cost to identify diverse student populations who can benefit the most from college degrees.

MODERATOR: **Michael Rao**, *President, Virginia Commonwealth University*

PANELISTS: **Philip Ballinger**, *Associate Vice Provost for Enrollment Management, University of Washington*
Stephen Handel, *Executive Director, Strategic Higher Education Assessment, The College Board*
Kathie Maynard, *Associate Dean for Innovations and Community Partnerships, University of Cincinnati*

1:30–2:45 p.m. ▪ Sapphire OP

■ Institutional Models for Securing Academic Research (Closed Session)

BY INVITATION ONLY

JOINT SESSION WITH THE COUNCIL ON RESEARCH

This will be an interactive session in which attendees will discuss effective policy, practices, and resources for addressing undue foreign influence in academic research. This session is by invitation only.

MODERATOR: **Joseph Glover**, *Provost and Senior Vice President, Academic Affairs, University of Florida*

PANELISTS: **Simon J. Atkinson**, *Vice Chancellor for Research, University of Kansas*

Mary Croughan, *Vice President for Research, University of Nevada, Las Vegas*

Nicholas P. Jones, *Executive Vice President and Provost, The Pennsylvania State University*

3:30–4:45 p.m. ▪ Sapphire OP

■ CAA Business Meeting

CHAIR: **Rick Miranda**, *Provost and Executive Vice President, Colorado State University*

3:30–4:45 p.m. ▪ Cobalt 501BC

■ Advisory Committee on Faculty Affairs Business Meeting

5:00–7:00 p.m. ▪ Indigo Terrace

■ Aspire Alliance, CAA, & Friends Reception

Aspire seeks to develop inclusive and diverse STEM faculty across the nation by aligning and reinforcing professional development, hiring, and retention practices of STEM faculty simultaneously at institutional, regional, and national levels. Anchored by APLU and the Center for the Integration of Research, Teaching and Learning (CIRTL), over 55 universities, three regional collaboratives (Southern CA, IA, TX), and more than 35 cross-sector partners have committed to collectively achieving this goal.

TUESDAY, NOVEMBER 12

CLOSING SESSIONS

8:30–9:15 a.m. ▪ Indigo CDGH

■ The Empowered University

See page 10 for more details.

9:15–9:45 a.m. ▪ Indigo CDGH

■ Higher Education & Immigration Policy

See page 10 for more details.

9:45–10:45 a.m. ▪ Indigo CDGH

■ The 2020 Election: Where Does It Stand?

See page 10 for more details.

COUNCIL ON GOVERNMENTAL AFFAIRS (CGA)

The Council on Governmental Affairs (CGA) includes the university officials who serve as the principal points of contact between their institutions and their congressional delegations and federal agencies. A very active APLU council, the CGA is a network of university government relations professionals who advocate for public research universities in federal legislation and federal policy. Members of the CGA are based on campus and/or in the institution's Washington, DC office. Typically, they are vice presidents, directors and assistant directors for government affairs/relations for their institution.

SUNDAY, NOVEMBER 10

8:15–9:45 ▪ Cobalt 501C

■ CGA Executive Committee Meeting

EXECUTIVE COMMITTEE MEMBERS ONLY

CHAIR: **John Latini**, *Director of Federal Relations,
The Pennsylvania State University*

10:30–11:45 a.m. ▪ Sapphire M

■ The Role of Universities in Catalyzing Manufacturing Innovation and Competitiveness

JOINT SESSION WITH THE COUNCIL ON RESEARCH AND
COMMISSION ON ECONOMIC & COMMUNITY ENGAGEMENT

The manufacturing sector makes an invaluable contribution to the economic well-being of the United States and North America at large. With the advent of advanced manufacturing and increased competition for manufacturing jobs and firms from overseas, universities stand uniquely positioned to strengthen the advanced manufacturing workforce and innovation pipeline in partnership with federal and industry partners. APLU's Commission on Economic and Community

Engagement (CECE) will soon embark on a new initiative to better understand and promote the role universities in catalyzing manufacturing competitiveness.

MODERATOR: **Patrick D. Gallagher**, *Chancellor, University of Pittsburgh*

PANELISTS: **Mridul Gautam**, *Vice President for Research and Innovation,
University of Nevada, Reno*

Matt O'Keefe, *Executive Director, Center for
Manufacturing Excellence, University of Mississippi*

Phil Weilerstein, *President, VentureWell*

10:30–11:45 a.m. ▪ Sapphire P

■ Cloudy with a Risk of Severe Conditions: Forecasting Prospects of Federal Research Funding into the Future

JOINT SESSION WITH THE COUNCIL ON RESEARCH

In early August, Congress and the White House agreed to a budget deal that should protect science agencies from the sharp cuts threatened by declining budget caps. This might be good for science research funding in Fiscal Year 2020, but competition for federal dollars is fierce and the future is not quite as clear. Join budget experts from the American Association for the Advancement of Science and the Bipartisan Policy Center to discuss both near-term budgets for federal science agencies and the longer-term budget implications of a debt that will require the U.S. government to borrow a quarter for every dollar the government spends.

MODERATOR: **Rachelle Johnson**, *Director of Government Relations,
Kentucky State University*

PANELISTS: **Bill Hoagland**, *Senior Vice President, Bipartisan Policy Center*
Matt Hourihan, *Director, R&D Budget and Policy Program,
American Association for the Advancement of Science*

Noon–1:15 p.m. ▪ Sapphire IJ

■ CGA Lunch & Legislative and Policy Strategy Session Part I

CGA MEMBERS ONLY

The CGA will meet to strategize on how best to advance public universities' advocacy priorities including support for university research, a favorable reauthorization of the Higher Education Act, immigration issues, and more.

CHAIR: **John Latini**, *Director of Federal Relations,
The Pennsylvania State University*

1:30–2:30 p.m. ■ Sapphire KL

■ 2020 Elections on The Horizon: The Public University Role Amidst Hyper Political Polarization

JOINT SESSION WITH THE COUNCILS ON STRATEGIC COMMUNICATIONS AND STUDENT AFFAIRS

With the 2020 election heating up, public university campuses find themselves subject to the same corrosive political climate that infects the nation but with a special mission to be better. How can public universities best foster civil discourse, host diverse political perspectives, and limit the damage when it goes awry? Three university leaders, including two who are former members of the U.S. House of Representatives, will discuss how public universities can lean in to their special role even in the most challenging of climates.

MODERATOR: **Mica Stark**, *Associate Vice President for Communications and Public Affairs, University of New Hampshire*

PANELISTS: **Virginia Hardy**, *Vice Chancellor for Student Affairs, East Carolina University*
Mark Kennedy, *President, University of Colorado*
Martin Meehan, *President, University of Massachusetts*

3:15–4:15 p.m. ■ Sapphire IJ

■ CGA Legislative & Policy Strategy Session Part II and Business Meeting

CGA MEMBERS ONLY

The CGA will meet to strategize on how best to advance public universities' advocacy priorities including support for university research, a favorable reauthorization of the Higher Education Act, immigration issues, and more. Additionally, the CGA will conduct a business meeting and vote on the 2020 CGA Executive Committee and officers.

CHAIR: **John Latini**, *Director of Federal Relations, The Pennsylvania State University*

4:30–6:00 p.m. ■ Indigo BCDFGH

KEYNOTE SESSION

■ In Service

See page 8 for more details.

6:00–7:30 p.m. ■ Indigo AE & Indigo Terrace

■ Welcome Reception

See page 9 for more details.

MONDAY, NOVEMBER 11

8:15–9:45 a.m. ■ Aqua Salon ABCD

■ Protecting U.S. Science from Undue Foreign Influence

JOINT SESSION WITH THE COUNCILS ON ACADEMIC AFFAIRS, RESEARCH, AND STRATEGIC COMMUNICATIONS AND COMMISSION ON INTERNATIONAL INITIATIVES

For over a half century, U.S. world leadership in fundamental science has been based on a strong partnership between the federal government and public research universities. Openness and collaboration have been key to the partnership. Despite periodic revisiting of security policies such as during the Cold War, the U.S. has strived to attract the best scientists and students on the planet to conduct their research here. As U.S. economic and security interests are threatened by foreign interference and attempted influence, how are federal research agencies and public research universities working together to address foreign threats while preserving scientific collaboration?

MODERATOR: **Roger Wakimoto**, *Vice Chancellor for Research, University of California, Los Angeles*

PANELISTS: **Jodi Black**, *Deputy Director, Office of Extramural Research, National Institutes of Health*

Chris Fall, *Director of the Office of Science, U.S. Department of Energy*

Rebecca Keiser, *Head, Office of International Science and Engineering, National Science Foundation*

10:30–11:45 a.m. ■ Aqua Salon ABCD

■ Public Impact Research Report Launch

JOINT SESSION WITH THE COUNCILS ON RESEARCH AND STRATEGIC COMMUNICATIONS AND COMMISSION ON ECONOMIC & COMMUNITY ENGAGEMENT

A new report on public impact research (PIR) intends to stimulate greater and more diverse public engagement in garnering the contributions of university research to the nation. This discussion will highlight examples of grand challenge research and other university engagement as models for how the

concept of PIR might be used by the university community. This effort is the culmination of a year's effort by over 60 university leaders and includes contributions from a team of APLU councils.

MODERATOR: **Sandra Brown**, *Vice Chancellor for Research, University of California, San Diego*

PANELISTS: **Abhijit Afzalpurkar**, *Director, Innovation Partnerships, Thermo Fisher Scientific Inc.*

David Graham, *Chief Innovation Officer, City of Carlsbad, California*

Robin Kaler, *Associate Chancellor for Public Affairs, University of Illinois at Urbana-Champaign*

Gabriel López, *Vice President for Research, University of New Mexico*

Noon-1:15 p.m. ■ Indigo Ballroom

MONDAY LUNCHEON

■ Understanding Student Debt

See page 9 for more details.

1:30-2:45 p.m. ■ Sapphire KL

■ \$1.6T Student Debt: Is this a Crisis?

JOINT SESSION WITH THE COUNCIL ON STRATEGIC COMMUNICATIONS
AND COMMISSION ON INFORMATION, MEASUREMENT, & ANALYSIS

Public and policymaker perceptions of higher education are significantly shaped by student debt with the overall number drawing a lot of attention. Is this a national crisis though as some increasingly argue? Expert panelists will breakdown the \$1.5T in student debt to identify the parts of the debt that should be of biggest concern and discuss how student debt drives perception and policy including the 2020 presidential campaign.

MODERATOR: **Crystal Martinez**, *Director of Education, University of California*

PANELISTS: **Sandy Baum**, *Nonresident Senior Fellow, Center on Education Data and Policy, Urban Institute and Professor Emerita of Economics, Skidmore College*

Cinnamon Blair, *Chief Marketing and Communications Officer, The University of New Mexico*

Doug Lederman, *Editor and Co-founder, Inside Higher Ed*

3:30-4:45 p.m. ■ Sapphire KL

■ International Student Enrollment Declines: Why is it Happening and is there a Political Fix?

JOINT SESSION WITH THE COUNCIL ON GOVERNMENTAL AFFAIRS
AND COMMISSION ON INTERNATIONAL INITIATIVES

The global competition for students is getting tighter year by year. While the United States has been in the leading position for decades, its market share has steadily eroded over the past decade. While other countries are strengthening their policies to attract students, the climate for the United States grows increasingly challenging. Expert panelists will dig into the data to tell the deeper story on enrollment trends, discuss what other countries are doing to be more competitive, and assess the political and policy climate in the United States for reversing the trend.

MODERATOR: **Paul Weinberger**, *Director of Federal Relations, University of Illinois*

PANELISTS: **Jon Baselice**, *Executive Director of Immigration Policy, U.S. Chamber of Commerce*

David Di Maria, *Associate Vice Provost for International Education, University of Maryland, Baltimore County*

Debra Pozega Osburn, *Vice President, University Relations, University of Saskatchewan*

6:00-8:00 p.m. ■ Off-Site

■ CGA Off-Site Networking Event

CGA MEMBERS ONLY

TUESDAY, NOVEMBER 12

CLOSING SESSIONS

8:30–9:15 a.m. ▪ Indigo CDGH

■ The Empowered University

See page 10 for more details.

9:15–9:45 a.m. ▪ Indigo CDGH

■ Higher Education & Immigration Policy

See page 10 for more details.

9:45–10:45 a.m. ▪ Indigo CDGH

■ The 2020 Election: Where Does It Stand?

See page 10 for more details.

COUNCIL ON RESEARCH (COR)

The Council on Research (CoR) is composed of the senior research and graduate officers: vice presidents for research and graduate deans. CoR provides a forum for the discussion of research development and management, research policies and regulation, budget strategies, faculty roles, graduate education, research collaboration among universities and across sectors, and the importance of research to the overall mission of APLU member institutions. The group works closely with the Commission on Innovation, Competitiveness, and Economic Prosperity on issues related to intellectual property and technology development; and with the Council on Governmental Affairs in monitoring government legislation and regulations affecting campus-based research and graduate education.

SUNDAY, NOVEMBER 10

8:15–9:45 a.m. ▪ Sapphire D

■ Diversifying the Professoriate: Understanding the Issues Institutions Face and What Representation Really Means

JOINT SESSION WITH THE COUNCILS ON ACADEMIC AFFAIRS AND STUDENT
AFFAIRS AND COMMISSION ON ACCESS, DIVERSITY, & EXCELLENCE

Effectively diversifying the academy has continued to elude many institutional leaders despite significant efforts to support underrepresented candidates. But what does representation look like? Should faculty be representative of student bodies or of the state? How do institutions increase their awareness and understanding of the issues they face around faculty diversification? This session will focus on these topics and on Aspire: The National Alliance for Inclusive & Diverse STEM Faculty. One of the goals of this session is to motivate institutions to consider how they might leverage mutually reinforcing efforts to develop

inclusive practices to support the recruitment, hiring, and retention of inclusive and diverse faculty.

MODERATOR: **Tonya Peeples**, *Associate Dean for Equity and Inclusion, College of Engineering and Professor of Chemical Engineering, The Pennsylvania State University*

PANELISTS: **Gina Sanchez Gibau**, *Associate Vice Chancellor for Faculty Diversity and Inclusion and Associate Professor of Anthropology, IUPUI*

Douglas Haynes, *Vice Chancellor for Diversity, Equity, and Inclusion; Director, UCI ADVANCE Program; and Professor of History, University of California, Irvine*

Beth Ruedi, *Director of Operations, SEA Change, American Association for the Advancement of Science*

J. Luke Wood, *Chief Diversity Officer and Distinguished Professor of Education, San Diego State University*

10:30–11:45 a.m. ■ Sapphire M

■ The Role of Universities in Catalyzing Manufacturing Innovation and Competitiveness

JOINT SESSION WITH THE COUNCIL ON GOVERNMENTAL AFFAIRS
AND COMMISSION ON ECONOMIC & COMMUNITY ENGAGEMENT

The manufacturing sector makes an invaluable contribution to the economic well-being of the United States and North America at large. With the advent of advanced manufacturing and increased competition for manufacturing jobs and firms from overseas, universities stand uniquely positioned to strengthen the advanced manufacturing workforce and innovation pipeline in partnership with federal and industry partners. APLU's Commission on Economic and Community Engagement (CECE) will soon embark on a new initiative to better understand and promote the role universities in catalyzing manufacturing competitiveness.

MODERATOR: **Patrick D. Gallagher**, *Chancellor, University of Pittsburgh*

PANELISTS: **Mridul Gautam**, *Vice President for Research and Innovation, University of Nevada, Reno*

Matt O'Keefe, *Executive Director, Center for Manufacturing Excellence, University of Mississippi*

Phil Weilerstein, *President, VentureWell*

10:30–11:45 a.m. ■ Sapphire P

■ Cloudy with a Risk of Severe Conditions: Forecasting Prospects of Federal Research Funding into the Future

JOINT SESSION WITH THE COUNCIL ON GOVERNMENTAL AFFAIRS

In early August, Congress and the White House agreed to a budget deal that should protect science agencies from the sharp cuts threatened by declining budget caps. This might be good for science research funding in Fiscal Year 2020, but competition for federal dollars is fierce and the future is not quite as clear. Join budget experts from the American Association for the Advancement of Science and the Bipartisan Policy Center to discuss both near-term budgets for federal science agencies and the longer-term budget implications of a debt that will require the U.S. government to borrow a quarter for every dollar the government spends.

MODERATOR: **Rachelle Johnson**, *Director of Government Relations, Kentucky State University*

PANELISTS: **Bill Hoagland**, *Senior Vice President, Bipartisan Policy Center*
Matt Hourihan, *Director, R&D Budget and Policy Program, American Association for the Advancement of Science*

Noon–1:15 p.m. ■ Indigo 204A

■ CoR Executive Committee Meeting

EXECUTIVE COMMITTEE MEMBERS ONLY

CHAIR: **Sandra Brown**, *Vice Chancellor for Research, University of California, San Diego*

1:30–2:30 p.m. ■ Sapphire GH

■ Promotion and Tenure for Public Engagement and Societal Benefit

JOINT SESSION WITH THE COUNCIL ON ACADEMIC AFFAIRS AND COMMISSIONS
ON ECONOMIC & COMMUNITY ENGAGEMENT AND INTERNATIONAL ISSUES

As universities engage multiple publics more extensively, there are signs of potential change to traditional guidelines for faculty promotion and advancement. What are the current opportunities and challenges to

incorporating credit for interdisciplinary research collaboration, more widespread engagement of stakeholders from sectors outside of one's academic institution, and translating fundamental discoveries and scientific expertise to greater societal use?

MODERATOR: **Karen Hanson**, *Senior Vice President for Academic Affairs and Provost, University of Minnesota*

PANELISTS: **Roger Brindley**, *USF System Vice President, USF World, University of South Florida*

David Conover, *Vice President for Research and Innovation, University of Oregon*

Duane Nellis, *President, Ohio University*

3:15–4:15 p.m.

INSTITUTIONAL STRATEGIES SESSIONS

Choose one of the sessions presented by APLU, see pages 11–12 for descriptions and locations. Recommended for CoR:

■ **Institutional Strategies for Global Learning, Research, and Engagement**

■ **Institutional Strategies for Innovation and Economic Prosperity**

4:30–6:00 p.m. ■ **Indigo BCDFGH**

KEYNOTE SESSION

■ **In Service**

See page 8 for more details.

6:00–7:30 p.m. ■ **Indigo AE & Indigo Terrace**

■ **Welcome Reception**

See page 9 for more details.

MONDAY, NOVEMBER 11

8:15–9:45 a.m. ■ **Aqua Salon ABCD**

■ **Protecting U.S. Science from Undue Foreign Influence**

JOINT SESSION WITH THE COUNCILS ON ACADEMIC AFFAIRS, GOVERNMENTAL AFFAIRS, AND STRATEGIC COMMUNICATIONS AND COMMISSION ON INTERNATIONAL INITIATIVES

For over a half century, U.S. world leadership in fundamental science has been based on a strong partnership between the federal government and public research universities. Openness and collaboration have been key to the partnership. Despite periodic revisiting of security policies such as during the Cold War, the U.S. has strived to attract the best scientists and students on the planet to conduct their research here. As U.S. economic and security interests are threatened by foreign interference and attempted influence, how are federal research agencies and public research universities working together to address foreign threats while preserving scientific collaboration?

MODERATOR: **Roger Wakimoto**, *Vice Chancellor for Research, University of California, Los Angeles*

PANELISTS: **Jodi Black**, *Deputy Director, Office of Extramural Research, National Institutes of Health*

Chris Fall, *Director of the Office of Science, U.S. Department of Energy*

Rebecca Keiser, *Head, Office of International Science and Engineering, National Science Foundation*

10:30–11:45 a.m. ■ **Aqua Salon ABCD**

■ **Public Impact Research Report Launch**

JOINT SESSION WITH THE COUNCILS ON GOVERNMENTAL AFFAIRS AND STRATEGIC COMMUNICATIONS AND COMMISSION ON ECONOMIC & COMMUNITY ENGAGEMENT

A new report on public impact research (PIR) intends to stimulate greater and more diverse public engagement in garnering the contributions of university research to the nation. This discussion will highlight examples of grand challenge research and other university engagement as models for how the concept of PIR might be used by the university community. This effort is

the culmination of a year's effort by over 60 university leaders and includes contributions from a team of APLU councils.

MODERATOR: **Sandra Brown**, *Vice Chancellor for Research, University of California, San Diego*

PANELISTS: **Abhijit Afzalpurkar**, *Director, Innovation Partnerships, Thermo Fisher Scientific Inc.*
David Graham, *Chief Innovation Officer, City of Carlsbad, California*
Robin Kaler, *Associate Chancellor for Public Affairs, University of Illinois at Urbana-Champaign*
Gabriel López, *Vice President for Research, University of New Mexico*

Noon-1:15 p.m. ▪ Indigo Ballroom

MONDAY LUNCHEON

■ Understanding Student Debt

See page 9 for more details.

1:30-2:45 p.m. ▪ Sapphire OP

■ Institutional Models for Securing Academic Research (Closed Session)

BY INVITATION ONLY

JOINT SESSION WITH THE COUNCIL ON ACADEMIC AFFAIRS

This will be an interactive session in which attendees will discuss effective policy, practices, and resources for addressing undue foreign influence in academic research. This session is by invitation only.

MODERATOR: **Joseph Glover**, *Provost and Senior Vice President, Academic Affairs, University of Florida*

PANELISTS: **Simon J. Atkinson**, *Vice Chancellor for Research, University of Kansas*
Mary Croughan, *Vice President for Research, University of Nevada, Las Vegas*
Nicholas P. Jones, *Executive Vice President and Provost, The Pennsylvania State University*

3:30-4:45 ▪ Sapphire I

■ CoR Business Meeting

Open to all members of APLU's Council on Research.

CHAIRS: **Sandra Brown**, *Vice Chancellor for Research, University of California, San Diego*
Sarah Nusser, *Vice President for Research, Iowa State University*

6:00-8:00 p.m. ▪ Off-Site

■ CoR Reception

COR MEMBERS ONLY

Join CoR members for a reception hosted by University of California, San Diego Office of Research Affairs.

San Diego Wine & Culinary Center

200 Harbor Drive #120

San Diego, CA 92101

TUESDAY, NOVEMBER 12

CLOSING SESSIONS

8:30-9:15 a.m. ▪ Indigo CDGH

■ The Empowered University

See page 10 for more details.

9:15-9:45 a.m. ▪ Indigo CDGH

■ Higher Education & Immigration Policy

See page 10 for more details.

9:45-10:45 a.m. ▪ Indigo CDGH

■ The 2020 Election: Where Does It Stand?

See page 10 for more details.

COUNCIL ON STRATEGIC COMMUNICATIONS (CSC)

The Council on Strategic Communications (CSC) provides a forum for strengthening the work of senior campus leaders in communications and public affairs, public relations, and marketing. The council works to create coherent messaging and effective strategies around communicating the value of public higher education to key constituencies.

SUNDAY, NOVEMBER 10

Noon-1:15 p.m. ■ Indigo 202 A

■ CSC Executive Committee Luncheon

EXECUTIVE COMMITTEE MEMBERS ONLY

CHAIR: **Dana Topousis**, *Chief Marketing and Communications Officer, University of California, Davis*

1:30-2:30 p.m. ■ Sapphire KL

■ 2020 Elections on The Horizon: The Public University Role Amidst Hyper Political Polarization

JOINT SESSION WITH THE COUNCILS ON GOVERNMENTAL AFFAIRS AND STUDENT AFFAIRS

With the 2020 election heating up, public university campuses find themselves subject to the same corrosive political climate that infects the nation but with a special mission to be better. How can public universities best foster civil discourse, host diverse political perspectives, and limit the damage when it goes awry? Three university leaders, including two who are former members of the U.S. House of Representatives, will discuss how public universities can lean in to their special role even in the most challenging of climates.

MODERATOR: **Mica Stark**, *Associate Vice President for Communications and Public Affairs, University of New Hampshire*

PANELISTS: **Virginia Hardy**, *Vice Chancellor for Student Affairs, East Carolina University*

Mark Kennedy, *President, University of Colorado*

Martin Meehan, *President, University of Massachusetts*

3:15-4:15 p.m.

INSTITUTIONAL STRATEGIES SESSIONS

Choose one of the sessions presented by APLU, see pages 11-12 for descriptions and locations. Recommended for CSC:

- Institutional Strategies for Community Engagement
- Institutional Strategies for Degree Completion
- Institutional Strategies for Global Learning, Research, and Engagement
- Institutional Strategies for Innovation and Economic Prosperity

4:30-6:00 p.m. ■ Indigo BCDFGH

KEYNOTE SESSION

■ In Service

See page 8 for more details.

6:00-7:30 p.m. ■ Indigo AE & Indigo Terrace

■ Welcome Reception

See page 9 for more details.

MONDAY, NOVEMBER 11

8:15-9:45 a.m. ■ Aqua Salon ABCD

■ Protecting U.S. Science from Undue Foreign Influence

JOINT SESSION WITH THE COUNCILS ON ACADEMIC AFFAIRS, GOVERNMENTAL AFFAIRS, AND RESEARCH AND COMMISSION ON INTERNATIONAL INITIATIVES

For over a half century, U.S. world leadership in fundamental science has been based on a strong partnership between the federal government and public research universities. Openness and collaboration have been key to the partnership. Despite periodic revisiting of security policies such as during the Cold War, the U.S. has strived to attract the best scientists and students on the planet to conduct their research here. As U.S. economic and security interests

are threatened by foreign interference and attempted influence, how are federal research agencies and public research universities working together to address foreign threats while preserving scientific collaboration?

MODERATOR: **Roger Wakimoto**, *Vice Chancellor for Research, University of California, Los Angeles*

PANELISTS: **Jodi Black**, *Deputy Director, Office of Extramural Research, National Institutes of Health*

Chris Fall, *Director of the Office of Science, U.S. Department of Energy*

Rebecca Keiser, *Head, Office of International Science and Engineering, National Science Foundation*

10:30–11:45 a.m. ▪ Aqua Salon ABCD

■ Public Impact Research Report Launch

JOINT SESSION WITH THE COUNCILS ON GOVERNMENTAL AFFAIRS AND RESEARCH AND COMMISSION ON ECONOMIC & COMMUNITY ENGAGEMENT

A new report on public impact research (PIR) intends to stimulate greater and more diverse public engagement in garnering the contributions of university research to the nation. This discussion will highlight examples of grand challenge research and other university engagement as models for how the concept of PIR might be used by the university community. This effort is the culmination of a year's effort by over 60 university leaders and includes contributions from a team of APLU councils.

MODERATOR: **Sandra Brown**, *Vice Chancellor for Research, University of California, San Diego*

PANELISTS: **Abhijit Afzalpurkar**, *Director, Innovation Partnerships, Thermo Fisher Scientific Inc.*

David Graham, *Chief Innovation Officer, City of Carlsbad, California*

Robin Kaler, *Associate Chancellor for Public Affairs, University of Illinois at Urbana-Champaign*

Gabriel López, *Vice President for Research, University of New Mexico*

Noon–1:15 p.m. ▪ Indigo Ballroom

MONDAY LUNCHEON

■ Understanding Student Debt

See page 9 for more details.

1:30–2:45 ▪ Sapphire KL

■ \$1.6T Student Debt: Is this a Crisis?

JOINT SESSION WITH THE COUNCIL ON GOVERNMENTAL AFFAIRS AND COMMISSION ON INFORMATION, MEASUREMENT, & ANALYSIS

Public and policymaker perceptions of higher education are significantly shaped by student debt with the overall number drawing a lot of attention. Is this a national crisis though as some increasingly argue? Expert panelists will breakdown the \$1.5T in student debt to identify the parts of the debt that should be of biggest concern and discuss how student debt drives perception and policy including the 2020 presidential campaign.

MODERATOR: **Crystal Martinez**, *Director of Education, University of California*

PANELISTS: **Sandy Baum**, *Nonresident Senior Fellow, Center on Education Data and Policy, Urban Institute and Professor Emerita of Economics, Skidmore College*

Cinnamon Blair, *Chief Marketing and Communications Officer, The University of New Mexico*

Doug Lederman, *Editor and Co-founder, Inside Higher Ed*

3:30–4:45 p.m. ▪ Aqua 300

■ CSC Open Forum

Unfortunately, on college campuses, it's inevitable that issues will arise. While it's impossible to predict exactly what crises might happen in a given academic year, it is critical to plan and prepare for them. Join strategic communications experts in a discussion about approaches to issues management, actual issue responses, and recommendations for managing longer-term situations.

6:30–8:00 p.m. ▪ Off-Site

■ **CSC Off-Site Dinner**

CSC MEMBERS ONLY

Contact Allie Maniglia for more information (amaniglia@aplu.org).

TUESDAY, NOVEMBER 12

CLOSING SESSIONS

8:30–9:15 a.m. ▪ Indigo CDGH

■ **The Empowered University**

See page 10 for more details.

9:15–9:45 a.m. ▪ Indigo CDGH

■ **Higher Education & Immigration Policy**

See page 10 for more details.

9:45–10:45 a.m. ▪ Indigo CDGH

■ **The 2020 Election: Where Does It Stand?**

See page 10 for more details.

COUNCIL ON STUDENT AFFAIRS (CSA)

The Council on Student Affairs (CSA) is composed of the senior student affairs or student life officers at member institutions and university systems. The CSA provides forums for the discussion and dissemination of information on issues related to the college student experience: co-curricular opportunities; personal and professional growth; learning, progress, and completion; mental and physical health and wellness; and/or fundamental needs such as housing, financial aid, transportation, and food. The CSA advocates within APLU and works cooperatively with other councils and commissions to enhance institutional effectiveness and the student experience in these areas.

SUNDAY, NOVEMBER 10

7:00–8:15 a.m. ▪ Indigo AE

■ **CSA Breakfast Meet and Greet**

Look for the reserved tables in the ballroom.

8:15–9:45 a.m. ▪ Sapphire D

■ **Diversifying the Professoriate: Understanding the Issues Institutions Face and What Representation Really Means**

JOINT SESSION WITH THE COUNCILS ON ACADEMIC AFFAIRS AND
RESEARCH AND COMMISSION ON ACCESS, DIVERSITY, & EXCELLENCE

Effectively diversifying the academy has continued to elude many institutional leaders despite significant efforts to support underrepresented candidates. But what does representation look like? Should faculty be representative of student bodies or of the state? How do institutions increase their awareness and understanding of the issues they face around faculty diversification? This session will focus on these topics and on Aspire: The National Alliance for Inclusive & Diverse STEM Faculty. One of the goals of this session is to motivate institutions to consider how they might leverage mutually reinforcing efforts to develop

inclusive practices to support the recruitment, hiring, and retention of inclusive and diverse faculty.

MODERATOR: **Tonya Peeples**, Associate Dean for Equity and Inclusion, College of Engineering and Professor of Chemical Engineering, The Pennsylvania State University

PANELISTS: **Gina Sanchez Gibau**, Associate Vice Chancellor for Faculty Diversity and Inclusion and Associate Professor of Anthropology, IUPUI

Douglas Haynes, Vice Chancellor for Diversity, Equity, and Inclusion; Director, UCI ADVANCE Program; and Professor of History, University of California, Irvine

Beth Ruedi, Director of Operations, SEA Change, American Association for the Advancement of Science

J. Luke Wood, Chief Diversity Officer and Distinguished Professor of Education, San Diego State University

10:30–11:45 a.m. ■ Aqua Salon C

■ Making Long-Term Financial Aid More Inclusive Through Completion Grants

JOINT SESSION WITH THE COMMISSION ON ACCESS, DIVERSITY, & EXCELLENCE, COALITION OF URBAN SERVING UNIVERSITIES, AND POWERED BY PUBLICS

As universities successfully increase access to higher education their evolving student bodies require continued evolution to meet new student needs. Chief among these concerns is increasing the degree completion rates for students with increasingly unmet financial needs. The rise of emergency aid and completion grants have demonstrated the need for institutions to identify and support these students. But, how do institutions successfully implement such programs? How have these interventions evolved over time? And moreover, what evidence is there of the real effect of these programs across multiple institutions? Each of these questions will be addressed by a group of institutions that have worked together to implement, evolve, and evaluate a common completion grant program across 11 broad- and open-access institutions.

MODERATOR: **Elizabeth Bejar**, Senior Vice President for Academic and Student Affairs, Florida International University

PANELISTS:

Edward Conroy, Assistant Director for Community Engagement and Research Application, Hope Center for College, Community, and Justice, College of Education, Temple University

John Gunkel, Vice Chancellor for Academic Programs and Strategic Partnerships, Rutgers University, Newark

Melissa Pizzo, Assistant Vice President, Enrollment Services, Arizona State University

Karen Weddle-West, Vice President for Student Academic Success and Director of Diversity Initiatives, University of Memphis

Noon–1:15 p.m. ■ Indigo 202 B

■ CSA Executive Committee Luncheon

EXECUTIVE COMMITTEE MEMBERS ONLY

CHAIRS: **Regina Hyatt**, Vice President for Student Affairs, Mississippi State University

Danny Pugh, Vice President for Student Affairs, Texas A&M University

1:30–2:30 p.m. ■ Sapphire KL

■ 2020 Elections on The Horizon: The Public University Role Amidst Hyper Political Polarization

JOINT SESSION WITH THE COUNCILS ON GOVERNMENTAL AFFAIRS AND STRATEGIC COMMUNICATIONS

With the 2020 election heating up, public university campuses find themselves subject to the same corrosive political climate that infects the nation but with a special mission to be better. How can public universities best foster civil discourse, host diverse political perspectives, and limit the damage when it goes awry? Three university leaders, including two who are former members of the U.S. House of Representatives, will discuss how public universities can lean in to their special role even in the most challenging of climates.

MODERATOR: **Mica Stark**, Associate Vice President for Communications and Public Affairs, University of New Hampshire

PANELISTS: **Virginia Hardy**, Vice Chancellor for Student Affairs, East Carolina University

Mark Kennedy, President, University of Colorado

Martin Meehan, President, University of Massachusetts

1:30–2:30 p.m. ■ Aqua 311

■ Building Alignment in Cross-Campus Teams to Support Student Success

JOINT SESSION WITH THE COUNCIL OF 1890S UNIVERSITIES
AND COMMISSIONS ON ACCESS, DIVERSITY, & EXCELLENCE AND
INTERNATIONAL ISSUES, AND POWERED BY PUBLICS

From academic departments to administrative offices, the focus of many faculty, staff, and administrators on college campuses is the success of the students they serve. New research shows the benefits of aligning departments across the university to improve student success efforts in a holistic manner. This session will address the various ways cross-campus teams are formed and operate. Highlights of the session include a panel discussing ways in which the offices of the Provost, Student Affairs, Diversity, Institutional Research, and International can effectively lead cross-campus teams and strategies to overcome the traditional silo structure of universities. Attendees will also participate in small group discussions where they will develop action plans for establishing new or improving upon existing cross-campus teams.

PANELISTS: **Gesele Durham**, *Associate Provost, Institutional Effectiveness and Planning, George Mason University*
Lisa Erwin, *Vice Chancellor for Student Life and Dean of Students, University of Minnesota Duluth*
Georgianna Melendez, *Assistant Chancellor for Diversity, Equity, and Inclusion, University of Massachusetts Boston*
Meghna Ramaswamy, *Director, International Research, University of Saskatchewan*

3:15–4:15 p.m.

INSTITUTIONAL STRATEGIES SESSIONS

Choose one of the sessions presented by APLU, see pages 11–12 for descriptions and locations. Recommended for CSA:

■ Institutional Strategies for Degree Completion

4:30–6:00 p.m. ■ Indigo BCDFGH

KEYNOTE SESSION

■ In Service

See page 8 for more details.

6:00–7:30 p.m. ■ Indigo AE & Indigo Terrace

■ Welcome Reception

See page 9 for more details.

MONDAY, NOVEMBER 11

7:00–8:15 a.m. ■ Indigo AE

■ CSA Program Planning Meeting

CSA PROGRAM PLANNING COMMITTEE ONLY
Look for the reserved table in the ballroom.

8:15–9:45 a.m. ■ Sapphire D

■ They Served to Secure our Future; How are We Serving to Secure Theirs?

JOINT SESSION WITH THE COMMISSION ON ACCESS, DIVERSITY,
& EXCELLENCE, AND POWERED BY PUBLICS

Higher education institutions are seeing more veteran and military-connected students as more students take advantage of the Post-9/11 GI Bill financial aid options. While these benefits serve as an effective tool for degree attainment, they do not ensure success for student veterans who may find the world of academia a stark contrast to military life. These unique adult learners come to higher education with opportunities and challenges that differ from traditional college students. In this session, we will explore how institutions can implement

best-practice approaches to promote student veteran success that are crucial for their transition into and success within higher education.

MODERATOR: **Col. Jerry Smith (USMC Ret.),** *Director, Veteran Resource and Support Center, Texas A&M University*

PANELISTS: **Force Master Chief Mamudu “Karim” Cole,** *Naval Education and Training Command*
James Chirido, *Student, Construction Science Major, Texas A&M University*
Crisann Hanes (USMC), *Graduate Advisor, Evening and Online MBA Programs, Colorado State University*
Cody Nicholls, *Assistant Dean of Students, Military and Veteran Engagement, University of Arizona*

10:30–11:45 a.m. ■ Sapphire D

■ **Fostering Increased Student Services through a Student Wellness Model**

JOINT SESSION WITH THE COALITION OF URBAN SERVING UNIVERSITIES AND COMMISSIONS ON ACCESS, DIVERSITY, & EXCELLENCE AND INTERNATIONAL INITIATIVES

College student mental health and well-being is a major source of concern for higher education professionals. Counseling centers report increased requests for services, even as there are disparities at who accesses, uses, and benefits from these resources. Institutions continue to grapple with what wellness means and how a student-centered approach might effectively meet students’ needs while deepening engagement. Wellness is not a class or a pill or yoga pose, but how people think about and experience their lives and how the breadth of those experiences—emotional, academic, financial, social and health—interact and integrate to create or inhibit opportunities for students. A wellness model recognizes institutional attention toward an integrated approach to well-being is an essential shift in approach. Join this session to explore how to better support students today, and better design for the future.

MODERATOR: **Luoluo Hong,** *Associate Vice Chancellor for Student Affairs and Enrollment Management, Chancellor’s Office, The California State University System*

PANELISTS:

David Arnold, *Assistant Vice President for Health, Safety, and Well-Being Initiatives, NASPA*

Amelia Arria, *Professor, Department of Behavioral and Community Health; Director, Center on Young Adult Health and Development; and Director, Office of Planning and Evaluation, University of Maryland of Public Health*

Blanche Hughes, *Vice President, Student Affairs, Colorado State University*

Joanna Regulska, *Vice Provost and Associate Chancellor, Global Affairs, Office of the Chancellor and Provost and Professor of Gender, Sexuality and Women’s Studies, University of California, Davis*

Nancy Wada-McKee, *Vice President Student Life, California State University, Los Angeles*

Noon–1:15 p.m. ■ Indigo Ballroom

MONDAY LUNCHEON

■ **Understanding Student Debt**

See page 9 for more details.

1:30–2:45 p.m. ■ Sapphire D

■ **What’s Zip Codes Got to Do with It? Taking an Asset Approach to Admissions**

JOINT SESSION WITH THE COUNCIL ON ACADEMIC AFFAIRS, COALITION OF URBAN SERVING UNIVERSITIES, COMMISSION ON ACCESS, DIVERSITY, & EXCELLENCE, AND POWERED BY PUBLICS

Universities across the country are faced with increased scrutiny around admissions processes with national headlines abounding on the topic. Nowhere is this issue more important than for public universities given their unique missions of serving their states and the country by providing increased access to high-quality education. But with a growing number of court cases and state policies that ban race as a consideration, how do institutions appropriately increase opportunity to students who may have had limited academic opportunities? This session explores the power and importance of

understanding and accounting for environmental contexts, like neighborhood and high school characteristics, in admission processes. The panel will focus on various evidence-based holistic enrollment strategies that can be employed at scale and at cost to identify diverse student populations who can benefit the most from college degrees.

MODERATOR: **Michael Rao**, *President, Virginia Commonwealth University*

PANELISTS: **Philip Ballinger**, *Associate Vice Provost for Enrollment Management, University of Washington*

Stephen Handel, *Executive Director, Strategic Higher Education Assessment, The College Board*

Kathie Maynard, *Associate Dean for Innovations and Community Partnerships, University of Cincinnati*

3:30–4:45 p.m. ▪ Aqua 310

■ CSA Business Meeting

CHAIRS: **Regina Hyatt**, *Vice President for Student Affairs, Mississippi State University*

Danny Pugh, *Vice President for Student Affairs, Texas A&M University*

7:30–9:30 p.m. ▪ Off-Site

■ CSA Dinner

CSA MEMBERS AND GUESTS ONLY

TUESDAY, NOVEMBER 12

CLOSING SESSIONS

8:30–9:15 a.m. ▪ Indigo CDGH

■ The Empowered University

See page 10 for more details.

9:15–9:45 a.m. ▪ Indigo CDGH

■ Higher Education & Immigration Policy

See page 10 for more details.

9:45–10:45 a.m. ▪ Indigo CDGH

■ The 2020 Election: Where Does It Stand?

See page 10 for more details.

Commissions

APLU's commissions enable individuals from multiple disciplines across the universities to come together to address critical issues and expand their knowledgebase in areas of common interest, regardless of position.

COALITION OF URBAN SERVING UNIVERSITIES (USU)

The Coalition of Urban Serving Universities (USU) is a network of public urban research universities that represents every region of the United States. University presidents created the coalition to leverage the intellectual capital and economic power of urban universities, thereby improving urban life and America's competitiveness in the global economy.

SUNDAY, NOVEMBER 10

8:15–9:45 a.m. ■ Sapphire M

■ Maximizing Our Public Value Proposition: Achieving Institutional Transformation through Strategic Community Engagement

JOINT SESSION WITH THE COMMISSION ON
ECONOMIC & COMMUNITY ENGAGEMENT

Developing bold university-wide community engagement commitments and strategies is invaluable for public research institutions seeking to strengthen their core functional areas and provide public value. These universities recognize that a holistic engagement portfolio has positive cascading effects for the institution: it contributes to key institutional needs such as student success, resource generation, and novel research while concurrently enabling interdisciplinary, cross-sectoral, and cross-functional integration. Within the public sphere, innovative engagements and their constituent partnerships have

the capacity to move the institution beyond rhetorical public benefit into a space of demonstrable and exciting impacts that come from community and university working together on shared, public problem-solving. Universities that have a clear public-value proposition articulate how community engagement animates, strengthens, and differentiates the institution; they position community engagement and partnerships as cross-cutting enablers to all goal areas within the strategic plan. This latter approach uses community engagement to maximize the institution's public value proposition while also strengthening the institution. Participants will leave this workshop with a start on thinking through how to leverage the organization's engagement portfolio to serve the university's strategic goals, thereby generating sustainable support for engagement.

MODERATOR: **Lina Dostilio**, *Associate Vice Chancellor for Community Engagement, University of Pittsburgh Facilitator*

PANELISTS: **Jennifer Frum**, *Vice President for Public Service and Outreach, University of Georgia*

Terri Shelton, *Vice Chancellor for Research and Engagement, University of North Carolina, Greensboro*

David Weerts, *Associate Professor; Faculty Director, Academic Planning and Programs, Office for Public Engagement, University of Minnesota*

10:30–11:45 a.m. ■ Indigo 204 B

■ Coalition of Urban Serving Universities: Urban Design Challenge, Part I

Building off the momentum of USU's summer meeting, urban-serving universities will continue their joint work to develop a grand challenge agenda. Urban universities are a driving force in higher education—the next generation of great universities with central roles in a rapidly urbanizing world. Reflecting the diversity of their cities, urban universities are educating a wider set of learners with varied academic, economic, social and health needs, solving urban challenges in ways that integrate academic, service and research goals, and building new models of inclusion. In this session, urban universities will collaborate around these goals:

1. Reassert the urban frame in USU's work;
2. Integrate experiential learning through deepened connections to the community and demonstrate impacts for students and the city; and
3. Grapple with the challenges of inequitable growth, a societal problem, with direct impacts on the students, families, and communities urban serving institutions serve.

10:30–11:45 a.m. ■ Aqua Salon C

■ Making Long-Term Financial Aid More Inclusive Through Completion Grants

JOINT SESSION WITH THE COUNCIL ON STUDENT AFFAIRS, COMMISSION ON ACCESS, DIVERSITY, & EXCELLENCE, AND POWERED BY PUBLICS

As universities successfully increase access to higher education their evolving student bodies require continued evolution to meet new student needs. Chief among these concerns is increasing the degree completion rates for students with increasingly unmet financial needs. The rise of emergency aid and completion grants have demonstrated the need for institutions to identify and support these students. But, how do institutions successfully implement such programs? How have these interventions evolved over time? And moreover, what evidence is there of the real effect of these programs across multiple institutions? Each of these questions will be addressed by a group of institutions that have worked together to implement, evolve, and evaluate a common completion grant program across 11 broad- and open-access institutions.

MODERATOR: **Elizabeth Bejar**, *Senior Vice President for Academic and Student Affairs, Florida International University*

PANELISTS: **Edward Conroy**, *Assistant Director for Community Engagement and Research Application, Hope Center for College, Community, and Justice, College of Education, Temple University*

John Gunkel, *Vice Chancellor for Academic Programs and Strategic Partnerships, Rutgers University, Newark*

Melissa Pizzo, *Assistant Vice President, Enrollment Services, Arizona State University*

Karen Weddle-West, *Vice President for Student Academic Success and Director of Diversity Initiatives, University of Memphis*

Noon–1:15 p.m. ■ Indigo 204 B

■ Coalition of Urban Serving Universities Business Luncheon

USU MEMBERS ONLY

1:30–2:30 p.m. ■ Indigo 204 B

■ Coalition of Urban Serving Universities: Urban Design Challenge, Part II

Building off the momentum of USU's summer meeting, urban-serving universities will continue their joint work to develop a grand challenge agenda. Urban universities are a driving force in higher education—the next generation of great universities with central roles in a rapidly urbanizing world. Reflecting the diversity of their cities, urban universities are educating a wider set of learners with varied academic, economic, social and health needs, solving urban challenges in ways that integrate academic, service and research goals, and building new models of inclusion. In this session, urban universities will collaborate around these goals:

1. Reassert the urban frame in USU's work;
2. Integrate experiential learning through deepened connections to the community and demonstrate impacts for students and the city
3. Grapple with the challenges of inequitable growth, a societal problem, with direct impacts on the students, families, and communities urban serving institutions serve.

3:15–4:15 p.m.

INSTITUTIONAL STRATEGIES SESSIONS

Choose one of the sessions presented by APLU, see pages 11–12 for descriptions and locations. Recommended for USU:

■ Institutional Strategies for Community Engagement

■ Institutional Strategies for Degree Completion

■ Institutional Strategies for Global Learning, Research, and Engagement

■ Institutional Strategies for Innovation and Economic Prosperity

4:30–6:00 p.m. ■ Indigo BCDFGH

KEYNOTE SESSION

■ In Service

See page 8 for more details.

6:00–7:30 p.m. ■ Indigo AE & Indigo Terrace

■ Welcome Reception

See page 9 for more details.

MONDAY, NOVEMBER 11

8:15–9:45 a.m. ■ Aqua Salon F

■ Why Mindset Matters for Student Success— And What to do About it

JOINT SESSION WITH POWERED BY PUBLICS

Research on learning mindsets—such as belonging, growth mindset, and purpose—is generating excitement among leaders seeking to improve student success. But how is this translating to practice? During this session, you'll hear from leaders at the forefront of campus innovation and redesign. They'll share ways they are exploring and testing changes to support equity in students' experience—whether by campus communications, messages in syllabi, classroom-based interventions, or even the physical environment. Participants will be engaged in a dialogue and gain access to new strategies, tools, and resources to support their own work to create equitable learning environments.

MODERATOR: **Roderick Nairn**, *Provost and Executive Vice Chancellor for Academic and Student Affairs, University of Colorado, Denver*

PANELISTS: **Denise Bartell**, *Associate Vice Provost for Student Success, University of Toledo*
Steve Dandaneau, *Associate Provost and Executive Director of the Reinvention Collaborative, Colorado State University*
Tiffany Mfume, *Assistant Vice-President for Student Success and Retention, Morgan State University*

10:30–11:45 a.m. ■ Sapphire D

■ Fostering Increased Student Services through a Student Wellness Model

JOINT SESSION WITH THE COUNCIL ON STUDENT AFFAIRS, COMMISSIONS
ON ACCESS, DIVERSITY, & EXCELLENCE AND INTERNATIONAL INITIATIVES

College student mental health and well-being is a major source of concern for higher education professionals. Counseling centers report increased requests for services, even as there are disparities at who accesses, uses, and benefits from these resources. Institutions continue to grapple with what wellness means and how a student-centered approach might effectively meet students' needs while deepening engagement. Wellness is not a class or a pill or yoga pose, but how people think about and experience their lives and how the breadth of those experiences—emotional, academic, financial, social and health—interact and integrate to create or inhibit opportunities for students. A wellness model recognizes institutional attention toward an integrated approach to well-being is an essential shift in approach. Join this session to explore how to better support students today, and better design for the future.

MODERATOR: **Luoluo Hong**, *Associate Vice Chancellor for Student Affairs and Enrollment Management, Chancellor's Office, The California State University System*

PANELISTS: **David Arnold**, *Assistant Vice President for Health, Safety, and Well-Being Initiatives, NASPA*

Amelia Arria, *Professor, Department of Behavioral and Community Health; Director, Center on Young Adult Health and Development; and Director, Office of Planning and Evaluation, University of Maryland of Public Health*

Blanche Hughes, *Vice President, Student Affairs, Colorado State University*

Joanna Regulska, *Vice Provost and Associate Chancellor, Global Affairs, Office of the Chancellor and Provost and Professor of Gender, Sexuality and Women's Studies, University of California, Davis*

10:30–11:45 a.m. ■ Sapphire KL

■ The Impact of Belonging on Student Success

JOINT SESSION WITH THE COMMISSIONS ON ACCESS, DIVERSITY,
& EXCELLENCE AND INTERNATIONAL INITIATIVES

This session will address belonging from the perspective of international students and first generation, minority, and underserved student populations. In many ways fluency in the language of higher education systems and processes, similarly to spoken language, is fundamental to attaining a sense of belonging and navigating postsecondary experiences. During the session we will identify the factors that may support a students' fluency, highlighting the role of administrative structures and the importance of including senior international officers and chief diversity officers in identifying areas for change. Finally, we will focus on the role faculty play in fostering a sense of belonging for students, highlighting the work of our APLU institutions.

PANELISTS: **Taffye Benson Clayton**, *Associate Provost and Vice President for Inclusion and Diversity, Auburn University*
Cathy Buyarski, *Executive Director, Student Success Initiatives Associate Dean, Student Affairs, IUPUI*
Ahmad Ezzeddine, *Vice President for Educational Outreach and International Programs, Wayne State University*

Noon–1:15 p.m. ■ Indigo Ballroom

MONDAY LUNCHEON

■ Understanding Student Debt

See page 9 for more details.

1:30–2:45 p.m. ■ Sapphire E

■ Enhancing Student Employment Outcomes through Degree-Certification Pathways

JOINT SESSION WITH THE COMMISSION ON
ECONOMIC & COMMUNITY ENGAGEMENT

With support from the Lumina Foundation, APLU/USU, Workcred, and the University Professional and Continuing Education Association (UPCEA) have joined forces to explore how universities can embed, align, and integrate independent certifications with four-year degree programs to bolster student success and employability outcomes. In this session, hear from university and certification body leaders who have worked together to successfully implement these unique partnerships— what challenges did they face? How were they overcome? How can your institution replicate this success? Join us and learn more about this initiative and how your institution can benefit from lessons learned.

INTRODUCTION: **Gretchen Syverud**, *Director of Strategy Integration, Lumina Foundation*

SPEAKERS: **Shalin Jyotishi**, *Assistant Director, Economic Development and Community Engagement, APLU*
Andrea Rodriguez, *Assistant Director, Office of Urban Affairs, APLU*

MODERATOR: **Karen Elzey**, *Associate Executive Director, Workcred*

PANELISTS: **Latha Ramchand**, *Provost, University of Missouri*
Mary Kay Svedberg, *Director of Education, Certified Financial Planning Board*

1:30–2:45 p.m. ■ Sapphire D

■ What's Zip Codes Got to Do with It? Taking an Asset Approach to Admissions

JOINT SESSION WITH THE COUNCILS ON ACADEMIC AFFAIRS
AND STUDENT AFFAIRS, COMMISSION ON ACCESS, DIVERSITY,
& EXCELLENCE, AND POWERED BY PUBLICS

Universities across the country are faced with increased scrutiny around admissions processes with national headlines abounding on the topic. Nowhere is this issue more important than for public universities given their unique missions of serving their states and the country by providing increased access to high-quality education. But with a growing number of court cases and state policies

that ban race as a consideration, how do institutions appropriately increase opportunity to students who may have had limited academic opportunities? This session explores the power and importance of understanding and accounting for environmental contexts, like neighborhood and high school characteristics, in admission processes. The panel will focus on various evidence-based holistic enrollment strategies that can be employed at scale and at cost to identify diverse student populations who can benefit the most from college degrees.

MODERATOR: **Michael Rao**, *President, Virginia Commonwealth University*

PANELISTS: **Philip Ballinger**, *Associate Vice Provost for Enrollment Management, University of Washington*

Stephen Handel, *Executive Director, Strategic Higher Education Assessment, The College Board*

Kathie Maynard, *Associate Dean for Innovations and Community Partnerships, University of Cincinnati*

3:30–4:45 p.m. ■ Indigo 204

■ Engaging Deep Partnerships to Transform Healthy Communities

JOINT SESSION WITH THE CFERR-BAA COOPERATIVE EXTENSION SECTION/EXTENSION COMMITTEE ON ORGANIZATION & POLICY

Learn strategies for effectively engaging and galvanizing campus and rural/urban communities to build deep partnerships to transform healthy communities. Session participants will engage in interactive session where participants design and workshop strategies for building partnerships to address health issues.

PANELISTS: **Michelle Rodgers**, *Associate Dean and Director of Cooperative Extension, University of Delaware*

Barbara Smith, *Vice President Health Policy and Innovation, Virginia Commonwealth University*

5:00–7:30 p.m. ■ Sapphire M

■ CECE-USU Future of Work Networking Reception

JOINT SESSION WITH THE COMMISSION ON ECONOMIC & COMMUNITY ENGAGEMENT

The focus of the reception is on preparing students for the Future of Work. Before the evening begins, participate in a brief activity around how APLU/USU can help members better prepare students for jobs, careers, and a lifetime. Please join us at 5 p.m. sharp to partake fully in the activity.

INTRODUCTION: **Gretchen Syverud**, *Director of Strategy Integration, Lumina Foundation*

FACILITATORS: **Shalin Jyotishi**, *Assistant Director, Economic Development and Community Engagement, APLU*

Andrea Rodriguez, *Assistant Director, Office of Urban Initiatives, APLU*

TUESDAY, NOVEMBER 12

CLOSING SESSIONS

8:30–9:15 a.m. ■ Indigo CDGH

■ The Empowered University

See page 10 for more details.

9:15–9:45 a.m. ■ Indigo CDGH

■ Higher Education & Immigration Policy

See page 10 for more details.

9:45–10:45 a.m. ■ Indigo CDGH

■ The 2020 Election: Where Does It Stand?

See page 10 for more details.

COMMISSION ON ACCESS, DIVERSITY, & EXCELLENCE (CADE)

The primary focus of the Commission on Access, Diversity, and Excellence (CADE) is to develop a comprehensive agenda regarding the relationships between public higher education and the issues of human resources and social change. The commission focuses on such major issues as the broadening of access and opportunity; utilizing the diversity of the undergraduate experience to prepare graduates for the 21st century; enhancing diversity within student and faculty populations; and creating partnerships between universities and local and world communities to bring about beneficial social change.

SUNDAY, NOVEMBER 10

8:15–9:45 a.m. ■ Sapphire D

■ Diversifying the Professoriate: Understanding the Issues Institutions Face and What Representation Really Means

JOINT SESSION WITH THE COUNCILS ON ACADEMIC AFFAIRS, RESEARCH, AND STUDENT AFFAIRS

Effectively diversifying the academy has continued to elude many institutional leaders despite significant efforts to support underrepresented candidates. But what does representation look like? Should faculty be representative of student bodies or of the state? How do institutions increase their awareness and understanding of the issues they face around faculty diversification? This session will focus on these topics and on Aspire: The National Alliance for Inclusive & Diverse STEM Faculty. One of the goals of this session is to motivate institutions to consider how they

might leverage mutually reinforcing efforts to develop inclusive practices to support the recruitment, hiring, and retention of inclusive and diverse faculty.

MODERATOR: **Tonya Peeples**, Associate Dean for Equity and Inclusion, College of Engineering and Professor of Chemical Engineering, The Pennsylvania State University

PANELISTS: **Gina Sanchez Gibau**, Associate Vice Chancellor for Faculty Diversity and Inclusion and Associate Professor of Anthropology, IUPUI

Douglas Haynes, Vice Chancellor for Diversity, Equity, and Inclusion; Director, UCI ADVANCE Program; and Professor of History, University of California, Irvine

Beth Ruedi, Director of Operations, SEA Change, American Association for the Advancement of Science

J. Luke Wood, Chief Diversity Officer and Distinguished Professor of Education, San Diego State University

10:30–11:45 a.m. ■ Aqua Salon C

■ Making Long-Term Financial Aid More Inclusive Through Completion Grants

JOINT SESSION WITH THE COUNCIL ON STUDENT AFFAIRS, COALITION OF URBAN SERVING UNIVERSITIES, AND POWERED BY PUBLICS

As universities successfully increase access to higher education their evolving student bodies require continued evolution to meet new student needs. Chief among these concerns is increasing the degree completion rates for students with increasingly unmet financial needs. The rise of emergency aid and completion grants have demonstrated the need for institutions to identify and support these students. But, how do institutions successfully implement such programs? How have these interventions evolved over time? And moreover, what evidence is there of the real effect of these programs across multiple institutions? Each of these questions will be addressed by a group of institutions that have

worked together to implement, evolve, and evaluate a common completion grant program across 11 broad- and open-access institutions.

MODERATOR: **Elizabeth Bejar**, *Senior Vice President for Academic and Student Affairs, Florida International University*

PANELISTS: **Edward Conroy**, *Assistant Director for Community Engagement and Research Application, Hope Center for College, Community, and Justice, College of Education, Temple University*

John Gunkel, *Vice Chancellor for Academic Programs and Strategic Partnerships, Rutgers University, Newark*

Melissa Pizzo, *Assistant Vice President, Enrollment Services, Arizona State University*

Karen Weddle-West, *Vice President for Student Academic Success and Director of Diversity Initiatives, University of Memphis*

Noon-1:15 p.m. ■ Sapphire Greenroom

■ CADE Executive Committee Luncheon

EXECUTIVE COMMITTEE MEMBERS ONLY

CADE members will take part in this strategic planning session that will guide and serve the diversity and inclusion efforts for the higher education community.

1:30-2:30 p.m. ■ Aqua 311

■ Building Alignment in Cross-Campus Teams to Support Student Success

JOINT SESSION WITH THE COUNCILS ON 1890s UNIVERSITIES AND STUDENT AFFAIRS, COMMISSION ON INTERNATIONAL ISSUES, AND POWERED BY PUBLICS

From academic departments to administrative offices, the focus of many faculty, staff, and administrators on college campuses is the success of the students they serve. New research shows the benefits of aligning departments across the university to improve student success efforts in a holistic manner. This session will address the various ways cross-campus teams are formed and operate. Highlights of the session include a panel discussing ways in which the offices of

the Provost, Student Affairs, Diversity, Institutional Research, and International can effectively lead cross-campus teams and strategies to overcome the traditional silo structure of universities. Attendees will also participate in small group discussions where they will develop action plans for establishing new or improving upon existing cross-campus teams.

PANELISTS: **Gesele Durham**, *Associate Provost, Institutional Effectiveness and Planning, George Mason University*

Lisa Erwin, *Vice Chancellor for Student Life and Dean of Students, University of Minnesota Duluth*

Georgianna Melendez, *Assistant Chancellor for Diversity, Equity, and Inclusion, University of Massachusetts Boston*

Meghna Ramaswamy, *Director, International Research, University of Saskatchewan*

3:15-4:15 p.m.

INSTITUTIONAL STRATEGIES SESSIONS

Choose one of the sessions presented by APLU, see pages 11-12 for descriptions and locations. Recommended for CADE:

■ Institutional Strategies for Community Engagement

■ Institutional Strategies for Degree Completion

4:30-6:00 p.m. ■ Indigo BCDFGH

KEYNOTE SESSION

■ In Service

See page 8 for more details.

6:00-7:30 p.m. ■ Indigo AE & Indigo Terrace

■ Welcome Reception

See page 9 for more details.

MONDAY, NOVEMBER 11

8:15–9:45 a.m. ■ Sapphire D

■ They Served to Secure our Future; How are We Serving to Secure Theirs?

JOINT SESSION WITH THE COUNCIL ON STUDENT AFFAIRS
AND POWERED BY PUBLICS

Higher education institutions are seeing more veteran and military-connected students as more students take advantage of the Post-9/11 GI Bill financial aid options. While these benefits serve as an effective tool for degree attainment, they do not ensure success for student veterans who may find the world of academia a stark contrast to military life. These unique adult learners come to higher education with opportunities and challenges that differ from traditional college students. In this session, we will explore how institutions can implement best-practice approaches to promote student veteran success that are crucial for their transition into and success within higher education.

MODERATOR: **Col. Jerry Smith (USMC Ret.),** *Director, Veteran Resource and Support Center, Texas A&M University*

PANELISTS: **Force Master Chief Mamudu “Karim” Cole,** *Naval Education and Training Command*
James Chirdo, *Student, Construction Science Major, Texas A&M University*
Crisann Hanes (USMC), *Graduate Advisor, Evening and Online MBA Programs, Colorado State University*
Cody Nicholls, *Assistant Dean of Students, Military and Veteran Engagement, University of Arizona*

8:15–9:45 a.m. ■ Indigo 202

■ Measuring and Evaluating Equity at Public Institutions

JOINT SESSION WITH THE COMMISSION ON
INFORMATION, MEASUREMENT, & ANALYSIS

What do institutions do when they find inequity at their institutions? Many institutions collect and analyze data on equity, but are the data used effectively? This session reviews some of the common metrics on equity developed by institutional researchers and how diversity officers use data to address equity issues. The selected panelists will discuss challenges with collecting and analyzing quality data, explore what data are needed to better address equity issues, and how various campus constituents can work together to use data more effectively to address equity issues on campus.

MODERATOR: **Denise Pearson,** *Vice President of Academic Affairs and Equity Initiatives, Association of State Higher Education Executive Officers (SHEEO)*

PANELISTS: **Jason Simon,** *Assistant Vice President, Data Analytics, and Institutional Research, University of North Texas*
Mary Ann Villarreal, *Vice President for Equity, Diversity, and Inclusion, University of Utah*

10:30–11:45 a.m. ■ Sapphire D

■ Fostering Increased Student Services through a Student Wellness Model

JOINT SESSION WITH THE COUNCIL ON STUDENT AFFAIRS
COMMISSION ON INTERNATIONAL INITIATIVES AND
COALITION OF URBAN SERVING UNIVERSITIES

College student mental health and well-being is a major source of concern for higher education professionals. Counseling centers report increased requests for services, even as there are disparities at who accesses, uses, and benefits from these resources. Institutions continue to grapple with what wellness means and how a student-centered approach might effectively meet students’ needs while deepening engagement. Wellness is not a class or a pill or yoga pose, but how people think about and experience their lives and how the breadth of

those experiences—emotional, academic, financial, social and health—interact and integrate to create or inhibit opportunities for students. A wellness model recognizes institutional attention toward an integrated approach to well-being is an essential shift in approach. Join this session to explore how to better support students today, and better design for the future.

MODERATOR: **Luoluo Hong**, *Associate Vice Chancellor for Student Affairs and Enrollment Management, Chancellor's Office, The California State University System*

PANELISTS: **David Arnold**, *Assistant Vice President for Health, Safety, and Well-Being Initiatives, NASPA*
Amelia Arria, *Professor, Department of Behavioral and Community Health; Director, Center on Young Adult Health and Development; and Director, Office of Planning and Evaluation, University of Maryland of Public Health*
Blanche Hughes, *Vice President, Student Affairs, Colorado State University*
Joanna Regulska, *Vice Provost and Associate Chancellor, Global Affairs, Office of the Chancellor and Provost and Professor of Gender, Sexuality and Women's Studies, University of California, Davis*

10:30–11:45 a.m. ■ Sapphire KL

■ The Impact of Belonging on Student Success

JOINT SESSION WITH THE COALITION OF URBAN SERVING UNIVERSITIES AND COMMISSION ON INTERNATIONAL INITIATIVES

This session will address belonging from the perspective of international students and first generation, minority, and underserved student populations. In many ways fluency in the language of higher education systems and processes, similarly to spoken language, is fundamental to attaining a sense of belonging and navigating postsecondary experiences. During the session we will identify

the factors that may support a students' fluency, highlighting the role of administrative structures and the importance of including senior international officers and chief diversity officers in identifying areas for change. Finally, we will focus on the role faculty play in fostering a sense of belonging for students, highlighting the work of our APLU institutions.

PANELISTS: **Taffye Benson Clayton**, *Associate Provost and Vice President for Inclusion and Diversity, Auburn University*
Cathy Buyarski, *Executive Director, Student Success Initiatives Associate Dean, Student Affairs, IUPUI*
Ahmad Ezzeddine, *Vice President for Educational Outreach and International Programs, Wayne State University*

Noon–1:15 p.m. ■ Indigo Ballroom

MONDAY LUNCHEON

■ Understanding Student Debt

See page 9 for more details.

1:30–2:45 p.m. ■ Sapphire D

■ What's Zip Codes Got to Do with It? Taking an Asset Approach to Admissions

JOINT SESSION WITH THE COUNCILS ON ACADEMIC AFFAIRS AND STUDENT AFFAIRS, COALITION OF URBAN SERVING UNIVERSITIES, AND POWERED BY PUBLICS

Universities across the country are faced with increased scrutiny around admissions processes with national headlines abounding on the topic. Nowhere is this issue more important than for public universities given their unique missions of serving their states and the country by providing increased access to high-quality education. But with a growing number of court cases and state policies that ban race as a consideration, how do institutions appropriately increase

opportunity to students who may have had limited academic opportunities? This session explores the power and importance of understanding and accounting for environmental contexts, like neighborhood and high school characteristics, in admission processes. The panel will focus on various evidence-based holistic enrollment strategies that can be employed at scale and at cost to identify diverse student populations who can benefit the most from college degrees.

MODERATOR: **Michael Rao**, *President, Virginia Commonwealth University*

PANELISTS: **Philip Ballinger**, *Associate Vice Provost for Enrollment Management, University of Washington*

Stephen Handel, *Executive Director, Strategic Higher Education Assessment, The College Board*

Kathie Maynard, *Associate Dean for Innovations and Community Partnerships, University of Cincinnati*

1:30–2:45 p.m. ▪ Aqua 311B

■ Applying DEI Principles on Campuses and in Communities

JOINT SESSION WITH THE COUNCIL OF 1890 UNIVERSITIES
AND CFERR-BAA COOPERATIVE EXTENSION SECTION/
EXTENSION COMMITTEE ON ORGANIZATION & POLICY

Learn the principles of diversity, equity, and inclusion in academic programs and university engagement. Two case studies will be presented. The first includes a university that has had success in including diversity in undergraduate and graduate engineering programs and the second will feature Cooperative Extension's community engagement program on coming together for racial understanding where these principles have and/or might be better engaged.

PANELISTS: **Fred Bonner**, *Endowed Chair, College of Education, Prairie View A&M University*

Rachel Welborn, *Associate Director, Mississippi State University/Southern Rural Development Center*

TUESDAY, NOVEMBER 12

CLOSING SESSIONS

8:30–9:15 a.m. ▪ Indigo CDGH

■ The Empowered University

See page 10 for more details.

9:15–9:45 a.m. ▪ Indigo CDGH

■ Higher Education & Immigration Policy

See page 10 for more details.

9:45–10:45 a.m. ▪ Indigo CDGH

■ The 2020 Election: Where Does It Stand?

See page 10 for more details.

COMMISSION ON ECONOMIC & COMMUNITY ENGAGEMENT (CECE)

The Commission on Economic and Community Engagement (CECE) convenes senior university economic development and community engagement administrators as well as presidents and chancellors, provosts, senior research officers, Cooperative Extension leaders, communications and government affairs administrators, and others across APLU member universities and university systems with responsibility for planning, executing, or communicating their institution's work in economic development and public engagement. CECE focuses on three key areas of work:

- Talent and workforce development;
- Innovation, entrepreneurship, and tech-based economic development; and
- Place development through public service, outreach, extension, and engagement.

SUNDAY, NOVEMBER 10

8:15–9:45 a.m. ■ Sapphire M

■ Maximizing Our Public Value Proposition: Achieving Institutional Transformation through Strategic Community Engagement

JOINT SESSION WITH THE COALITION OF URBAN SERVING UNIVERSITIES

Developing bold university-wide community engagement commitments and strategies is invaluable for public research institutions seeking to strengthen their core functional areas and provide public value. These universities recognize that a holistic engagement portfolio has positive cascading effects for the institution: it contributes to key institutional needs such as student success, resource generation, and novel research while concurrently enabling interdisciplinary, cross-sectoral, and cross-functional integration. Within the public sphere, innovative engagements and their constituent partnerships have

the capacity to move the institution beyond rhetorical public benefit into a space of demonstrable and exciting impacts that come from community and university working together on shared, public problem-solving. Universities that have a clear public-value proposition articulate how community engagement animates, strengthens, and differentiates the institution; they position community engagement and partnerships as cross-cutting enablers to all goal areas within the strategic plan. This latter approach uses community engagement to maximize the institution's public value proposition while also strengthening the institution. Participants will leave this workshop with a start on thinking through how to leverage the organization's engagement portfolio to serve the university's strategic goals, thereby generating sustainable support for engagement.

MODERATOR: **Lina Dostilio**, *Associate Vice Chancellor for Community Engagement, University of Pittsburgh Facilitator*

PANELISTS: **Jennifer Frum**, *Vice President for Public Service and Outreach, University of Georgia*

Terri Shelton, *Vice Chancellor for Research and Engagement, University of North Carolina, Greensboro*

David Weerts, *Associate Professor; Faculty Director, Academic Planning and Programs, Office for Public Engagement, University of Minnesota*

10:30–11:45 a.m. ■ Sapphire M

■ The Role of Universities in Catalyzing Manufacturing Innovation and Competitiveness

JOINT SESSION WITH THE COUNCILS ON
GOVERNMENTAL AFFAIRS AND RESEARCH

The manufacturing sector makes an invaluable contribution to the economic well-being of the United States and North America at large. With the advent of advanced manufacturing and increased competition for manufacturing jobs and firms from overseas, universities stand uniquely positioned to strengthen the advanced manufacturing workforce and innovation pipeline in partnership with federal and industry partners. APLU's Commission on Economic and Community Engagement (CECE) will soon embark on a new initiative to better understand and promote the role universities in catalyzing manufacturing competitiveness.

MODERATOR: **Patrick D. Gallagher**, *Chancellor, University of Pittsburgh*

PANELISTS: **Mridul Gautam**, *Vice President for Research and Innovation, University of Nevada, Reno*

Matt O’Keefe, *Executive Director, Center for Manufacturing Excellence, University of Mississippi*

Phil Weilerstein, *President, VentureWell*

Noon–1:15 p.m. ■ Aqua 300A

■ CECE Executive Committee Luncheon

EXECUTIVE COMMITTEE MEMBERS ONLY

1:30–2:30 p.m. ■ Sapphire GH

■ Promotion and Tenure for Public Engagement and Societal Benefit

JOINT SESSION WITH THE COUNCILS ON ACADEMIC AFFAIRS AND RESEARCH AND COMMISSION ON INTERNATIONAL ISSUES

As universities engage multiple publics more extensively, there are signs of potential change to traditional guidelines for faculty promotion and advancement. What are the current opportunities and challenges to incorporating credit for interdisciplinary research collaboration, more widespread engagement of stakeholders from sectors outside of one’s academic institution, and translating fundamental discoveries and scientific expertise to greater societal use?

MODERATOR: **Karen Hanson**, *Senior Vice President for Academic Affairs and Provost, University of Minnesota*

PANELISTS: **Roger Brindley**, *USF System Vice President, USF World, University of South Florida*

David Conover, *Vice President for Research and Innovation, University of Oregon*

Duane Nellis, *President, Ohio University*

1:30–2:30 p.m. ■ Aqua Salon DE

■ Smart and Connected Rural Communities

JOINT SESSION WITH THE COMMISSION ON FOOD, ENVIRONMENT, AND RENEWABLE RESOURCES BOARDS ON AGRICULTURE ASSEMBLY, HUMAN SCIENCES, AND VETERINARY MEDICINE

The viability of rural communities depends on continued competitiveness and resilience of its traditional industries, such as agriculture and manufacturing, the continued provision of important health care services, and the development of innovative new businesses. Universities are building partnerships between their research and extension programs and with state and local governments and economic development organizations to help communities acquire broadband service and develop the applications that matter most to the vitality of rural areas. This session will highlight several efforts that demonstrate the benefits of university engagement in these areas and why it is vital to form partnerships that connect the key strategic elements of smart and connected rural regions.

MODERATOR: **Ashley Stokes**, *Assistant Vice President for Engagement and Deputy Director of Extension, Colorado State University*

PANELISTS: **Brian Whitacre**, *Sarkeys Distinguished Professor, Agricultural Economics, Oklahoma State University*

James Barnes, *Associate Extension Professor, Agricultural Economics, Mississippi State University*

Joe Luck, *Associate Professor, Department of Biological Systems Engineering, University of Nebraska Lincoln*

3:15–4:15 p.m.

INSTITUTIONAL STRATEGIES SESSIONS

Choose one of the sessions presented by APLU, see pages 11–12 for descriptions and locations. Recommended for CECE:

- Institutional Strategies for Community Engagement**
- Institutional Strategies for Innovation and Economic Prosperity**

4:30–6:00 p.m. ■ Indigo BCDFGH

KEYNOTE SESSION

■ In Service

See page 8 for more details.

6:00–7:30 p.m. ■ Indigo AE & Indigo Terrace

■ Welcome Reception

See page 9 for more details.

MONDAY, NOVEMBER 11

7:00–8:00 a.m. ■ Indigo AE

■ Innovation & Economic Prosperity (IEP) Universities Workshop Planning Breakfast

APLU's IEP University designation helps institutions better know, measure, and tell their economic engagement impact through a rigorous self-study process, capacity building and evaluation, and through on-campus and off-campus stakeholder engagement. The designation recognizes institutions with a demonstrated, sustainable, and institution-wide commitment to economic development impact. Sixty-five institutions across North America have earned this distinction. An additional 20+ institutions are currently pursuing the designation, sharing and learning with each other, national experts, and APLU staff through a national collaborative. Currently in the IEP pipeline? Join us over breakfast to contribute your ideas for an upcoming IEP workshop being hosted by Wichita State University. Learn more about the program at www.APLU.org/IEP.

FACILITATOR: **Tonya Witherspoon**, *Associate Vice President, Industry Engagement and Applied Learning, Wichita State University*

8:15–9:45 a.m. ■ Sapphire E

■ CECE Member Meeting: Maximizing the Economic and Societal Impact of Public Universities

Your participation with APLU and its Commission on Economic and Community Engagement (CECE) goes far beyond the APLU Annual Meeting and the CECE Summer Meeting. Whether you're a long-time member of our community

or completely new, join us, meet the team and CECE leadership, and explore existing and forthcoming ways to engage in the work of the Commission and APLU's Office of Economic and Community Engagement. Learn about opportunities to contribute your ideas, assume leadership roles, and make help CECE maximize the impact of public universities on the economy and society in the areas of talent and workforce development, innovation and entrepreneurship, and community engagement.

PANELISTS: **Jorge Atilas**, *Associate Dean, Extension, Global Engagement & Continuing Education, Oklahoma State University*

Dominique Halaby, *Director of the Business Innovation Group, Georgia Southern University*

Paul Roben, *Associate Vice Chancellor for Innovation and Commercialization, University of California-San Diego*

10:30–11:45 a.m. ■ Sapphire E

■ Workshop: Ready for Jobs, Careers, and a Lifetime

JOINT SESSION WITH THE COUNCIL ON ACADEMIC AFFAIRS

In 2017, APLU released a report, *Ready for Jobs, Careers, and a Lifetime*, that called on public universities to produce students that have benefited from, both, a broad-based liberal arts education and pragmatic workforce training and learning opportunities necessary to thrive in the 21st century globally competitive workplace. Partnerships between universities, government, employers, and other stakeholders are of paramount importance if higher education is to meet the demands of student preparedness. In this session, we'll explore the role of universities in workforce development with a special focus on the role of the academic enterprise in preparing students for careers with partners from key sectors.

FACILITATORS: **Debbie Hughes**, *Senior Advisor, Walmart Foundation*
Amanda Winters, *Program Director Economic Opportunity Division, National Governors Association*

David Wu, *Provost and Executive Vice President, George Mason University*

10:30–11:45 a.m. ■ Aqua Salon ABCD

■ Public Impact Research Report Launch

JOINT SESSION WITH THE COUNCILS ON GOVERNMENTAL AFFAIRS,
RESEARCH, AND STRATEGIC COMMUNICATIONS

A new report on public impact research (PIR) intends to stimulate greater and more diverse public engagement in garnering the contributions of university research to the nation. This discussion will highlight examples of grand challenge research and other university engagement as models for how the concept of PIR might be used by the university community. This effort is the culmination of a year's effort by over 60 university leaders and includes contributions from a team of APLU councils.

MODERATOR: **Sandra Brown**, *Vice Chancellor for Research, University of California, San Diego*

PANELISTS: **Abhijit Afzalpurkar**, *Director, Innovation Partnerships, Thermo Fisher Scientific Inc.*

David Graham, *Chief Innovation Officer, City of Carlsbad, California*

Robin Kaler, *Associate Chancellor for Public Affairs, University of Illinois at Urbana-Champaign*

Gabriel López, *Vice President for Research, University of New Mexico*

Noon–1:15 p.m. ■ Indigo Ballroom

MONDAY LUNCHEON

■ Understanding Student Debt

See page 9 for more details.

1:30–2:45 p.m. ■ Sapphire E

■ Enhancing Student Employment Outcomes through Degree-Certification Pathways

JOINT SESSION WITH THE COALITION OF URBAN SERVING UNIVERSITIES

With support from the Lumina Foundation, APLU/USU, Workcred, and the University Professional and Continuing Education Association (UPCEA) have joined forces to explore how universities can embed, align, and integrate

independent certifications with four-year degree programs to bolster student success and employability outcomes. In this session, hear from university and certification body leaders who have worked together to successfully implement these unique partnerships—what challenges did they face? How were they overcome? How can your institution replicate this success? Join us and learn more about this initiative and how your institution can benefit from lessons learned.”

INTRODUCTION: **Gretchen Syverud**, *Director of Strategy Integration, Lumina Foundation*

SPEAKERS: **Shalin Jyotishi**, *Assistant Director, Economic Development and Community Engagement, APLU*

Andrea Rodriguez, *Assistant Director, Office of Urban Affairs, APLU*

MODERATOR: **Karen Elzey**, *Associate Executive Director, Workcred*

PANELISTS: **Latha Ramchand**, *Provost, University of Missouri*

Mary Kay Svedberg, *Director of Education, Certified Financial Planning Board*

3:30–4:45 p.m. ■ Sapphire E

■ Serving Rural Students: Addressing Barriers to Access, Affordability, and Success

JOINT SESSION WITH BOARDS ON AGRICULTURE ASSEMBLY, HUMAN SCIENCES, AND VETERINARY MEDICINE AND POWERED BY PUBLICS

Nearly 20 percent of the U.S. population lives in rural areas. Greater postsecondary success for rural students can lead to more rewarding careers for these students and more vibrant rural communities. Higher education leaders are increasingly being asked how they might improve rural students' access to and success in higher education. This session will provide a framing of this issue and offer some examples of institutional initiatives to improve rural students' higher education access and success.

PANELISTS: **Maria Luna-Torres**, *Project Director, Rural Student Success Initiative, Texas A&M AgriLife Extension*

Catherine Manly, *Ph.D. Student, University of Massachusetts*

Sharon Paynter, *Assistant Vice Chancellor for Community Engagement and Research, East Carolina University*

Allen J. Smart, *Founder, PhilanthropywoRx*

5:00–7:30 p.m. ■ Sapphire M

■ CECE-USU Future of Work Networking Reception

JOINT SESSION WITH THE COALITION OF URBAN SERVING UNIVERSITIES

The focus of the reception is on preparing students for the Future of Work. Before the evening begins, participate in a brief activity around how APLU/USU can help members better prepare students for jobs, careers, and a lifetime. Please join us at 5 p.m. sharp to partake fully in the activity.

INTRODUCTION: **Gretchen Syverud**, *Director of Strategy Integration, Lumina Foundation*

FACILITATORS: **Shalin Jyotishi**, *Assistant Director, Economic Development and Community Engagement, APLU*
Andrea Rodriguez, *Assistant Director, Office of Urban Initiatives, APLU*

TUESDAY, NOVEMBER 12

CLOSING SESSIONS

8:30–9:15 a.m. ■ Indigo CDGH

■ The Empowered University

See page 10 for more details.

9:15–9:45 a.m. ■ Indigo CDGH

■ Higher Education & Immigration Policy

See page 10 for more details.

9:45–10:45 a.m. ■ Indigo CDGH

■ The 2020 Election: Where Does It Stand?

See page 10 for more details.

COMMISSION ON FOOD, ENVIRONMENT, & RENEWABLE RESOURCES (CFERR)

The Commission on Food, Environment, and Renewable Resources focuses on broad cross-cutting issues related to agriculture, food, fiber, human sciences, natural resources (ecology, fish and wildlife, forestry, mineral resources and water resources), oceans, atmosphere, climate and veterinary medicine in the functional areas of research, engagement and teaching. The commission seeks to formulate and implement an integrated federal-relations program and formulate federal budget recommendations in these high-priority areas of national and international concern, as well as to forge partnerships with government agencies whose mission areas are congruent with the commission's activities.

SUNDAY, NOVEMBER 10

8:15–9:45 a.m. ■ Aqua Salon DE

■ A Community of Scholars Celebrating Excellence

JOINT SESSION WITH THE BOARDS ON AGRICULTURE ASSEMBLY, HUMAN SCIENCES, AND VETERINARY MEDICINE

The U.S. Department of Agriculture's National Institute of Food and Agriculture and the APLU Board on Agriculture Assembly will present the following awards and recognition:

- Food and Agricultural Sciences Excellence in College and University Teaching Awards,
- Cooperative Extension Awards of Excellence and Diversity Award,
- Experiment Station Section Award for Excellence in Multistate Research, and
- Food Systems Leadership Institute

MODERATOR: **Orlando McMeans**, *Chancellor-Dean, Southern University Agricultural Research and Extension Center and College of Agricultural, Family, and Consumer Sciences, Southern University*

10:30–11:45 a.m. ■ Aqua Salon DE

■ William Henry Hatch Memorial Lecture

JOINT SESSION WITH THE BOARDS ON AGRICULTURE ASSEMBLY,
HUMAN SCIENCES, AND VETERINARY MEDICINE

Each year, the National Institute of Food and Agriculture (NIFA) joins with APLU to sponsor an Annual Meeting lecture honoring one of three important historical figures of the land-grant university system: 1) William Henry Hatch for research; 2) Seaman A. Knapp for extension; and 3) and Justin Smith Morrill for whom the Morrill Act—which created the Land-grant University system—is named. The lecture series began in 1980 and since that inaugural year there have been thought-provoking lectures by many outstanding contributors to agriculture research, education, and extension. The William H. Hatch lecture commemorates the efforts of William H. Hatch, congressman from Missouri who championed the Agricultural Experiment Station Founding Bill that became law in 1887 and to celebrate the accomplishments of the Experiment Station System which the Hatch Act created. This year's lecture by South Dakota State University President Barry Dunn is titled *Wokini: A Morrill Obligation to Create a New Beginning*.

INTRODUCTION: **Scott Hutchins**, Deputy Under Secretary of Research,
Education, and Economics, U.S. Department of Agriculture

SPEAKER: **Barry Dunn**, President, South Dakota State University

Noon–1:15 p.m. ■ Sapphire 410A

■ CFERR Executive Committee Luncheon and Meeting

EXECUTIVE COMMITTEE MEMBERS ONLY

CHAIR: **Noelle Cockett**, President, Utah State University

1:30–2:30 p.m. ■ Aqua Salon DE

■ Smart and Connected Rural Communities

JOINT SESSION WITH THE BOARDS ON AGRICULTURE
ASSEMBLY, HUMAN SCIENCES, AND VETERINARY MEDICINE AND
COMMISSION ON ECONOMIC & COMMUNITY ENGAGEMENT

The viability of rural communities depends on continued competitiveness and resilience of its traditional industries, such as agriculture and manufacturing, the continued provision of important health care services, and the development of innovative new businesses. Universities are building partnerships between

their research and extension programs and with state and local governments and economic development organizations to help communities acquire broadband service and develop the applications that matter most to the vitality of rural areas. This session will highlight several efforts that demonstrate the benefits of university engagement in these areas and why it is vital to form partnerships that connect the key strategic elements of smart and connected rural regions.

MODERATOR: **Ashley Stokes**, Assistant Vice President for Engagement and
Deputy Director of Extension, Colorado State University

PANELISTS: **Brian Whitacre**, Sarkeys Distinguished Professor,
Agricultural Economics, Oklahoma State University
James Barnes, Associate Extension Professor,
Agricultural Economics, Mississippi State University
Joe Luck, Associate Professor, Department of Biological
Systems Engineering, University of Nebraska Lincoln

3:15–4:15 p.m.

INSTITUTIONAL STRATEGIES SESSIONS

Choose one of the sessions presented by APLU, see pages 11–12 for descriptions and locations. Recommended for CFERR:

- Institutional Strategies for Community Engagement
- Institutional Strategies for Global Learning, Research, and Engagement
- Institutional Strategies for Degree Completion

4:30–6:00 p.m. ■ Indigo BCDFGH

KEYNOTE SESSION

■ In Service

See page 8 for more details.

6:00–7:30 p.m. ■ Indigo AE & Indigo Terrace

■ Welcome Reception

See page 9 for more details.

MONDAY, NOVEMBER 11

Noon-1:15 p.m. ▪ Indigo Ballroom

MONDAY LUNCHEON

■ Understanding Student Debt

See page 9 for more details.

3:30-4:45 p.m. ▪ Sapphire E

■ Serving Rural Students: Addressing Barriers to Access, Affordability, and Success

JOINT SESSION WITH THE COMMISSION ON ECONOMIC & COMMUNITY ENGAGEMENT, BOARDS ON AGRICULTURE ASSEMBLY, HUMAN SCIENCES, AND VETERINARY MEDICINE AND POWERED BY PUBLICS

Nearly 20 percent of the U.S. population lives in rural areas. Greater postsecondary success for rural students can lead to more rewarding careers for these students and more vibrant rural communities. Higher education leaders are increasingly being asked how they might improve rural students' access to and success in higher education. This session will provide a framing of this issue and offer some examples of institutional initiatives to improve rural students' higher education access and success.

PANELISTS: **Maria Luna-Torres**, *Project Director, Rural Student Success Initiative, Texas A&M AgriLife Extension*
Catherine Manly, *Ph.D. Student, University of Massachusetts*
Sharon Paynter, *Assistant Vice Chancellor for Community Engagement and Research, East Carolina University*
Allen J. Smart, *Founder, PhilanthropywoRx*

TUESDAY, NOVEMBER 12

CLOSING SESSIONS

8:30-9:15 a.m. ▪ Indigo CDGH

■ The Empowered University

See page 10 for more details.

9:15-9:45 a.m. ▪ Indigo CDGH

■ Higher Education & Immigration Policy

See page 10 for more details.

9:45-10:45 a.m. ▪ Indigo CDGH

■ The 2020 Election: Where Does It Stand?

See page 10 for more details.

CFERR Board on Agriculture Assembly (BAA)

SATURDAY, NOVEMBER 9

8:00-11:00 a.m. ▪ Aqua 300

■ Board on Agriculture Assembly Committee on Legislation and Policy (CLP) Breakfast and Meeting

CLP MEMBERS ONLY

CHAIR: **Marshall Stewart**, *Vice Chancellor for Extension and Engagement, and UM System Chief Engagement Officer, University of Missouri-Columbia*

11:30 a.m.-4:00 p.m. ▪ Indigo 204 B

■ Board on Agriculture Assembly Budget and Advocacy Committee (BAC) Luncheon and Meeting

BAC MEMBERS ONLY

CHAIR: **Craig Beyrouthy**, *Dean, College of Agriculture and Natural Resources, University of Maryland*

Noon–4:30 p.m. ▪ Cobalt 520

■ **Academic Programs Section Committee on Organization and Policy (ACOP) Luncheon and Business Meeting**

ACOP MEMBERS ONLY

CHAIR: **Marcos Fernandez**, *Associate Dean and Director, Academic Programs, Purdue University*

5:00–7:00 p.m. ▪ Indigo Terrace

■ **Joint Teaching, Extension, Research, and Food Systems Leadership Institute Awards Recipient's Reception**

BY INVITATION ONLY

SPEAKER: **Douglas Steele**, *Vice President, Food, Agriculture, and Natural Resources, APLU*

SUNDAY, NOVEMBER 10

8:15–9:45 a.m. ▪ Aqua Salon DE

■ **A Community of Scholars Celebrating Excellence**

JOINT SESSION WITH THE BOARDS ON HUMAN SCIENCES AND VETERINARY MEDICINE

The U.S. Department of Agriculture's National Institute of Food and Agriculture and the APLU Board on Agriculture Assembly will present the following awards and recognition:

- Food and Agricultural Sciences Excellence in College and University Teaching Awards,
- Cooperative Extension Awards of Excellence and Diversity Award,
- Experiment Station Section Award for Excellence in Multistate Research, and
- Food Systems Leadership Institute

MODERATOR: **Orlando McMeans**, *Chancellor-Dean, Southern University Agricultural Research and Extension Center and College of Agricultural, Family, and Consumer Sciences, Southern University*

10:30–11:45 a.m. ▪ Aqua Salon DE

■ **William Henry Hatch Memorial Lecture**

JOINT SESSION WITH THE BOARDS ON HUMAN SCIENCES AND VETERINARY MEDICINE

Each year, the National Institute of Food and Agriculture (NIFA) joins with APLU to sponsor an Annual Meeting lecture honoring one of three important historical figures of the land-grant university system: 1) William Henry Hatch for research; 2) Seaman A. Knapp for extension; and 3) and Justin Smith Morrill for whom the Morrill Act—which created the Land-grant University system—is named. The lecture series began in 1980 and since that inaugural year there have been thought-provoking lectures by many outstanding contributors to agriculture research, education, and extension. The William H. Hatch lecture commemorates the efforts of William H. Hatch, congressman from Missouri who championed the Agricultural Experiment Station Founding Bill that became law in 1887 and to celebrate the accomplishments of the Experiment Station System which the Hatch Act created. This year's lecture by South Dakota State University President Barry Dunn is titled *Wokini: A Morrill Obligation to Create a New Beginning*.

INTRODUCTION: **Scott Hutchins**, *Deputy Under Secretary of Research, Education, and Economics, U.S. Department of Agriculture*

SPEAKER: **Barry Dunn**, *President, South Dakota State University*

Noon–1:15 p.m. ▪ Sapphire E

■ **Academic Programs Section (APS) Teaching Awards Luncheon**

BY INVITATION ONLY

CHAIRS: **Cynda Clary**, *Associate Dean, Academic Programs, Oklahoma State University*

Marcos Fernandez, *Associate Dean & Director of Academic Programs, Purdue University*

1:30–2:30 p.m. ■ Aqua Salon DE

■ Smart and Connected Rural Communities

JOINT SESSION WITH THE COMMISSION ON FOOD, ENVIRONMENT, AND RENEWABLE RESOURCES BOARDS ON HUMAN SCIENCES AND VETERINARY MEDICINE AND COMMISSION ON ECONOMIC & COMMUNITY ENGAGEMENT

The viability of rural communities depends on continued competitiveness and resilience of its traditional industries, such as agriculture and manufacturing, the continued provision of important health care services, and the development of innovative new businesses. Universities are building partnerships between their research and extension programs and with state and local governments and economic development organizations to help communities acquire broadband service and develop the applications that matter most to the vitality of rural areas. This session will highlight several efforts that demonstrate the benefits of university engagement in these areas and why it is vital to form partnerships that connect the key strategic elements of smart and connected rural regions.

MODERATOR: **Ashley Stokes**, *Assistant Vice President for Engagement and Deputy Director of Extension, Colorado State University*

PANELISTS: **Brian Whitacre**, *Sarkeys Distinguished Professor, Agricultural Economics, Oklahoma State University*
James Barnes, *Associate Extension Professor, Agricultural Economics, Mississippi State University*
Joe Luck, *Associate Professor, Department of Biological Systems Engineering, University of Nebraska Lincoln*

3:15–4:15 p.m.

INSTITUTIONAL STRATEGIES SESSIONS

Choose one of the sessions presented by APLU, see pages 11–12 for descriptions and locations. Recommended for BAA:

- Institutional Strategies for Community Engagement
- Institutional Strategies for Global Learning, Research, and Engagement

4:30–6:00 p.m. ■ Indigo BCDFGH

KEYNOTE SESSION

■ In Service

See page 8 for more details.

6:00–7:30 p.m. ■ Indigo AE & Indigo Terrace

■ Welcome Reception

See page 9 for more details.

MONDAY, NOVEMBER 11

7:00–8:00 a.m.

■ Regional Academic Programs Section Meetings

Cobalt 501A

NORTH CENTRAL ACADEMIC PROGRAMS SECTION (APS) REGIONAL MEETING

CHAIR: **Kelly Millenbah**, *Senior Associate Dean, College of Agriculture and Natural Resources, Michigan State University*

Aqua 311A

NORTHEAST ACADEMIC PROGRAM SECTION (APS) REGIONAL MEETING

CHAIR: **Joseph Sullivan**, *Associate Dean for Academic Programs, University of Maryland College Park*

Aqua 300A

SOUTHERN ACADEMIC PROGRAMS SECTION (APS) REGIONAL MEETING

CHAIR: **Elaine Turner**, *Dean, College of Agricultural and Life Sciences, University of Florida*

Sapphire 400A

WESTERN ACADEMIC PROGRAMS SECTION (APS) REGIONAL MEETING

CHAIR: **Brian Warnick**, *Associate Dean, Academic Programs & Student Services, Utah State University*

7:00–8:15 a.m. ■ Sapphire 400B

■ **Administrative Heads Section (AHS) Executive Committee Meeting and Breakfast**

CHAIR: **Ray McKinnie**, *Dean, College of Agriculture, Virginia State University*

7:00–8:15 a.m. ■ Cobalt 502

■ **International Agriculture Section (IAS) Business Meeting**

All IAS members, as well as others interested in international agricultural activities, are welcome to attend.

CHAIR: **David Gray**, *Dean, Faculty of Agriculture, Dalhousie University*

8:15–9:45 a.m. ■ Sapphire GH

■ **Board on Agriculture Assembly (BAA) Business Meeting**

CHAIR: **Orlando McMeans**, *Chancellor-Dean, Southern University Agricultural Research and Extension Center and College of Agricultural, Family, and Consumer Sciences, Southern University*

10:30–11:45 a.m. ■ Sapphire GH

■ **Higher Education as Policy, Systems, and Environmental Change Catalysts**

Increasing equity, building inclusive systems that reach diverse communities, and leveraging higher education institutions to create the conditions that build a culture of health both on and off campus—benefit institutions from both mission and business standpoints. This session will include discussions of guidance and action items that higher education is taking and might take in supporting a culture of health and particularly around policy, systems, and environmental changes. Michelle Rodgers will provide an overview on how Well-Connected Communities are engaged in policy changes at the local level through multi-sector coalitions including public school partnerships, faith-based institutions, and local government efforts. Her talk will serve as a launch

point for discussion of our higher education system potential to impact state and national policy, systems, and environmental changes.

MODERATOR: **Orlando McMeans**, *Chancellor-Dean, Southern University Agricultural Research and Extension Center and College of Agricultural, Family, and Consumer Sciences, Southern University*

SPEAKER: **Michelle Rodgers**, *Associate Dean and Director of Cooperative Extension, University of Delaware*

Noon–1:15 p.m. ■ Indigo Ballroom

MONDAY LUNCHEON

■ **Understanding Student Debt**

See page 9 for more details.

1:30–2:45 p.m. ■ Cobalt 501BC

■ **Academic Programs Section (APS) Workshop and Business Meeting**

CHAIR: **Marcos Fernandez**, *Associate Dean & Director of Academic Programs, Purdue University*

1:30–2:45 p.m. ■ Aqua 311B

■ **CES/ECOP: Applying DEI Principles on Campuses and in Communities**

JOINT SESSION WITH THE COUNCIL OF 1890 UNIVERSITIES AND COMMISSION ON ACCESS, DIVERSITY, & EXCELLENCE

Learn the principles of diversity, equity, and inclusion in academic programs and university engagement. Two case studies will be presented. The first includes a university that has had success in including diversity in undergraduate and graduate engineering programs and the second will feature Cooperative Extension's community engagement program on coming together for racial understanding where these principles have and/or might be better engaged.

PANELISTS: **Fred Bonner**, *Endowed Chair, College of Education, Prairie View A&M University*
Rachel Welborn, *Associate Director, Mississippi State University/Southern Rural Development Center*

1:30–5:00 p.m. ■ Indigo 202

■ **Administrative Heads Section (AHS) Business Meeting**

CHAIR: **Ray McKinnie**, *Dean, College of Agriculture, Virginia State University*

1:30–5:00 p.m. ■ Sapphire 410

■ **Experiment Station Committee on Organization and Policy (ESCOP) Business Meeting**

CHAIR: **George Hopper**, *Dean, College of Agriculture and Life Sciences and Director Mississippi Agriculture and Forestry Experiment Station, Mississippi State University*

3:30–4:45 p.m. ■ Sapphire E

■ **Serving Rural Students: Addressing Barriers to Access, Affordability, and Success**

JOINT SESSION WITH THE COMMISSION ON ECONOMIC & COMMUNITY ENGAGEMENT, BOARDS ON HUMAN SCIENCES AND VETERINARY MEDICINE, AND POWERED BY PUBLICS

Nearly 20 percent of the U.S. population lives in rural areas. Greater postsecondary success for rural students can lead to more rewarding careers for these students and more vibrant rural communities. Higher education leaders are increasingly being asked how they might improve rural students' access to and success in higher education. This session will provide a framing of this issue and offer some examples of institutional initiatives to improve rural students' higher education access and success.

PANELISTS: **Maria Luna-Torres**, *Project Director, Rural Student Success Initiative, Texas A&M AgriLife Extension*
Catherine Manly, *Ph.D. Student, University of Massachusetts*
Sharon Paynter, *Assistant Vice Chancellor for Community Engagement and Research, East Carolina University*
Allen J. Smart, *Founder, PhilanthropywoRx*

3:30–5:00 p.m. ■ Indigo 204

■ **CES/ECOP: Engaging Deep Partnerships to Transform Healthy Communities**

JOINT SESSION WITH THE COALITION OF URBAN SERVING UNIVERSITIES

Learn strategies for effectively engaging and galvanizing campus and rural/urban communities to build deep partnerships to transform healthy communities. Session participants will engage in interactive session where participants design and workshop strategies for building partnerships to address health issues.

PANELISTS: **Michelle Rodgers**, *Associate Dean and Director of Cooperative Extension, University of Delaware*
Barbara Smith, *Vice President Health Policy and Innovation, Virginia Commonwealth University*

6:30–9:00 p.m. ■ Cobalt 500

■ **1890 Association of Research Directors (ARD) Business Meeting and Dinner**

1890 ARD MEMBERS ONLY

CHAIR: **Moses Kairo**, *Dean, University of Maryland, Eastern Shore*

TUESDAY, NOVEMBER 12

CLOSING SESSIONS

8:30–9:15 a.m. ■ Indigo CDGH

■ **The Empowered University**

See page 10 for more details.

9:15–9:45 a.m. ■ Indigo CDGH

■ **Higher Education & Immigration Policy**

See page 10 for more details.

9:45–10:45 a.m. ■ Indigo CDGH

■ **The 2020 Election: Where Does It Stand?**

See page 10 for more details.

11:00 a.m.–2:00 p.m. ■ Indigo 204A

■ **Board on Agriculture Assembly 2019 and 2020
Policy Board of Directors' Meeting and Luncheon**

BAAPBD MEMBERS ONLY

CHAIR: **Orlando McMeans**, *Chancellor-Dean, Southern University
Agricultural Research and Extension Center and College of
Agricultural, Family, and Consumer Sciences, Southern University*

CFERR Board on Human Sciences (BoHS)

SATURDAY, NOVEMBER 9

10:00 a.m.–3:00 p.m. ■ Indigo 204A

■ **1890 Family and Consumer Sciences (FCS)
Administrators' Business Meeting and Luncheon**

1890 FAMILY AND CONSUMER SCIENCES (FCS)
ADMINISTRATORS' MEMBERS ONLY

CHAIR: **Brenda Martin**, *Chair, Department of Human Sciences,
University of Arkansas at Pine Bluff*

4:00–9:00 p.m. ■ Indigo 204A

■ **Board on Human Sciences (BoHS) Board
of Directors' Meeting and Dinner**

BOHS MEMBERS ONLY

CHAIR: **John B. Buckwalter**, *Betty L. Tointon Dean, College of
Health and Human Sciences, Kansas State University*

SUNDAY, NOVEMBER 10

8:15–9:45 a.m. ■ Aqua Salon DE

■ **A Community of Scholars Celebrating Excellence**

JOINT SESSION WITH THE BOARDS ON AGRICULTURE
ASSEMBLY AND VETERINARY MEDICINE

The U.S. Department of Agriculture's National Institute of Food and Agriculture and the APLU Board on Agriculture Assembly will present the following awards and recognition:

- Food and Agricultural Sciences Excellence in College and University Teaching Awards,
- Cooperative Extension Awards of Excellence and Diversity Award,
- Experiment Station Section Award for Excellence in Multistate Research, and
- Food Systems Leadership Institute

MODERATOR: **Orlando McMeans**, *Chancellor-Dean, Southern University
Agricultural Research and Extension Center and College of
Agricultural, Family, and Consumer Sciences, Southern University*

10:30–11:45 a.m. ■ Aqua Salon DE

■ **William Henry Hatch Memorial Lecture**

JOINT SESSION WITH THE BOARDS ON AGRICULTURE
ASSEMBLY AND VETERINARY MEDICINE

Each year, the National Institute of Food and Agriculture (NIFA) joins with APLU to sponsor an Annual Meeting lecture honoring one of three important historical figures of the land-grant university system: 1) William Henry Hatch for research; 2) Seaman A. Knapp for extension; and 3) and Justin Smith Morrill for whom the Morrill Act—which created the Land-grant University system—is named. The lecture series began in 1980 and since that inaugural year there have been thought-provoking lectures by many outstanding contributors to agriculture research, education, and extension. The William H. Hatch lecture commemorates

the efforts of William H. Hatch, congressman from Missouri who championed the Agricultural Experiment Station Founding Bill that became law in 1887 and to celebrate the accomplishments of the Experiment Station System which the Hatch Act created. This year's lecture by South Dakota State University President Barry Dunn is titled *Wokini: A Morrill Obligation to Create a New Beginning*.

INTRODUCTION: **Scott Hutchins**, Deputy Under Secretary of Research, Education, and Economics, U.S. Department of Agriculture

SPEAKER: **Barry Dunn**, President, South Dakota State University

1:30–2:30 p.m. ■ Aqua Salon DE

■ Smart and Connected Rural Communities

JOINT SESSION WITH THE COMMISSION ON FOOD, ENVIRONMENT, AND RENEWABLE RESOURCES BOARDS ON AGRICULTURE ASSEMBLY AND VETERINARY MEDICINE AND COMMISSION ON ECONOMIC & COMMUNITY ENGAGEMENT

The viability of rural communities depends on continued competitiveness and resilience of its traditional industries, such as agriculture and manufacturing, the continued provision of important health care services, and the development of innovative new businesses. Universities are building partnerships between their research and extension programs and with state and local governments and economic development organizations to help communities acquire broadband service and develop the applications that matter most to the vitality of rural areas. This session will highlight several efforts that demonstrate the benefits of university engagement in these areas and why it is vital to form partnerships that connect the key strategic elements of smart and connected rural regions.

MODERATOR: **Ashley Stokes**, Assistant Vice President for Engagement and Deputy Director of Extension, Colorado State University

PANELISTS: **Brian Whitacre**, Sarkeys Distinguished Professor, Agricultural Economics, Oklahoma State University
James Barnes, Associate Extension Professor, Agricultural Economics, Mississippi State University
Joe Luck, Associate Professor, Department of Biological Systems Engineering, University of Nebraska Lincoln

3:15–4:15 p.m.

INSTITUTIONAL STRATEGIES SESSIONS

Choose one of the sessions presented by APLU, see pages 11–12 for descriptions and locations. Recommended for BoHS:

- Institutional Strategies for Community Engagement
- Institutional Strategies for Global Learning, Research, and Engagement

4:30–6:00 p.m. ■ Indigo BCDFGH

KEYNOTE SESSION

■ In Service

See page 8 for more details.

6:00–7:30 p.m. ■ Indigo AE & Indigo Terrace

■ Welcome Reception

See page 9 for more details.

MONDAY, NOVEMBER 11

8:15–9:45 a.m. ■ Aqua 310

■ BoHS Awards Breakfast: Celebrating Excellence in the Human Sciences

The Board on Human Sciences (BoHS) will present the following awards:

- Undergraduate Research Mentor Award
- Outstanding Engagement Award
- Ellen Swallow Richards Public Service Award
- Lifetime Achievement Award

CHAIR: **John B. Buckwalter**, Betty L. Tointon Dean, College of Health and Human Sciences, Kansas State University

Noon–1:15 p.m. ▪ Indigo Ballroom

MONDAY LUNCHEON

■ Understanding Student Debt

See page 9 for more details.

1:30–2:45 p.m. ▪ Sapphire A

■ Board on Human Sciences (BoHS) Business Meeting

BOHS MEMBERS ONLY

CHAIR: **John B. Buckwalter**, *Betty L. Tointon Dean, College of Health and Human Sciences, Kansas State University*

3:30–4:45 p.m. ▪ Sapphire A

■ Board on Human Sciences: Celebrating Excellence in the Human Sciences Award Winner Presentations

CHAIR: **John B. Buckwalter**, *Betty L. Tointon Dean, College of Health and Human Sciences, Kansas State University*

3:30–4:45 p.m. ▪ Sapphire E

■ Serving Rural Students: Addressing Barriers to Access, Affordability, and Success

JOINT SESSION WITH THE COMMISSION ON ECONOMIC & COMMUNITY ENGAGEMENT, BOARDS ON AGRICULTURE ASSEMBLY AND VETERINARY MEDICINE AND POWERED BY PUBLICS

Nearly 20 percent of the U.S. population lives in rural areas. Greater postsecondary success for rural students can lead to more rewarding careers for these students and more vibrant rural communities. Higher education leaders are increasingly being asked how they might improve rural students' access to and success in higher education. This session will provide a framing of this issue and offer some examples of institutional initiatives to improve rural students' higher education access and success.

PANELISTS: **Maria Luna-Torres**, *Project Director, Rural Student Success Initiative, Texas A&M AgriLife Extension*
Catherine Manly, *Ph.D. Student, University of Massachusetts*
Sharon Paynter, *Assistant Vice Chancellor for Community Engagement and Research, East Carolina University*
Allen J. Smart, *Founder, PhilanthropywoRx*

TUESDAY, NOVEMBER 12

CLOSING SESSIONS

8:30–9:15 a.m. ▪ Indigo CDGH

■ The Empowered University

See page 10 for more details.

9:15–9:45 a.m. ▪ Indigo CDGH

■ Higher Education & Immigration Policy

See page 10 for more details.

9:45–10:45 a.m. ▪ Indigo CDGH

■ The 2020 Election: Where Does It Stand?

See page 10 for more details.

CFERR Board on Veterinary Medicine (BVM)

SUNDAY, NOVEMBER 10

8:15–9:45 a.m. ▪ Aqua Salon DE

■ A Community of Scholars Celebrating Excellence

JOINT SESSION WITH THE BOARDS ON AGRICULTURE ASSEMBLY AND HUMAN SCIENCES

The U.S. Department of Agriculture's National Institute of Food and Agriculture and the APLU Board on Agriculture Assembly will present the following awards and recognition:

- Food and Agricultural Sciences Excellence in College and University Teaching Awards,
- Cooperative Extension Awards of Excellence and Diversity Award,
- Experiment Station Section Award for Excellence in Multistate Research, and
- Food Systems Leadership Institute

MODERATOR: **Orlando McMeans**, *Chancellor-Dean, Southern University Agricultural Research and Extension Center and College of Agricultural, Family, and Consumer Sciences, Southern University*

10:30–11:45 a.m. ■ Aqua Salon DE

■ William Henry Hatch Memorial Lecture

JOINT SESSION WITH THE BOARDS ON AGRICULTURE
ASSEMBLY AND HUMAN SCIENCES

Each year, the National Institute of Food and Agriculture (NIFA) joins with APLU to sponsor an Annual Meeting lecture honoring one of three important historical figures of the land-grant university system: 1) William Henry Hatch for research; 2) Seaman A. Knapp for extension; and 3) and Justin Smith Morrill for whom the Morrill Act—which created the Land-grant University system—is named. The lecture series began in 1980 and since that inaugural year there have been thought-provoking lectures by many outstanding contributors to agriculture research, education, and extension. The William H. Hatch lecture commemorates the efforts of William H. Hatch, congressman from Missouri who championed the Agricultural Experiment Station Founding Bill that became law in 1887 and to celebrate the accomplishments of the Experiment Station System which the Hatch Act created. This year's lecture by South Dakota State University President Barry Dunn is titled *Wokini: A Morrill Obligation to Create a New Beginning*.

INTRODUCTION: **Scott Hutchins**, *Deputy Under Secretary of Research, Education, and Economics, U.S. Department of Agriculture*

SPEAKER: **Barry Dunn**, *President, South Dakota State University*

1:30–2:30 p.m. ■ Aqua Salon DE

■ Smart and Connected Rural Communities

JOINT SESSION WITH THE COMMISSION ON FOOD, ENVIRONMENT, AND
RENEWABLE RESOURCES BOARDS ON AGRICULTURE ASSEMBLY AND HUMAN
SCIENCES AND COMMISSION ON ECONOMIC & COMMUNITY ENGAGEMENT

The viability of rural communities depends on continued competitiveness and resilience of its traditional industries, such as agriculture and manufacturing, the continued provision of important health care services, and the development of innovative new businesses. Universities are building partnerships between their research and extension programs and with state and local governments and economic development organizations to help communities acquire broadband service and develop the applications that matter most to the vitality of rural

areas. This session will highlight several efforts that demonstrate the benefits of university engagement in these areas and why it is vital to form partnerships that connect the key strategic elements of smart and connected rural regions.

MODERATOR: **Ashley Stokes**, *Assistant Vice President for Engagement and Deputy Director of Extension, Colorado State University*

PANELISTS: **Brian Whitacre**, *Sarkeys Distinguished Professor, Agricultural Economics, Oklahoma State University*

James Barnes, *Associate Extension Professor, Agricultural Economics, Mississippi State University*

Joe Luck, *Associate Professor, Department of Biological Systems Engineering, University of Nebraska Lincoln*

3:15–4:15 p.m.

INSTITUTIONAL STRATEGIES SESSIONS

Choose one of the sessions presented by APLU, see pages 11–12 for descriptions and locations. Recommended for BVM:

■ Institutional Strategies for Community Engagement

■ Institutional Strategies for Global Learning, Research, and Engagement

4:30–6:00 p.m. ■ Indigo BCDFGH

KEYNOTE SESSION

■ In Service

See page 8 for more details.

6:00–7:30 p.m. ■ Indigo AE & Indigo Terrace

■ Welcome Reception

See page 9 for more details.

MONDAY, NOVEMBER 11

Noon-1:15 p.m. ▪ Indigo Ballroom

MONDAY LUNCHEON

■ Understanding Student Debt

See page 9 for more details.

3:30-4:45 p.m. ▪ Sapphire E

■ Serving Rural Students: Addressing Barriers to Access, Affordability, and Success

JOINT SESSION WITH THE COMMISSION ON ECONOMIC & COMMUNITY ENGAGEMENT, BOARDS ON AGRICULTURE ASSEMBLY AND HUMAN SCIENCES AND POWERED BY PUBLICS

Nearly 20 percent of the U.S. population lives in rural areas. Greater postsecondary success for rural students can lead to more rewarding careers for these students and more vibrant rural communities. Higher education leaders are increasingly being asked how they might improve rural students' access to and success in higher education. This session will provide a framing of this issue and offer some examples of institutional initiatives to improve rural students' higher education access and success.

PANELISTS:

Maria Luna-Torres, Project Director, Rural Student Success Initiative, Texas A&M AgriLife Extension

Catherine Manly, Ph.D. Student, University of Massachusetts

Sharon Paynter, Assistant Vice Chancellor for Community Engagement and Research, East Carolina University

Allen J. Smart, Founder, PhilanthropywoRx

TUESDAY, NOVEMBER 12

CLOSING SESSIONS

8:30-9:15 a.m. ▪ Indigo CDGH

■ The Empowered University

See page 10 for more details.

9:15-9:45 a.m. ▪ Indigo CDGH

■ Higher Education & Immigration Policy

See page 10 for more details.

9:45-10:45 a.m. ▪ Indigo CDGH

■ The 2020 Election: Where Does It Stand?

See page 10 for more details.

COMMISSION ON INFORMATION, MEASUREMENT, & ANALYSIS (CIMA)

The Commission on Information, Measurement, and Analysis (CIMA) is a space for APLU institutions to create communities of practice around effective and efficient use of data to guide campus planning and decision making. Given the vast array of data sources within institutions, CIMA provides opportunities for cross-functional discussions on how to more systematically create and improve the data infrastructure and the strategic analysis capacity on campuses.

SUNDAY, NOVEMBER 10

8:15–9:45 a.m. ■ Cobalt 500

■ Leveraging Learning Analytics at the Course Level to Improve Student Success

JOINT SESSION WITH THE PERSONALIZED LEARNING CONSORTIUM

With artificial intelligence influencing how students learn, public higher education institutions can support personalized learning by implementing adaptive courseware. With this technology, faculty can track student behavior and performance in real time with learning analytics. So, what is the data telling us about student success? Attendees will learn about insights gained through the implementation of learning analytics technologies.

MODERATOR: **Karen Vignare**, *Executive Director, Personalized Learning Consortium, APLU*

PANELISTS: **Jill Buban**, *Chief Academic Officer, Unizin*
Vince Kellen, *Chief Information Officer, University of California, San Diego*
Jack Seuss, *Chief Information Officer, University of Maryland Baltimore County*

10:30–11:45 a.m. ■ Sapphire A

■ Measuring Internationalization in a Competitive Global Higher Education Market

JOINT SESSION WITH THE COMMISSION ON INTERNATIONAL INITIATIVES

Higher education institutions across the world are functioning within an increasingly globalized and competitive landscape. One aspect of the global competitiveness relates to the ability of institutions to attract international students and scholars. The shifts in international student and scholar mobility have been dramatic in recent years, and the landscape is expected to continue to change rapidly. This session will explore the implications of these shifts on how we approach measuring internationalization on our campuses and explore key success metrics in a global context. Learn how cross functional units across campus work together to enhance and measure the progress and impact of internationalization.

MODERATOR: **Karin Fischer**, *Senior Reporter, The Chronicle of Higher Education*

PANELISTS: **Janaka Ruwanpura**, *Vice Provost, International, University of Calgary*

Kiki Caruson, *Associate Professor & Assistant Vice President for Research, Innovation, and Global Affairs, University of South Florida*

Noon–1:15 p.m. ■ Cobalt 501B

■ CIMA Executive Committee Luncheon

EXECUTIVE COMMITTEE MEMBERS ONLY

1:30–2:30 p.m. ■ Cobalt 500

■ Primer on How to Transform the Landscape of Analytics with Data Governance

Concerns about privacy, security, cloud computing, data access, and the fair and ethical use of data come across our desks every day. Do you feel you don't know what you don't know about data governance? Think it is exclusively an IT issue? Think it is an institutional insurance policy? Think again. In this session, we will put together the basic components of data governance and break down the strategic and risk-related aspects. You will learn why it is a strategic priority. This non-

technical presentation will leave you with a better understanding of: a) what it takes to create a data governance structure, b) how you can maximize the value of data, and c) how to create a culture of data-informed decision making on your campus.

SPEAKERS: **Rick Burnette**, *Associate Vice President for Academic Affairs Metrics, Analytics and Institutional Data Administrator, Florida State University*
Braden Hosch, *Associate Vice President for Institutional Research, Planning, and Effectiveness, Stony Brook University*

3:15–4:15 p.m.

INSTITUTIONAL STRATEGIES SESSIONS

Choose one of the sessions presented by APLU, see pages 11–12 for descriptions and locations. Recommended for CIMA:

- **Institutional Strategies for Community Engagement**
- **Institutional Strategies for Degree Completion**
- **Institutional Strategies for Global Learning, Research, and Engagement**
- **Institutional Strategies for Innovation and Economic Prosperity**

4:30–6:00 p.m. ■ Indigo BCDFGH

KEYNOTE SESSION

- **In Service**

See page 8 for more details.

6:00–7:30 p.m. ■ Indigo AE & Indigo Terrace

- **Welcome Reception**

See page 9 for more details.

MONDAY, NOVEMBER 11

8:15–9:45 a.m. ■ Indigo 202

■ Measuring and Evaluating Equity at Public Institutions

JOINT SESSION WITH THE COMMISSION ON ACCESS, DIVERSITY, & EXCELLENCE

What do institutions do when they find inequity at their institutions? Many institutions collect and analyze data on equity, but are the data used effectively? This session reviews some of the common metrics on equity developed by institutional researchers and how diversity officers use data to address equity issues. The selected panelists will discuss challenges with collecting and analyzing quality data, explore what data are needed to better address equity issues, and how various campus constituents can work together to use data more effectively to address equity issues on campus.

MODERATOR: **Denise Pearson**, *Vice President of Academic Affairs and Equity Initiatives, Association of State Higher Education Executive Officers (SHEEO)*

PANELISTS: **Jason Simon**, *Assistant Vice President, Data Analytics, and Institutional Research, University of North Texas*
Mary Ann Villarreal, *Vice President for Equity, Diversity, and Inclusion, University of Utah*

10:30–11:45 a.m. ■ Indigo 202

■ Mind the Gap: Practical Applications for Narrowing the Achievement Gap at Public Institutions

JOINT SESSION WITH POWERED BY PUBLICS

Many institutions want to close the achievement gap—some have, others are still working on it. The Powered by Publics initiative focuses on closing the achievement gap through institution-driven initiatives. Senior leaders at three institutions will discuss and deconstruct strategic initiatives from the past, present, and future—identifying what works and what doesn't. Panelists will also discuss the context and culture around these initiatives, identifying obstacles to closing the achievement gap. This discussion will inform strategic plans that include achievement gap and initiatives embedded in the Powered by Publics

initiative. Audience members will learn from experiences of senior leaders in higher education and walk away with ideas on how to narrow the gap.

MODERATOR: **Rahim Rajan**, *Deputy Director, The Bill and Melinda Gates Foundation*

PANELISTS: **William E. “Brit” Kirwan**, *Chancellor Emeritus, University System of Maryland*

Beth Boehm, *Provost, University of Louisville*

Monica Brockmeyer, *Associate Provost for Student Success, Wayne State University*

Noon–1:15 p.m. ▪ Indigo Ballroom

MONDAY LUNCHEON

■ Understanding Student Debt

See page 9 for more details.

1:30–2:45 ▪ Sapphire KL

■ \$1.6T Student Debt: Is this a Crisis?

JOINT SESSION WITH THE COUNCILS ON GOVERNMENTAL AFFAIRS AND STRATEGIC COMMUNICATIONS

Public and policymaker perceptions of higher education are significantly shaped by student debt with the overall number drawing a lot of attention. Is this a national crisis though as some increasingly argue? Expert panelists will breakdown the \$1.5T in student debt to identify the parts of the debt that should be of biggest concern and discuss how student debt drives perception and policy including the 2020 presidential campaign.

MODERATOR: **Crystal Martinez**, *Director of Education, University of California*

PANELISTS: **Sandy Baum**, *Nonresident Senior Fellow, Center on Education Data and Policy, Urban Institute and Professor Emerita of Economics, Skidmore College*

Cinnamon Blair, *Chief Marketing and Communications Officer, The University of New Mexico*

Doug Lederman, *Editor and Co-founder, Inside Higher Ed*

3:30–4:45 p.m. ▪ Aqua Salon F

■ CIMA Business Meeting

OPEN TO CIMA MEMBERS ONLY

CIMA Business Meeting to welcome new Executive Committee Members and review new and old business.

CHAIR: **Tim Sands**, *President, Virginia Polytechnic Institute and State University*

5:00–7:00 p.m. ▪ Sapphire H

■ CIMA Reception

The CIMA reception is an opportunity to network with your colleagues from various roles at various institutions. Enjoy light hors d'oeuvres and drinks. The reception will feature a demo of the new VSA Analytics designed for benchmarking key performance metrics across peer groups. See new metrics, create and save custom peer groups, and explore four student success metrics. **This reception is sponsored by Precision Campus, the developer of VSA Analytics.**

TUESDAY, NOVEMBER 12

CLOSING SESSIONS

8:30–9:15 a.m. ▪ Indigo CDGH

■ The Empowered University

See page 10 for more details.

9:15–9:45 a.m. ▪ Indigo CDGH

■ Higher Education & Immigration Policy

See page 10 for more details.

9:45–10:45 a.m. ▪ Indigo CDGH

■ The 2020 Election: Where Does It Stand?

See page 10 for more details.

COMMISSION ON INTERNATIONAL INITIATIVES (CII)

The Commission on International Initiatives (CII) develops and implements a comprehensive international affairs agenda for senior leadership at public research universities. The Commission aims to facilitate a seamless integration of international dimensions into the learning, discovery and engagement missions of our APLU institutions. The CII fosters the development of globally competent students, internationally engaged faculty, and institutions capable of addressing global challenges. The commission works by identifying critical issues, gathering information, and creating opportunities for members to discuss challenges and share knowledge with one another. The commission serves as an advisory body to APLU and is integrally involved with all APLU discussions about comprehensive internationalization.

SATURDAY, NOVEMBER 9

1:00–4:00 p.m. ▪ Aqua 300A

■ Global Learning for All Workshop

PRE-CONFERENCE WORKSHOP: BY INVITATION ONLY

This session is a workshop for the Global Learning for All cohort.

4:00–6:00 p.m. ▪ Aqua 300A

■ CII Executive Committee Meeting

EXECUTIVE COMMITTEE MEMBERS ONLY

CHAIR: **Joanna Regulska**, *Vice Provost and Associate Chancellor,
Global Affairs University of California, Davis*

7:30–9:00 p.m. ▪ Off-Site

■ CII Executive Committee Dinner

BY INVITATION ONLY

SUNDAY, NOVEMBER 10

10:30–11:45 a.m. ▪ Sapphire A

■ Measuring Internationalization in a Competitive Global Higher Education Market

JOINT SESSION WITH THE COMMISSION ON
INFORMATION, MEASUREMENT, & ANALYSIS

Higher education institutions across the world are functioning within an increasingly globalized and competitive landscape. One aspect of the global competitiveness relates to the ability of institutions to attract international students and scholars. The shifts in international student and scholar mobility have been dramatic in recent years, and the landscape is expected to continue to change rapidly. This session will explore the implications of these shifts on how we approach measuring internationalization on our campuses and explore key success metrics in a global context. Learn how cross functional units across campus work together to enhance and measure the progress and impact of internationalization.

MODERATOR: **Karin Fischer**, *Senior Reporter, The Chronicle
of Higher Education*

PANELISTS: **Janaka Ruwanpura**, *Vice Provost, International,
University of Calgary*
Kiki Caruson, *Associate Professor & Assistant
Vice President for Research, Innovation, and
Global Affairs, University of South Florida*

Noon–1:15 p.m. ▪ Cobalt 501C

■ Global Learning for All Luncheon

BY INVITATION ONLY

1:30–2:30 p.m. ■ Sapphire GH

■ Promotion and Tenure for Public Engagement and Societal Benefit

JOINT SESSION WITH THE COUNCILS ON ACADEMIC AFFAIRS AND RESEARCH AND COMMISSION ON ECONOMIC & COMMUNITY ENGAGEMENT

As universities engage multiple publics more extensively, there are signs of potential change to traditional guidelines for faculty promotion and advancement. What are the current opportunities and challenges to incorporating credit for interdisciplinary research collaboration, more widespread engagement of stakeholders from sectors outside of one's academic institution, and translating fundamental discoveries and scientific expertise to greater societal use?

MODERATOR: **Karen Hanson**, *Senior Vice President for Academic Affairs and Provost, University of Minnesota*

PANELISTS: **Roger Brindley**, *USF System Vice President, USF World, University of South Florida*

David Conover, *Vice President for Research and Innovation, University of Oregon*

Duane Nellis, *President, Ohio University*

1:30–2:30 p.m. ■ Aqua 311

■ Building Alignment in Cross-Campus Teams to Support Student Success

JOINT SESSION WITH THE COUNCILS ON 1890s UNIVERSITIES AND STUDENT AFFAIRS, COMMISSION ON ACCESS, DIVERSITY, & EXCELLENCE AND POWERED BY PUBLICS

From academic departments to administrative offices, the focus of many faculty, staff, and administrators on college campuses is the success of the students they serve. New research shows the benefits of aligning departments across the university to improve student success efforts in a holistic manner. This session will address the various ways cross-campus teams are formed and operate. Highlights of the session include a panel discussing ways in which the offices of the Provost, Student Affairs, Diversity, Institutional Research, and International can effectively lead cross-campus teams and strategies to overcome the traditional silo structure of universities. Attendees will also participate in small group discussions where they will develop action plans for establishing new or improving upon existing cross-campus teams.

PANELISTS: **Gesele Durham**, *Associate Provost, Institutional Effectiveness and Planning, George Mason University*

Lisa Erwin, *Vice Chancellor for Student Life and Dean of Students, University of Minnesota Duluth*

Georgianna Melendez, *Assistant Chancellor for Diversity, Equity, and Inclusion, University of Massachusetts Boston*

Meghna Ramaswamy, *Director, International Research, University of Saskatchewan*

3:15–4:15 p.m.

INSTITUTIONAL STRATEGIES SESSIONS

Choose one of the sessions presented by APLU, see pages 11–12 for descriptions and locations. Recommended for CII:

■ Institutional Strategies for Global Learning, Research, and Engagement

4:30–6:00 p.m. ■ Indigo BCDFGH

KEYNOTE SESSION

■ In Service

See page 8 for more details.

6:00–7:30 p.m. ■ Indigo AE & Indigo Terrace

■ Welcome Reception

See page 9 for more details.

MONDAY, NOVEMBER 11

7:00–8:15 a.m. ■ Cobalt 502

■ International Agriculture Section (IAS) Business Meeting

All IAS members, as well as others interested in international agricultural activities, are welcome to attend.

CHAIR: **David Gray**, *Dean, Faculty of Agriculture, Dalhousie University*

8:15–9:45 a.m. ■ Aqua Salon ABCD

■ Protecting U.S. Science from Undue Foreign Influence

JOINT SESSION WITH THE COUNCILS ON ACADEMIC AFFAIRS,
GOVERNMENTAL AFFAIRS, RESEARCH, AND STRATEGIC COMMUNICATIONS

For over a half century, U.S. world leadership in fundamental science has been based on a strong partnership between the federal government and public research universities. Openness and collaboration have been key to the partnership. Despite periodic revisiting of security policies such as during the Cold War, the U.S. has strived to attract the best scientists and students on the planet to conduct their research here. As U.S. economic and security interests are threatened by foreign interference and attempted influence, how are federal research agencies and public research universities working together to address foreign threats while preserving scientific collaboration?

MODERATOR: **Roger Wakimoto**, *Vice Chancellor for Research, University of California, Los Angeles*

PANELISTS: **Jodi Black**, *Deputy Director, Office of Extramural Research, National Institutes of Health*

Chris Fall, *Director of the Office of Science, U.S. Department of Energy*

Rebecca Keiser, *Head, Office of International Science and Engineering, National Science Foundation*

10:30–11:45 a.m. ■ Sapphire D

■ Fostering Increased Student Services through a Student Wellness Model

JOINT SESSION WITH THE COUNCIL ON STUDENT AFFAIRS,
COMMISSION ON ACCESS, DIVERSITY, & EXCELLENCE AND
COALITION OF URBAN SERVING UNIVERSITIES

College student mental health and well-being is a major source of concern for higher education professionals. Counseling centers report increased requests for services, even as there are disparities at who accesses, uses, and benefits from these resources. Institutions continue to grapple with what wellness means and how a student-centered approach might effectively meet students' needs while deepening engagement. Wellness is not a class or a pill or yoga pose,

but how people think about and experience their lives and how the breadth of those experiences—emotional, academic, financial, social and health—interact and integrate to create or inhibit opportunities for students. A wellness model recognizes institutional attention toward an integrated approach to well-being is an essential shift in approach. Join this session to explore how to better support students today, and better design for the future.

MODERATOR: **Luoluo Hong**, *Associate Vice Chancellor for Student Affairs and Enrollment Management, Chancellor's Office, The California State University System*

PANELISTS: **David Arnold**, *Assistant Vice President for Health, Safety, and Well-Being Initiatives, NASPA*

Amelia Arria, *Professor, Department of Behavioral and Community Health; Director, Center on Young Adult Health and Development; and Director, Office of Planning and Evaluation, University of Maryland of Public Health*

Blanche Hughes, *Vice President, Student Affairs, Colorado State University*

Joanna Regulska, *Vice Provost and Associate Chancellor, Global Affairs, Office of the Chancellor and Provost and Professor of Gender, Sexuality and Women's Studies, University of California, Davis*

10:30–11:45 a.m. ■ Sapphire KL

■ The Impact of Belonging on Student Success

JOINT SESSION WITH THE COALITION OF URBAN SERVING UNIVERSITIES
AND COMMISSION ON ACCESS, DIVERSITY, & EXCELLENCE

This session will address belonging from the perspective of international students and first generation, minority, and underserved student populations. In many ways fluency in the language of higher education systems and processes,

similarly to spoken language, is fundamental to attaining a sense of belonging and navigating postsecondary experiences. During the session we will identify the factors that may support a students' fluency, highlighting the role of administrative structures and the importance of including senior international officers and chief diversity officers in identifying areas for change. Finally, we will focus on the role faculty play in fostering a sense of belonging for students, highlighting the work of our APLU institutions.

PANELISTS: **Taffye Benson Clayton**, *Associate Provost and Vice President for Inclusion and Diversity, Auburn University*

Cathy Buyarski, *Executive Director, Student Success Initiatives Associate Dean, Student Affairs, IUPUI*

Ahmad Ezzeddine, *Vice President for Educational Outreach and International Programs, Wayne State University*

Noon–1:15 p.m. ■ Indigo Ballroom

MONDAY LUNCHEON

■ Understanding Student Debt

See page 9 for more details.

1:30–2:45 p.m. ■ Sapphire I

■ CII Business Meeting

All attendees who are interested in international campus activities are welcome to attend.

CHAIR: **Joanna Regulska**, *Vice Provost and Associate Chancellor, Global Affairs, University of California, Davis*

3:30–4:45 p.m. ▪ Sapphire KL

■ International Student Enrollment Declines: Why is it Happening and is there a Political Fix?

JOINT SESSION WITH THE COUNCIL ON GOVERNMENTAL AFFAIRS

The global competition for students is getting tighter year by year. While the United States has been in the leading position for decades, its market share has steadily eroded over the past decade. While other countries are strengthening their policies to attract students, the climate for the United States grows increasingly challenging. Expert panelists will dig into the data to tell the deeper story on enrollment trends, discuss what other countries are doing to be more competitive, and assess the political and policy climate in the United States for reversing the trend.

MODERATOR: **Paul Weinberger**, *Director of Federal Relations, University of Illinois*

PANELISTS: **Jon Baseline**, *Executive Director of Immigration Policy, U.S. Chamber of Commerce*
David Di Maria, *Associate Vice Provost for International Education, University of Maryland, Baltimore County*
Debra Pozega Osburn, *Vice President, University Relations, University of Saskatchewan*

5:00–7:00 p.m. ▪ Sapphire Patio

■ IACC Reception

The International Advocacy Coordinating Committee (formerly IDACC) is the component of the Commission on International Initiatives (CII) that supports international programs advocacy through an annual membership-based assessment. This reception will provide an update on IACC's success in influencing authorization and appropriations legislation on international development, immigration reform, study abroad and international education, as well as look forward to next year's agenda. Feedback will be sought from IACC members on communications and future agenda. IACC members and non-members are welcome to attend.

TUESDAY, NOVEMBER 12

CLOSING SESSIONS

8:30–9:15 a.m. ▪ Indigo CDGH

■ The Empowered University

See page 10 for more details.

9:15–9:45 a.m. ▪ Indigo CDGH

■ Higher Education & Immigration Policy

See page 10 for more details.

9:45–10:45 a.m. ▪ Indigo CDGH

■ The 2020 Election: Where Does It Stand?

See page 10 for more details.

COMMISSION ON SCIENCE & MATHEMATICS TEACHING IMPERATIVE (SMTI)

Public university leaders working through the Commission on the Science and Mathematics Teaching Imperative (SMTI) partner with the K–12 community and other stakeholders to revolutionize science and mathematics teaching and teacher preparation, ensuring the next generation of students is college and career ready. Membership includes faculty and administrators from university leadership, colleges including education, sciences and engineering, STEM education center directors, and others involved in improving undergraduate STEM education and the preparation of K–12 teachers in STEM-related disciplines.

SUNDAY, NOVEMBER 10

3:15–4:15 p.m.

INSTITUTIONAL STRATEGIES SESSIONS

Choose one of the sessions presented by APLU, see pages 11–12 for descriptions and locations. Recommended for SMTI:

- **Institutional Strategies for Degree Completion**
- **Institutional Strategies for Global Learning, Research, and Engagement**

4:30–6:00 p.m. ■ Indigo BCDFGH

KEYNOTE SESSION

- **In Service**

See page 8 for more details.

6:00–7:30 p.m. ■ Indigo AE & Indigo Terrace

- **Welcome Reception**

See page 9 for more details.

7:00–8:30 p.m. ■ Cobalt 501A

■ SMTI Executive Committee Meeting

EXECUTIVE COMMITTEE MEMBERS ONLY

CHAIR: **Harris Pastides**, *President Emeritus,*
University of South Carolina

MONDAY, NOVEMBER 11

Noon–1:15 p.m. ■ Indigo Ballroom

MONDAY LUNCHEON

- **Understanding Student Debt**

See page 9 for more details.

TUESDAY, NOVEMBER 12

CLOSING SESSIONS

8:30–9:15 a.m. ■ Indigo CDGH

- **The Empowered University**

See page 10 for more details.

9:15–9:45 a.m. ■ Indigo CDGH

- **Higher Education & Immigration Policy**

See page 10 for more details.

9:45–10:45 a.m. ■ Indigo CDGH

- **The 2020 Election: Where Does It Stand?**

See page 10 for more details.

PERSONALIZED LEARNING CONSORTIUM

The Personalized Learning Consortium (PLC) is an APLU effort founded to help public universities seize new opportunities to use technology to improve learning outcomes for students through personalization. Now in its fourth year, the consortium of 14 institutions has launched projects focused on improved student success through adaptive learning technologies and integrated advising and student support initiatives. PLC membership is open to all public institutions that are interested in collaboration to support improving student success through personalized learning.

SUNDAY, NOVEMBER 10

8:15–9:45 a.m. ■ Cobalt 500

■ Leveraging Learning Analytics at the Course Level to Improve Student Success

JOINT SESSION WITH THE COMMISSION ON
INFORMATION, MEASUREMENT, & ANALYSIS

With artificial intelligence influencing how students learn, public higher education institutions can support personalized learning by implementing adaptive courseware. With this technology, faculty can track student behavior and performance in real time with learning analytics. So, what is the data telling us about student success? Attendees will learn about insights gained through the implementation of learning analytics technologies.

MODERATOR: Karen Vignare, *Executive Director, Personalized Learning Consortium, APLU*

PANELISTS: Jill Buban, *Chief Academic Officer, Unizin*
Vince Kellen, *Chief Information Officer, University of California, San Diego*
Jack Seuss, *Chief Information Officer, University of Maryland Baltimore County*

3:15–4:15 p.m.

INSTITUTIONAL STRATEGIES SESSIONS

Choose one of the sessions presented by APLU, see pages 11–12 for descriptions and locations. Recommended for PLC:

- Institutional Strategies for Community Engagement
- Institutional Strategies for Degree Completion
- Institutional Strategies for Global Learning, Research, and Engagement
- Institutional Strategies for Innovation and Economic Prosperity

4:30–6:00 p.m. ■ Indigo BCDFGH

KEYNOTE SESSION

■ In Service

See page 8 for more details.

6:00–7:30 p.m. ■ Indigo AE & Indigo Terrace

■ Welcome Reception

See page 9 for more details.

MONDAY, NOVEMBER 11

Noon–1:15 p.m. ■ Indigo Ballroom

MONDAY LUNCHEON

■ Understanding Student Debt

See page 9 for more details.

1:30–2:45 p.m. ■ Sapphire D

■ What's Zip Codes Got To Do With It? Taking An Asset Approach To Admissions

JOINT SESSION WITH THE COUNCIL ON ACADEMIC AFFAIRS,
COALITION OF URBAN SERVING UNIVERSITIES, AND
COMMISSION ON ACCESS, DIVERSITY, & EXCELLENCE

Universities across the country are faced with increased scrutiny around admissions processes with national headlines abounding on the topic. Nowhere is this issue more important than for public universities given their unique missions of serving their states and the country by providing increased access to high-quality education. But with a growing number of court cases and state policies that ban race as a consideration, how do institutions appropriately increase opportunity to students who may have had limited academic opportunities? This session explores the power and importance of understanding and accounting for environmental contexts, like neighborhood and high school characteristics, in admission processes. The panel will focus on various evidence-based holistic enrollment strategies that can be employed at scale and at cost to identify diverse student populations who can benefit the most from college degrees.

MODERATOR: **Michael Rao**, *President, Virginia Commonwealth University*

PANELISTS: **Philip Ballinger**, *Associate Vice Provost for Enrollment Management, University of Washington*

Stephen Handel, *Executive Director, Strategic Higher Education Assessment, The College Board*

Kathie Maynard, *Associate Dean for Innovations and Community Partnerships, University of Cincinnati*

TUESDAY, NOVEMBER 12

CLOSING SESSIONS

8:30–9:15 a.m. ■ Indigo CDGH

■ The Empowered University

See page 10 for more details.

9:15–9:45 a.m. ■ Indigo CDGH

■ Higher Education & Immigration Policy

See page 10 for more details.

9:45–10:45 a.m. ■ Indigo CDGH

■ The 2020 Election: Where Does It Stand?

See page 10 for more details.

POWERED BY PUBLICS (PXP)

APLU's Powered by Publics initiative has convened 130 change-ready institutions within 16 transformation clusters—reaching 3 million undergraduate students, including 1 million Pell Grant recipients. Each cluster focuses on solving different pieces of the student success puzzle as public universities work together to tear down long-standing barriers, eliminate the achievement gap, prepare students to thrive in the 21st century workforce, and collectively increase the number of degrees they award.

SATURDAY, NOVEMBER 9

8:30 a.m.–6 p.m. ■ Aqua Salon ABCDE

■ Powered by Publics 2019 Design Challenge

BY INVITATION ONLY

The Powered by Publics 2019 Design Challenge is an opportunity for teams from all 130 Powered by Publics universities and state systems to come together in person for cross-cluster learning, sharing, and planning for the next year. This day-long event will provide a space for each cluster to share results from its first year of work and engage in interactive, cross-cluster discussion around common challenges and lessons learned on key topics. Every cluster will also have dedicated, in-person time with their group to reflect, workshop and plan next steps for 2020 and beyond.

SUNDAY, NOVEMBER 10

10:30–11:45 a.m. ■ Aqua Salon C

■ Making Long-Term Financial Aid More Inclusive Through Completion Grants

JOINT SESSION WITH THE COUNCIL ON STUDENT AFFAIRS,
COMMISSION ON ACCESS, DIVERSITY, & EXCELLENCE, AND
COALITION OF URBAN SERVING UNIVERSITIES

As universities successfully increase access to higher education their evolving student bodies require continued evolution to meet new student needs. Chief among these concerns is increasing the degree completion rates for students with increasingly unmet financial needs. The rise of emergency aid and completion grants have demonstrated the need for institutions to identify and support these students. But, how do institutions successfully implement such programs? How have these interventions evolved over time? And moreover, what evidence is there of the real effect of these programs across multiple institutions? Each of these questions will be addressed by a group of institutions that have worked together to implement, evolve, and evaluate a common completion grant program across 11 broad- and open-access institutions.

MODERATOR: **Elizabeth Bejar**, *Senior Vice President for Academic and Student Affairs, Florida International University*

PANELISTS: **Edward Conroy**, *Assistant Director for Community Engagement and Research Application, Hope Center for College, Community, and Justice, College of Education, Temple University*

John Gunkel, *Vice Chancellor for Academic Programs and Strategic Partnerships, Rutgers University, Newark*

Melissa Pizzo, *Assistant Vice President, Enrollment Services, Arizona State University*

Karen Weddle-West, *Vice President for Student Academic Success and Director of Diversity Initiatives, University of Memphis*

1:30–2:30 p.m. ■ Aqua 311

■ Building Alignment in Cross-Campus Teams to Support Student Success

JOINT SESSION WITH THE COUNCILS ON 1890s UNIVERSITIES AND STUDENT AFFAIRS AND COMMISSIONS ON ACCESS, DIVERSITY, & EXCELLENCE AND INTERNATIONAL ISSUES

From academic departments to administrative offices, the focus of many faculty, staff, and administrators on college campuses is the success of the students they serve. New research shows the benefits of aligning departments across the university to improve student success efforts in a holistic manner. This session will address the various ways cross-campus teams are formed and operate. Highlights of the session include a panel discussing ways in which the offices of the Provost, Student Affairs, Diversity, Institutional Research, and International can effectively lead cross-campus teams and strategies to overcome the traditional silo structure of universities. Attendees will also participate in small group discussions where they will develop action plans for establishing new or improving upon existing cross-campus teams.

PANELISTS: **Gesele Durham**, *Associate Provost, Institutional Effectiveness and Planning, George Mason University*
Lisa Erwin, *Vice Chancellor for Student Life and Dean of Students, University of Minnesota Duluth*
Georgianna Melendez, *Assistant Chancellor for Diversity, Equity, and Inclusion, University of Massachusetts Boston*
Meghna Ramaswamy, *Director, International Research, University of Saskatchewan*

3:15–4:15 p.m.

INSTITUTIONAL STRATEGIES SESSIONS

Choose one of the sessions presented by APLU, see pages 11–12 for descriptions and locations. Recommended for PxP:

■ Institutional Strategies for Degree Completion

4:30–6:00 p.m. ■ Indigo BCDFGH

KEYNOTE SESSION

■ In Service

See page 8 for more details.

6:00–7:30 p.m. ■ Indigo AE & Indigo Terrace

■ Welcome Reception

See page 9 for more details.

MONDAY, NOVEMBER 11

8:15–9:45 a.m. ■ Sapphire D

■ They Served to Secure our Future; How are We Serving to Secure Theirs?

JOINT SESSION WITH THE COUNCIL ON STUDENT AFFAIRS AND COMMISSION ON ACCESS, DIVERSITY, & EXCELLENCE

Higher education institutions are seeing more veteran and military-connected students as more students take advantage of the Post-9/11 GI Bill financial aid options. While these benefits serve as an effective tool for degree attainment, they do not ensure success for student veterans who may find the world of academia a stark contrast to military life. These unique adult learners come to higher education with opportunities and challenges that differ from traditional college students. In this session, we will explore how institutions can implement best-practice approaches to promote student veteran success that are crucial for their transition into and success within higher education.

MODERATOR: **Col. Jerry Smith (USMC Ret.)**, *Director, Veteran Resource and Support Center, Texas A&M University*

PANELISTS: **Force Master Chief Mamudu “Karim” Cole**, *Naval Education and Training Command*
James Chirido, *Student, Construction Science Major, Texas A&M University*
Crisann Hanes (USMC), *Graduate Advisor, Evening and Online MBA Programs, Colorado State University*
Cody Nicholls, *Assistant Dean of Students, Military and Veteran Engagement, University of Arizona*

8:15–9:45 a.m. ■ Aqua Salon F

■ Why Mindset Matters for Student Success— And What to do About it

JOINT SESSION WITH THE COALITION OF URBAN SERVING UNIVERSITIES

Research on learning mindsets—such as belonging, growth mindset, and purpose—is generating excitement among leaders seeking to improve student success. But how is this translating to practice? During this session, you’ll hear from leaders at the forefront of campus innovation and redesign. They’ll share ways they are exploring and testing changes to support equity in students’ experience—whether by campus communications, messages in syllabi, classroom-based interventions, or even the physical environment. Participants will be engaged in a dialogue and gain access to new strategies, tools, and resources to support their own work to create equitable learning environments.

PANELISTS: **Denise Bartell**, *Associate Vice Provost for Student Success, University of Toledo*
Steve Dandaneau, *Associate Provost and Executive Director of the Reinvention Collaborative, Colorado State University*
Tiffany Mfume, *Assistant Vice-President for Student Success and Retention, Morgan State University*

10:30–11:45 a.m. ■ Indigo 202

■ Mind the Gap: Practical Applications for Narrowing the Achievement Gap at Public Institutions

JOINT SESSION WITH THE COMMISSION ON
INFORMATION, MEASUREMENT, & ANALYSIS

Many institutions want to close the achievement gap—some have, others are still working on it. The Powered by Publics initiative focuses on closing the achievement gap through institution-driven initiatives. Senior leaders at three institutions will discuss and deconstruct strategic initiatives from the past, present, and future—identifying what works and what doesn’t. Panelists will also discuss the context and culture around these initiatives, identifying obstacles to closing the achievement gap. This discussion will inform strategic plans that

include achievement gap and initiatives embedded in the Powered by Publics initiative. Audience members will learn from experiences of senior leaders in higher education and walk away with ideas on how to narrow the gap.

MODERATOR: **Rahim Rajan**, *Deputy Director, The Bill and Melinda Gates Foundation*

PANELISTS: **Monica Brockmeyer**, *Associate Provost for Student Success, Wayne State University*
Beth Boehm, *Provost, University of Louisville*
William E. “Brit” Kirwan, *Chancellor Emeritus, University System of Maryland*

Noon–1:15 p.m. ■ Indigo Ballroom

MONDAY LUNCHEON

■ Understanding Student Debt

See page 9 for more details.

1:30–2:45 p.m. ■ Sapphire D

■ What’s Zip Codes Got to Do with It? Taking an Asset Approach to Admissions

JOINT SESSION WITH THE COUNCILS ON ACADEMIC AFFAIRS AND
STUDENT AFFAIRS, COALITION OF URBAN SERVING UNIVERSITIES,
COMMISSION ON ACCESS, DIVERSITY, & EXCELLENCE

Universities across the country are faced with increased scrutiny around admissions processes with national headlines abounding on the topic. Nowhere is this issue more important than for public universities given their unique missions of serving their states and the country by providing increased access to high-quality education. But with a growing number of court cases and state policies that ban race as a consideration, how do institutions appropriately increase opportunity to students who may have had limited academic opportunities? This session explores the power and importance of understanding and accounting for environmental contexts, like neighborhood and high school characteristics, in admission processes. The panel will focus on various evidence-based holistic

enrollment strategies that can be employed at scale and at cost to identify diverse student populations who can benefit the most from college degrees.

MODERATOR: **Michael Rao**, *President, Virginia Commonwealth University*

PANELISTS: **Philip Ballinger**, *Associate Vice Provost for Enrollment Management, University of Washington*

Stephen Handel, *Executive Director, Strategic Higher Education Assessment, The College Board*

Kathie Maynard, *Associate Dean for Innovations and Community Partnerships, University of Cincinnati*

3:30–4:45 p.m. ■ Sapphire E

■ **Serving Rural Students: Addressing Barriers to Access, Affordability, and Success**

JOINT SESSION WITH THE COMMISSION ON ECONOMIC & COMMUNITY ENGAGEMENT AND BOARDS ON AGRICULTURE ASSEMBLY, HUMAN SCIENCES, AND VETERINARY MEDICINE AND

Nearly 20 percent of the U.S. population lives in rural areas. Greater postsecondary success for rural students can lead to more rewarding careers for these students and more vibrant rural communities. Higher education leaders are increasingly being asked how they might improve rural students' access to and success in higher education. This session will provide a framing of this issue and offer some examples of institutional initiatives to improve rural students' higher education access and success.

PANELISTS: **Maria Luna-Torres**, *Project Director, Rural Student Success Initiative, Texas A&M AgriLife Extension*

Catherine Manly, *Ph.D. Student, University of Massachusetts*

Sharon Paynter, *Assistant Vice Chancellor for Community Engagement and Research, East Carolina University*

Allen J. Smart, *Founder, PhilanthropywoRx*

TUESDAY, NOVEMBER 12

CLOSING SESSIONS

8:30–9:15 a.m. ■ Indigo CDGH

■ **The Empowered University**

See page 10 for more details.

9:15–9:45 a.m. ■ Indigo CDGH

■ **Higher Education & Immigration Policy**

See page 10 for more details.

9:45–10:45 a.m. ■ Indigo CDGH

■ **The 2020 Election: Where Does It Stand?**

See page 10 for more details.

AFFILIATES

THURSDAY, NOVEMBER 7

6:00–9:00 p.m. ▪ Aqua 310A

■ **Council for Agricultural Research, Extension and Teaching (CARET) Executive Committee Dinner**

CARET EXECUTIVE COMMITTEE MEMBERS ONLY

FRIDAY, NOVEMBER 8

8:00–4:00 p.m. ▪ Aqua 310

■ **Council on Agricultural Research, Extension, and Teaching (CARET) Executive Committee Meeting**

CARET EXECUTIVE COMMITTEE MEMBERS ONLY

SATURDAY, NOVEMBER 9

8:00 a.m.–3:30 p.m. ▪ Cobalt 501AB

■ **FSLI Encore: Additional Leadership Development for the FSLI Alumni**

BY INVITATION ONLY

FSLI Encore is a leadership workshop held as a professional development and networking opportunity for the Food Systems Leadership Alumni to expand their leadership skills.

MONDAY, NOVEMBER 11

11:00 a.m.–3:00 p.m. ▪ Aqua Boardroom

■ **North American Young Research Universities Network (NAYRUN) Meeting**

BY INVITATION ONLY

This will be an informal gathering where members of the North American Young Research Universities Network (NAYRUN) may discuss NAYRUN's mission and goals, potential for future collaboration, and individual member university's goals and aspirations.

3:00–8:00 p.m. ▪ Cobalt 502

■ **The University Innovation Alliance Board Meeting with Dinner**

BY INVITATION ONLY

6:00–8:00 p.m. ▪ Cobalt 520

■ **University at Albany Alumni Reception**

BY INVITATION ONLY

TUESDAY, NOVEMBER 12

9:00 a.m.–2:00 p.m. ▪ Indigo 204 B

■ **Initiatives in the Spirit of the Meyerhoff Scholars Program**

BY INVITATION ONLY

MEETING POLICIES

Admission to Annual Meeting sessions and events is open only to those who have registered and have badges. Spouses/guests wishing to participate in sessions and meal functions must register using a separate registration form for the Annual Meeting or purchase meal tickets. A limited number of meal tickets will be available for purchase on-site. The registration fee covers attendance at all sessions: the breakfasts on Sunday, Monday, and Tuesday; the Sunday Welcome Reception; the Monday luncheon; and the networking breaks. Some meetings and meal events are by invitation only and are so identified in the program.

Substitution Policy

Substitution of registrations is permitted prior to the conference and on-site. Only one substitution is permitted per original registrant. The individual submitting the substitution request is responsible for all financial obligations (any balance due) associated with that substitution as well as updating any contact information.

Consent to Use of Photographic Images

Registration and attendance at, or participation in, APLU meetings and other activities constitutes an agreement by the registrant to APLU's use and distribution (both now and in the future) of the registrant or attendee's image or voice in photographs, videotapes, electronic reproductions, and audiotapes of such events and activities.

Recording of Sessions

Video or audio recordings by attendees is prohibited unless previously approved by APLU. Taking and sharing personal photos is permitted (and encouraged).

Media

All sessions, except for the Council of Presidents and specified business meetings, are open to the media, unless otherwise noted as closed or by invitation only. Media are required to sign in at the registration desk and obtain an Annual Meeting badge.



ABOUT THE HILTON SAN DIEGO BAYFRONT

Alluring and inspired by maritime culture, the distinctive coastal influence is clear the moment you arrive at 30-story waterfront hotel. Featuring newly renovated guest rooms that are authentically San Diego in their design, the Hilton San Diego Bayfront hotel is conveniently located near many of San Diego's most exciting attractions and is within walking distance of the vibrant Gaslamp Quarter, home to fabulous shopping, dining and nightlife. Enjoy stunning bay and city views, relaxing leisure facilities, extensive meeting space, and unique dining venues.

Hotel Dining

ODYSEA

Odysea, "A Liquid Adventure," is a waterfront destination featuring distinctive flights of both popular and one-of-a-kind drinks. Odysea's perch beside the water—including outdoor terrace—is a main gathering place for hotel visitors. Indulge in house-made infusions and bitters such as lavender tequila and strawberry rhubarb rum, as well as unique barrel aged cocktails. Odysea is the first lobby bar to include iPad stations where our guests can unwind while surfing the Internet.

HOURS: 2:00 p.m.-1:30 a.m.

STARBUCKS

HOURS: 5:30 a.m.-6:00 p.m.

SWEET THINGS FROZEN YOGURT

Sweet Things Frozen Yogurt features a self-serve style yogurt bar with a wide selection of flavors and toppings. From fruity tarts, no sugar added options and dairy-free sorbets to rich and creamy flavors, there's something sweet for everyone. Top it off with

decadent candies and chocolates for a truly rich delight or sprinkle with honey-almond granola and fresh seasonal fruit for a lighter, healthier treat.

**HOURS: Sunday-Thursday: 7:00 a.m.-11:00 p.m.
Friday-Saturday: 7:00 a.m.-Midnight**

THE POOL CLUB

This chic modern space draws inspiration from the breathtaking San Diego landscape from the hardwood floors mimicking local sun-soaked palms, to chandeliers reflecting the gentle waves of the bay and accent pillows bringing out a pop of color reminiscent of the San Diego sun. The space has been designed to have an openness not only in floor plan, but also in attitude, energy and service. Enjoy the view or catch a sporting event while indulging in our local California coastal-inspired cuisine and your choice from a large selection of hand-crafted cocktails, stellar California wines or local micro-brews.

**HOURS: Friday-Sunday: 11:00 a.m.-8:00 p.m.
Monday-Thursday: 11:00 a.m.-6:00 p.m.**



VELA

Latin for 'sail', Vela is the signature restaurant for the hotel and the centerpiece for our creative vision. Breathtaking views of the San Diego Bay are the best side dish to any breakfast. Join us for dinner, where Executive Chef David Scalise has designed Vela's menu to be an experiential journey through Baja and the Mediterranean. Open daily.

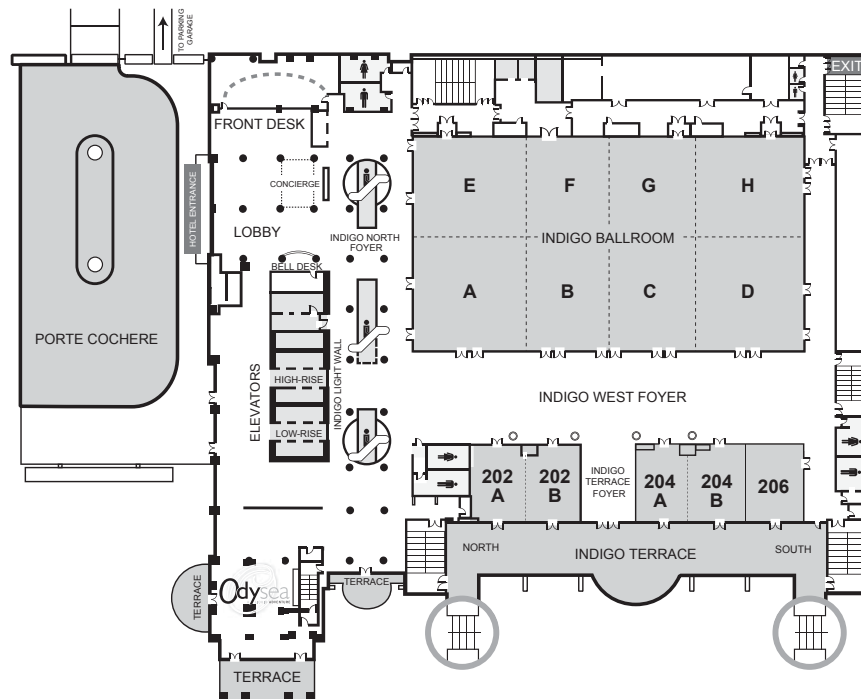
**HOURS: 6:30 a.m.-2:00 p.m. AND
5:30-10:00 p.m.**

Meeting Room Locations Hilton San Diego Bayfront

Indigo Level

SECOND FLOOR

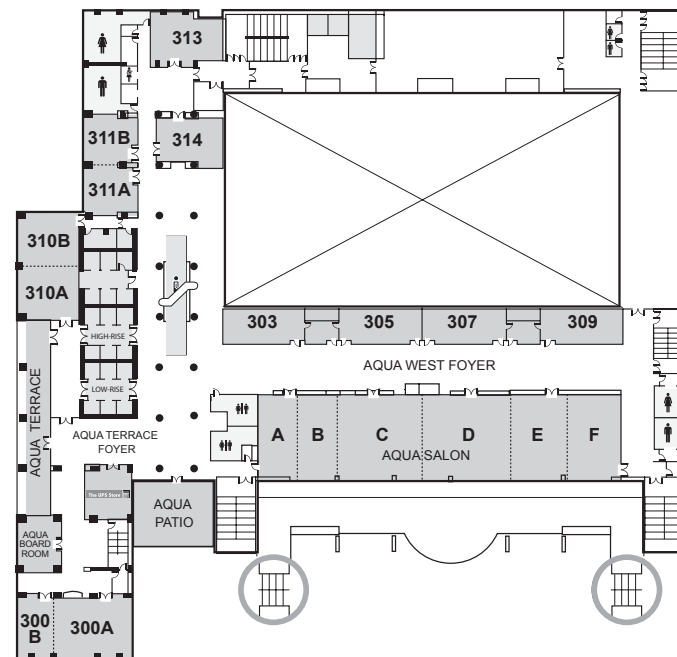
INDIGO BALLROOMS A-H ▪ INDIGO TERRACE ▪ INDIGO 202-206



Aqua Level

THIRD FLOOR

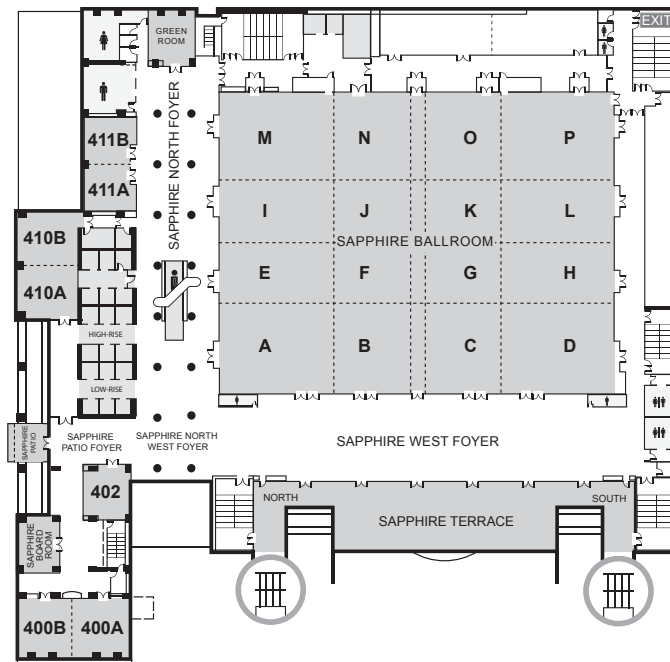
AQUA SALONS A-F ▪ AQUA 300-314



Sapphire Level

FOURTH FLOOR

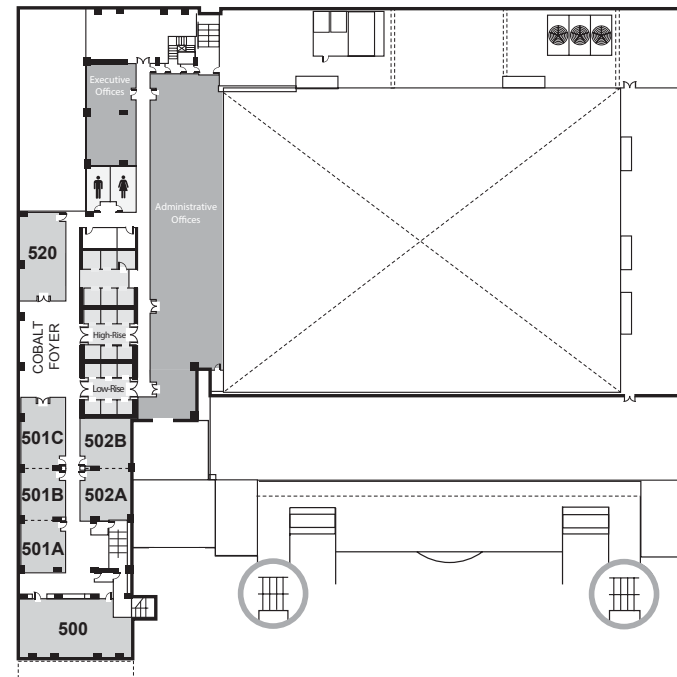
SAPPHIRE BALLROOMS A-P
SAPPHIRE TERRACE ▪ SAPPHIRE 400-411



Cobalt Level

FIFTH FLOOR

COBALT 500-520



ACKNOWLEDGMENTS

CUTTING EDGE DESIGN

Sally James and Katie Burgess
1606 20th Street, NW
Washington, DC 20009
202-265-9028
www.cuttingedgedc.com

DOYLE PRINTING

Dennis Doyle
6911 Old Landover Road
Landover, MD 20785
301-322-4800
www.doyleprint.com

CVENT EVENT MANAGEMENT

Steven Diaz and Christina Budd
www.cvent.com

CROWDCOMPASS MOBILE APPS

Elvis Bhattacharjee
Senior Mobile Solutions Specialist
www.crowdcompass.com

FREEMAN COMPANY

Valery Nugent
Client Solutions Manager
www.freeman.com

HILTON SAN DIEGO BAYFRONT

Eugenia Vance

ANNUAL MEETING VIDEO

Texas Tech University
University of California, Davis
University of Central Florida
University of Illinois at Urbana-Champaign
University of Maryland, Baltimore County
University of Washington



2019 MEETING SPONSORS & EXHIBITORS

PLATINUM



UCF

UC San Diego

GOLD



SILVER

THE CHRONICLE
of Higher Education*





BRONZE

2019 APLU BOARD OF DIRECTORS

Board Officers

CHAIR

Michael Drake

President, The Ohio State University

CHAIR-ELECT

Robert Jones

Chancellor, University of Illinois at Urbana-Champaign

PAST CHAIR

Robert Caret

Chancellor, University System of Maryland

COUNCIL OF PRESIDENTS CHAIR

Waded Cruzado

President, Montana State University

COUNCIL OF PRESIDENTS SECRETARY

Vacant

APLU PRESIDENT

Peter McPherson



DRAKE



JONES



CARET



CRUZADO



McPHERSON

Council Representatives

COUNCIL OF 190 UNIVERSITIES

Kent Smith, Jr.

President, Langston University

COUNCIL OF PRESIDENTS' & CHANCELLORS' SPOUSES

Monica Rao

Virginia Commonwealth University

COUNCIL ON ACADEMIC AFFAIRS

Joseph Glover

Provost and Senior Vice President, University of Florida

COUNCIL ON GOVERNMENTAL AFFAIRS

John Latini

Director of Federal Relations, Pennsylvania State University

COUNCIL ON RESEARCH

Sandra Brown

Vice Chancellor for Research, University of California, San Diego

COUNCIL ON STRATEGIC COMMUNICATIONS

Dana Topousis

Chief Marketing and Communications Officer, University of California, Davis

COUNCIL ON STUDENT AFFAIRS

Denise Maybank

Vice President and Associate Provost for Student Affairs and Services, Michigan State University

Commission Representatives

COALITION OF URBAN SERVING UNIVERSITIES

Mark Becker

President, Georgia State University

COMMISSION ON ACCESS, DIVERSITY, & EXCELLENCE

Mark Rosenberg

President, Florida International University

COMMISSION ON ECONOMIC & COMMUNITY ENGAGEMENT

Eric Barron

President, Pennsylvania State University

Chad Wootton

Associate Vice President for External Affairs,
Texas A&M University

COMMISSION ON FOOD, ENVIRONMENT, & RENEWABLE RESOURCES

Noelle Cockett

President, Utah State University

CFERR BOARD ON AGRICULTURE ASSEMBLY

Orlando McMeans

Chancellor-Dean, Southern University, Agricultural
Research and Extension Center and College of
Agricultural, Family, and Consumer Sciences,
Southern University

COMMISSION ON INFORMATION, MEASUREMENT, & ANALYSIS

Tim Sands

President, Virginia Polytechnic Institute
and State University

CIMA COMMITTEE ON BUSINESS AFFAIRS

Jonathan Pruitt

Vice Chancellor for Finance and Operations,
University of North Carolina at Chapel Hill

COMMISSION ON INTERNATIONAL INITIATIVES

Waded Cruzado

President, Montana State University

COMMISSION ON SCIENCE & MATHEMATICS TEACHING IMPERATIVE

Harris Pastides

President Emeritus, University of South Carolina

At-Large Members

Rita Cheng

President, Northern Arizona University

Vistasp Karbhari

President, University of Texas at Arlington

Harold Martin

Chancellor, North Carolina A&T State University

Kirk Schulz

President, Washington State University

Samuel Stanley

President, Michigan State University

Joseph Steinmetz

Chancellor, University of Arkansas

APLU OFFICES AND STAFF

OFFICE OF PRESIDENT & ADMINISTRATION

Peter McPherson, *President*
Howard Gobstein, *Executive Vice President*
Jean R. Middleton, CMP, *Vice President and Chief of Staff*
Michelle Szechenyi, *Director, Human Resources*
Sean Michael Love, *Executive Assistant*
KeiWana Bull, *Database/Meetings Assistant*
Kaelin Jackson, *Associate, Events*
Amily Loreda, *Associate, Human Resources*
Grayce McGregor, *Database Assistant*
Winston Savoy, *Associate, Events*

OFFICE OF ACADEMIC AFFAIRS

Bernard Mair, Ph.D., *Senior Vice President, Academic Affairs and Chief Academic Officer*
Travis York, Ph.D., *Assistant Vice President, Academic and Student Affairs*
Karen Vignare, Ph.D., *Executive Director, Personalized Learning Consortium*
Megan Tesene, Ph.D., *Associate Director, Personalized Learning Consortium*
Michael Lausch, *Program Manager, Personalized Learning Consortium*
Julia Chadwick, *Program Associate, Personalized Learning Consortium*
Stephen Schiavone, *Program Associate, Academic Affairs*

OFFICE OF ACCESS & SUCCESS

Eugene L. Anderson, Ph.D., *Vice President, Access and Success*
Rosalina Escandon, *Associate Director, Access and Success*
Porshia Brewer, *Associate, Access and Success*

OFFICE OF GOVERNMENTAL AFFAIRS

Craig Lindwarm, *Vice President, Governmental Affairs*
Deborah Altenburg, *Assistant Vice President, Research Advocacy and Policy*
Lindsey Tepe, *Director, Governmental Affairs*
D'Elia Wernecke, *Assistant Director, Governmental Affairs*
Yvonne Darpoh, *Associate, Governmental Affairs*

OFFICE OF DATA & POLICY ANALYSIS

Bryan Cook, Ph.D., *Vice President, Data and Policy Analysis*
Denise Nadasen, D.M., *Director of Data & Policy Analysis*
Andrew Paradise, Ph.D., *Data Analytics Manager*

OFFICE OF ECONOMIC DEVELOPMENT & COMMUNITY ENGAGEMENT

Sheila A. Martin, Ph.D., *Vice President, Economic Development and Community Engagement*
Shalin Jyotishi, *Assistant Director, Economic Development and Community Engagement*
Milan Ephraim, *Program Assistant, Economic Development and Community Engagement*
Alvi Escobar, *Innovation and Economic Prosperity Program Coordinator*

OFFICE OF FINANCE

Emily van Loon, CPA, *Chief Financial Officer and Treasurer*
Jasper Cox, *Grants Manager*
Marsha Ogburn, *Accountant*
Catina Tims, *Accountant*
Jordan Merker, *Staff Associate, Accounts Payable*

OFFICE OF FOOD, AGRICULTURE, & NATURAL RESOURCES

Doug Steele, Ph.D., *Vice President, Food, Agriculture, and Natural Resources*
Richard M. Klemme, Ph.D., *Executive Director, Cooperative Extension*
Eddie G. Gouge, *Senior Director, Food and Agricultural Sciences and Executive Director, Council for Agricultural Research, Extension, and Teaching (CARET) and the Board on Human Sciences*
Wendy Fink, *Director of Food, Agriculture & Natural Resources and Executive Director of the BAA Academic Programs Section*
Sandy Ruble, *Assistant Director, Cooperative Extension/ECOP*
Suzette Robinson, *Program Assistant, Food, Agriculture & Natural Resources*

OFFICE OF INFORMATION TECHNOLOGY

Henry M. Wong, *Director, Information Technology*
Denis Garcia, *Associate Network Administrator*

OFFICE OF INTERNATIONAL PROGRAMS

Montague Demment, Ph.D., *Vice President, International Programs*
Anne-Claire Hervy, *Associate Vice President for International Development and Programs*
Susan Johnson, *Associate Vice President, International Programs*

OFFICE OF PUBLIC AFFAIRS

Jeff Lieberman, *Senior Vice President, Public Affairs and Chief Strategy Officer*
David Edelson, *Director, Public Affairs*
Mike Brost, *Assistant Director, Public Affairs*
Allie Maniglia, *Associate, Public Affairs*

OFFICE OF RESEARCH, INNOVATION, & STEM POLICY

Howard Gobstein, *Executive Vice President*
Kacy Redd, Ph.D., *Associate Vice President, Research & STEM Education*
Jessica Bennett, Ph.D., *Assistant Director, STEM Education*
Bethany Johns, Ph.D., *Assistant Director, Research Policy*
Robin Parent, *Assistant Director, STEM Education*
Tia Freelove Kirk, *Program Coordinator, Office of Research, Innovation, & STEM Policy*
Justine Joo, *Project Associate, Aspire Alliance*

OFFICE OF URBAN INITIATIVES

Shari Garmise, Ph.D., *Senior Vice President, USU/APLU Office of Urban Initiatives*
Shannon Looney, *Deputy Director, USU/APLU Office of Urban Initiatives*
Christel Perkins, Ed.D., *Assistant Director, USU/APLU Office of Urban Initiatives*
Andréa Rodriguez, *Assistant Director, USU/APLU Office of Urban Initiatives*
Lynn Brabender, *Assistant Director, USU/APLU Office of Urban Initiatives*
Adrianne Thomas, *Staff Associate, USU/APLU Office of Urban Initiatives*

CENTER FOR PUBLIC UNIVERSITY TRANSFORMATION

Julia Michaels, *Executive Director, APLU Center for Public University Transformation*
Amy Cole-Smith, *Assistant Director, Center for Public University Transformation*
Melissa Rivas, *Program Manager, Center for Public University Transformation*
Kate Michaels, *Program Coordinator, Center for Public University Transformation*

Harvesting the Limitless Energy of Graphene



Paul Thibado, Physics Professor
Invented a device to tap energy
from graphene



UNIVERSITY OF
ARKANSAS®

arkansas.edu

FUTURE ANNUAL MEETING DATES

2020



NOVEMBER
8-10

HILTON ORLANDO
ORLANDO, FL

2021



NOVEMBER
14-16

PHILADELPHIA MARRIOTT
DOWNTOWN
PHILADELPHIA, PA

2022



NOVEMBER
6-8

HYATT REGENCY DENVER
CONVENTION CENTER
DENVER, CO

2023



NOVEMBER
12-14

HYATT REGENCY SEATTLE
SEATTLE, WA

NOTES



Welcome to San Diego

Utilize the Best Talent

The **Registry**®

YOUR SOURCE
for Interim Leadership in
APLU INSTITUTIONS



WWW.REGISTRYINTERIM.COM

3 CENTENNIAL DRIVE, PEABODY, MA 01960

PHONE: (978) 532-4090

INFO@REGISTRYINTERIM.COM



ASSOCIATION OF
PUBLIC &
LAND-GRANT
UNIVERSITIES

1307 New York Avenue, NW, Suite 400
Washington, DC 20005
202-478-6040 • www.aplu.org



#APLU2019
@APLU_News

Will you be in the
dark when you're
forced into the
spotlight?

Learn why **over 100**
universities – including
35+ R1 institutions –
trust BioRAFT to
increase lab safety
compliance

bioraft.com/VPR



BIORAFT
Laboratory Risk Management. Simplified.