

Lessons Learned at the University of Minnesota

Meredith McQuaid

*Associate Vice President and Dean
International Programs*

About the U of M



5 campuses



67,000+ students



GPS Alliance

Student Mobility



STUDY ABROAD:

- 30% participation
- Curriculum Integration
- #6 in Open Doors

INT'L STUDENTS:

- 9% of undergrads
- 24% of grads
- #17 in Open Doors

Global competency for all

Globally competent University of Minnesota faculty, staff, and students will demonstrate the skills, knowledge, and perspectives necessary to understand the world and work effectively to improve it.

This definition was created from responses to the question, "What does global competency mean to you?," posed to participants at the 2010 Internationalizing the Curriculum and Campus Conference.

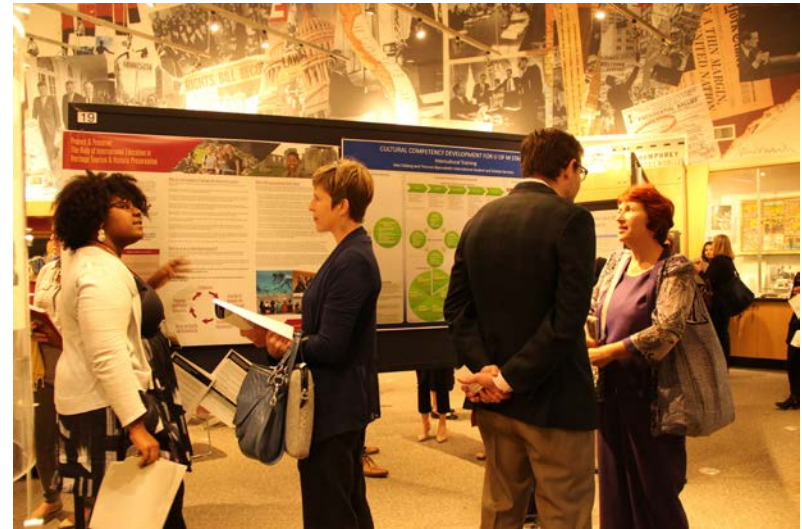
obal.umn.edu/icc

GPSAlliance
UNIVERSITY OF MINNESOTA

Internationalizing the Curriculum and Campus

“One department alone cannot do this work, nor can one initiative or program. It is the sum of the many experiences our students will have while they are on our campuses that matter.”

— Provost Karen Hanson



Research on Integration

Study of the Educational Impact of International Students in Campus Internationalization at the University of Minnesota
 Phase One - Focus Groups and Interviews Over-arching Report on Phase One Findings

Report By **Diana Yefanova, Linnae Baird and Mary Lynn Montgomery**
 Principal Investigators: Diana Yefanova, Gayle Woodruff, Barbara Kappeler, and Chris Johnstone
 Study Number: 1512E16644
 February 2015

Seeking Best Practices for Integrating International and Domestic Students

Research and analysis by **Nancy E. Young | Intercultural Interaction**
 University of Minnesota Advisory Group: Barbara Kappeler, Gayle Woodruff, Alisha Eland, Beth Isensee, Diana Yefanova, and Xi Yu
 June 19, 2014

UNDERGRADUATE STUDENT SUMMARY
 Fall 2014 International Student Barometer (ISB)

Overview
 The University of Minnesota participated in the ISB in 2014 as the second year in row. In order to better understand how the University of Minnesota compares, the UMN's results are presented here in comparison to CIC institutions who participated this year, consisting of University of Minnesota, Twin Cities; University of Nebraska-Lincoln; Northwestern University; Rutgers University; University of Illinois, Urbana-Champaign; and Indiana University-Bloomington.

ISB Response Rate	Response	Population	Response Rate
Minnesota	2,648	5,785	
CIC	9,866		
USA	23,893		
Global	164,866		

UWIN Undergraduate (UG) Student Sample

UG Respondents by College

College	Percentage
CLA	42%
CSE	22%
CSOM	11%
Others	20%
CPANS	5%

STUDENT VOICES
 A Survey of International Undergraduate Students' First-Year Challenges at the University of Minnesota - Twin Cities

Publication Date, 2012

Seeking Best Practices for Career Services to International Students

Research and report by **Soo Kyung Lee**
 Principle Investigator: Alisha Eland
 Research Team: Alisha Eland, Soo Kyung Lee, and Yuki Rowland
 (International Student and Scholar Services)
 May 2012

ISSS
 International Student & Scholar Services
 UNIVERSITY OF MINNESOTA



Study Abroad Innovations



Diversity
Abroad

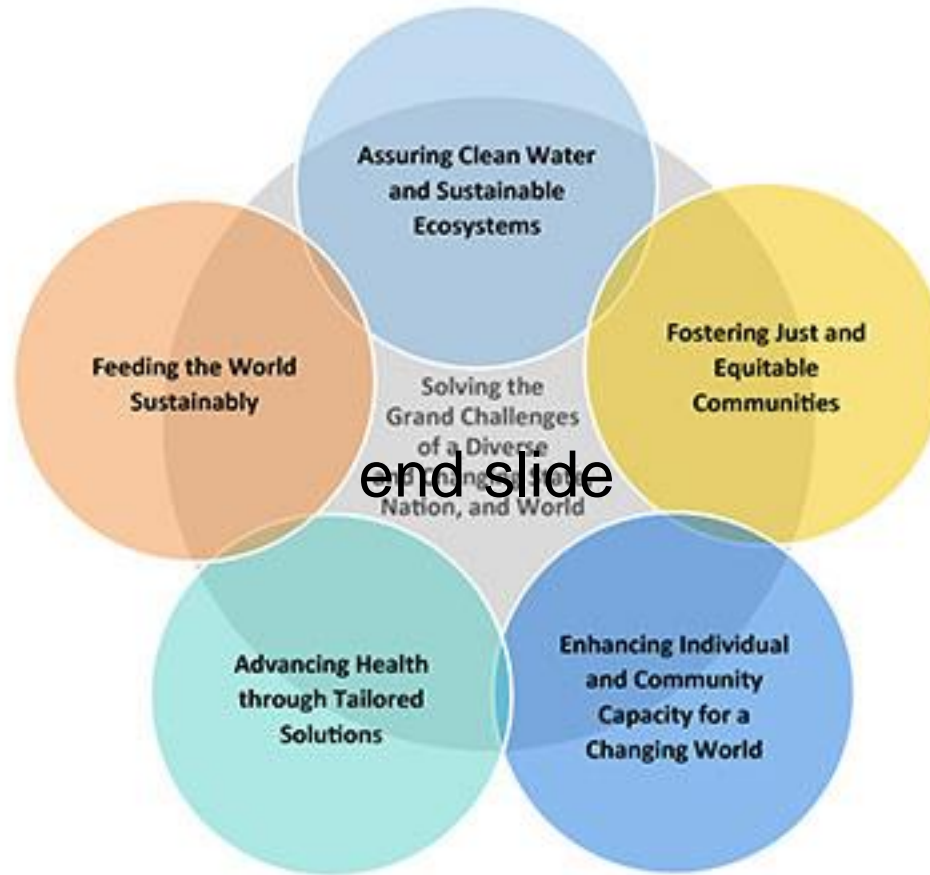


College
Liaisons



Career
Integration

Enhancing Research





UNIVERSITY OF MINNESOTA

Driven to DiscoverSM

umn.edu

Crookston | Duluth | Morris | Rochester | Twin Cities

©2016 Regents of the University of Minnesota. All rights reserved.
The University of Minnesota is an equal opportunity educator and employer.

10

Global Programs
& Strategy **Alliance**



UNIVERSITY OF MINNESOTA