



PUBLIC IMPACT RESEARCH REPORT LAUNCH

Monday, November 11, 2019
APLU Annual Meeting
Aqua (Salon) ABCD (3rd Floor)

Public Impact Research Report

18 months of effort involving 70 individuals representing more than 50 universities.

Developing a vision and framework for university *research that consciously improves lives and serves society – locally, regionally, nationally, and globally.*

#PublicImpactResearch
www.aplu.org/PIR



Why Now?

- **An opportune time for such research**
Critically important problems require the best and combined efforts of universities, local communities, public sector and private sector and NGO partners
- **An opportune time to frame the wide variety of such efforts under a common rubric**
Diminishing public trust in universities requires that we do a better job of articulating and demonstrating the unique leadership we bring to mitigating these national and global challenges

Call to Action: Five Steps

1. Adopt the overarching term "Public Impact Research" (PIR).
2. Conduct PIR more purposefully.
3. Engage stakeholders in PIR activities.
4. Communicate about PIR to all stakeholders.
5. Build specific and structures to encourage PIR.

With Thanks To...

PIR LEADERSHIP TEAM

Angela Phillips Diaz, UC
San Diego

Robin Kaler, University of
Illinois Urbana-Champaign

Sarah Rovito, APLU

Ali Eshraghi, UC San Diego

Sheila Martin, APLU

Neil Sharkey, Penn State
University

Howard Gobstein, APLU

Sherine Obare, Western
Michigan University

Scott Slovic, University of
Idaho

Janet Nelson, University
of Idaho

Jim Reecy, Iowa State
University

PIR Working Group Members

Lynn White Blanchard , UNC	Richard Galbraith , Univ. of Vermont	Terri Goss Kinzy* , Western Michigan U	Janet Nelson , U. of Idaho	Karin Scarpinato , Florida Atlantic U.	Kate Stoll , MIT
Leslie Boney , NC State	Jennifer Lyon Gardner* , UT Austin	Liz Klonoff , U. of Central Florida	Sarah Nusser , Iowa State University	Tim Schroeder , U. of New Mexico	Jane Strasser , U. of Cincinnati
Chris Brown , U. A. Birmingham	Kevin Gardner , Univ. of New Hampshire	Alicia Knoedler , U. of Oklahoma	Grace O'Sullivan , Arizona State U.	Ed Seidel , Univ. of Illinois	Rodolfo Torres , U. of Kansas
Frank Calzonetti , Univ. of Toledo	Faith Kirkham Hawkins* , Indiana U.	Jennifer Krivackas , U. of Cincinnati	Michael Ogawa , Bowling Green State	Kenneth Sewell* , Oklahoma State U.	KT Valsaraj , Louisiana State U.
David Conover* , University of Oregon	Trish Henning , Univ. of New Mexico	Adriana Kuiper , Arizona State U.	Michelle Popowitz , UCLA	David Shaw , Mississippi State U.	Ron Van Den Bussche , Oklahoma State U.
Rena Cotsones , Northern Illinois U.	Joe Heppert , Texas Tech	Julie Lenzer , U. of Maryland	Ram Ramasubramanian , UVA	Terri Shelton , UNC Greensboro	Roger Wakimoto* , UCLA
Brian Darmody , U. Maryland	Robin Kaler , UI Urbana-Champaign	Pat Limbach , U. of Cincinnati	Guru Rao , Iowa State U.	Elizabeth Simmons , UC San Diego	Janet Weisenberger , The Ohio State U.
Duane Dimos , UT Arlington	Chris Keane* , Washington State U.	Theresa Mayer , Virginia Tech U.	AR Razdan , U. of Delaware	Brooke Smith , Kavli Foundation	Gillian Wilson , UC Riverside
Melissa Edward , UI Urbana-Champaign	Colleen Kerr* , Washington State U.	Dawn Mellion-Patin , Southern University	Julie Risien* , Oregon State U.	Marshall Stewart , U. of Missouri	
Faye Farmer , Arizona State U.	Pramod Khargonekar , UC Irvine	William Miller , U. Mass, Amherst	Paul Roben* , UC San Diego	Ashley Stokes , Colorado State U.	*Working Group co-leads

Additional Reviewers

Kristen Adams, Cornell University

Deandra Beck, Michigan State U.

Glynda Becker, Washington State

Michael Benedik, Texas A&M U.

Tony Gibson, Univ. of Pittsburgh

Anne-Claire Hervy, APLU

John Latini, Penn State

Philip Lippel, MIT

Sophia Magill, Iowa State U.

Meredith McQuaid, U. of Minnesota

Joanna Regulska, UC Davis

Doug Steele, APLU

Janet Weisenberger, The Ohio State University

Amanda Wintersteen, Penn State

Chad E. Wooten, Texas A&M

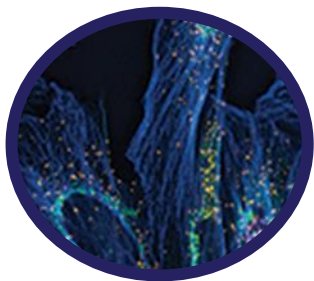
... and all of you who are engaged in Public Impact Research in your institutions

Panelists

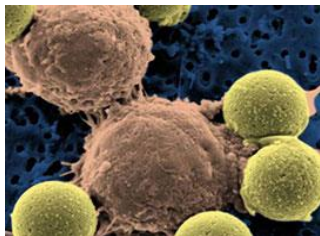
- **Abhijit Afzalpurkar**
Director, Innovation Partnerships, Life Sciences, Thermo Fisher
- **David Graham**
Chief Innovation Officer, City of Carlsbad, Carlsbad, CA
- **Robin Kaler**
Associate Chancellor for Public Affairs, University of Illinois Urbana-Champaign
- **Gabriel Lopez**
Vice President for Research, University of New Mexico

Abhijit Afzalpurkar, Innovation Partnerships

Life Sciences Solutions



- **University of Pittsburgh** - Pharmacogenomics Center for Excellence
- **University Hospital Basel** - Companion Dx
- **University of Connecticut** - Advanced Microscopy & Materials Analysis



- **Dynabeads® CD3/CD28 CTS™** - T cell isolation, activation and expansion
- Used in the **first FDA-approved cell therapy** for leukemia

Dana Farber Cancer Institute

Fred Hustchinson Cancer Center

University of Michigan

US Department of Navy



“We are stronger when we speak as one.”

Framing Public Impact Research...

- connects the dots between our work and better lives for everyone
 - leverages our collective voice
 - builds trust and good will with key stakeholders
-

What we need from APLU members...

- weave PIR into work you already do
- be thoughtful about ways to increase PIR at your institution
- be strategic about identifying PIR when you speak about it
- invest resources as you are able



THE UNIVERSITY OF NEW MEXICO
IS A PREMIER MINORITY-MAJORITY
R1 FLAGSHIP UNIVERSITY



Gabriel Lopez
Vice President for Research
University of New Mexico

grandchallenges.unm.edu



Successful
Aging



Substance
Use
Disorders



Sustainable
Water
Resources

Grand Challenges



Call to Action: Five Steps

1. Adopt the overarching term "Public Impact Research" (PIR).
2. Conduct PIR more purposefully.
3. Engage stakeholders in PIR activities.
4. Communicate about PIR to all stakeholders.
5. Build specific policies and structures to encourage PIR.