

Preparing to Accelerate Public Access to Research Data

Work in Progress since the October 2018 Workshop

Greg Madden

Senior Advisor for Research Computing and Cyberinfrastructure

Penn State University



PennState

Activities

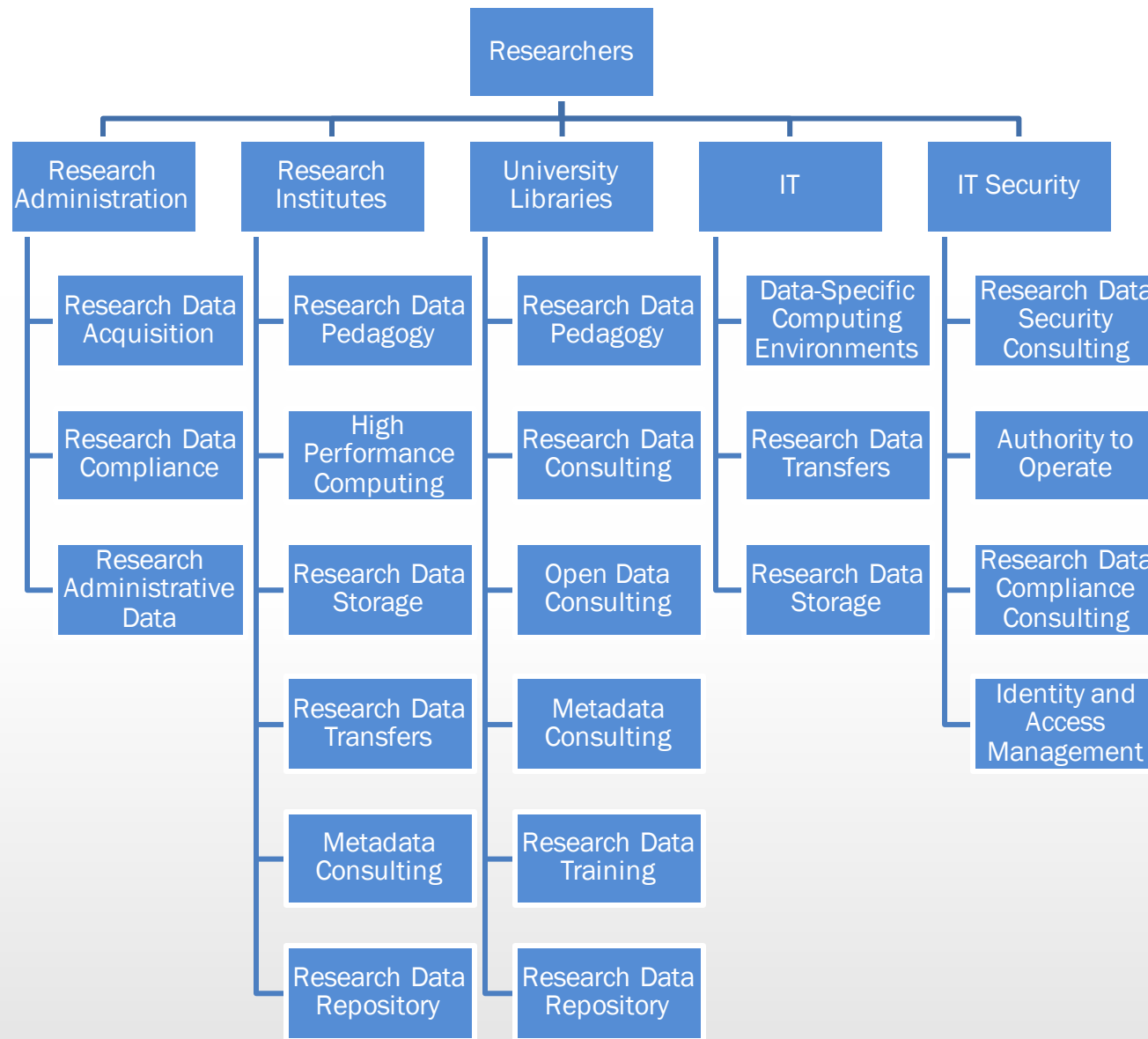
- Understanding the Research Data Ecosystem
- Foregrounding Considerations around Faculty Burden
- Strengthening Existing Collaborations and Initiating New Collaborations
- Moving to Action

Understanding the Research Data Ecosystem

Services Provided to Researchers

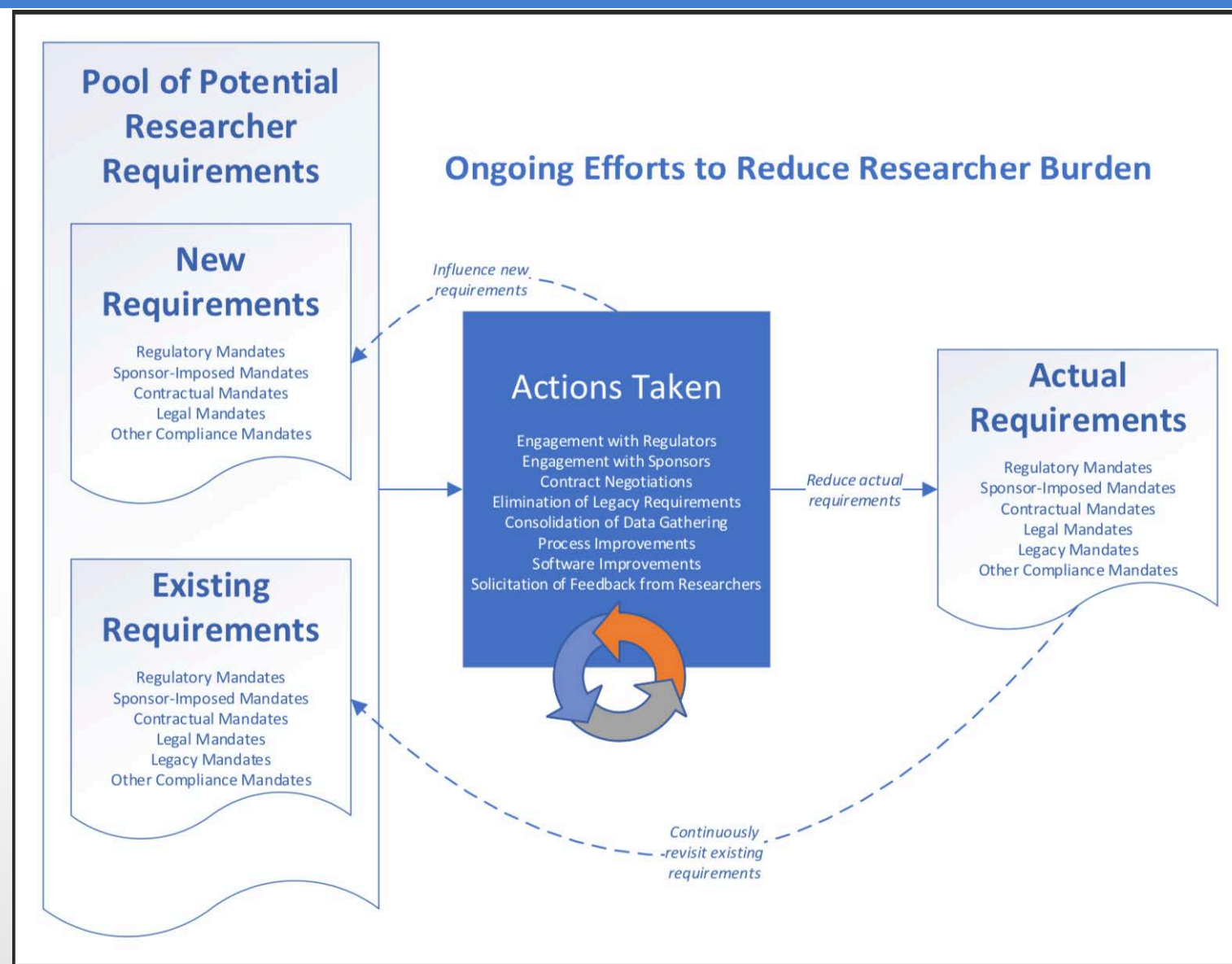
Emphasizing the importance of cross-institutional cooperation in addressing issues surrounding research data

This is not an organization chart, but a “Who Provides Services to Whom” chart



Faculty Burden Reduction

- Faculty Burden Reduction Committee
 - Initiated in Spring 2019
 - Continuation of long-existing initiatives
 - Formalizing the approach to reporting on and reducing faculty burden
 - Focused on all administrative burdens, not exclusively on research data
 - Serves to remind us to be cautious of new mandates



Collaborations (1) – Consolidation of Data Gathering

- Preparing the way for a common interface (“the unicorn”) that brings together...
- Faculty Activity Tracking System (University Libraries)
- Institutional Scholarship Repository (University Libraries)
- Grant Submissions System (Office of Research Information Systems)
- Research Compliance Systems (Office of Research Information Systems)
- University Research Activities Systems (Office of Research Communications and Analytics)
- Institutional Data Repository (Institutes of Energy and the Environment)
- Others as identified along the way

- Giant step towards reducing faculty burden

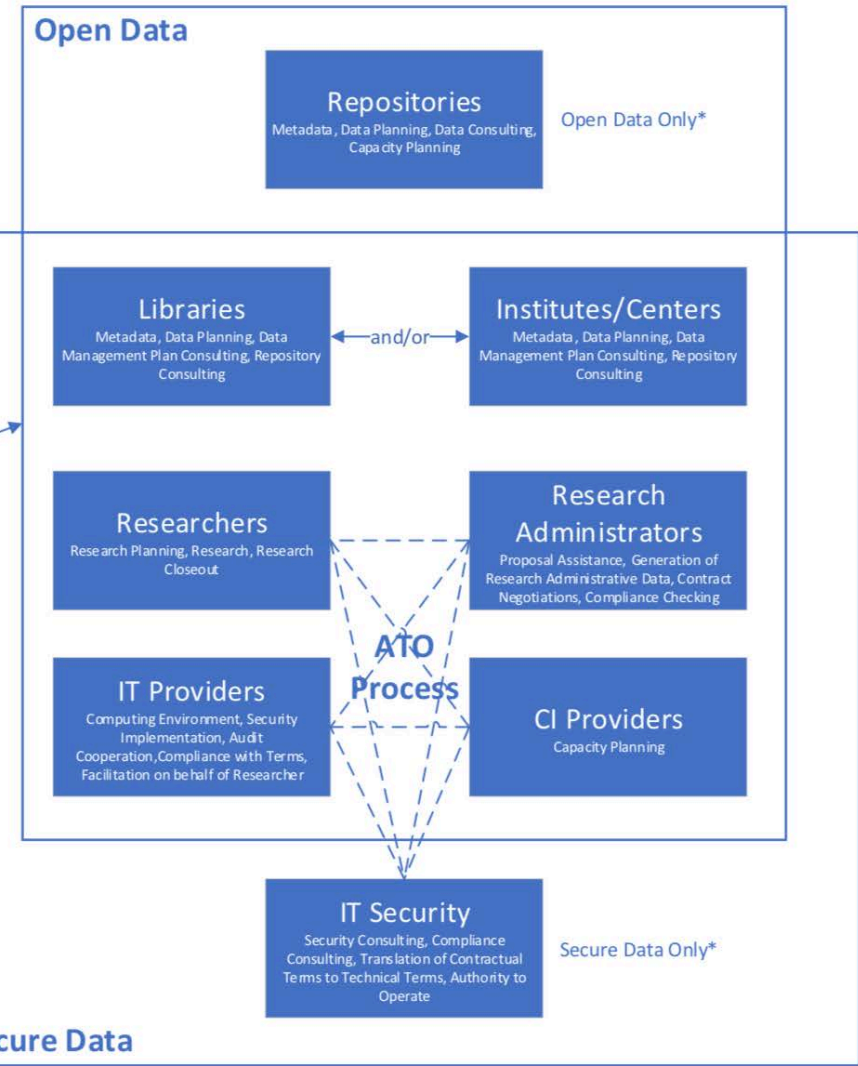
Collaborations (2) – Shared Framework for Open, Secure, and Administrative Research Data

- Recognizing that open data services and secure data services are largely provided by the same groups on campus
- Developing processes and workflows that span these groups

Integrated Approach to Research Data
Using Research Administrative Data to initiate processes around Open Data, Secure Data, and Authority to Operate



Open Data
 Secure Data



*in most cases

Penn State University
 March 2019

Moving to Action

- Open Access Policy
 - Passed in Spring 2019 – focused on scholarship, not data, but sets the ground for the future
- Supporting operational improvements of underlying institutional infrastructural elements
 - Planning, funding, improving
 - Particularly around data-specific infrastructures like storage, networking, data transfer tools
- Engaging with Broader Activities at Intersection of Research and Infrastructure
 - Eastern Regional Network (enabling data sharing, data transfer, computational sharing)
 - National Research Platform (enabling data transfer; DMZ of DMZs)
- Participating actively in, e.g., AAU, APLU, and ARL activities around Public Access to Research Data

Thank You

- Questions?
- Greg Madden, gregmadden@psu.edu