



Beyond China & India: Engaging Indonesia

CII Summer Meeting, UT San Antonio
Tuesday, June 18, 2024



Presenters



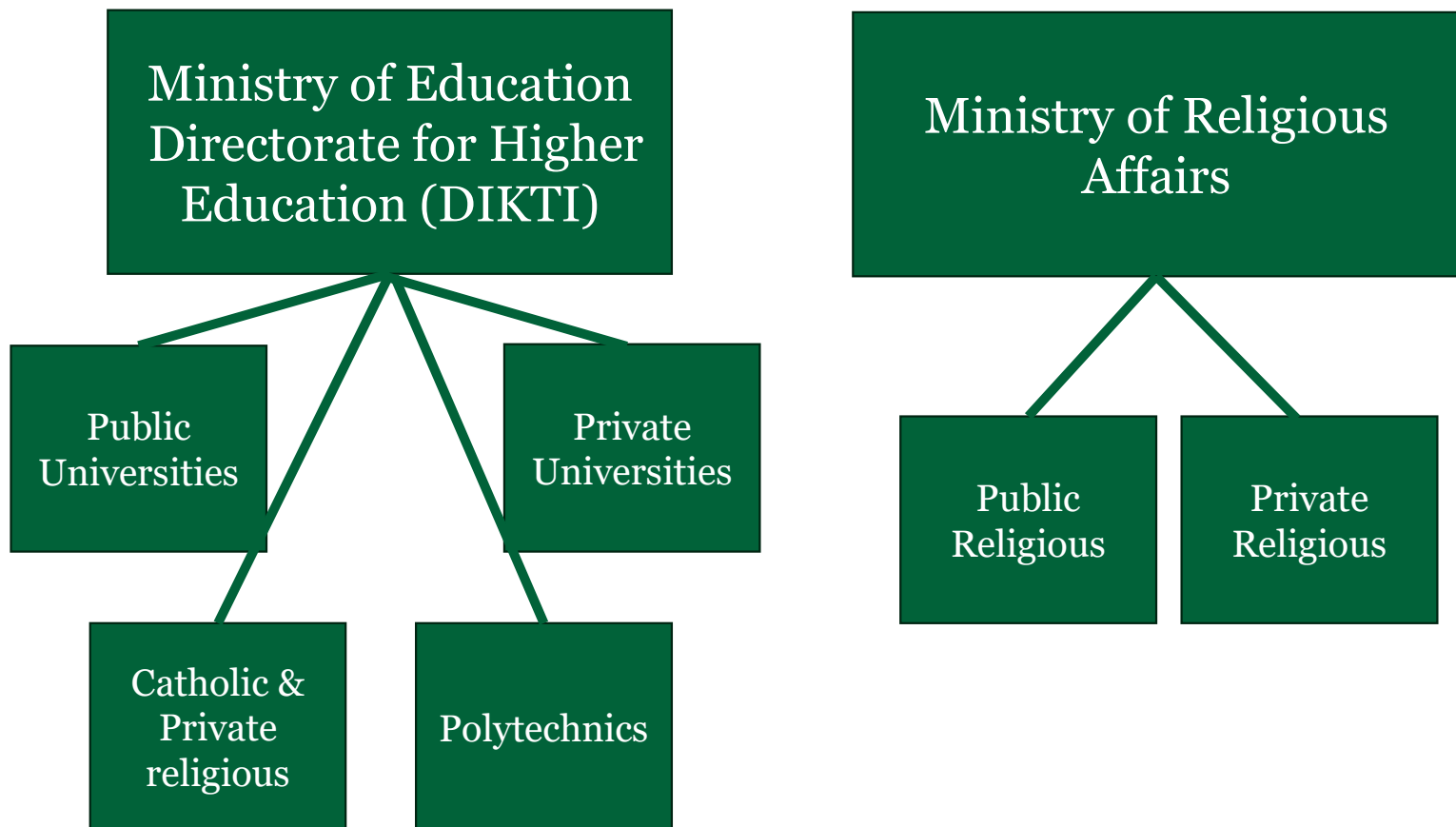
- Bernie Burrola, APLU
- Randy Kluver, Oklahoma State University

Why Indonesia?

- 4th most populous country
- 10th largest economy – Upper Middle Income
- Largest economy in Southeast Asia
- US & Indonesian government funding & programs for higher education
- High visa rate
- Australian policies



Understanding Indonesian Higher Education





Statistics of higher education



HE Institutions
4,670



Study Programs
34,171



Lecturers
286,081



Active Students
8,043,480

| Institution | Number | % | Student body |
|---------------------------|--------------|------------|------------------|
| University | 581 | 12,44 | 5,235,327 |
| Institute | 214 | 4,58 | 618,749 |
| School of Higher Learning | 2,525 | 54,07 | 1,577,807 |
| Academy | 1,054 | 22,57 | 244,293 |
| Community College | 19 | 0,41 | 1,837 |
| Polytechnics | 277 | 5,93 | 365,557 |
| TOTAL | 4,670 | 100 | 8,043,480 |

Concentration of Universities



70+ years of enrollment data

Indonesian Students to the United States

1949-2022



Key Opportunities



- Higher Education Partnerships Initiative – HEPI
- Ministry of Education Initiatives
 - Kampus Merdeka
 - IISMA: Indonesian Int'l Student Mobility Awards
- Ministry of Finance funding

HEPI: Higher Education Partnerships Initiative



- USAID funded, Administered by Arizona State
- Strengthen US/Indonesian partnerships in STEM fields (including medical fields)
 - Curricular development
 - Accreditation
 - Facilitate course credit recognition (education pathways to receive a world-class education)

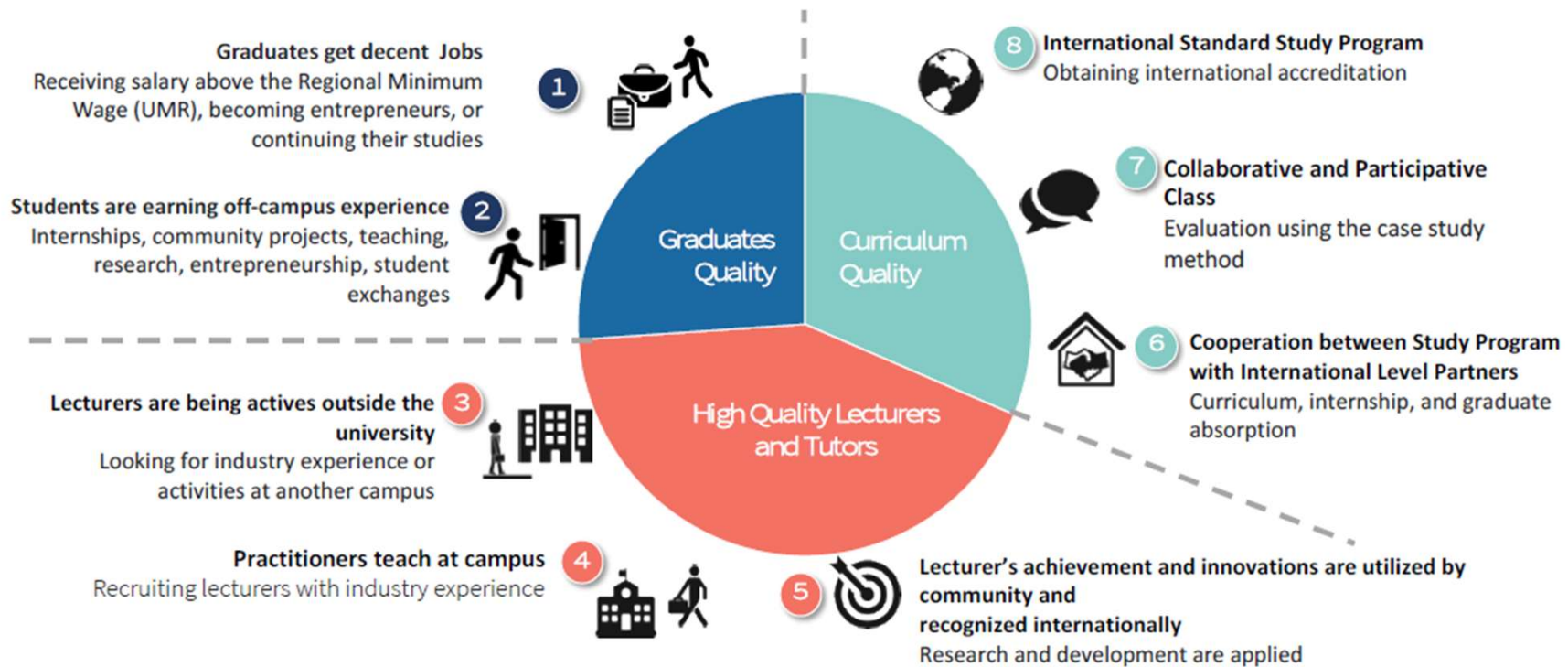
What HEPI does for US institutions



- Facilitate online seminars featuring university programs
- STEMCON event to build HE partnerships
- Partner introduction/vetting to facilitate productive partnerships
- On the ground assistance with delegations or partner visits

HIGHER EDUCATION TRANSFORMATION

8 Key Performance Indicators





Collaboration Opportunities

**Kampus
Merdeka**
INDONESIA JAYA



University
Consortium



Joint Research and
Publication



Curriculum
Development



Student and Staff
Exchange



Internship in
Industry



Scholarship



Sabbatical leave
for Professors



Welcome World
Class University



Online Learning Development During and
Post Covid-19





THIS AWARD COVERS



REGISTRATION
& TUITION FEE
at cost



SETTLEMENT & LIVING ALLOWANCE
(INCLUDE ACCOMODATION)
Lump sum



EMERGENCY
FUND
at cost



ECONOMY AIRFARE
& VISA
at cost



PCR, QUARANTINE &
HEALTH INSURANCE
(COVER COVID)
at cost



REQUIREMENTS (STUDENTS)

01

ACTIVE UNDERGRADUATE STUDENTS

- Semester 4-6 students under DGHERT
- Indonesian Citizen

GOOD ENGLISH PROFICIENCY

Minimum score:

IELTS (6.0) / TOEFL iBT (78) / Duolingo (100)

02

03

NOMINATED BY HOME UNIVERSITY

- Nominated by each home university

GPA MINIMUM 3.0

Minimum GPA of 3.0 (out of 4.0), proven by latest academic transcript

04



LPDP Scholarships



- \$6.6 billion endowed scholarship program
- Covers tuition, fees, travel, and living expenses
- Types:
 - Regular
 - PTUD (World's Top Universities)
 - Targeted scholarships
- APLU Group Proposal
 - Cost-share scholarships for any APLU member

LPDP Priorities

- Blue economy
- Green energy
- Digital economy



For consideration



- How to develop cost-share model with Indonesia
- Looking for a group of APLU members (US) interested and open to considering cost-share
- What are the challenges to collaborating as a group to enroll graduate students?
 - Where to find the funding?
 - How to guarantee enrollment? How to get faculties/departments to be interested?



Follow up

- Is your institution interested in considering a cost-share arrangement with LPDP?
- Do you have graduate programs in the priority areas?
- What can you offer as cost-share?
- What can't you offer?