

# APLU

ANNUAL REPORT

# 2024





# Table of Contents

- I. Fostering a Strong Community of Public & Land-Grant University Leaders ..... 3**
  - Council & Commission Activities..... 3
  - Other Related Activities..... 7
  - APLU Annual Meeting ..... 8
  - APLU Awards ..... 9
- II. Federal Policy ..... 13**
  - Federal Funding for Higher Education and Research.....13
  - Science and Research Issues ..... 14
  - Higher Education Policy..... 15
  - Agricultural Policy ..... 17
  - Taxes and Business Policy..... 18
  - Supporting DREAMers and Contributions of International Students and Faculty ..... 18
- III. Driving Student Success ..... 19**
  - Providing Holistic Student Supports..... 19
  - Preparing Students for the Workforce & Post-Collegiate Success..... 20
  - Achieving University Transformation & Systemic Changes ..... 21
- IV. Fostering Public Impact Research & Innovation ..... 23**
- V. Deepening Community and Economic Engagement Locally & Globally ..... 25**
  - Partnering as Economic Engines for Success ..... 25
  - Elevating Engaged Research & Community Partnerships..... 25
  - International Engagement ..... 26
  - 2025 Board of Directors..... 27
  - Offices and Staff ..... 28
  - APLU Members ..... 30
  - Finance Funders and Projects ..... 33
  - About APLU..... 35

FRONT COVER PHOTOS COURTESY OF TEXAS STATE UNIVERSITY (TOP ROW LEFT); WASHINGTON STATE UNIVERSITY (TOP ROW CENTER); UNIVERSITY OF CALIFORNIA (TOP ROW RIGHT); UNIVERSITY OF MARYLAND, BALTIMORE COUNTY (MIDDLE ROW LEFT); UNIVERSITY OF ILLINOIS CHICAGO (MIDDLE ROW CENTER); VIRGINIA TECH (MIDDLE ROW RIGHT); OKLAHOMA STATE UNIVERSITY (BOTTOM ROW LEFT); AUBURN UNIVERSITY (BOTTOM ROW CENTER); SOUTH DAKOTA STATE UNIVERSITY (BOTTOM ROW RIGHT)

PHOTO LEFT COURTESY OF TEXAS STATE UNIVERSITY

BACK COVER PHOTOS COURTESY OF WASHINGTON STATE UNIVERSITY (TOP) AND UNIVERSITY OF ILLINOIS (BOTTOM)



POLYTECHNIC INSTITUTE AND

UT PROSIM

STUDENT FAIR  
SATURDAY, SEPTEMBER 15, 2018  
11:00 AM - 3:00 PM

# From the President

## Dear Friends:

I am pleased to share the Association of Public and Land-grant Universities' 2024 Annual Report.

The past year has presented an array of challenges and opportunities for the public research university community. As a membership organization, APLU's role is working with our membership to magnify the positive impact of our institutions in driving student success; fostering research and innovation to meet societal needs, and deepening community, economic, and international engagement to benefit all.

APLU's convening role is at the heart of achieving these aims. In 2024, more than 3,500 individuals attended APLU's in-person convenings such as council and commission summer meetings and the APLU Annual Meeting. Countless more attended virtual convenings giving institutions access to senior government officials and subject matter experts on a wide array of topics.

As you'll read on the following pages, APLU made progress in 2024 on many issues, including to:

- ▶ Successfully advocate against the proposed outright elimination of Supplemental Educational Opportunity Grants and Federal Work Study, preserving funding for the programs, while building support for Pell Grant increases.
- ▶ Successfully work to pare back proposed steep cuts to federal research agencies, including the National Institutes of Health.
- ▶ Work closely with federal research agencies such as the National Science Foundation and the Department of Energy to advance research security regulations that protect research while preserving an environment that promotes open scientific engagement.
- ▶ Work with the administration and Congress to address the fallout of a botched FAFSA rollout and ensure a smoother FAFSA application process in 2025.
- ▶ Advocate for federal investments in the Farm Bill that would support research infrastructure improvements at public and land-grant colleges of agriculture, fostering practical applications for agricultural technologies, supply chain innovations, and a strong domestic agricultural workforce pipeline.
- ▶ Examine career readiness efforts at several member institutions and share findings from the study while announcing an effort to convene member institutions around career readiness services set to launch next year.



The entire APLU team looks forward to building on the important work already underway at APLU while creating new ways for APLU to deliver value for our members. Although 2024 was an extremely busy year, we know the year ahead promises a host of new challenges and opportunities, including a new administration and Congress, the AI revolution reshaping the education and research landscape, and public skepticism about the value of a college degree.

I am confident the public research university community will collectively rise to the challenges ahead. Every APLU member is a powerful force dedicated to changing and improving lives. Together—learning, sharing, innovating, and advocating through APLU—our public and land-grant universities are an unstoppable force for good.

Sincerely,

**Mark Becker**



PHOTO COURTESY OF INDIANA UNIVERSITY



# I. Fostering a Strong Community of Public & Land-Grant University Leaders

## Council & Commission Activities

APLU's councils, commissions, and boards bring senior public and land-grant university leaders together to share and learn best practices, tackle shared challenges, and work together on ways to effectively address them. APLU staff worked with the leadership of these various groups to host an array of in-person and virtual events, work on various reports and guides for the APLU membership, and much more. Overall, more than 3,500 registrants from APLU member campuses attended in person meetings in 2024.

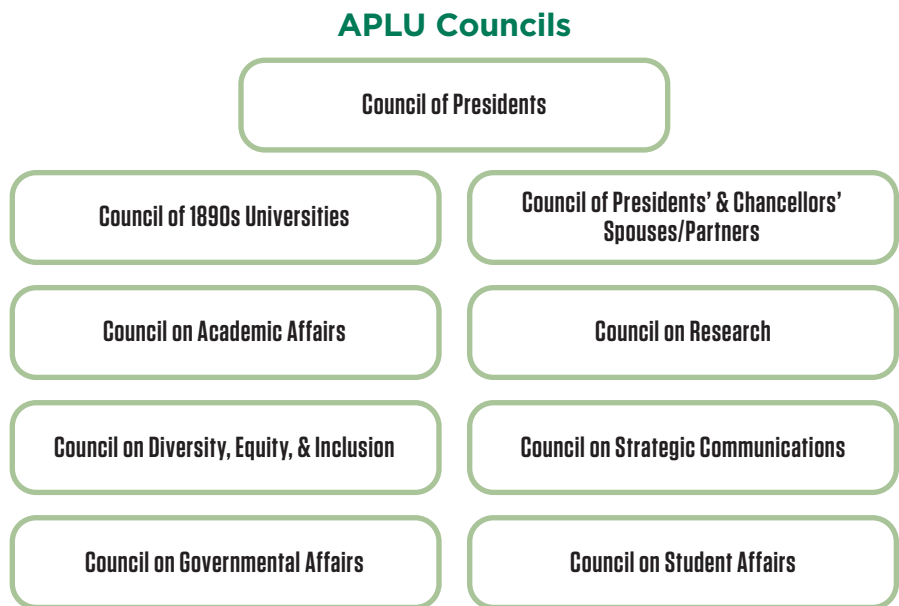
**ON THE WEB:** [www.aplu.org/councils](http://www.aplu.org/councils) or [www.aplu.org/commissions](http://www.aplu.org/commissions)

Below are some of the year's highlights from APLU's councils and commissions:

### Council of Presidents

The Council of Presidents is composed of the chief executives of member universities and systems. Under the organization of the council, chief executive officers develop a working agenda and programs.

APLU's Council of Presidents had two in-person meetings exclusively for university presidents and chancellors to collaborate on pressing issues. At its



summer meeting the agenda focused on discussion of federal policy; campus unrest and free speech; affordability and access; college to career transitions; and more. The presidents/chancellors-only sessions at the APLU Annual Meeting included conversations on the election and its implications on federal policy; strategies for regaining public trust and confidence in public higher education; and an open forum for leaders to discuss shared challenges and opportunities.

### Council of 1890s Universities (C1890s)

C1890 held monthly virtual meetings, inviting representatives from prominent government and

advocacy agencies, including Federal Student Aid, the U.S. Department of Agriculture, and the Thurgood Marshall College Fund. These engagements provided the council opportunities to advance shared priorities and have contributed to fostering stronger partnerships with key stakeholders.

C1890 leadership collaborated extensively with 1890 University Foundation and APLU leadership, culminating in the signing of a Memorandum of Understanding (MOU) between the Foundation and APLU in support of the work of the council. This agreement formally establishes a framework for deeper collaboration and paves the way for impactful joint initiatives.

## Council of Presidents' & Chancellors' Spouses/Partners (CPCSP)

The CPCSP had a robust 2024 APLU Annual Meeting session track in addition to the advent of quarterly webinars throughout the year that included the following topics:

- ▶ “Onboarding” examined how spouses and partners are assisted in the performance of their role and how onboarding could be improved to help the next spouse or partner.
- ▶ “Winning the External Affairs Game: Playbook for President Spouses and Partners” offered strategies for engaging external parties.
- ▶ “Development and Advancement: Maximizing the Role of Spouse and Partner to University Presidents and Chancellors” examined interactions with individual donors.

## Council on Academic Affairs (CAA)

- ▶ CAA convened two working groups for provosts – one on workforce-related issues and the other on AI.
- ▶ CAA held multiple virtual conversations and an in-person summer meeting. It also hosted annual meeting sessions on a variety of

topics, including challenges to academic freedom and the politicization of the academic mission; navigating campus protests and supporting constructive dialogue on contentious topics; civic dialogue during election season; the changing nature of college athletics; and the responsible use of AI in higher education.

## Council on Diversity, Equity, and Inclusion (CDEI)

- ▶ APLU’s Council on Diversity, Equity, and Inclusion explored avenues to meet the needs of APLU’s membership as states and institutions pared back and eliminated their commitments to DEI. There was a series of in-person and virtual meetings throughout the year.

## Council on Governmental Affairs (CGA)

- ▶ APLU’s Council on Governmental Affairs (CGA) held two in person meetings in Washington, DC, a Summer Meeting hosted by the University of Kansas, and over 10 virtual events in 2024. At the summer meeting, APLU continued providing opportunities for state relations professionals to connect with each other to share approaches

on common challenges and opportunities across the states.

- ▶ APLU’s Office of Governmental Affairs regularly offers programming to further issue education amongst APLU’s membership, including a webinar on Title IX compliance following the administration’s release of the new regulation. Additionally, APLU and the CGA help facilitate key engagements between federal policymakers and member institutions, bringing numerous federal agency officials and key congressional lawmakers to council and commission meetings to interact with leaders of public research universities.

## Council on Research (COR)

- ▶ APLU’s Council on Research (COR) continued its webinar series known as *COR Conversations*, specially curated for its members to facilitate in-depth discussions on current events, challenges, and opportunities within the research community. This year, COR hosted six *COR Conversations*, three of which were collaborative with other APLU councils (averaging 100 attendees per event).



PHOTOS COURTESY OF EAST TENNESSEE STATE UNIVERSITY, CLEMSON UNIVERSITY, AND IOWA STATE UNIVERSITY

- ▶ Launched in 2024, COR Mentorship Office Hours successfully hosted four virtual sessions to date. This open forum provides senior research officers with the opportunity to connect, exchange insights, and discuss shared topics of interest. Sessions have featured discussions on managing center-scale awards, navigating compliance, conducting community-based research, and more.
- ▶ The 2024 COR Summer Meeting achieved a record-high registration. The meeting began with the annual New and Aspiring Senior Research Officer Workshop followed by two and a half days of dynamic programming including presentations from NASA, NIST, NSF, and the DOE.
- ▶ Nine new fellows were inducted as part of the seventh class of the COR Research Leader Fellowship Program. Fellows receive training to broaden their skillset in preparation for future positions as senior research officers.
- ▶ COR successfully implemented its NSF-supported Growing Research Access for Nationally Transformative Equity and Diversity Conference at Alabama A&M University in April 2024. The conference brought together over 50 experts on the skills and career paths of senior research officers, and a proceedings report will be distributed in 2025.

### Council on Strategic Communications (CSC)

- ▶ The CSC held by far its most successful summer meeting with record attendance. The meeting featured a session and reception at The Washington Post headquarters with editorial leaders; a visit to the White

House; numerous conversations on addressing protests on campus; and much more.

- ▶ The CSC released a series of playbooks this year designed to provide high-level guidance on topics facing strategic communications leaders on campus. Released this year were:
  - < Onboarding a new president
  - < Preparing for & responding to an active shooter event

**ON THE WEB:** [www.aplu.org/cscplaybooks](http://www.aplu.org/cscplaybooks)

### Council on Student Affairs (CSA)

The CSA is continuing to grow and achieved several firsts' this year:

- ▶ The CSA had its highest attended summer meeting on record and organized its first-ever HBCU pre-meeting.
- ▶ The CSA launched a “CSA Fellows Program.” Mirroring a similar program with the Council of Research, CSA members selected eight assistant vice presidents for student affairs from member institutions to participate in programming traditionally reserved for the vice president of student affairs. This program allows fellows to enhance their skills, expand their expertise, and build connections across institutions and professional organizations with the intent that they will remain active participants when they become a vice president. The yearlong experience begins at the APLU Annual Meeting.
- ▶ CSA convened eight CSA virtual “Huddles” to provide student affairs leaders with the opportunity to connect and discuss specific issues, including free speech on campus,

## APLU Commissions

**Commission on Economic & Community Engagement (CECE)**

**Commission on Food, Environment, and Renewable Resources (CFERR)**

**Commission on Information, Measurement, and Analysis (CIMA)**

**Commission on International Initiatives (CII)**

**Coalition of Urban Serving Universities (USU)**

student protests, student mental health, and much more.

### Commission on Economic and Community Engagement (CECE)

- ▶ For the 25th anniversary of the 1999 Kellogg Report on The Engaged Institution, CECE reviewed the report to identify gaps and areas where updates are needed to support how universities engage their communities. This work will continue in 2025.
- ▶ The CECE Executive Committee formed a working group to review how universities think about tech transfer and how it can spur greater economic engagement and impact in local communities. This work will continue in 2025.
- ▶ The CECE summer meeting in Washington, DC included sessions with the National Governors’ Association, the National League of Cities, the Association of University Research Parks, and the National Science Foundation’s TIP Directorate. APLU also arranged a private meeting with the White

House for the CECE Executive Committee to discuss public universities' role in economic development and community engagement with the Domestic Policy Council.

### **Commission on Information, Measurement and Analysis (CIMA)**

CIMA collaborated with multiple groups to deliver webinars:

- ▶ CIMA's National Association of College and University Business Officers (NACUBO) Advisory Group and APLU's Council on Strategic Communications delivered four town halls about "Reframing the Cost and Value of Higher Education Using Data."
- ▶ CIMA and APLU's Council on Student Affairs delivered webinars on "AI Empowered Student Engagement and Success." Topics include an overview of AI in higher ed, use cases from leading institutions, and implementation of best practices.
- ▶ CIMA and the APLU Council on Research hosted a webinar "2025 Carnegie Classification Updates and the Impact on APLU Institutions."

### **Commission on International Initiatives (CII)**

- ▶ CII convened senior international officers and a delegation from Mexico at its summer meeting held at The University of Texas at San Antonio. The two-day meeting explored a range of topics including hearing from the NSF on research security, sessions on emerging countries for international students, and forging greater ties between universities across North America.
- ▶ CII centered its work throughout the year in two key areas to demonstrate

how greater global engagement advances the public university mission:

1. Producing working documents to demonstrate how greater global engagement supports and advances student success, economic development, and research at our public universities. Six working groups met monthly to identify and develop areas where global engagement strengthens the mission of the public universities. Representatives from various APLU councils and commissions were engaged in the work.
2. To commemorate the 10th anniversary of APLU becoming a North American higher education association, CII devoted greater time at its summer meeting and the APLU Annual Meeting to host sessions centered on the North American Zone of Knowledge.

### **Commission on Food, Environment, & Renewable Resources (CFERR)**

The Commission on Food, Environment, and Renewable Resources focuses on broad cross-cutting issues related to agriculture, food, fiber, health and human sciences, natural resources (ecology, fish and wildlife, forestry, mineral resources and water resources), oceans, atmosphere, climate and veterinary medicine in the functional areas of research, extension and teaching.

#### **Decadal Visioning**

CFERR's Board on Agriculture Assembly began developing a decadal approach that provide long-term growth targets with increased funding

through the annual appropriations process. The strategy recognizes agriculture's critical role in addressing challenges such as improving environmental health, water and soil quality, and economic vitality. The BAA envisions a future where American agriculture drives innovation and prosperity at the intersection of food, energy, health, and community.

### **Celebration of Tribal Colleges and Universities**

APLU and CFERR joined Tribal Colleges and Universities in celebrating the 30th anniversary of the Equity in Educational Land-Grant Status Act of 1994, a pivotal moment that established the land-grant status of Tribal Colleges and Universities (TCUs) across the United States. There are 37 Tribal Colleges and Universities with more than 75 sites in the United States. Over half of the 573 federally recognized tribes are represented at TCUs with American Indian students from more than 30 states, including 14 states that do not have their own TCU.

### **National Impact Database**

In 2024, the BAA expanded its efforts to showcase the collective impact of the land-grant system through the National Impact Database (NIDB), which it began administering in October 2023. This extensive repository has become a vital resource for communicating the system's contributions in research, education, and Extension. Throughout the year, agricultural communicators from 65 institutions submitted impactful materials on critical topics, including food security and national security, rural communities, public health, climate-informed agricultural solutions, AI and emerging technologies, workforce and youth development, agricultural innovation, and water



PHOTOS COURTESY OF MISSISSIPPI STATE UNIVERSITY, SOUTHERN UNIVERSITY AND A&M COLLEGE, BATON ROUGE, AND UNIVERSITY OF CALIFORNIA, LOS ANGELES

management. The database builds on years of collaboration to tell the story of land-grant universities' far-reaching influence.

### **The Board on Health and Human Sciences**

In 2024, the Board on Health and Human Sciences (BHHS) advanced its mission of promoting health, well-being, economic vitality, and maximizing human potential across the lifespan by strengthening interdisciplinary collaboration and integration within the human sciences. Representing senior administrators from public research universities nationwide, the Board made significant strides in addressing critical issues impacting individuals, families, and communities. Through coordinated efforts, BHHS highlighted the unique role of human sciences in tackling complex challenges—such as public health crises, economic disparities, and community resilience—by bringing together diverse perspectives and disciplines.

### **Coalition for Urban Serving Universities (USU)**

- ▶ USU hosted participants at its summer convening in association with the APLU Council of

Presidents. The program included presentations from USU presidents and chancellors; APLU colleagues in the Office of Government Affairs and Office of Research Policy; and key external partners such as MetroLab and the U.S. Conference of Mayors. The program was anchored by a series of presentations and panels on change leadership and was very highly evaluated by participants.

- ▶ USU launched a webinar series in 2024 and hosted two online events: one in July to support submissions for the U.S. Department of Education Postsecondary Student Success Grant and one in October on utilizing National Survey of Student Engagement data among urban serving institutions.
- ▶ Funded projects administered by USU resulted in three convenings of participating institutions: the Student Experience Project Institute in January for participants from 15 institutions, a convening for the Partnership for Adult Learner Success project in February for representatives from eight participating USU institutions and project partners, and a meeting in March for nine institutions that received of

a Collaborative Opportunity Grant from USU.

## **Other Related Activities**

### **General Counsels**

- ▶ APLU engages an active General Counsels Advisory group that meets monthly virtually to share feedback on federal policy issues, discuss potential impacts of the latest jurisprudence, as well as broadly discuss issues of common concern to general counsels of public research universities. While not a formal council, the group's membership is reflective of the breadth of the full APLU membership, with general counsels from R1, R2 doctoral universities, HBCUs and MSIs, and 1890 and 1862 land-grant institutions.
- ▶ APLU for the first time launched an opportunity for all general counsels of member institutions to participate in the 2024 Annual Meeting. Members had the opportunity to attend a post-meeting continuing legal education workshop that offered credits and opportunities to collaborate on pressing issues confronting general counsels at public research institutions.

## APLU Annual Meeting

The 137th consecutive APLU Annual Meeting was held from November 10–12 in Orlando, Florida, with the theme of Partnerships for Public Purpose. The event drew nearly 1,400 attendees, including presidents, provosts, research vice presidents, deans, and other senior public university leaders. Over the course of three days, attendees engaged in leadership development, networking, and sessions designed to address pressing challenges and opportunities in public higher education.

Plenary sessions at the 2024 APLU Annual Meeting highlighted leadership, politics, and community impact. “From Public Office to Public Higher

Ed” featured university leaders who transitioned from public service sharing strategies for building partnerships with elected officials to advance the mission of public higher education. In “Decision 2024,” *The New York Times* political reporter Astead Herndon analyzed the U.S. election results, exploring their implications for public policy, global leadership, and higher education. Keynote speaker Kay Rawlins, co-founder of Orlando City in Major League Soccer and Senior Vice President of the Orlando Pride, shared insights on leadership, community building, and fostering an inclusive workplace culture.

Other sessions over the meeting's three days tackled key topics such as

strategies to enhance student success; workforce development, and community engagement; supporting students' mental health and well-being; fostering professional development for women and emerging leaders in public higher education; driving regional economic growth through partnerships, federal policy in higher education; and much more.

The program was crafted to ensure attendees left with practical strategies and innovative approaches they could implement to drive progress at their own institutions while cultivating connections that further the public mission of higher education.

**ON THE WEB:** [www.aplu.org/annualmeeting](http://www.aplu.org/annualmeeting)



### APLU 2024 MEETINGS BY THE NUMBERS

**26** in-person meetings

More than **3,500** attendees at in-person APLU meetings

Nearly **1,400** at the APLU Annual Meeting

## APLU Awards

APLU's institutional awards are designed to highlight institution's achievements in community engagement; student success and degree completion; internationalization; innovation and economic prosperity; and public impact research. In addition, the Peter McPherson Lifetime Achievement Award goes to an individual whose career has been dedicated to the service and leadership of public and land-grant universities. This year, the award winners were announced during a special breakfast at the 2024 APLU Annual Meeting.

### 2024 C. Peter Magrath Community Engagement Scholarship Award

In recognition of extraordinary community outreach, East Carolina University (ECU) was awarded the 2024 C. Peter Magrath Community Engagement Scholarship Award. Aiming to address the mental health crisis facing people in rural areas of North Carolina, ECU launched a partnership with Contentnea Health in 2006 that increases access to critical primary

health care and behavioral health services for underserved populations.

The partnership has supported more than 126,000 integrated behavioral health care encounters with patients through primary care clinics, dental clinics, on farms, and in school settings since its inception over 18 years ago. The effort provides behavioral health services on average to 7,000 people each year.

### Degree Completion Award

The APLU Degree Completion Award works to identify, recognize, and reward institutions that employ innovative and evidence-based approaches to improve degree completion while ensuring educational quality. The University of Texas Rio Grande Valley (UTRGV) was named the 2024 winner. Formed from two former universities, UTRGV opened its doors in Fall 2015 with a distributed campus across a three-county region in South Texas' Rio Grande Valley. UTRGV prioritized a holistic student success strategy rooted in a shared responsibility for student success across the institution.

The university created a Graduation Help Desk to provide concierge-like support for students facing barriers to progress toward a degree and graduation. The Graduation Help Desk sparked the creation of the Degree Progress and Graduation Initiatives unit to work across the institution and intervene when students encounter graduation obstacles. These include academic challenges, financial constraints, course availability, denied appeals, and personal issues. To address financial barriers facing students, UTRGV launched the Plus Tuition Advantage grant, covering the cost of tuition and fees for students with unmet need who have a family income of \$125,000 or less.

### International Impact Awards

The APLU Institutional Award for Global Learning, Research, and Engagement recognizes public research universities and their leaders who excel in their efforts to drive an inclusive approach to their global engagement, research, and learning, and measure the impact of these efforts.



*Representatives from East Carolina University accept the 2024 C. Peter Magrath Community Engagement Scholarship Award.*



*Representatives from The University of Texas Rio Grande Valley accept the 2024 Degree Completion Award.*



*University of Florida representatives accept the APLU International Impact Award for Global Teaching and Learning.*

The University of Florida (UF) won the APLU International Impact Award for Global Teaching & Learning, which recognizes innovative and impactful efforts to increase global learning on campus and with partners. UF has advanced a multipronged strategy to significantly expand access to global learning experiences for students in any major and from any socioeconomic background.

San Diego State University (SDSU) won the APLU International Impact Award for Global Engagement in recognition of its exceptional efforts in fostering global connections both on and off campus. SDSU has advanced a variety of international collaborations to help deliver the transformational impact of higher education in Mexico, Eastern Europe, and Micronesia. The university's Oaxaca Center for Mesoamerican Studies in Mexico operates as a hub for education, research opportunities, and public health engagement. For a decade, the university partnered with Tbilisi State University, Ilia State University, and Georgian Technical University to offer bachelor's degrees in critical STEM fields.

### Innovation & Economic Prosperity Universities Awards

APLU's Innovation and Economic Prosperity (IEP) Universities program is the leading certification process recognizing higher education institutions that have demonstrated a sustainable and institutional-level commitment to "economic engagement" or the ways in which universities advance 1) talent and workforce development 2) innovation, entrepreneurship and tech-based economic development and 3) place development via public service, community engagement, outreach and extension. Universities that have earned APLU's IEP University designation qualify for the IEP awards competition world-class leaders in economic engagement.

This year's IEP University Award winners were:

- ▶ **The University of New Mexico** won the IEP Innovation award, recognizing exemplary initiatives spurring innovation, entrepreneurship, and technology-based economic development;

- ▶ **The University of Texas at San Antonio** won the IEP Place award, for exemplary initiatives resulting in social, cultural, or community development;
- ▶ **East Carolina University** won the IEP Talent award, recognizing exemplary initiatives in education and workforce development;
- ▶ **Wayne State University** won the IEP Economic Engagement Connections Award, the top prize in the IEP awards competition, recognizing overall excellence and leveraging across all three award categories.

### Public Impact Research (PIR) Award

The APLU Public Impact Research Award recognizes an APLU member that has implemented one or more impressive Public Impact Research (PIR) efforts that have produced exceptional outcomes. PIR is a broad label to describe how university research improves lives and serves society—locally, regionally, nationally, and globally. PIR is a broad and inclusive term encompassing multi-disciplinary



*San Diego State University representatives accept the APLU International Impact Award for Global Engagement.*



*Wayne State University accepts the IEP Connections Award.*

research, community-engaged research, research grand challenges, research-practice partnerships, participatory research, translational and use-inspired research, co-production, and other approaches.

The University of Montana was the winner of the 2024 PIR Award for its work spearheading Project SELA (Social Emotional Learning in Arlee), a university research practice partnership working to promote mental health on the Flathead Indian Reservation. Born out of the community's desire to address a growing mental health crisis, Project SELA directly responds to the community's needs through a collaborative process to develop and implement a culturally relevant social-emotional learning program in Arlee schools.

The Arlee community has seen many qualitative benefits from the curriculum, including improved social-emotional competencies in children. Because of this impact, the school board has formally integrated the program into the curriculum for grades

K-6. In addition to the impact felt by the community, the researchers published several studies on Project SELA to share best practices and increase the evidence base on improving mental health among tribal communities.

This is particularly significant, given the lack of research on education in Indigenous communities, particularly rural Indigenous communities.

### **Peter McPherson Lifetime Achievement Award**

Harold L. Martin, Sr., Chancellor Emeritus at North Carolina Agricultural and Technical State University, was honored with the Peter McPherson Lifetime Achievement Award. Throughout an extraordinary career, Martin demonstrated an exceptional dedication to advancing student success, research and discovery, and community and economic engagement.

Under Martin's visionary leadership, North Carolina A&T solidified its position as America's top educator of African American STEM graduates. It became nation's largest HBCU in 2014, a position it has held every year

since, and today finds itself on the cusp of attaining R1-Very High Research Activity status in the Carnegie Classifications, having exceeded entry criteria during Martin's final year as chancellor.

Martin's exceptional leadership and dedication have been recognized through numerous honors, including the Thurgood Marshall College Fund's Educational Leader Award, the North Carolina Award – the state's highest honor, which he will receive later this week – and his service on the White House Initiative on Historically Black Colleges and Universities. He also served on the APLU Board of Directors as well as the Board for Food and Agricultural Development, an advisory body appointed by the President of the United States to help promote food security and economic development in the U.S. and abroad

---

**ON THE WEB:** [www.aplu.org/awards](http://www.aplu.org/awards)



*Representatives of the University of Montana accept the 2024 Public Impact Research Award at the APLU Annual Meeting.*



*Harold L. Martin, Sr., (center, back row) accepts the Peter McPherson Lifetime Achievement Award at the 2024 APLU Annual Meeting.*



WYOMING UNION

PHOTO COURTESY OF UNIVERSITY OF WYOMING



## II. Federal Policy

APLU is the voice of public research universities in Washington, defending and advancing members' interests on Capitol Hill and with the administration. As a membership association with institutions in all 50 states that are primary drivers of higher education, employment, and economic development, APLU's collective reach and impact is a special strength among higher education associations.

The association provides unique leadership on the issues core to its membership and develops partnerships aligned with the interests of its members on policy and funding issues. With increased partisan rancor on the Hill, a tight budget environment under caps set by the Fiscal Responsibility Act, and the fallout from campus unrest in the spring and the related congressional hearings, the 2024

environment was deeply challenging. However, APLU remained steadfast in its support of its members to defend and advance interests.

### Federal Funding for Higher Education and Research

Annual Appropriations Process: APLU is deeply engaged in support of public research university priorities in the annual appropriations process, advocating for nearly 50 funding lines across seven appropriations bills. Unfortunately, due to budget caps set under the Fiscal Responsibility Act, for both Fiscal Year 2024 and Fiscal Year 2025, the association is primarily working to prevent steep cuts. APLU maintains leadership positions in numerous advocacy coalitions involving universities, scientific societies,

and industries to bring collective power together in support of common priorities.

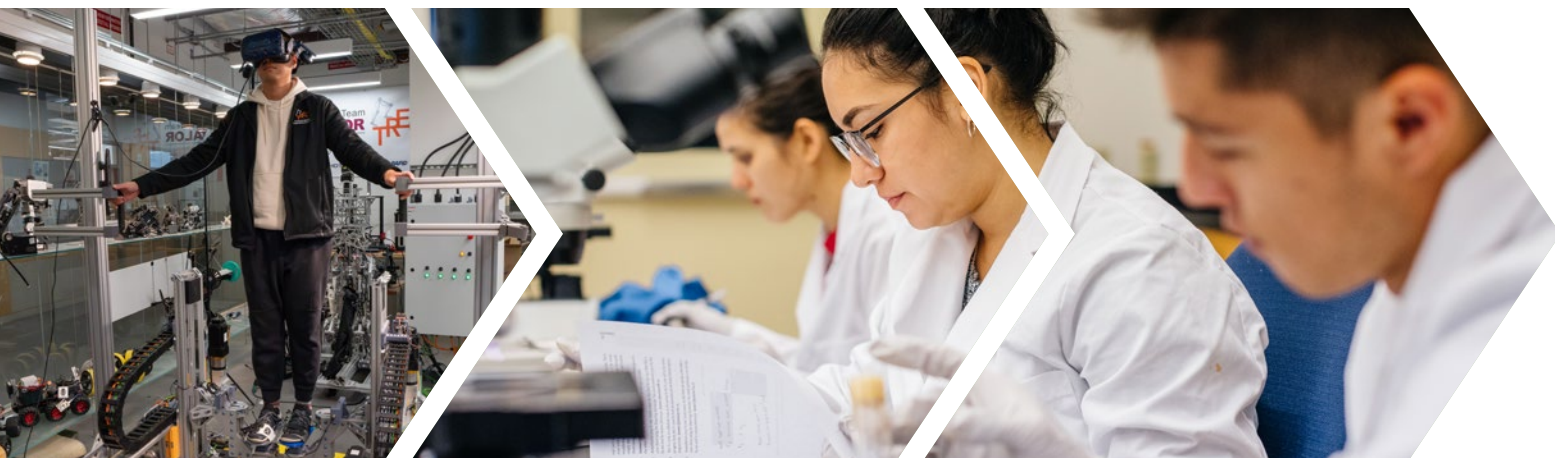
For Fiscal Year 2024, APLU:

- ▶ Successfully advocated against proposed eliminations of Supplemental Educational Opportunity Grants (SEOG) and Federal Work Study (FWS), leading to flat funding.
- ▶ Fought to pare back proposed steep cuts to the National Institutes of Health.
- ▶ Despite the funding environment, secured growth in research funding for the Department of Energy Office of Science and USAID Feed the Future Innovation Labs.

For FY25, Congress enacted a short-term funding resolution until March 14. APLU will continue to work with



PHOTO COURTESY OF UNIVERSITY OF CALIFORNIA



PHOTOS COURTESY OF VIRGINIA TECH AND UNIVERSITY OF CALIFORNIA

member institutions to defend higher education and research under the immensely challenging funding environment.

- ▶ APLU with member institutions secured a new House GOP letter with 30 signers supporting Pell, FWS, and SEOG.
- ▶ APLU staff met with majority and minority House and Senate Appropriations staff responsible for agencies covered in the CHIPS and Science Act to advocate for increased funding for the National Science Foundation (NSF), National Institute of Standards and Technology (NIST), Department of Energy (DOE), and National Aeronautics and Space Agency (NASA).
- ▶ APLU sent a letter urging the House to reject cuts in the bill that funds the Department of Education and National Institutes of Health. With allied organizations, APLU succeeded in stopping the bill from advancing to the House floor.

## Science and Research Issues

Science Regulatory Advocacy: APLU is a leader in policy and advocacy on

federal research regulations. Close collaboration between its Offices of Governmental Affairs and Research Policy contributes to APLU's leadership in responding to significant federal agency and congressional science policy proposals, including:

- ▶ NSF Public Access Plan – January 2024
- ▶ NIST Proposed Framework for the federal use of March-in-Rights – February 2024
- ▶ USDA Public Access Plan – February 2024
- ▶ DOE Conflict of Interest Proposed Policy – August 2024
- ▶ NIH Public Access Plan – August 2024
- ▶ House Energy and Commerce Committee NIH Reorganization Proposal – August 2024
- ▶ NSF Merit Review – September 2024
- ▶ DOD Public Access Plan – November 2024
- ▶ DOJ Proposed Rule on the sale of bulk data – November 2024
- ▶ NSF Research Ethics – December 2024

As an example of just one noteworthy accomplishment, APLU was successful in its advocacy for changes to the U.S. Department of Health and Human Services (DHHS) proposed rule regarding research misconduct investigations, with DHHS accepting many of the association's proposed changes to ensure fair investigations and reduce administrative burden.

Research Security: Research security and competition with "countries of concern" remains of bipartisan interest and an area of intense activity in Washington. APLU consistently advocates for properly scoped security measures that also protect the value of open scientific and academic engagement.

- ▶ APLU is frequently invited to provide subject matter expertise on Capitol Hill and to federal agencies, including research security-related events at the National Academies, the Netherlands Embassy, the Swedish Embassy, and the German Research Foundation.
- ▶ APLU worked closely with the National Science Foundation on implementation of research security provisions from the CHIPS and

Science Act, including proposed regulations and instructions on the new foreign gift and contracting reporting system that came online in the summer of 2024. APLU advocated for clear instructions and definitions to help reduce confusion for campuses reporting in the new portal.

- ▶ At the request of the U.S. Department of Commerce, APLU facilitated a focus group that included several HBCU Senior Research Officers to discuss the impact of proposed research security restrictions on CHIPS-related research funding.
- ▶ APLU met regularly with the U.S. Department of Energy on plans for new research security regulations, which were announced in late November.

### National Defense Authorization Act:

APLU successfully prevented policy proposals to significantly reduce international collaborations, create new conflicting, unnecessary, and counterproductive research security requirements, and inappropriately link university DOD funds with Title VI of the Civil Rights Act violations from being included in the final FY 2025 National Defense Authorization Act.

### Protecting University Intellectual Property:

- ▶ APLU successfully pushed back on a National Institute for Standards and Technology (NIST) proposal on the exercise of federal march-in rights.
- ▶ APLU secured changes in the Invent Here, Make Here Act of 2024, easing compliance challenges on university technology transfer regulations and ensuring licensing of university developed technologies in allied countries is not unduly discouraged.

### Artificial Intelligence (AI) Legislation:

AI promotion and regulation remain a topic of interest across Congress and the administration.

- ▶ APLU engaged with House and Senate committee staff on AI legislation and provided technical feedback on several AI education and research proposals.

APLU held programing for its Council on Research and Council on Academic Affairs focused on the launch on the NSF National Artificial Intelligence Research Resource (NAIRR) to connect members with the program's opportunities. The association supports legislative efforts to fully authorize NAIRR.

## Higher Education Policy

Regulatory Landscape: The U.S. Department of Education (ED) continued an aggressive regulatory agenda with proposals that at times create substantial implementation and resource challenges to public universities, often with imbalance in the benefit versus the burden. APLU engaged the most senior levels of ED on members' regulatory concerns, including:

- ▶ Underscored Gainful Employment and Financial Value Transparency implementation challenges, leading to ED postponing the regulations until February 2025. APLU supported a bipartisan congressional push for the delay.
- ▶ Substantially contributed to broader higher education community efforts to protect innovative online education in regulations on Distance Education and reduce significant undue administrative challenges to institutions.
- ▶ Substantially contributed to pushing back on ED plans to limit institutions' ability to offer online programs across state lines, leading to ED withholding a proposed rule.



PHOTOS COURTESY OF UNIVERSITY OF SOUTH FLORIDA AND WEST VIRGINIA UNIVERSITY

- ▶ Detailed disruption to educational services caused by ED guidance expanding third-party servicer regulations to entities beyond those found in statute. In November, ED rescinded their February 2023 guidance on third-party servicers.

**FAFSA Rollout:** ED rolled out the 2024–25 FAFSA months late, with system failures for students, families, and institutions. Many students in low-income or mixed-status families were unable to receive the aid they were entitled to and gave up on attending college. Throughout the disastrous FAFSA rollout, APLU heard members’ feedback and took action, regularly pressing the Biden administration to get it right and providing forums for member institutions to engage ED.

In addition to actions on the 24–25 FAFSA, APLU:

- ▶ Endorsed the bipartisan FAFSA Deadline Act, which President Biden signed into law. The law requires ED to post the FAFSA by October 1 annually and provide transparency on its timeline and impacts.
- ▶ Endorsed the bipartisan Family Farm and Small Business Exemption Act (S.1237/H.R. 1250)

to restore asset exemptions in need analysis.

- ▶ Helped develop FAFSA recommendations to Congress and pushed for successful inclusion in bipartisan Senate appropriations language.

**Led Opposition on Harmful Higher Education Act Legislation, the College Cost Reduction Act (CCRA):**

In the House Committee on Education & the Workforce, the majority advanced deeply problematic legislation that imposes financial penalties on institutions based on highly-flawed and complex outcomes measures; implements an array of impractical requirements such as maximum total price guarantees that are inconsistent with how public institutions are funded and governed at the state level; eliminates Graduate PLUS loans, among many other concerning provisions.

APLU worked collaboratively with the committee for more than a year on the legislation, providing technical expertise and background information to ameliorate some concerns prior to introduction. Unfortunately though, the bill that advanced in committee was highly problematic

and necessitated the association’s opposition.

Ultimately, the actions of APLU and member institutions successfully blocked the legislation from coming to the House floor in 2024.

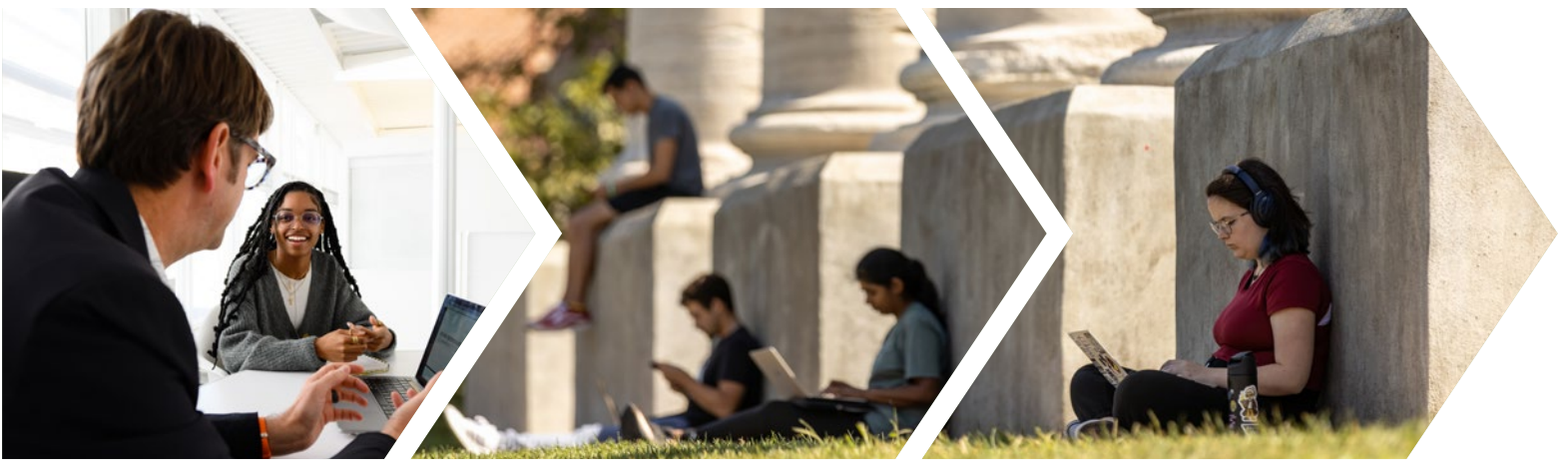
- ▶ Sent a letter to Congress outlining APLU’s specific concerns on the legislation’s harm to public universities and students.
- ▶ Due much in part to APLU’s and members’ advocacy, the committee reversed its proposed elimination of Supplemental Education Opportunity Grants (SEOG) in the bill’s markup.
- ▶ APLU created a CCRA data dashboard as a key resource for member institutions to use in their opposition.

**Veterans Legislation:** Congress continued moving bipartisan bills affecting how institutions serve military-connected students. APLU collected member feedback and worked with committee staff on issues such as:

- ▶ Appropriately scoped outcomes accountability.



PHOTOS COURTESY OF SOUTH DAKOTA STATE UNIVERSITY, NORTHERN ILLINOIS UNIVERSITY, AND THE UNIVERSITY OF MISSISSIPPI



PHOTOS COURTESY OF CLEMSON UNIVERSITY AND UNIVERSITY OF MISSOURI

- ▶ Providing training and support to overworked school certifying officials.
- ▶ Updates to the GI Bill Comparison Tool.
- ▶ Expanding GI Bill eligibility and benefits, including counselors, books, supplies, and housing.

**Hazing Legislation:** APLU collaborated with the House Committee on Education & the Workforce to shape new hazing prevention and reporting legislation, the Stop Campus Hazing Act, H.R. 5646, which passed the House and Senate before being signed into law by President Biden on December 23, 2024. APLU’s engagement with the Committee led to direct changes in the bill to ease compliance burdens and eliminate requirements that could be duplicative of obligations under state law, though some challenges remain.

**Postsecondary Student Success Grants (PSSG):** APLU and the Coalition of Urban Serving Universities led a webinar series, developed an evidence-based practices guide, and showcased members’ successful approaches to student completion. APLU members have won a majority of ED PSSG competitive grants. Five of

the seven recipients of the 2024 PSSG were USU and APLU. In 2024, APLU members achieved legislative and regulatory improvements on eligibility criteria, reductions in administrative burden, while growing bipartisan congressional support to expand the program.

**Federal Encroachment on In-State Tuition Determinations:**

APLU brought together higher education associations representing public four-year institutions and state higher education executive officers to convey to Congress the unacceptable nature of the federal government dictating to states and institutions in-state tuition determinations. The joint letter and Hill engagement followed Congress extending a requirement to citizens of the Freely Associated States through a rider in an appropriations bill.

**End Woke Higher Education Act:**

APLU defended public universities in response to legislative attacks undermining First Amendment jurisprudence and subjecting institutions to increased liability. While the End Woke Higher Education Act, H.R. 3724 passed the House, APLU also engaged the Senate to ensure it lacked support in the upper chamber.

## Agricultural Policy

**Farm Bill Research Facilities Act:** Seeking a new generational federal investment of \$2.5 billion, APLU advocated for the inclusion of the Research Facilities Act in Farm Bill legislation that would allow for research infrastructure improvements at public and land-grant colleges of agriculture in developing and deploying practical applications for agricultural technologies, supply chain innovations, and a reliable pipeline for the domestic agricultural workforce.

The Farm Bill passed out of the House Agriculture Committee included a \$2.5 billion mandatory investment, which equates to \$500 million for the next five years. The Senate Agriculture Committee increased its investment to match the House bill in its version of the Farm Bill. However, Congress could not reconcile differences between the chambers’ versions before the end of the year and had to pass a simple Farm Bill extension rather than a comprehensive reauthorization. APLU’s Board on Agriculture Assembly was also successful in getting all authorizing language for priority programs updated and included in the House and Senate versions of the Farm Bill.

Scoops of Science on Capitol Hill: In June, APLU hosted a special “Scoops of Science” reception to share the joys of university creameries with over 350 congressional staff members. The event featured ice cream, cheese, and other agricultural products from 14 APLU members and was sponsored by the House Committee on Agriculture Chair Glenn “GT” Thompson (R-PA), who at the event emphasized his commitment to funding for agriculture research facilities, a key APLU priority.

## Taxes and Business Policy

In anticipation of an active environment on tax issues in 2025, APLU met with the House Committee on Ways and Means Majority to share preliminary tax priorities for the 119th Congress. APLU engaged key lawmakers to find proactive opportunities to advance priorities while also guarding against threats, such as the extension of an endowment excise tax to public universities.

APLU continued its engagement on the Department of Labor “Overtime Rule,” meeting with the White House Office of Information and Regulatory Affairs to make clear the detrimental impacts of going too far, too quickly on public research universities.



*APLU staff members attend Scoops of Science on Capitol Hill, a reception featuring agricultural products from 14 APLU members to showcase agricultural research.*

- ▶ The U.S. Department of Labor continues to implement the rule, with a second increase to the salary threshold for the white-collar exemption to overtime pay requirements, while litigation is active.

## Supporting DREAMers and Contributions of International Students and Faculty

APLU remained deeply engaged with Congress and the Executive Branch to advance policy that recognizes the contributions of immigrants

and international students to public research universities, the economy, and society.

- ▶ APLU successfully fought to exempt public universities from new fees on H-1B visas.
- ▶ APLU continues to advocate for additional pathways for international student graduates to live and work in the U.S. following graduation.

# III. Driving Student Success

## Providing Holistic Student Supports

The Coalition of Urban Serving Universities (USU) and APLU have continued to support member institutions to improve student sense of belonging and academic outcomes and created ongoing impact with two projects.

### Student Experience Project (SEP) Institute:

The Student Experience Project (SEP) Institute, funded by the Raikes Foundation, continues USU and APLU's success supporting member institutions in establishing faculty communities of practice to improve student experience. The 2024 Institute cohort includes 15 USU and APLU member institutions, which participated in an in-person kickoff event and virtual meetings to facilitate effective use of SEP resources. Since

the launch of the Institute in 2023, participating institutions have engaged nearly 500 instructors in communities of practice, impacting over 10,000 students each year.

**ON THE WEB:** [www.studentexperienceproject.org](http://www.studentexperienceproject.org)

### Graduate TAs as Change Agents for Equitable Student Experience:

With a grant from the Alfred P. Sloan Foundation, and in partnership with Equity Accelerator, the Graduate Teaching Assistants (GTAs) as Change Agents for Equitable Student Experience project engaged the University of New Mexico and the University of Colorado Denver to implement SEP training for GTAs. The Coalition of Urban Serving Universities is also developing a toolkit from the effort to inform the field. Impact of

this project goes beyond the classroom; in Spring 2024, GTAs collaborated to devise a program exit survey, provide parking for GTAs teaching late in the evening, and compile a timeline of the graduate student experience.

### Partnerships for Adult Learner Success (PALS):

PALS is a three-year grant funded by the Lumina Foundation to innovate and build more inclusive, agile, and comprehensive student success pathways and supports for adult learners of color. In 2024, eight participating institutions convened to complete their equity plans and develop avenues to scale and sustain their programs. The success and impact of the PALS work was further amplified through two efforts in 2024.

First, the Coalition of Urban Serving Universities' Urban Adult Learner Institute (UALI) is a virtual, modular



PHOTOS COURTESY OF UNIVERSITY OF MARYLAND, BALTIMORE COUNTY, UNIVERSITY AT BUFFALO, AND UNIVERSITY OF ILLINOIS

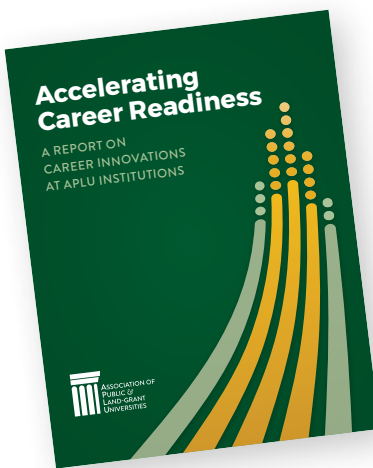
institute and certification opportunity that builds awareness, disseminates best practices, and gathers national momentum in support of undergraduate adult learners. By the fourth quarter of 2024, four UALI participants have earned full certification, and 132 registrants from more than 50 institutions and organizations have engaged with UALI programming. USU also used the success of PALS to launch the Accelerate Pitch Competition, which solicited innovative, research-informed solutions for adult learners at public urban research universities. Five institutions were identified as finalists and their groundbreaking strategies to support adult learners were elevated as models for the field.

**ON THE WEB:** [www.usucoalition.org/uali](http://www.usucoalition.org/uali)

## Preparing Students for the Workforce & Post-Collegiate Success

### Accelerating Career Innovations

**Project:** APLU received a grant through the Strada Education Foundation to survey efforts in advancing career readiness across members institutions. The resulting *Accelerating*



*Career Readiness* briefing, released at the 2024 APLU Annual Meeting, outlines five key domains where APLU institutions are driving innovation in career readiness.

APLU secured a second grant to establish a networked improvement community. It will be launched in January 2025 in partnership with the American Association of State Colleges and Universities (AASCU).

**ON THE WEB:** [www.aplu.org/APLU\\_Accelerating-Career-Readiness](http://www.aplu.org/APLU_Accelerating-Career-Readiness)

### Computer and Information Science and Engineering Status

**Report:** In partnership with the NSF,

APLU launched a dashboard tracking improvements in the quantity and diversity of Computer and Information Science and Engineering (CISE) degree production in higher education from 2013 to 2022. APLU is releasing a *Status Report on CISE Degree Production* and a dashboard overview and primer in 2025.

Planning is also underway for an in-person summit with university and industry in February 2025 to celebrate progress and discuss opportunities for further success.

### Recruiting Graduate Students for Colleges of Agriculture:

**APLU** helped grow AgNGINE, a database for colleges of agriculture and natural resources of juniors, seniors, and masters' students interested in going to graduate school. Students can opt-in to submitting their names and interests into this national database and institutions whose students submit names can then have access to the entered data to recruit students into their master's and Ph.D. programs. In its second year, APLU saw tremendous growth in university and student participation.



PHOTOS COURTESY OF UNIVERSITY OF WYOMING, UNIVERSITY OF MARYLAND, AND THE UNIVERSITY OF TEXAS AT SAN ANTONIO



PHOTOS COURTESY OF THE UNIVERSITY OF MISSISSIPPI, NORTH CAROLINA STATE UNIVERSITY, AND UNIVERSITY OF ILLINOIS

## Achieving University Transformation & Systemic Changes

### Closing Out Powered by Publics:



Powered by Publics wound down in the third quarter of 2024. Over a period of seven years, Powered by Publics supported more than 125 APLU members in projects designed to identify and elevate emergent and promising practices for supporting student success. The initiative was centered around institutional clusters focused on improving teaching and learning, holistic student supports, affordability, and data-informed decision-making.

The team also facilitated cross-cluster collaboration through student roundtables, a financial aid innovations research project, an institutional transformation assessment, and connected involved members to key partnering organizations within the Gates Intermediaries for Scale ecosystem. The team enabled cross-institutional learning and capacity building for APLU members through an online

learning exchange, convenings and webinars, and learning memos.

The Coalition for Urban Serving Universities is currently overseeing the last Powered by Publics project, which is working with six APLU institutions located in urban areas to pilot the Postsecondary Value Commission's Equitable Value Explorer to measure and analyze economic outcomes, empower institutions to achieve their goals, and reshape the narrative around higher education.

### Supporting Indigenous Students at Public and Land-grant

**Institutions:** APLU received a conference grant from the Alfred P. Sloan Foundation to support a workshop that acknowledges the history and scope of Indigenous land dispossession and shares how land-grant and public universities are supporting Native and Indigenous students. APLU launched an RFP for two mini-grants in December 2023. The University of California, Riverside and the University of North Dakota were selected as recipients. UCR focused on integrating undergraduate student experiences while UND focused on graduate student experiences in

Indigenous Health Sciences. Both institutions presented on their work at the 2024 APLU Annual Meeting. The grant concluded in December with a final report and continued curation of the website dedicated to showcasing campus initiatives supporting Native American and Indigenous students.

**ON THE WEB:** [www.aplu.org/native-american-campus-initiatives](http://www.aplu.org/native-american-campus-initiatives)

### Reimagining Teaching to Maximize Student Learning:

APLU led a variety of efforts to advance instructional effectiveness in 2024. APLU supported the implementation and adoption of digital courseware designed to improve student success in introduction to statistics and introduction to chemistry courses at 15 institutions with support from the Gates Foundation.

Additionally, APLU provided training to several institutions on promoting a cross-collaborative data culture to drive student success gains. And to help institutions leverage the power of AI in this space, APLU created an informal working group on leading academic innovation at APLU universities, including leveraging AI. The

association also received multiple grants to develop training materials in strategic planning for the implementation of AI and digital learning.

**Improving STEM Student Success:**

APLU staff co-authored *Eight Indicators for Measuring Equitable Student Success in STEM*, which was published in *Change* magazine. The piece was informed by the work of the National Academies for Sciences, Engineering, and Medicine Roundtable on Systemic Change in Undergraduate STEM Education, on which APLU staff serve.

**The NSF Eddie Bernice Johnson INCLUDES Aspire Alliance:** Led by APLU, the Aspire Alliance is now

a more than \$13 million, seven-year NSF-funded project. In its final year, Aspire is focused on deepening the reach of three of its most promising activities to support a more inclusive and diverse STEM faculty into partner organizations to further support sustainability. Aspire has produced more than 30 reports, articles, and toolkits, engaged 151 institutions and 4,300 participants in workshops, learning communities, seminars, and institutes.

▶ Aspire’s Institutional Change (ICChange) Initiative has resulted in

three productive NSF ADVANCE partnership projects, including with the California State University System to improve faculty support practices in engineering programs (concluded fall 2024), with the National Center for Women in Information Technology to enhance faculty support for computing departments, and with the Rochester Institute of Technology on faculty compensation.

▶ Seven APLU members joined an 18-month cohort process focused on analyzing salary outcomes and processes to improve pay transparency, equity, and consistency.



PHOTOS COURTESY OF THE UNIVERSITY OF TENNESSEE KNOXVILLE, VIRGINIA TECH, AND FORT VALLEY STATE UNIVERSITY



PHOTOS COURTESY OF UNIVERSITY OF MARYLAND, BALTIMORE COUNTY, NORTHERN ILLINOIS UNIVERSITY, AND UNIVERSITY OF WISCONSIN-MILWAUKEE

# IV. Fostering Public Impact Research & Innovation

**SPIRIT ADVANCE:** APLU launched a \$1.25 million, NSF-funded multi-year collaborative effort called Supporting Public Impact Research through Institutional Transformation (SPIRIT) with four public research universities to identify and disseminate novel approaches to support faculty and researchers undertaking Public Impact Research. SPIRIT will work with four partner universities to pilot innovative approaches to improve the evaluation and support for PIR on their campuses. Pilot project focus areas range from providing additional training and support to promotion and tenure review committees, ongoing professional development activities for scholars, a micro-grant program, and a partnership with university librarians to support faculty in documenting their impact.

**ON THE WEB:** [www.aplu.org/supportingPIR](http://www.aplu.org/supportingPIR)

**Pew Workshop:** APLU and The Pew Charitable Trusts convened a cross-sector workshop in April to explore how to collectively foster the PIR ecosystem. This workshop included more than 60 participants representing eight sectors: disciplinary societies, government agencies, higher education associations, institutional leaders, (inter)national conveners, private foundations, publishers, and researchers. The workshop aimed to develop shared understanding and language, identify opportunities to partner productively, and co-create strategic approaches that span sectors to help PIR flourish. From the workshop discussions, a central theme emerged: the responsibility for facilitating a more robust PIR ecosystem must be shared among all actors in the research enterprise. It is incumbent upon the entire ecosystem to align efforts, supports,

and incentives to empower researchers in this crucial work.

## **National Land-Grant Impacts**

**Database:** APLU's Office of Food, Agriculture and Natural Resources assumed management of the National Impact Database (NIDB) in 2023. NIDB is the nation's most extensive repository of the public and land-grant system's collective impacts statements in research, education, and Extension. It serves as a comprehensive and important resource for APLU member institutions to "tell their stories." In 2024, APLU continued to revitalize the website and submission process. Member institutions have now uploaded almost 1,000 impact stories to the NIDB. Top focus areas include agricultural systems; environmental stewardship; and youth, family, and communities.

**ON THE WEB:** [landgrantimpacts.org/](http://landgrantimpacts.org/)



PHOTOS COURTESY OF AUBURN UNIVERSITY, UNIVERSITY OF CALIFORNIA, AND SOUTHERN UNIVERSITY AND A&M COLLEGE, BATON ROUGE

**Partnering with USDA to Promote Transdisciplinary Research:**

APLU's Board on Agricultural Assembly partnered with the USDA's National Agricultural Library and National Institute of Food and Agriculture to promote and support transdisciplinary approaches to research projects and initiatives that require intentionality, collaboration, and engagement working with Extension and community-based partners. Emphasis was on the development of multifaceted research that supports inclusivity and diverse perspectives to address the complex challenges facing food and

agricultural systems today. A national webinar, *Leveraging Extension and University Engagement: Developing and Implementing Novel Projects Using Transdisciplinary Approaches*, had more than 500 participants who provided overwhelming feedback on the usefulness of the content.

**Cooperative Extension Climate Action Plan:**

Leaders from across the Cooperative Extension System convened in early 2024 to identify climate solutions that the Cooperative Extension network is uniquely suited to deliver. This convening led the

development of the Cooperative Extension Climate Action Plan, which identified three priority workstreams of agricultural lands, natural resources, and community, which represent areas in which Extension can be particularly effective on climate action in light of its history, skills, and relationships at the community level, particularly its ability to make complex science both clear and useful.

**ON THE WEB:** [extension.org/  
portfolio-item/cooperative-extension-  
system-climate-action-plan/](https://extension.org/portfolio-item/cooperative-extension-system-climate-action-plan/)



PHOTOS COURTESY OF UNIVERSITY OF NEVADA, RENO AND FORT VALLEY STATE UNIVERSITY



PHOTOS COURTESY OF NORTH CAROLINA STATE UNIVERSITY AND UNIVERSITY OF GEORGIA

# V. Deepening Community and Economic Engagement Locally & Globally

## Partnering as Economic Engines for Success

### Innovation and Economic Prosperity (IEP) Universities Program Growth and Expansion:

APLU completed the eleventh year of its Innovation and Economic Prosperity University (IEP) designation and awards program with 11 new university designees and four more award winners.

- ▶ The IEP designation program helps universities better know, measure, tell, and enhance their economic and community development impact while recognizing institutions that have demonstrated a substantive, sustainable, and institution-wide commitment to and strategy for regional economic engagement, growth, and economic opportunity.

- ▶ To date, 97 universities have earned the designation with an additional 17 institutions currently pursuing it. Seven non-APLU members received the designation through a partnership with the University Economic Development Association.

**ON THE WEB:** [www.aplu.org/iep](http://www.aplu.org/iep)

### The Higher Education in Entrepreneurial Ecosystems

**Toolkit:** APLU, in collaboration with the University of Wisconsin-Oshkosh and Venn Collaborative and with funding from the Ewing Marion Kauffman Foundation, developed a new toolkit with strategies, resources, and connections to help higher education institutions play a supporting role in building thriving entrepreneurial ecosystems.

## Elevating Engaged Research & Community Partnerships

### Addressing Poverty & Hunger:

APLU's Board on Health and Human Sciences pursued opportunities to serve as a connector across public and land-grant universities and position APLU members as experts working at the intersections of agriculture, food, nutrition, and health.

- ▶ APLU, along with other national thought leaders from public health organizations, academic institutions, and private industry, engaged directly with the White House on multiple occasions regarding the administration's poverty and hunger strategy. The association shared the variety of ways its member institutions could



PHOTOS COURTESY OF AUBURN UNIVERSITY, THE UNIVERSITY OF MISSISSIPPI, AND WASHINGTON STATE UNIVERSITY

contribute to the administration's efforts through their research and engagement efforts across the country.

## International Engagement

**Outreach Abroad:** APLU remains active in representing North American public and land-grant universities to international organizations and associations abroad. In 2024, APLU hosted senior higher education delegations from Cameroon, Indonesia, the Philippines, Japan, and Saudi Arabia. The visits were designed to help foreign Ministries of Higher Education better

understand the U.S. higher education system and how to engage with public universities.

### Strengthening US-India Higher Education Collaboration:

In November 2024, APLU signed an MOU with the Confederation of Indian Private Universities (CIPU), to strengthen ties between member universities and promote greater research collaboration and student and faculty exchanges between both countries. As part of the Annual Meeting, APLU and CIPU hosted a half-day India-USA Higher Education Dialogue to launch the partnership.

### Strengthening the North

**American Zone of Knowledge:** To mark the 10-year anniversary of APLU becoming a North American higher education association, with members in Canada and Mexico, APLU President Mark Becker and APLU's Commission on International Initiatives' Chair Taylor Eighmy, led two separate delegation visits to Mexico and one to Canada to meet with higher education partners, government leaders, and the business community to identify areas for greater collaboration around research, innovation, and workforce development.



PHOTO COURTESY OF SOUTH DAKOTA STATE UNIVERSITY

## 2025 Board of Directors

### Executive Committee

#### CHAIR

**Joan Ferrini-Mundy**  
President, University of Maine

#### CHAIR-ELECT

**Joan Gabel**  
Chancellor, University of Pittsburgh

#### PAST-CHAIR

**Makola Abdullah**  
President, Virginia State University

#### CHAIR, COUNCIL OF PRESIDENTS

**Santa Ono**  
President, University of Michigan

#### SECRETARY, COUNCIL OF PRESIDENTS

**Brian Sandoval**  
President, University of Nevada, Reno

### Council Representatives

#### COUNCIL OF 1890 UNIVERSITIES

**Heidi Anderson**  
President, University of Maryland  
Eastern Shore

#### COUNCIL OF PRESIDENTS' & CHANCELLORS' SPOUSES/PARTNERS

**Laura Mahony**  
President's Spouse/Partner, Southern  
Illinois University System

#### COUNCIL ON ACADEMIC AFFAIRS

**Ed Feser**  
Provost, Oregon State University

#### COUNCIL REPRESENTATIVE

**Menah Pratt**  
Vice President, Strategic Affairs and  
Diversity, Virginia Tech

#### COUNCIL ON GOVERNMENTAL AFFAIRS

**Lauren Brookmeyer**  
Assistant Vice President, Federal  
Relations, Stony Brook University

#### COUNCIL ON RESEARCH

**Irem Tumer**  
Vice President, Research and  
Innovation, Oregon State University

#### COUNCIL ON STRATEGIC COMMUNICATIONS

**Robin Kaler**  
Associate Chancellor, Strategic  
Communications and  
Marketing, University of Illinois  
Urbana-Champaign

#### COUNCIL ON STUDENT AFFAIRS

**Martino Harmon**  
Vice President, Student Life,  
University of Michigan

### Commission Representatives

#### COALITION OF URBAN SERVING UNIVERSITIES

**Michael Armirdis**  
President, University of South Carolina

#### COMMISSION ON ECONOMIC & COMMUNITY ENGAGEMENT

**Marlene Tromp**  
President, Boise State University

#### COMMISSION ON FOOD, ENVIRONMENT, & RENEWABLE RESOURCES

**Mun Choi**  
Chancellor, University of Missouri

#### CFERR-BOARD ON AGRICULTURE ASSEMBLY

**J. Ernest Minton**  
Dean, College of Agriculture and  
Director, K-State Research and  
Extension, Kansas State University

#### COMMISSION ON INFORMATION, MEASUREMENT, & ANALYSIS

**Alexander Cartwright**  
President, University of Central Florida

#### AUDIT COMMITTEE CHAIR

**Jonathan Pruitt**  
Executive Vice Chancellor, Business  
Administration, The University of  
Texas System

#### COMMISSION ON INTERNATIONAL INITIATIVES

**Taylor Eighmy**  
President, The University of Texas at  
San Antonio

### At-Large Members

**Betsy Cantwell**  
President, Utah State University

**Adela de la Torre**  
President, San Diego State University

**Darryll Pines**  
President, University of Maryland

**Havidán Rodríguez**  
President, University at Albany, SUNY

**Garnett Stokes**  
President, University of New Mexico

**William F. Tate**  
President, Louisiana State University

## Offices and Staff

January 2025

### Office of the President & Administration

**Mark Becker**  
President

**Jeff Lieberson**

Executive Vice President & Senior Vice President, Public Affairs

**Jean R. Middleton, CMP**

Senior Vice President & Chief of Staff

**Michelle Szechenyi**

Vice President, Human Resources

**Robin Parent**

Associate Vice President, Diversity, Equity and Inclusion & STEM Education

**Sarah Bolon**

Executive Assistant

**Amanda Tropiano**

Manager, Events

**Claire Shu**

Senior Associate, Events

**Lexus Bivins**

Senior Associate, President's Office

### Office of Academic Affairs

**Howard Gobstein**

Interim Senior Vice President, Academic Affairs

**Jessica Bennett, Ph.D.**

Associate Vice President, Academic Affairs

**Bao Le**

Associate Vice President, Data & Policy Analysis

**Kacy Redd, Ph.D.**

Associate Vice President, Research & STEM Education

**Levi Shanks, Ph.D.**

Assistant Vice President, Academic & Student Affairs

**Gregory Thornton**

Associate Director, Academic Affairs

**Brendan Parmenter**

Data Analyst

**Rifa Ariella**

Senior Program Associate, Academic and Student Affairs

**Joanna Stenson**

Senior Associate, Academic Affairs

### Office of Digital Transformation for Student Success

**Karen Vignare, Ph.D.**

Vice President, Digital Transformation for Student Success & Executive Director, Personalized Learning Consortium

**Megan Tesene, Ph.D.**

Assistant Vice President, Personalized Learning Consortium & Digital Transformation for Student Success

**Riccardo Purita**

Assistant Director, Digital Transformation for Student Success

### Office of Finance

**Varun Dhawan**

Chief Financial Officer & Treasurer

**Kim Prophet**

Controller

**Marsha Ogburn**

Manager, Payroll

**Don Hawkins**

Senior Associate, Finance (Accounts Payable)

**Ken Lloyd**

Associate, Finance (Accounts Receivable)

### Office of Food, Agriculture, & Natural Resources

**Douglas Steele, Ph.D.**

Vice President, Food, Agriculture, & Natural Resources

**Wendy Fink**

Executive Director, Academic Programs Section and Associate Vice President, Food, Agriculture & Natural Resources

**Bill Hoffman, Ed.D.**

Executive Director, Cooperative Extension System & Extension Committee on Organization and Policy

**Andrea Putman**

Assistant Vice President, FANR Communications & External Partnerships

**Kelly Dalton, Ph.D., RDN**

Executive Director, Board on Health & Human Sciences and Director, Food, Agriculture, & Natural Resources

**Marcus Glassman**

Director, Governmental Affairs, Agriculture & International Development

**Suzette Robinson**

Special Assistant to the Vice President, Food, Agriculture, & Natural Resources

**Flannery Bethel**

Manager, Food, Agriculture, & Natural Resources

**Kim Scotto**

Manager, Food, Agriculture, & Natural Resources Communications

**Susan Thomas**

Senior Associate, Food, Agriculture & Natural Resources

**Sophia Baker**

Associate, Food, Agriculture & Natural Resources

### Office of Governmental Affairs

**Craig Lindwarm**

Senior Vice President, Governmental Affairs

**Deborah Altenburg**

Vice President, Research Policy and Advocacy

**Jonathan Elkin**

Director, Governmental Affairs

**Marcus Glassman**

Director, Governmental Affairs, Agriculture & International Development

**Megan McKeown**  
Director, Governmental Affairs

**MacGregor Obergfell**  
Director, Governmental Affairs

**Ashley Amian**  
Manager, Governmental Affairs

### **Office of Information Technology**

**Henry M. Wong**  
Assistant Vice President, IT & Building Operations

**Denis Garcia**  
Manager, Information Technology

### **Office of International, Community, & Economic Engagement**

**Bernard Burrola**  
Vice President, International, Community & Economic Engagement

**Alvaro Muñoz, J.D.**  
Director, International, Community, & Economic Engagement

**Milan Ephraim**  
Assistant Director, International, Community & Economic Engagement

**Jordan Merker**  
Assistant Director, International, Community & Economic Engagement

**Caydan Henslee**  
Senior Associate, International, Community, & Economic Engagement

### **Office of Public Affairs**

**Jeff Lieberson**  
Executive Vice President & Senior Vice President, Public Affairs

**David Edelson**  
Associate Vice President, Public Affairs & Member Engagement

**Mike Brost**  
Assistant Vice President, Public Affairs

**Rachel Storey**  
Senior Associate, Public Affairs

### **Office of Research Policy**

**Deborah Altenburg**  
Vice President, Research Policy and Advocacy

**Kacy Redd, Ph.D.**  
Associate Vice President, Research & STEM Education

**Kevin Cooke, Ph.D.**  
Director, Research Policy

**Abigael Eshete**  
Associate, Research Policy

### **Office of Urban Initiatives**

**Jennifer Keup, Ph.D.**  
Vice President, Urban Initiatives & Executive Director, Coalition of Urban Serving Universities (USU)

**Samantha Levine**  
Director, Coalition of Urban Serving Universities

**Jimmy McClellan**  
Associate Director, Coalition of Urban Serving Universities

**Julia Boyer**  
Senior Associate, Coalition of Urban Serving Universities

## APLU Members

The Association of Public and Land-grant Universities is a research, policy, and advocacy organization dedicated to strengthening and advancing the work of public universities. APLU's members span across all 50 states, the District of Columbia, six U.S. territories, Canada, and Mexico.

The association's membership includes 25 university systems and 219 universities, of which 78 are U.S. land-grant

institutions, and three affiliates. Twenty-three historically black colleges and universities (HBCUs) are members, of which 21 are land-grant institutions (19 under the 1890 Morrill Act, two under the 1862 Morrill Act). The 36 Native American institutions designated as 1994 land-grant universities are represented through the American Indian Higher Education Consortium (AIHEC). Members also include 39 Asian American and Native American

Pacific Islander-Serving Institutions (AANAPISI) and 36 Hispanic-Serving Institutions (HSIs).

### Member Universities by Jurisdiction United States

#### ALABAMA

Alabama A&M University<sup>1,2</sup>  
 Auburn University<sup>1</sup>  
 Tuskegee University<sup>1,2</sup>  
 The University of Alabama  
 The University of Alabama at Birmingham  
 The University of Alabama in Huntsville  
 University of South Alabama

#### ALASKA

University of Alaska Fairbanks<sup>1</sup>

#### AMERICAN SAMOA

American Samoa Community College<sup>1,4</sup>

#### ARIZONA

Arizona State University<sup>3</sup>  
 Northern Arizona University<sup>3</sup>  
 University of Arizona<sup>1,3</sup>

#### ARKANSAS

University of Arkansas<sup>1</sup>  
 University of Arkansas at Pine Bluff<sup>1,2</sup>

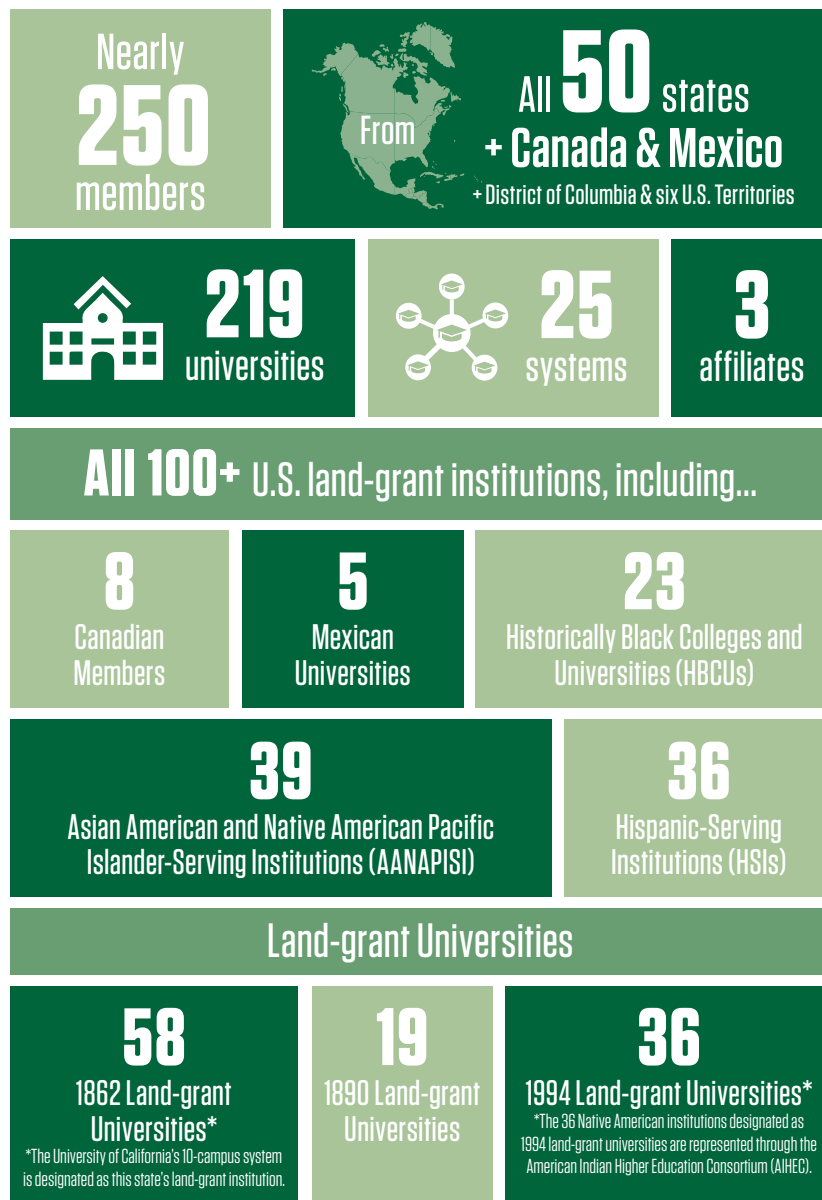
#### CALIFORNIA

California Polytechnic State University, San Luis Obispo<sup>4</sup>  
 California State University, Fresno<sup>3,4</sup>  
 California State University, Northridge<sup>3</sup>  
 California State University, Sacramento<sup>3,4</sup>  
 San Diego State University<sup>3,4</sup>  
 San Jose State University<sup>3,4</sup>  
 University of California, Berkeley<sup>1,4</sup>  
 University of California, Davis<sup>1,4</sup>  
 University of California, Irvine<sup>1,3,4</sup>  
 University of California, Los Angeles<sup>1,4</sup>  
 University of California, Merced<sup>1,3,4</sup>  
 University of California, Riverside<sup>1,3,4</sup>  
 University of California, San Diego<sup>1,4</sup>  
 University of California, Santa Barbara<sup>1,3,4</sup>  
 University of California, Santa Cruz<sup>1,3,4</sup>

#### COLORADO

Colorado School of Mines  
 Colorado State University<sup>1</sup>  
 University of Colorado Boulder  
 University of Colorado Denver<sup>3,4</sup>

## APLU Membership



**CONNECTICUT**

University of Connecticut <sup>1,3,4</sup>

**DELAWARE**

Delaware State University <sup>1,2</sup>  
University of Delaware <sup>1</sup>

**DISTRICT OF COLUMBIA**

University of the District of Columbia <sup>1,2</sup>

**FEDERATED STATES OF MICRONESIA**

College of Micronesia <sup>1,4</sup>

**FLORIDA**

Florida A&M University <sup>1,2</sup>  
Florida Atlantic University <sup>3</sup>  
Florida International University <sup>3</sup>  
Florida State University  
University of Central Florida <sup>3</sup>  
University of Florida <sup>1</sup>  
University of North Florida  
University of South Florida

**GEORGIA**

Augusta University  
Fort Valley State University <sup>1,2</sup>  
Georgia Institute of Technology  
Georgia Southern University  
Georgia State University  
Kennesaw State University  
University of Georgia <sup>1</sup>

**GUAM**

University of Guam <sup>1,4</sup>

**HAWAII**

University of Hawai'i at Manoa <sup>1,4</sup>

**IDAHO**

Boise State University  
Idaho State University  
University of Idaho <sup>1</sup>

**ILLINOIS**

Illinois State University  
Northern Illinois University  
Southern Illinois University Carbondale  
University of Illinois Chicago <sup>3,4</sup>  
University of Illinois Urbana-Champaign <sup>1</sup>

**INDIANA**

Ball State University  
Indiana University  
Indiana University Indianapolis  
Purdue University <sup>1</sup>

**IOWA**

Iowa State University <sup>1</sup>  
University of Iowa

**KANSAS**

Kansas State University <sup>1</sup>  
University of Kansas  
Wichita State University

**KENTUCKY**

Kentucky State University <sup>1,2</sup>  
University of Kentucky <sup>1</sup>  
University of Louisville

**LOUISIANA**

Louisiana State University and  
Agricultural & Mechanical College <sup>1</sup>  
Louisiana Tech University  
Southern University and A&M  
College, Baton Rouge <sup>1,2</sup>  
University of Louisiana at Lafayette  
University of New Orleans

**MAINE**

The University of Maine <sup>1</sup>

**MARYLAND**

Morgan State University <sup>2</sup>  
United States Naval Academy  
University of Maryland,  
Baltimore County <sup>4</sup>  
University of Maryland <sup>1</sup>  
University of Maryland Eastern Shore <sup>1,2</sup>  
University of Maryland Global Campus

**MASSACHUSETTS**

Massachusetts Institute of Technology <sup>1</sup>  
University of Massachusetts Amherst <sup>1</sup>  
University of Massachusetts Boston <sup>4</sup>  
University of Massachusetts Dartmouth  
University of Massachusetts Lowell <sup>4</sup>

**MICHIGAN**

Central Michigan University  
Michigan State University <sup>1</sup>  
Michigan Technological University  
Oakland University  
University of Michigan  
Wayne State University <sup>4</sup>  
Western Michigan University

**MINNESOTA**

University of Minnesota <sup>1,4</sup>  
University of Minnesota Duluth

**MISSISSIPPI**

Alcorn State University <sup>1,2</sup>  
Jackson State University <sup>2</sup>  
Mississippi State University <sup>1</sup>  
The University of Mississippi  
The University of Southern Mississippi

**MISSOURI**

Lincoln University <sup>1,2</sup>  
Missouri University of Science  
and Technology  
University of Missouri <sup>1</sup>  
University of Missouri-Kansas City

**MONTANA**

Montana State University <sup>1</sup>  
The University of Montana

**NEBRASKA**

University of Nebraska-Lincoln <sup>1</sup>  
University of Nebraska Omaha

**NEVADA**

University of Nevada, Las Vegas <sup>3,4</sup>  
University of Nevada, Reno <sup>1</sup>

**NEW HAMPSHIRE**

University of New Hampshire <sup>1</sup>

**NEW JERSEY**

Montclair State University <sup>3</sup>  
New Jersey Institute of Technology <sup>3,4</sup>  
Rutgers University <sup>1</sup>  
Rutgers University-Camden  
Rutgers University-Newark <sup>3,4</sup>

**NEW MEXICO**

New Mexico State University <sup>1,3</sup>  
The University of New Mexico <sup>3</sup>

**NEW YORK**

Binghamton University, SUNY  
Cornell University <sup>1</sup>  
Stony Brook University, SUNY  
SUNY Polytechnic Institute  
University at Albany, SUNY  
University at Buffalo, SUNY

**NORTH CAROLINA**

East Carolina University  
North Carolina A&T State University <sup>1,2</sup>  
North Carolina State University <sup>1</sup>  
The University of North  
Carolina at Chapel Hill  
The University of North Carolina  
at Charlotte  
The University of North Carolina  
at Greensboro  
University of North Carolina Wilmington

**NORTH DAKOTA**

North Dakota State University <sup>1</sup>  
The University of North Dakota

**NORTHERN MARIANA ISLANDS**

Northern Marianas College <sup>1,4</sup>

## OHIO

Bowling Green State University  
Central State University<sup>1,2</sup>  
Cleveland State University  
Kent State University  
Miami University  
Ohio University  
The Ohio State University<sup>1</sup>  
The University of Akron  
The University of Toledo  
University of Cincinnati  
Wright State University

## OKLAHOMA

Langston University<sup>1,2</sup>  
Oklahoma State University<sup>1</sup>  
University of Oklahoma

## OREGON

Oregon State University<sup>1</sup>  
Portland State University  
University of Oregon

## PENNSYLVANIA

The Pennsylvania State University<sup>1</sup>  
Temple University  
University of Pittsburgh

## PUERTO RICO

University of Puerto Rico Mayagüez<sup>1,3</sup>

## RHODE ISLAND

The University of Rhode Island<sup>1</sup>

## SOUTH CAROLINA

Clemson University<sup>1</sup>  
South Carolina State University<sup>1,2</sup>  
University of South Carolina

## SOUTH DAKOTA

South Dakota Mines  
South Dakota State University<sup>1</sup>  
University of South Dakota

## TENNESSEE

East Tennessee State University  
Middle Tennessee State University  
Tennessee State University<sup>1,2</sup>  
The University of Memphis  
The University of Tennessee Knoxville<sup>1</sup>

## TEXAS

Prairie View A&M University<sup>1,2</sup>  
Tarleton State University  
Texas A&M University<sup>1,3,4</sup>  
Texas State University<sup>3</sup>  
Texas Tech University<sup>3</sup>

University of Houston<sup>3,4</sup>  
University of North Texas<sup>3</sup>  
The University of Texas at Arlington<sup>3,4</sup>  
The University of Texas at Austin<sup>3,4</sup>  
The University of Texas at Dallas  
The University of Texas at El Paso<sup>3</sup>  
The University of Texas at Tyler  
The University of Texas at San Antonio<sup>3</sup>  
The University of Texas Rio Grande Valley<sup>3</sup>

## UTAH

The University of Utah  
Utah State University<sup>1</sup>

## VERMONT

The University of Vermont<sup>1</sup>

## VIRGIN ISLANDS

University of the Virgin Islands<sup>1,2</sup>

## VIRGINIA

George Mason University<sup>4</sup>  
James Madison University  
Old Dominion University  
University of Virginia  
Virginia Commonwealth University<sup>4</sup>  
Virginia Polytechnic Institute & State University (Virginia Tech)<sup>1,4</sup>  
Virginia State University<sup>1,2</sup>  
William & Mary

## WASHINGTON

University of Washington  
Washington State University<sup>1</sup>

## WEST VIRGINIA

Marshall University  
West Virginia State University<sup>1,2</sup>  
West Virginia University<sup>1</sup>

## WISCONSIN

University of Wisconsin-Madison<sup>1</sup>  
University of Wisconsin-Milwaukee

## WYOMING

University of Wyoming<sup>1</sup>

## Canada

Dalhousie University  
University of Alberta  
The University of British Columbia  
University of Calgary  
University of Saskatchewan  
Western University  
Queen's University

## Mexico

Instituto Politécnico Nacional  
Universidad Autónoma de Nuevo León  
Universidad de Guadalajara  
Universidad Nacional Autónoma de México  
Universidad Veracruzana

## University Systems

Colorado State University System  
North Dakota University System  
Southern Illinois University System  
Southern University System  
State University System of Florida  
The Texas A&M University System  
Texas Tech University System  
The California State University System  
The City University of New York System  
The State University of New York System  
The University of Texas System  
Universities of Wisconsin  
University of Alabama System  
University of Alaska System  
University of California<sup>1\*</sup>  
University of Colorado System  
University of Hawai'i System  
University of Illinois System  
University of Massachusetts System  
University of Missouri System  
University of Nebraska System  
University of North Carolina System  
University of Tennessee System  
University System of Georgia  
University System of Maryland

## Related Higher Education Organizations

American Indian Higher Education Consortium (AIHEC)  
Association of Canadian Faculties of Agriculture and Veterinary Medicine (ACFAVM)  
Connecticut Agricultural Experiment Station<sup>1</sup>

*Membership listing as of January 2025*

<sup>1</sup> Land-grant institution as designated by the state legislature.

<sup>1\*</sup> The University of California's 10-campus system is designated as the state's land-grant institution.

<sup>2</sup> Historically Black College or University

<sup>3</sup> Hispanic-Serving Institution

<sup>4</sup> Asian-American and Native American Pacific Islander-Serving Institutions

## Finance Funders and Projects

In addition to APLU's membership dues, in 2024 several funders supported APLU's work with a combined contribution of \$21.18 million over the life of 30 different grants and contracts.

### Alfred P. Sloan Foundation

- ▶ Engaging with the Past to Embrace the Future: Supporting Indigenous Students at Public and Land-grant Institutions
- ▶ Graduate TAs as Change Agents for Equitable Student Experience

### American Association for the Advancement of Science

- ▶ Advancing SEA Change

### Arnold Ventures, LLC

- ▶ Promoting Federal Investment in Student Success

### Bill and Melinda Gates Foundation

- ▶ Intermediaries for Scale (Powered by Publics)
- ▶ Technical Assistance for the Intermediaries for Scale Cohort
- ▶ General Operations Support for the Center for Public University Transformation
- ▶ Higher Education Equity Network
- ▶ Scaling Courseware in Intro to Statistics and Chemistry
- ▶ Developing Networks to Scale Innovation in Math

### Burroughs Welcome Fund

- ▶ Civics Science Fellow

### California State University, Fresno/National Science Foundation

- ▶ Kindling Inter-University Networks for Diverse (KIND) Engineering Faculty Advancement

### Colorado State University, Boulder/National Science Foundation

- ▶ NCWIT ADVANCE: Advancing Gender Equity in Computing and Engineering Academic Professions through Multi-Organizational Collaboration

### Lumina Foundation for Education

- ▶ Partnerships for Adult Learner Success

### National Science Foundation

- ▶ The Status Reports on Computer and Information Sciences
- ▶ NSF INCLUDES Aspire Alliance: The National Alliance for Inclusive and Diverse STEM Faculty
- ▶ Conference: Charting & Expanding Needed Trails to Research Administration & Leadership
- ▶ Supporting Public Impact Research

### Raikes Foundation

- ▶ Student Experience Project
- ▶ Increasing Adoption of SEP Approach to Equitable College Classrooms
- ▶ Scaling Student Experience Project Practices and Supporting Systemic Change

### Strada Foundation

- ▶ Accelerating Career Readiness
- ▶ Accelerating Career Innovations Network

### Rochester Institute of Technology/National Science Foundation

- ▶ Let's Talk Money: Building Community Understanding of the Institutional Compensation System

### University of Wisconsin - Oshkosh

- ▶ Higher Education Entrepreneurial Ecosystems Toolkit Project

### United States Department of Agriculture (Natural Resources Conservation Service)

- ▶ Outreach and Recruitment to Colleges and Universities

### WICHE Cooperative for Educational Technologies/Bill & Melinda Gates Foundation

- ▶ Building An Academic Data Culture to Support Student Success
- ▶ Every Learner Everywhere: Preconference Workshop
- ▶ Every Learner Everywhere: Network Improvement Investment



PHOTO COURTESY OF TEXAS STATE UNIVERSITY

## About APLU

The Association of Public and Land-grant Universities (APLU) is a research, policy, and advocacy organization dedicated to strengthening and advancing the work of public universities in the U.S., Canada, and Mexico.

With a membership of nearly 250 public research universities, land-grant institutions, state university systems, and affiliated organizations, APLU's agenda is built on the three pillars:

- Driving Student Success and Workforce Readiness;
- Fostering Research & Innovation to Meet Societal Needs; and
- Deepening Community & Economic Engagement to Benefit All

The association's work is furthered by an active and effective advocacy arm that works with Congress and the administration as well as the media to advance federal policies that strengthen public universities and benefit the students they serve.

APLU undertakes a wide array of projects and initiatives along with its members and provides a forum for public higher education leaders to work collaboratively and better meet the challenges and opportunities facing public universities. Rallying the talents, knowledge and expertise among its member institutions is critical to the association's mission.

Founded in 1887, APLU is North America's oldest higher education association. APLU's membership includes 219 campuses, (79 U.S. land-grant institutions), 25 university systems, 1 land-grant affiliate and 2 affiliate members. Twenty-three members are historically black colleges and universities (HBCUs), of which 21 are

land-grant institutions (19 under the 1890 Morrill Act, 2 under the 1862 Morrill Act).

Eight Canadian institutions (including one related higher education organization) and five Mexican universities are members of APLU.

## APLU AT-A-GLANCE

### ANNUALLY . . .

APLU's **247** member institutions

LOCATED IN ALL 50 STATES, THE DISTRICT OF COLUMBIA, 6 U.S. TERRITORIES, CANADA, AND MEXICO



### ENROLL



**5.3 million**  
undergraduates



AND **1.4 million**  
graduate students

### AWARD



**1.5 million**  
degrees

### EMPLOY

**1.3 million**  
faculty and staff



### AND CONDUCT



**\$61 billion**  
in university-based research.



ASSOCIATION OF  
PUBLIC &  
LAND-GRANT  
UNIVERSITIES



1220 L Street NW  
Suite 1000  
Washington, DC 20005  
(202) 478-6040 • [www.aplu.org](http://www.aplu.org)

 @APLU\_NEWS

 [LINKEDIN.COM/COMPANY/APLU-NEWS](https://www.linkedin.com/company/aplu-news)

 [FACEBOOK.COM/APLUNEW](https://www.facebook.com/aplunews)S

 [YOUTUBE.COM/APLUNEW](https://www.youtube.com/aplunews)S

