

The University of Akron

★ LEARNED from our COHORT ABOUT CROWDSOURCING & DATA ANALYTICS

★ COURSE CONTENT IS MODULAR

★ IT'S NOT LINEAR
DIFFERENT WAYS TO ACHIEVE SAME OUTCOME

★ DO BETTER THAN WHAT THE ANALYTICS WOULD PREDICT



★ TIME IN SEAT



DOES NOT EQUAL



TIME TO LEARN

FIU

PASS COLLEGE ALGEBRA

75% MORE LIKELY TO GRADUATE

$$(X+1) = \text{graduation cap}$$

★ GATEWAY COURSES



★ MEANINGFUL DOCUMENT
★ STRAT. PLAN



★ GSI:
GRADUATION SUCCESS INITIATIVE



★ DATA BASED RECOMMENDATIONS

★ TRANSFORMING TEACHING CULTURE

UT3

★ INCENTIVIZING FACULTY

★ COHORT
INTERESTING TO BE AROUND OTHERS WHO ARE THINKING ABOUT THESE ISSUES

NATIONAL EXPOSURE

★ VALUE in SHARING these written documents



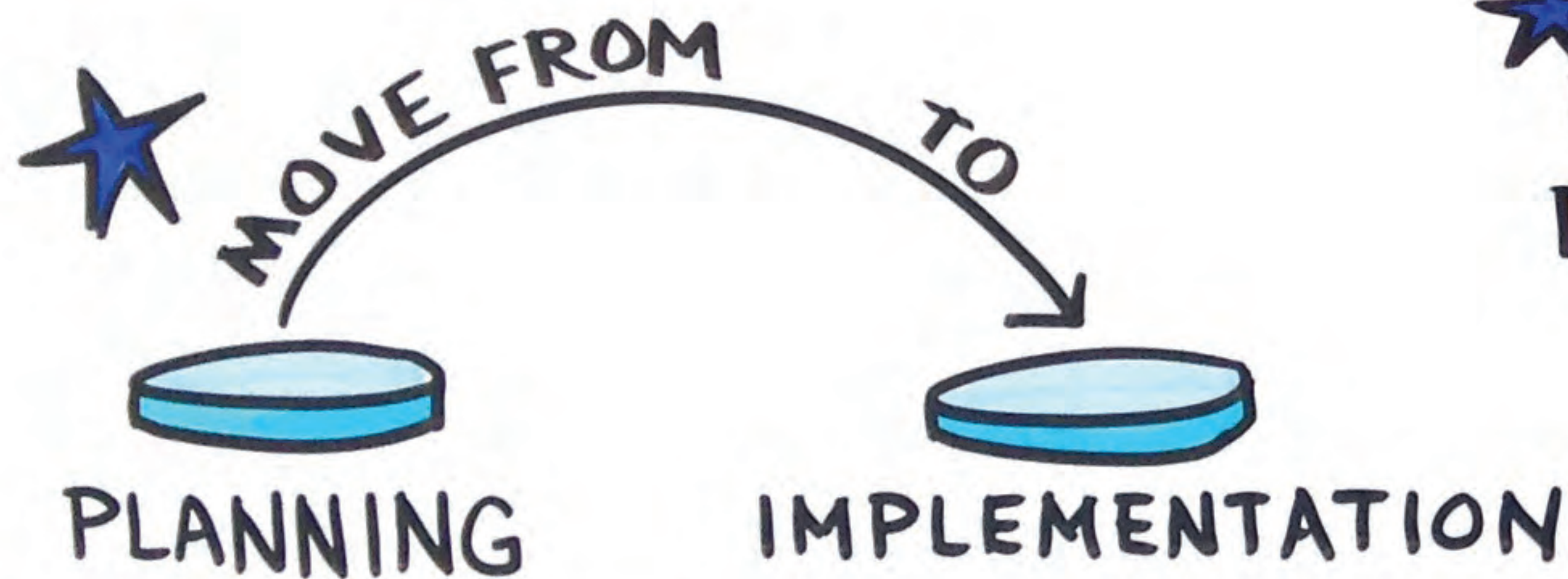
FRESNO STATE

★ WE CAN MAKE AN IMPACT ON **QUALITY OF LIFE**




★  CEO'S OF PARTNERS ARE MAKING IT A PRIORITY

★ *Let's* OF POSITIVE ENERGY



★ DIVERSE PARTNERSHIPS



★ IDEAS WE'VE SHARED



★ PROMISE PIPELINE



★ CONTINUE COLLABORATING



★ COMMUNITY COLLEGES


★ HELPS US DELIVER



★ LEARNING ABOUT CHANGE MANAGEMENT 

★ WE'VE PULLED IN PARTNERS IN WAYS WE MAY NOT HAVE BEFORE

★ FINANCIAL ANALYTICS 


★ NEED TO LOOK AT WHOLE STUDENT 

★ MOBILE APP 

★ COHORT
IT'S POSSIBLE TO LEARN FROM EVERYONE



OUR RELATIONSHIP WILL GROW OVER TIME

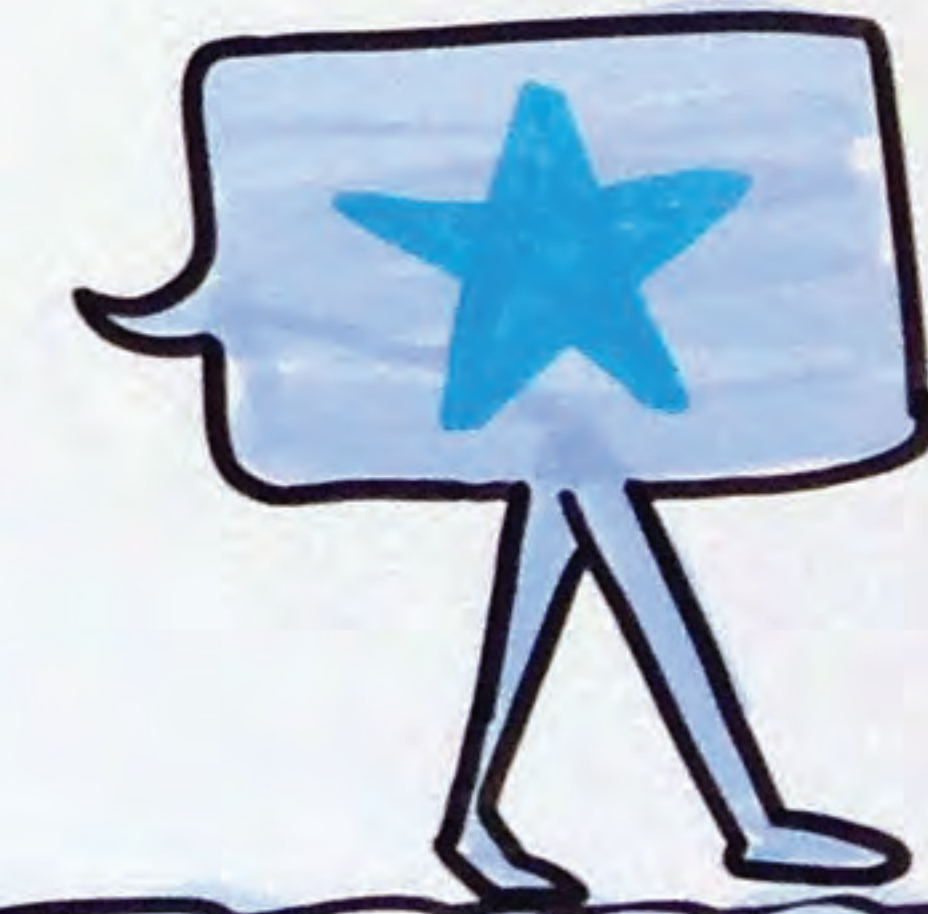
the clock

COURSE SCHEDULE
↓
STRUCTURAL IMPEDIMENT

SCHEDULING PRACTICES

↓ SHARE → TRAIN

★ CONTINUE TO FIND WAYS TO CONNECT PEOPLE THROUGHOUT OUR INSTITUTION


WE ARE ALWAYS READY TO TALK & SHARE





Portland State UNIVERSITY

★ HAVE TEAMS VISIT EACH OTHER



★ DISCOVERY of WAY OF GENERATING IDEAS

★ 4-6 NEW PROGRAMS A YEAR

★ CONFIDENCE FROM BEING AROUND OTHERS DOING SIMILAR WORK


★ BIG INNOVATION FUNNEL



★ FOCUS ON EXECUTION



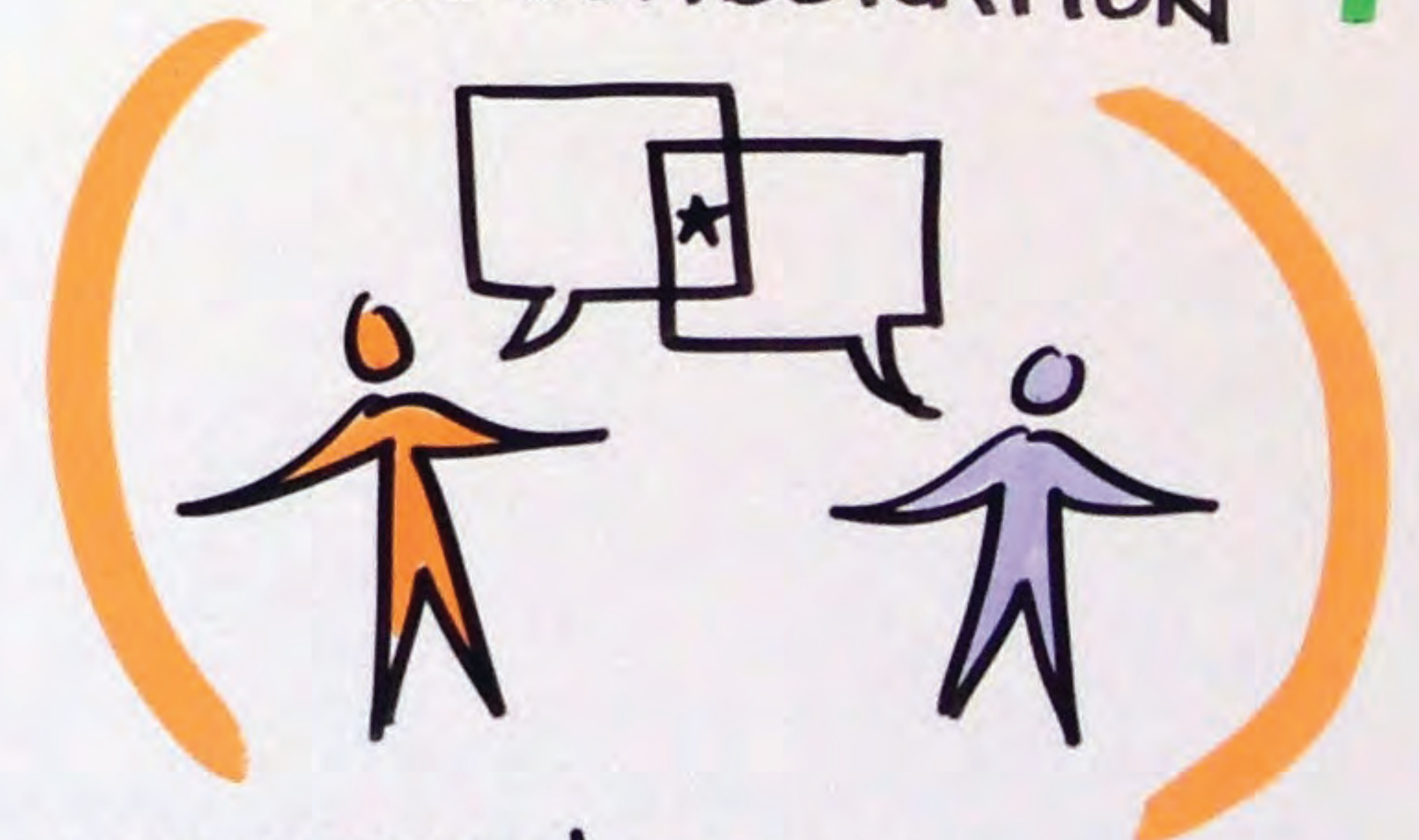
★ TRANSPARENCY BUILDS TRUST

★ WE WANT TO MAKE THINGS VISIBLE 

★ ENGAGING STUDENTS in Design Process



★ CREATING PHYSICAL SPACES THAT FOSTER COLLABORATION



★ IF YOU HAVE OWNERSHIP YOU DON'T WALK AWAY

★ CROWD SOURCING

seeyourwords.com

DRAWN LIVE by Jo

TEMPLE UNIVERSITY

★ REDEFINE PREPAREDNESS

★ ACCESS

★ LISTENING & LEARNING

PRICELESS

★ CROSS CAMPUS COLLABORATION



★ SUPPORTS NEED TO BE

PROACTIVE & DATA DRIVEN

★ GET IT DONE

WE'LL TWEAK AS WE GO

★ RISK-NEEDS RESPONSIVITY

★ H.S. PROGRAM

30,000 APPLICANTS

24% TEST OPTIONAL

50% ADM

4800 INCOMING

→
~ 900
TEST
OPTIONAL

★ EARLY ALERT SYSTEMS





THE UNIVERSITY OF ILLINOIS AT CHICAGO

★ CAMPUS WIDE AWARENESS of **STUDENT SUCCESS**

DEPARTMENT LEADERSHIP



★ **BULLETINS**

NO ONE IS LEFT IN THE DARK



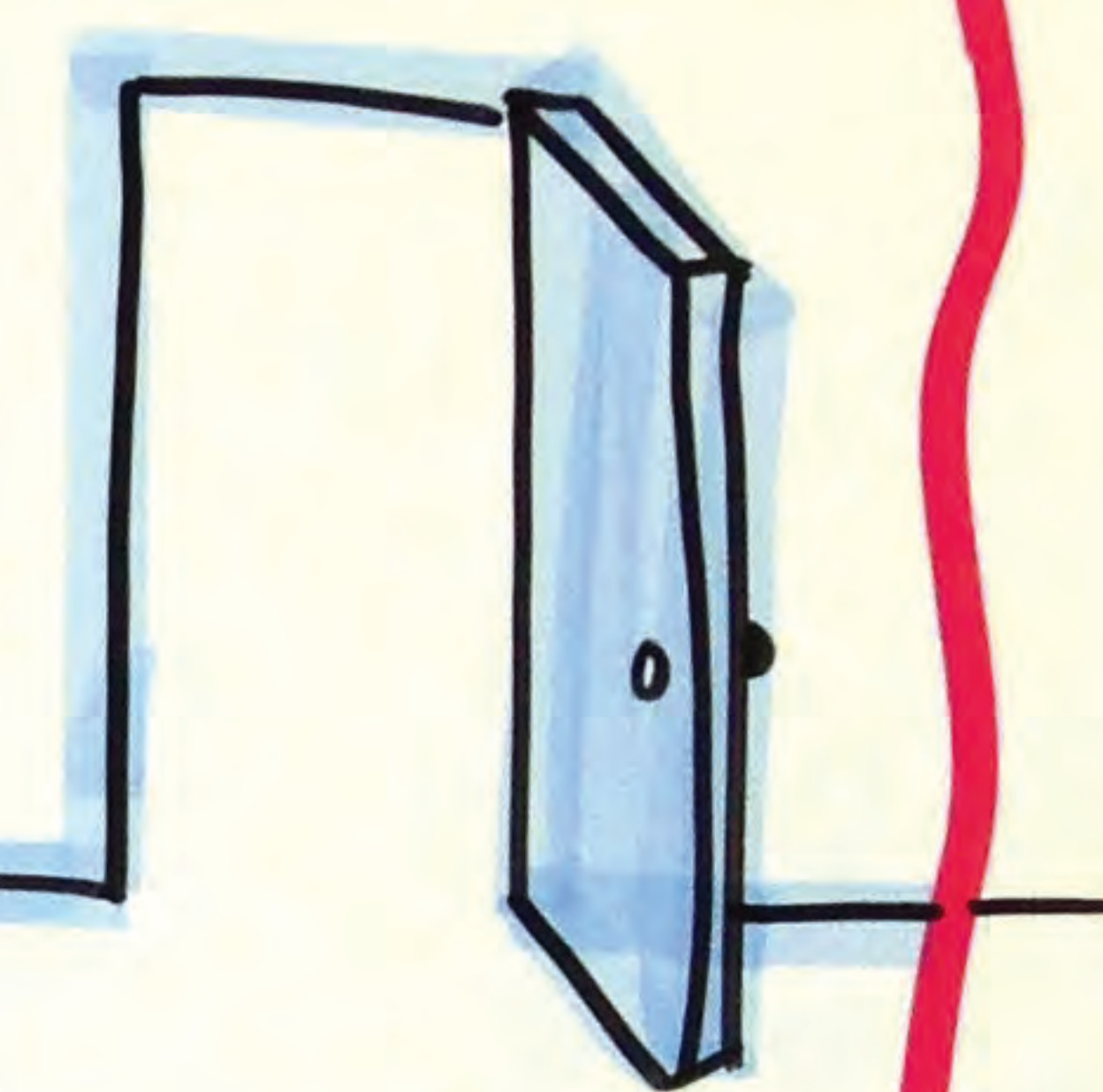
★ EXPOSED PROCESS that CONTINUES TO EVOLVE

★ FACULTY INCORPORATE STUDENTS INTO SCHOLARLY ACTIVITY

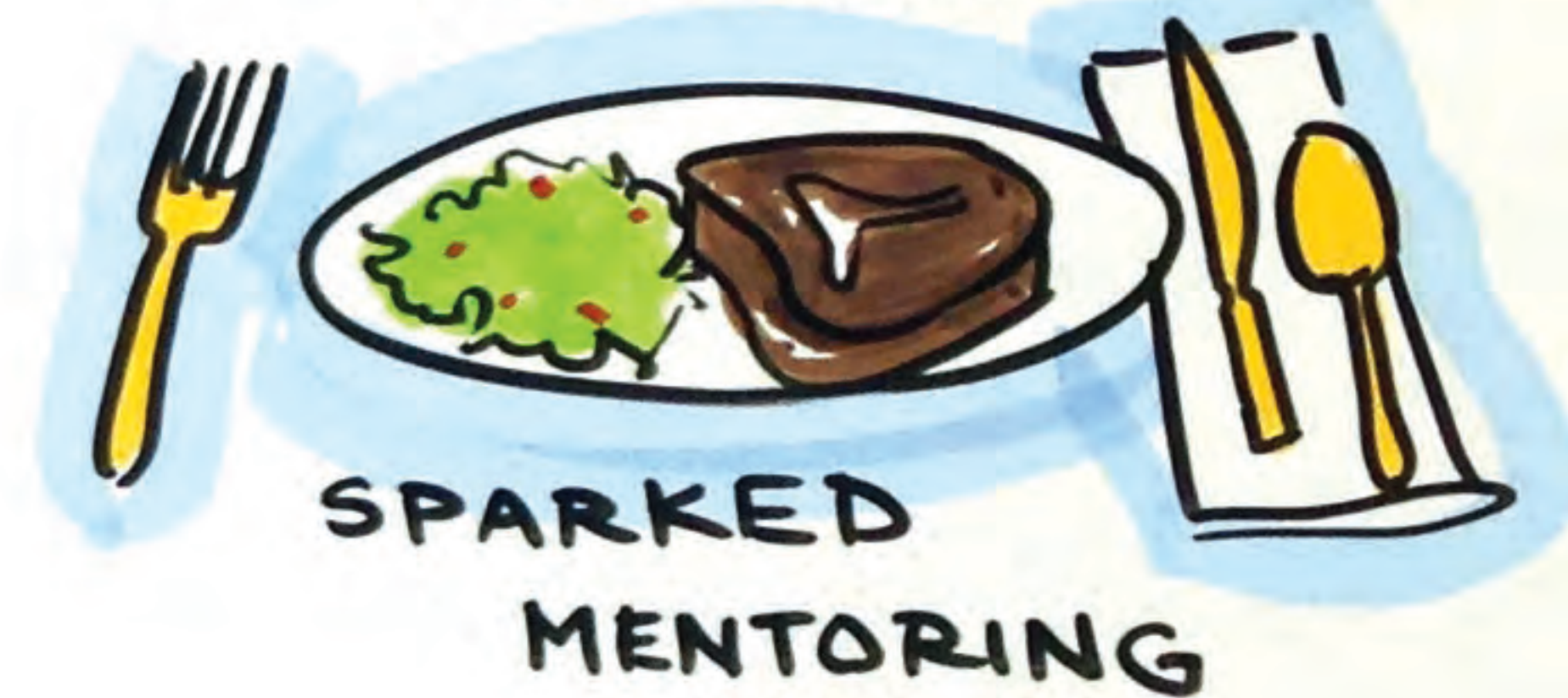
★ SUSTAINABILITY

→ A PART OF EACH OF OUR PROJECTS

★ WE BELIEVE in **ACCESS**



★ informal opportunities **CONVERSATION** OVER DINNER



SPARKED MENTORING

★ IT'S USEFUL to IDENTIFY **FLØWS**
A

★ FEELING STABLE & SURE FOOTED