

UNITING SILOS

*Development of a Comprehensive  
College Recruitment Plan*

**Andrea Lutz**

*Assistant Director  
Undergraduate Recruitment*

**Zac Brown**

*Assistant Director  
Student Recruitment & Retention*

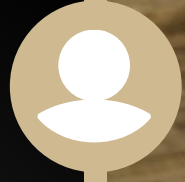
**2,823**

Undergraduates



**10%**

Underrepresented Minority  
Undergraduate Students



**62%**

Female Students



**75%**

Indiana Residents



**21%**

Out of State



**4%**

International



**COLLEGE OF AGRICULTURE**

**BY THE**

**NUMBERS**



# ACADEMIC

# DEPARTMENTS

Food Science

Agricultural  
Economics

Agricultural Sciences  
Education &  
Communication

Agricultural &  
Biological Engineering

Animal Sciences

Forestry & Natural  
Resources

Entomology

Botany & Plant  
Pathology

Biochemistry

Horticulture  
& Landscape  
Architecture

Agronomy

Natural Resources  
and Environmental  
Science



## *Undergraduate Recruitment Planning Initiative*

- *Office of Academic Programs (OAP)*
- *Office of Multicultural Programs (OMP)*
- *Agricultural Communications*

## *Core Recruitment Team*

- **Maureen Manier - *Department Head, Agricultural Communications***
- **Zac Brown - *Assistant Director for Student Recruitment and Retention, OMP***
- **Rusty Nelson - *Assistant Director of Pathway to Purdue Ag & Transfer Programs, OAP***
- **Anna Williams - *Early Outreach Initiatives Coordinator, OAP***
- **Crenel Francis - *Summer Programs & Outreach Coordinator, OMP***
- **Scott Haan - *Senior Administrative Assistant for Recruitment & Outreach, OAP***
- **Andrea Lutz - *Assistant Director for Undergraduate Recruitment, OAP***

## *Temporary Collegewide Subcommittees*

- ***Recruitment Committee***
- ***Student Recruitment Culture Committee***
- ***Marketing Communications Committee***

## *What did leadership want to accomplish?*

- *Holistic effort for Purdue Agriculture undergraduate academic programs*
- *Involve and support academic departments*
- *Identify key audiences*
- *Plan and implement intentional recruitment strategies*
- *Clear and consistent messaging and look for Purdue Agriculture academic programs*
- *Increase yield*

## *Temporary Collegewide Subcommittees*

- *Provided findings and suggestions*
- *Many ?s remained - Core Recruitment Team dove in!*



## *Development of Comprehensive College Recruitment Plan*

- *Identified recruitment goals and primary, secondary & digital audiences*
- *Established main messages*
- *Identified recruitment priorities and strategies - collaboration, communication, events, programs, partnerships*

## *Examples of Key Audience Considerations*

- *CoA undergraduate enrollment*
- *CoA applications, admits, matriculation*
- *County demographics*
- *Number of public high school graduates by county*
- *School enrollment by ethnicity*
- *% of students enrolling in college by county*
- *% of students meeting early college success criteria by county*

## *Initial Focuses & Steps*

- *Strengthening collaboration and communication with college and university partners*
- *Started monthly all CoA Recruitment meetings*
- *Created CoA Recruitment Resources OneDrive*
- *University-branded, college-distinctive look for CoA recruitment communications*
- *Identified and began to engage with optimal external partner relationships & events*
- *Developed & implemented cohesive yield communications plan*

# CoA Majors Brochure

**PURDUE AGRICULTURE**



Majors — the most majors in the United States.

Equip you with the skills, network and resources you need to succeed. [purdue.edu/majors/agriculture](http://purdue.edu/majors/agriculture)

**Business**  
Apply business principles in finance, human resources, marketing, sales, strategy and supply chain to the demands of the food and agricultural industries. Concentrations include Agribusiness Management, Agricultural Marketing, Commodity Marketing, and Food Marketing. [purdue.edu/agcom](http://purdue.edu/agcom)

**Communication**  
Use communication strategies to improve the world's awareness of agriculture, food and science issues. Build relationships in public relations, journalism, marketing and new media careers in marketing, media, video production and more. [purdue.edu/asec](http://purdue.edu/asec)

**Economics**  
Use data to analyze information and help decision-makers shape the global agricultural market. Concentrations in Applied Agricultural Economics, Agricultural Economics and Policy & Pre-Law. [purdue.edu/agcom](http://purdue.edu/agcom)

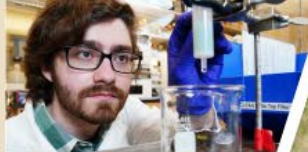
**Education**  
Prepare to lead in law, policy, government, consulting, and research. [purdue.edu/agcom](http://purdue.edu/agcom)

**Agricultural Education**  
Learn best methods to teach at the front of high school classrooms, in training efforts for major companies or in informal youth/adult settings (including extension education). You'll qualify for an Indiana Educator License (which is recognized in 40+ states) and gain essential leadership development skills. [purdue.edu/asec](http://purdue.edu/asec)

**Agricultural Engineering (Machine Systems Engineering)**  
Improve and refine technologies for the future of energy, food and water in a program with deep ties to the College of Agriculture and College of Engineering. You'll be ready for careers in agriculture machinery, construction, forestry, hydraulics, precision or digital ag and more. [purdue.edu/aire](http://purdue.edu/aire)



## EXPLORE THE POSSIBILITIES



**Agricultural Systems Management**  
Develop environmentally sound, technology-driven systems for grain, machine, and precision or digital agriculture industries. You'll understand connections between infrastructure and agriculture products, and choose from concentrations in Agroecology, Data & Information Systems, and Leadership & Management. [purdue.edu/aire](http://purdue.edu/aire)

**Agromony**  
Optimize agricultural practices in ways that help producers protect and manage their crops. Concentrations include Agronomic Business & Marketing, Crop & Soil Management, and International Agromony. You can enjoy careers in field production management, land-use management, seed & chemical sales, extension programming or other technical areas. [purdue.edu/agry](http://purdue.edu/agry)

**Animal Sciences**  
Explore genetics, nutrition, physiology, behavior and more in a hands-on program that can lead to graduate or professional school and careers in production, sales or research. Act on your inspiration to work with animals in the following concentrations: Animal Agribusiness, Animal Production & Industry, Behavior/Well-Being, Bioscience, and Pre-Veterinary Medicine. [purdue.edu/asec](http://purdue.edu/asec)

**Applied Meteorology & Climatology**  
Forecast weather patterns, predict extreme weather events, and offer input to help mitigate climate change threats to the environment. You can develop careers with government agencies, such as the National Weather Service or Department of Defense, environmental consulting firms or insurance/grain trading companies. [purdue.edu/agry](http://purdue.edu/agry)

**Aquatic Sciences (Machine Systems Engineering)**  
Understand the function of aquatic ecosystems — in concentrations of Fisheries or Marine & Freshwater Biology — by getting outdoors and finding leading edge ways to preserve them. You can pursue research/management of fisheries, lakes and streams, aquaculture and more. [purdue.edu/tr](http://purdue.edu/tr)

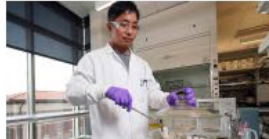


**Biochemistry**  
Explore life's molecular foundations, build your passion for research and prepare for a variety of careers in biotechnology or life sciences. The program also provides a strong foundation for graduate, medical, dental or veterinary school, and has both Pre-Medicine and Pre-Veterinary Medicine concentrations. [purdue.edu/biochem](http://purdue.edu/biochem)

**Biological Engineering**  
Solve challenges for pharmaceuticals, food production or biotechnology in a program where you'll experience deep ties to the College of Agriculture and College of Engineering. Concentrations include Bioenvironmental Engineering, Cellular & Biomolecular Engineering, Food & Biological Process Engineering, and Pharmaceutical Process Engineering. [purdue.edu/aire](http://purdue.edu/aire)

**Crop Science**  
Learn how to modulate plant behavior in ways that maintain and improve their quality, such as better transport of nutrients and stronger response to water stress. The broad curriculum offers you diverse career options, including field agronomy, research support, sales and more. [purdue.edu/agry](http://purdue.edu/agry)

**Environmental & Natural Resources Engineering**  
Develop long-term strategies to reduce ecosystem pollution and consider careers in government agencies, consulting or agriculture. You can address environmental, energy, food and water challenges in a program with deep ties to the College of Agriculture and College of Engineering. [purdue.edu/aire](http://purdue.edu/aire)



**Farm Management**  
Build your expertise in proactively managing family or professional farms. You'll learn how to address existing challenges in today's farm economy by developing advanced knowledge of grain or livestock production, finance, marketing and management strategies. [purdue.edu/agcom](http://purdue.edu/agcom)

**Fermentation Science**  
Discover ways to use microbes as biotechnological factories to produce goods of societal value, from foods to textiles to pharmaceuticals. You'll be prepared to apply scientific knowledge and economic principles to biotechnology and fermentation operation, research, development and marketing, or pursue graduate studies in biotechnology, applied microbiology or biological engineering. [purdue.edu/foodsci](http://purdue.edu/foodsci)

**Food Science**  
Create a world in which foods and beverages are more accessible, safe, nourishing and great-tasting. Chemistry, biology, calculus and physics courses lay your foundation for advanced curricula and potential careers in product development, ingredient functionality, food safety and more. [purdue.edu/foodsci](http://purdue.edu/foodsci)

**Forestry**  
Enhance your biological, ecological, economic and social knowledge to manage terrestrial ecosystems. Get outside for hands-on work and consider careers in government, municipalities, private industry or consulting. Concentrations include Forest Management, Forest Science, Sustainable Biomaterials, and Urban Forestry. [purdue.edu/tr](http://purdue.edu/tr)

**Horticulture**  
Help feed the world and improve quality of life through the science of growing and caring for plants. You can pursue commercial careers or those in research, management, design and policy. Concentrations include Horticultural Production & Marketing, Landscape Contracting & Management, Landscape Design, Landscape Enterprise Management, Plant Science, and Urban Horticulture. [purdue.edu/hla](http://purdue.edu/hla)

**Insect Biology**  
Build your knowledge of insects and biology to help solve challenges related to crop pests, diseases, endangered or invasive species, food security, education, medicine, genetics and criminal justice. Pursue careers in research, business, education, public health, law enforcement/government and more. Optional concentration of Forensic Entomology available. [purdue.edu/entm](http://purdue.edu/entm)



**Landscape Architecture**  
Combine your creativity with sustainable science, sociological savvy and cutting-edge technology to design parks, retail environments, corporate campuses or even new communities. A Pre-Landscape Architecture option is available for transition into the program. [purdue.edu/hla](http://purdue.edu/hla)

**Natural Resources & Environmental Science**  
Create positive change in environmental management, policy and science in an interdisciplinary program with a focus in both the physical and social sciences. Concentrations include Climate & Energy Solutions, Emerging Environmental Challenges, Environmental Policy & Analysis, Environmental Quality & Restoration, Sustainability Science, and Watershed Management. [purdue.edu/nres](http://purdue.edu/nres)

**Plant Genetics, Breeding, & Biotechnology**  
Build your knowledge of advanced genetic and breeding methods to optimize plant characteristics, including performance and yield. After graduation, you can perform research to enhance critical traits of plants or investigate technical careers in industry, government or academic environments. [purdue.edu/agry](http://purdue.edu/agry)

**Plant Science**  
Discover how to improve the use of plants in food, fiber and fuel technologies by examining their complex, highly interactive cells in our environment. The broad-based curriculum helps you pursue careers in plant pathology or ecology, biotechnology, conservation and more. [purdue.edu/plantsci](http://purdue.edu/plantsci)

**Pre-Plant Studies — Exploratory**  
Interested in plants but unsure which of our majors suits you? By starting here, you can take applicable courses, investigate options for plant-related majors in the College of Agriculture and explore career paths in research, design, landscape design, business, marketing and more. [purdue.edu/preplantstudies](http://purdue.edu/preplantstudies)

**Pre-Veterinary Medicine**  
Considering a career as a veterinarian but aren't sure which academic major is your best fit? Start in this non-degree program. You can explore options within the College of Agriculture while taking courses in biology, chemistry and related sciences to start your career path. [purdue.edu/prevetmed](http://purdue.edu/prevetmed)



**Sales & Marketing**  
Enhance your sales and marketing skills to develop long-term relationships with customers and help them meet business goals. You can pursue careers with farm input companies, food manufacturers, marketing organizations, logistics firms and more. [purdue.edu/agcom](http://purdue.edu/agcom)

**Soil & Water Sciences**  
Preserve the quality, safety and availability of these indispensable natural resources. A strong scientific curriculum emphasizes research in soil conservation, water systems management, environmental management and more. [purdue.edu/agry](http://purdue.edu/agry)

**Sustainable Food & Farming Systems**  
Discover the future of evolving smaller-scale American agriculture, including organic and urban agriculture systems. This comprehensive program prepares you to manage low-input farming enterprises or to enter a wide variety of professional agricultural or environmental careers. [purdue.edu/hla](http://purdue.edu/hla)

**Turf Management & Science**  
Learn the science and cultural management behind producing professional-level turf conditions on stadium athletic fields and golf courses. Business aspects let you pursue lawn landscape management or turf industry sales while science components can prepare you for graduate school. [purdue.edu/hla](http://purdue.edu/hla)

**Wildlife**  
Protect animal populations — from forests and fields to urban areas — by developing and implementing plans to help them thrive. Apply your knowledge to careers with government agencies, nonprofit organizations, consulting firms and more. [purdue.edu/tr](http://purdue.edu/tr)

**COMPLEMENT YOUR DEGREE WITH A MINOR!**

- Agricultural Systems Management
- Animal Sciences
- Aquatic Sciences
- Biochemistry
- Bioinformatics
- Biotechnology
- Crop Science
- Data-Driven Agriculture
- Farm Management
- Fermentation Science
- Food and Agribusiness Management
- Food Science
- Forensic Sciences
- Forest Ecology
- Furniture Design
- Global Food and Agricultural Systems
- Horticulture
- Insect Biology
- International Studies in Agriculture
- Landscape Management
- Landscape and Turf Management
- Natural Resources and Environmental Science
- Pre-Food Processing
- Plant Biology
- Plant Pathology
- Soil Science
- Sustainable Food and Farming Systems
- Turf Management
- Urban Forestry
- Wood Science
- Wildlife Science
- Wood Products Manufacturing Technology

**Interested in transferring to Purdue Agriculture?**  
Nearly 15% of our undergraduates transfer from other colleges and universities. To learn more about your path to Purdue Agriculture, please visit [purdue.edu/transfers](http://purdue.edu/transfers).



# Cultural, Diversity, & Student Resources Brochure

## CULTURAL, DIVERSITY AND STUDENT RESOURCES

AT PURDUE UNIVERSITY

A Place to be Supported.  
A Place with People Who Accept You.  
A Place Where You Belong.



College of Agriculture



## STUDENT RESOURCES

### ACE FOOD PANTRY

The ACE Food Pantry makes food more readily available to those experiencing food insecurity on a consistent or inconsistent basis. All you need is your Purdue ID. The pantry also focuses on eradicating root causes of hunger, including culturally appropriate food access, food use and food availability.

Baptist Student Foundation (Bottom Floor)  
200 N. Russell St., W. Lafayette, IN 47906  
#acefoodpantry@gmail.com  
#ACECampusFoodPantry @acefoodpantry

### ACADEMIC SUCCESS CENTER

At the Academic Success Center, our goal is to help you achieve yours. With services such as Supplemental Instruction, Peer Success Coaching, and more, we are always working to help you be successful at Purdue.

Academic Success Center  
Wiley Hall, Room C25  
500 N. Martin Isakhe Dr., W. Lafayette, IN 47906  
#academicssuccess@purdue.edu  
@purdue.edu/asc 765-494-4700

### COUNSELING & PSYCHOLOGICAL SERVICES (CAPS)

Counseling and Psychological Services is a team of multiculturally sensitive professionals delivering comprehensive psychological services to the students of Purdue University. CAPS has a strong commitment to meet the needs of diverse people. In all the service areas provided by CAPS, our staff strives to create an environment where all people feel welcome.

Purdue University Counseling and Psychological Services  
601 Stadium Mall Drive, Room 224  
W. Lafayette, IN 47907  
@purdue.edu/caps 765-494-6995

### DISABILITY RESOURCE CENTER

Purdue University is committed to an inclusive and welcoming experience for all students. The Disability Resource Center (DRC) is the office designated by Purdue to provide services, resources, and programs to facilitate equal access for disabled students, resulting in their full participation in curricular and co-curricular offerings.

Young Hall, Room 830  
155 S. Grant St., W. Lafayette, IN 47907  
#drc@purdue.edu 765-494-1247  
@purdue.edu/drc



College of Agriculture

An Equal Access/Equal Opportunity University

## CULTURAL AND DIVERSITY RESOURCES

A diverse and inclusive community is an integral part of your experience in the College of Agriculture and at Purdue University. Here is information about resources related to culture, diversity, inclusivity and social services available to you as a Boilermaker.

### PURDUE AGRICULTURE OFFICE OF MULTICULTURAL PROGRAMS

Purdue Agriculture's Office of Multicultural Programs (OMP) serves as a resource to the college, sponsoring educational and outreach initiatives and community building efforts and providing assistance to students, faculty and staff.

Agricultural Administration Building, Rm. 106  
815 W. State St., W. Lafayette, IN 47907  
#omp@purdue.edu 765-494-9586  
@ag.purdue.edu/omp

### DIVERSITY RESOURCE OFFICE (DRO)

Encouraging, developing, administering, and assessing programs and activities that foster a climate within Purdue which celebrates the diversity of all members of our university community. We invite you to explore our initiatives, learn about upcoming events, and discover the many diversity programs available on Purdue's campus. Please join us in honoring diversity.

Material Sciences & Electrical Engineering Building  
501 Northwestern Ave., Suite 386  
W. Lafayette, IN 47907  
#dro@purdue.edu 765-494-7307  
@purdue.edu/dro

### ASIAN AMERICAN AND ASIAN RESOURCE AND CULTURAL CENTER (AAARCC)

The AAARCC was founded in 2015. As a unit under the Division of Diversity and Inclusion, the AAARCC's mission is to weave diverse Asian and Asian American experiences into the fabric of campus life. The AAARCC is open for everyone and there are multiple ways to get involved – with initiatives and programming in the intersections of pedagogy (teaching and learning opportunities), cultural arts and performances, as well as advocacy work.

915 5<sup>th</sup> St., W. Lafayette, IN 47906  
#aaarcc@purdue.edu 765-496-0488  
@purdue.edu/aaarcc f PurdueAAARCC  
@PurdueAAARCC @purdueaaarcc

### BLACK CULTURAL CENTER (BCC)

Founded in 1993, the BCC has grown into a vibrant force for collective cultural enrichment and intellectual growth. Through programming and services concerning art, history, and cultural understanding, the BCC brings together the wonderful diversity of the Purdue community while nurturing and presenting the rich heritage of the Black and African American experience.

1100 3<sup>rd</sup> St., W. Lafayette, IN 47907  
#bcc@purdue.edu 765-494-3052  
@purdue.edu/bcc f PurdueBCC1969  
@purdue\_bcc @purdue\_bcc

### LATINO CULTURAL CENTER (LCC)

¡Todos son bienvenidos! (All are welcome!) is the guiding philosophy of the Latino Cultural Center (LCC). The LCC was established in 2003 as a place to gather, learn, share and support Latino cultures. The LCC seeks to enhance diversity through education and programming as it also acts as a home away from home among Latinos at Purdue. The center sponsors educational, social, professional and cultural events throughout the year.

426 Waidron St., W. Lafayette, IN 47906  
#latinoccc@purdue.edu 765-494-2530  
@purdue.edu/lcc f LCCPURDUE  
@LCCPurdue @lccpurdue



### LESBIAN, GAY, BISEXUAL, TRANSGENDER, AND QUEER (LGBTQ) CENTER

The LGBTQ Center engages the Purdue community on LGBTQ issues through such exciting events as the distinguished lecture series, advocacy for equitable access and a discrimination-free environment, as well as numerous training opportunities. The center is also a dedicated Safe Zone – a welcoming and affirming campus location for all regardless of sexual orientation, gender identity or gender expression.

Schuman Hall of Student Services, Rm 230  
475 Stadium Mall Dr., W. Lafayette, IN 47907  
#lgbtq@purdue.edu 765-496-6231  
@purdue.edu/lgbtq  
f Purdue University LGBTQ Center  
#PurdueLGBTQ @PurdueLGBTQ

### NATIVE AMERICAN EDUCATIONAL AND CULTURAL CENTER (NAECC)

Representing over 65 Indigenous nations at Purdue, the NAECC provides a home away from home for Native American, Alaska Native and Native Hawaiian students, faculty and staff. Its mission is to develop new generations of educated students who will make positive contributions to their tribal communities and educate non-Native audiences about Indigenous cultures, histories and traditions.

903 9<sup>th</sup> St., W. Lafayette, IN 47906  
#naecc@purdue.edu 765-494-4540  
@purdue.edu/naecc  
f Purdue-University-Native-American-Educational-and-Cultural-Center  
#PurdueNAECC @Purdue\_naecc





# CoA Department Projects

**P PURDUE UNIVERSITY** College of Agriculture



## AGRICULTURAL ECONOMICS

**AWARD WINNING ADVISORS**

**99% JOB PLACEMENT**


**GLOBAL AGRIBUSINESS LEADERS**

**EXPLORE THE POSSIBILITIES**

 [PurdueAgEcon](#)  
 [PurdueAgEcon](#)  
 [purdue\\_agecon](#)  
 [PurdueAgriculture](#)

Purdue University is an Equal Opportunity/Affirmative Action Institution.

**P PURDUE UNIVERSITY** College of Agriculture



## EXPLORE THE POSSIBILITIES

### AGRONOMY

**EXPLORE AGRONOMY**

Find your fit among some of the professional roles our graduates accept:

- Agricultural Research Scientist
- Agronomist (Sales/Product Manager)
- Natural Resource Project Manager/Conservation Specialist (503K)
- Certified Crop Advisor
- Farm Management
- Extension Educator
- Soil Scientist
- Plant Scientist/Breeder/Geneticist
- Seed Production Specialist
- Digital Agriculture

**CAREER CHOICES**

**STUDENT PROFILE**

**CLAIRE KING**  
Major: Plant Breeding Genetics & Biotechnology  
Minor: Bioinformatics & Biological Sciences

*"I chose Purdue University to help me accomplish my goals because the faculty truly care about your growth and development. The abundance of undergraduate research has opened many doors to different opportunities."*

*"I chose to study PRGE due to its potential to help make a difference in the food production system. She is passionate about restructuring that system to be more sustainable for farmers and the Earth itself. She strives to obtain the ability to help create high-yielding and strong lines of different crops, which may allow farmers to stay away from monoculture and push toward more sustainable, diversified production."*

**BY THE NUMBERS**

- 99% OF GRADUATES STARTED THEIR CAREER OR CONTINUED THEIR EDUCATION WITHIN A YEAR
- 1,600 ACRE FARM WITH 100+ RESEARCH PROJECTS CONDUCTED ANNUALLY
- \$48,000 BEGINNING AVERAGE SALARY FOR PURDUE AGRONOMY GRADUATES
- STUDENT TO 4:1 FACULTY RATIO
- 45% OF UNDERGRADUATE STUDENTS INVOLVED IN RESEARCH
- \$80,000 SECURED FUNDING FOR AGRONOMY STUDENT SCHOLARSHIPS

**MAJORS**  
 • Agronomy  
 • Applied Meteorology and Climatology  
 • Crop Science  
 • Plant Genetics, Breeding and Biotechnology  
 • Soil and Water Sciences

**RESEARCH OPPORTUNITIES**  
 Purdue's Agronomy faculty are known throughout the country and world for their research accomplishments.

**INTERNSHIPS**  
 Agronomy partners with numerous and diverse organizations and corporations to provide students the opportunity to complete internships and gain practical experience in fields of their interest as well as to explore other possibilities.

Agronomy is the core of all agricultural sciences. The management of soil and water with a view to achieving production of high-yielding varieties, is exclusively an agronomic domain. Among all the sciences in agriculture, agronomy occupies a pivotal position: an integrated and applied aspect of different disciplines of pure sciences.

Farming has forever and will always require efficiency and vigilance. Producers look for ways to keep one eye on their fields at all times, a need that led to the implementation of technology such as UAVs and soil sensors and testing.

Agronomy at Purdue University provides global leadership in the plant genetics, plant physiology, meteorology, soil and water sciences to enhance the quality of life through agronomic education that results from discovery, education and engagement.

Students are actively encouraged to join these research endeavors which place our department at the forefront of adapting crops to the ever-changing environment. We are also focused on developing cropping systems technology to help feed India, America and the world on lower acres of agricultural land. Our goal is to educate and train future scientists, agronomists, practitioners and thinkers.

**P PURDUE UNIVERSITY** College of Agriculture



## EXPLORE AGRONOMY

Join a community focused on making a difference, finding solutions and envisioning and realizing what can be achieved individually and together.

Learn more about Purdue Agronomy by visiting:  
[ag.purdue.edu/AGRY](http://ag.purdue.edu/AGRY)

For questions or more information  
Email: [agronomy@purdue.edu](mailto:agronomy@purdue.edu)  
Call: (765) 434-4773

 Purdue Agronomy
  @PurdueAgronomy
  @PurdueAgronomy
  Purdue Agronomy

In equal opportunity institution.

**P PURDUE UNIVERSITY** Animal Sciences: Explore the Possibilities in Purdue Agriculture



# Animal Sciences

at Purdue University

Watch on  YouTube

Watch later Share

**P PURDUE UNIVERSITY** College of Agriculture

## GET TO KNOW FOOD SCIENCE

**P PURDUE UNIVERSITY** College of Agriculture



NAME: **Kaiden Lorey**  
MAJOR: **Pre-Veterinary Medicine**  
CLASS YEAR: **2024**



# Questions?

**Andrea Lutz**

*rademach@purdue.edu*

**Zac Brown**

*brow1688@purdue.edu*